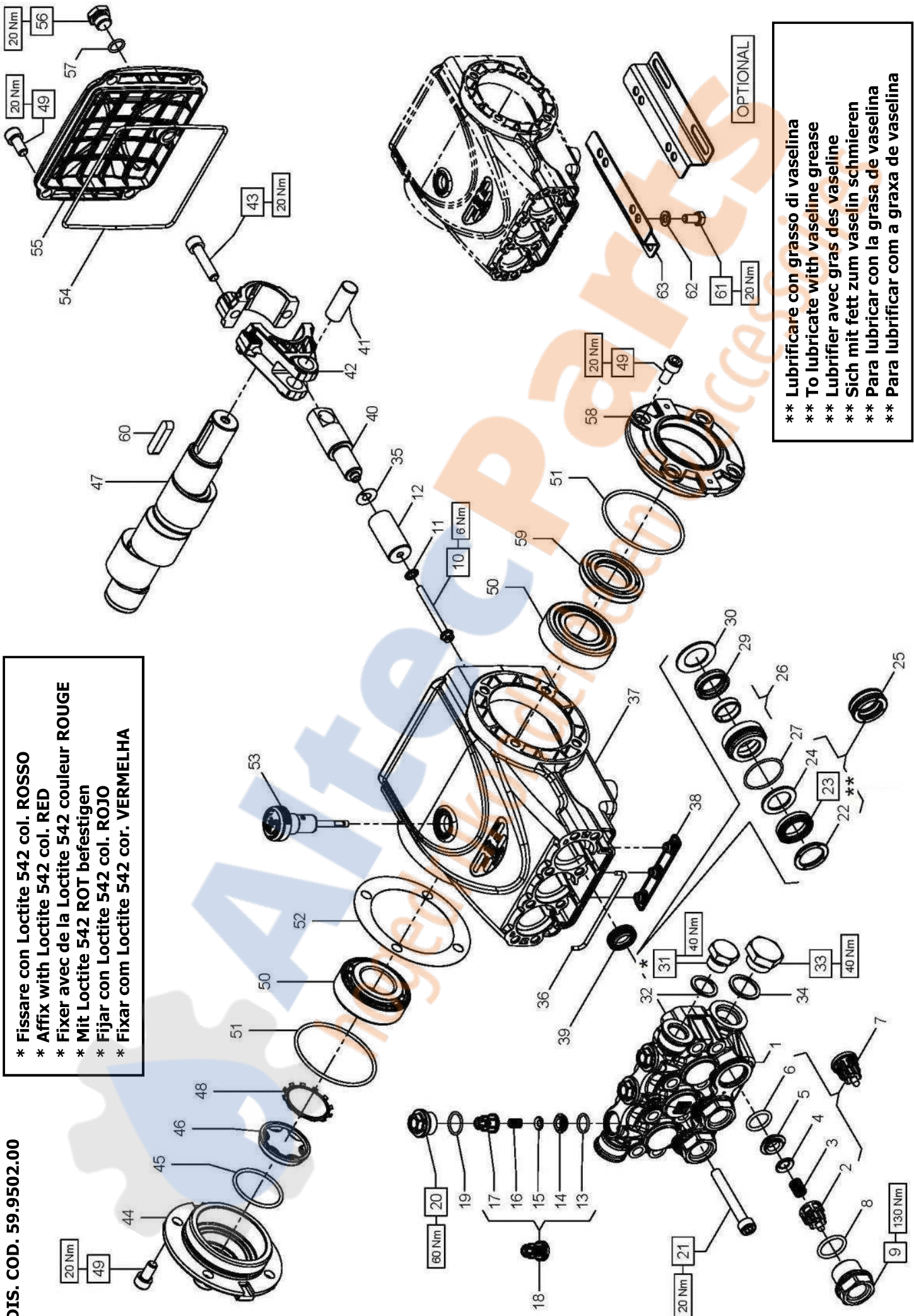


DIS. COD. 59.9502.00

- * Fissare con Loctite 542 col. ROSSO
- * Affix with Loctite 542 col. RED
- * Fixer avec de la Loctite 542 couleur ROUGE
- * Mit Loctite 542 ROT befestigen
- * Fijar con Loctite 542 col. ROJO
- * Fixar com Loctite 542 cor. VERMELHA



- ** Lubrificare con grasso di vaselina
- ** To lubricate with vaseline grease
- ** Lubrifier avec gras des vaseline
- ** Sich mit fett zum vaselin schmieren
- ** Para lubricar con la grasa de vaselina
- ** Para lubrificar com a graxa de vaselina

C3W2013 - C3W2015 - C3W2021

PISTONE - PISTON D. 20 **PISTONE - PISTON D. 22**

C3W2013 - C3W2015

C3W2021

| POS | COD. | DESCRIZIONE - DESCRIPTION - KIT | NR |
|-----|--------------------------|--|--------------------|
| 1 | 59.1220.36 59.1221.36 | Testata pompa D. 20 Testata pompa D. 22 | 1 |
| 2 | 36.2025.51 | Guida valvola d'aspirazione | 269 |
| 3 | 94.7376.00 | Molla Dm. 9.4x14.8 | 269 |
| 4 | 36.2001.76 | Valvola sferica | 269 |
| 5 | 36.2003.66 | Sede valvola d'aspirazione | 269 |
| 6 | 90.3841.00 | OR D. 17.13x2.62 NBR 70SH 3068 | 269 |
| 7 | 36.7115.01 | Gr. valvola d'aspirazione | 269 |
| 8 | 90.3847.00 | OR D. 20.29x2.62 NBR 90SH 3081 | 292 |
| 9 | 98.2225.00 | Tappo M 24x1.5x16.7 | 292 |
| 10 | 99.1690.00 | Vite M 5x55 | 3 |
| 11 | 96.6905.00 | Rosetta D. 5.0x11.5x0.4 | 3 |
| 12 | 59.0400.09 59.0401.09 | Pistone D. 20x42 Pistone D. 22x42 | 3 |
| 13 | 90.3674.00 | OR D. 12.00x2.00 NBR 70SH | 269 |
| 14 | 36.2113.66 | Sede valvola di mandata | 269 |
| 15 | 36.2112.76 | Valvola sferica | 269 |
| 16 | 94.7333.00 | Molla Dm. 6.2x10.4 | 269 |
| 17 | 36.2111.51 | Guida valvola di mandata | 269 |
| 18 | 36.7193.01 | Gr. valvola di mandata | 269 |
| 19 | 90.3593.00 | OR D. 15.60x1.78 NBR 70SH 2062 | 292 |
| 20 | 98.2137.50 | Tappo M18x1.5x10 | 292 |
| 21 | 99.3175.00 | Vite M 8x60 UNI 5931 | 8 |
| 22 | 59.1000.51 59.1001.51 | Anello di testa D. 20 HP CW Anello di testa D. 22 HP CW | 344 345 346 347 |

KIT RICAMBI - SPARE KITS

| KIT Nr. | KIT 269 | KIT 292 | KIT 271 |
|---|--|------------------|---------|
| Posizioni incluse Positions included | 2 - 3 - 4 5 - 6 - 13 14 - 15 - 16 17 - (7) - (18) | 8 - 9 19 - 20 | 39 |
| Nr. Pcs. | 3 + 3 | 3 + 3 | 3 |

| POS | COD. | DESCRIZIONE - DESCRIPTION - KIT | NR |
|-----|--------------------------|--|--------------------|
| 23 | 90.2691.30 90.2716.30 | An. ten. alt. D.20x30x6/3.7 HP CW An. ten. alt. D.22x32x6/3.7 HP CW | 344 345 346 347 |
| 24 | 90.5133.00 90.5148.00 | Anello antiest. D. 20x30x2,0 Anello antiest. D. 22x32x2,0 | 344 345 346 347 |
| 25 | 90.2692.30 90.2717.30 | An. ten. alt. D.20.0x30.0x10.0 HP CW An. ten. alt. D.22.0x32.0x10.0 HP CW | 3 |
| 26 | 59.6061.01 59.6062.01 | Gr. supp. guarn./boccola D. 20 Gr. supp. guarn./boccola D. 22 | 345 347 |
| 27 | 90.3612.00 | OR D. 31.47x1.78 NBR 70SH 2125 | 344 345 346 347 |
| 29 | 90.2690.30 90.2715.30 | An. ten. alt. D.20.0x28.0x6.5 LP CW An. ten. alt. D.22.0x30.0x6.5 LP CW | 344 345 346 347 |
| 30 | 59.2108.70 59.2109.70 | Anello per tenuta D. 20 Anello per tenuta D. 22 | 345 347 |
| 31 | 98.2099.00 | Tappo G 3/8"x13 | 1 |
| 32 | 96.7380.00 | Rosetta D. 17.5x23.0x1.5 | 1 |
| 33 | 98.2179.00 | Tappo G 1/2"x10 | 1 |
| 34 | 96.7514.00 | Rosetta D. 21.5x27.0x1.5 | 1 |
| 35 | 96.6990.00 | Rosetta D. 7.5x23.0x0.5 | 3 |
| 36 | 59.2110.82 | Guarnizione spugna D. 3.0x103.0 | 1 |
| 37 | 59.0101.22 | Carter pompa | 1 |
| 38 | 58.2104.51 | Protezione | 1 |
| 39 | 90.1565.50 | Anello rad. D. 15.0x24.0x5.0/7.0 | 271 |
| 40 | 59.0500.66 | Guida pistone | 3 |
| 41 | 97.7399.00 | Spinotto D. 14x34 | 3 |

| PISTONE - PISTON D. 20 | | | | PISTONE - PISTON D. 22 | | | |
|------------------------|--|--|----|------------------------|--|--|----|
| POS | COD. | DESCRIZIONE - DESCRIPTION - KIT | NR | POS | COD. | DESCRIZIONE - DESCRIPTION - KIT | NR |
| 42 | 59.0300.01 | Biella | 3 | 42 | 59.0300.01 | Biella | 3 |
| 43 | 99.3099.00 | Vite serraggio biella M 8x35 | 6 | 43 | 99.3099.00 | Vite serraggio biella M 8x35 | 6 |
| 44 | 59.1502.22 | Coperchio laterale lato spia | 1 | 44 | 59.1502.22 | Coperchio laterale lato spia | 1 |
| 45 | 90.3877.00 | OR D. 39.34x2.62 NBR 70SH 3156 | 1 | 45 | 90.3877.00 | OR D. 39.34x2.62 NBR 70SH 3156 | 1 |
| 46 | 70.2118.01 | Spia livello olio | 1 | 46 | 70.2118.01 | Spia livello olio | 1 |
| 47 | 59.0201.35 59.0202.35 59.0203.35 | Albero ecc. C.13 - C3W2021 Albero ecc. C.12 - C3W2015 Albero ecc. C.10 - C3W2013 | 1 | 47 | 59.0201.35 59.0202.35 59.0203.35 | Albero ecc. C.13 - C3W2021 Albero ecc. C.12 - C3W2015 Albero ecc. C.10 - C3W2013 | 1 |
| 48 | 90.0756.00 | Anello d'arresto ZJ45 | 1 | 48 | 90.0756.00 | Anello d'arresto ZJ45 | 1 |
| 49 | 99.3039.00 | Vite M 8x16 UNI 5931 | 12 | 49 | 99.3039.00 | Vite M 8x16 UNI 5931 | 12 |
| 50 | 91.8375.00 | Cuscinetto a rulli | 2 | 50 | 91.8375.00 | Cuscinetto a rulli | 2 |
| 51 | 90.3913.00 | OR D. 67.95x2.62 NBR 70SH 3268 | 2 | 51 | 90.3913.00 | OR D. 67.95x2.62 NBR 70SH 3268 | 2 |
| 52 | 97.5680.00 97.5678.00 | Spessore D. 74.5x104x0.3 Spessore D. 74.5x104x0.1 | 1 | 52 | 97.5680.00 97.5678.00 | Spessore D. 74.5x104x0.3 Spessore D. 74.5x104x0.1 | 1 |
| 53 | 98.2105.00 | Asta livello olio G 3/8"x51 | 1 | 53 | 98.2105.00 | Asta livello olio G 3/8"x51 | 1 |
| 54 | 90.3922.00 | OR D.133.02x2.62 NBR 70SH 3525 | 1 | 54 | 90.3922.00 | OR D.133.02x2.62 NBR 70SH 3525 | 1 |
| 55 | 59.1601.22 | Coperchio posteriore | 1 | 55 | 59.1601.22 | Coperchio posteriore | 1 |
| 56 | 98.2042.50 | Tappo G 1/4"x9 TE17 - Zinc. | 1 | 56 | 98.2042.50 | Tappo G 1/4"x9 TE17 - Zinc. | 1 |
| 57 | 90.3585.00 | OR D. 10.82x1.78 NBR 70SH 2043 | 1 | 57 | 90.3585.00 | OR D. 10.82x1.78 NBR 70SH 2043 | 1 |
| 58 | 59.1501.22 | Coperchio laterale lato PTO | 1 | 58 | 59.1501.22 | Coperchio laterale lato PTO | 1 |
| 59 | 90.1648.00 | Anello rad. D. 30.0x55.0x7.0 | 1 | 59 | 90.1648.00 | Anello rad. D. 30.0x55.0x7.0 | 1 |
| 60 | 91.4892.00 | Linguetta 8.0x7.0x35.0 | 1 | 60 | 91.4892.00 | Linguetta 8.0x7.0x35.0 | 1 |
| 61 | 99.3037.00 | Vite M 8x16 UNI 5739 | 4 | 61 | 99.3037.00 | Vite M 8x16 UNI 5739 | 4 |
| 62 | 96.7016.00 | Rosetta D. 8.4 UNI 1751 | 4 | 62 | 96.7016.00 | Rosetta D. 8.4 UNI 1751 | 4 |
| 63 | 50.2000.74 | Piedino pompa | 2 | 63 | 50.2000.74 | Piedino pompa | 2 |