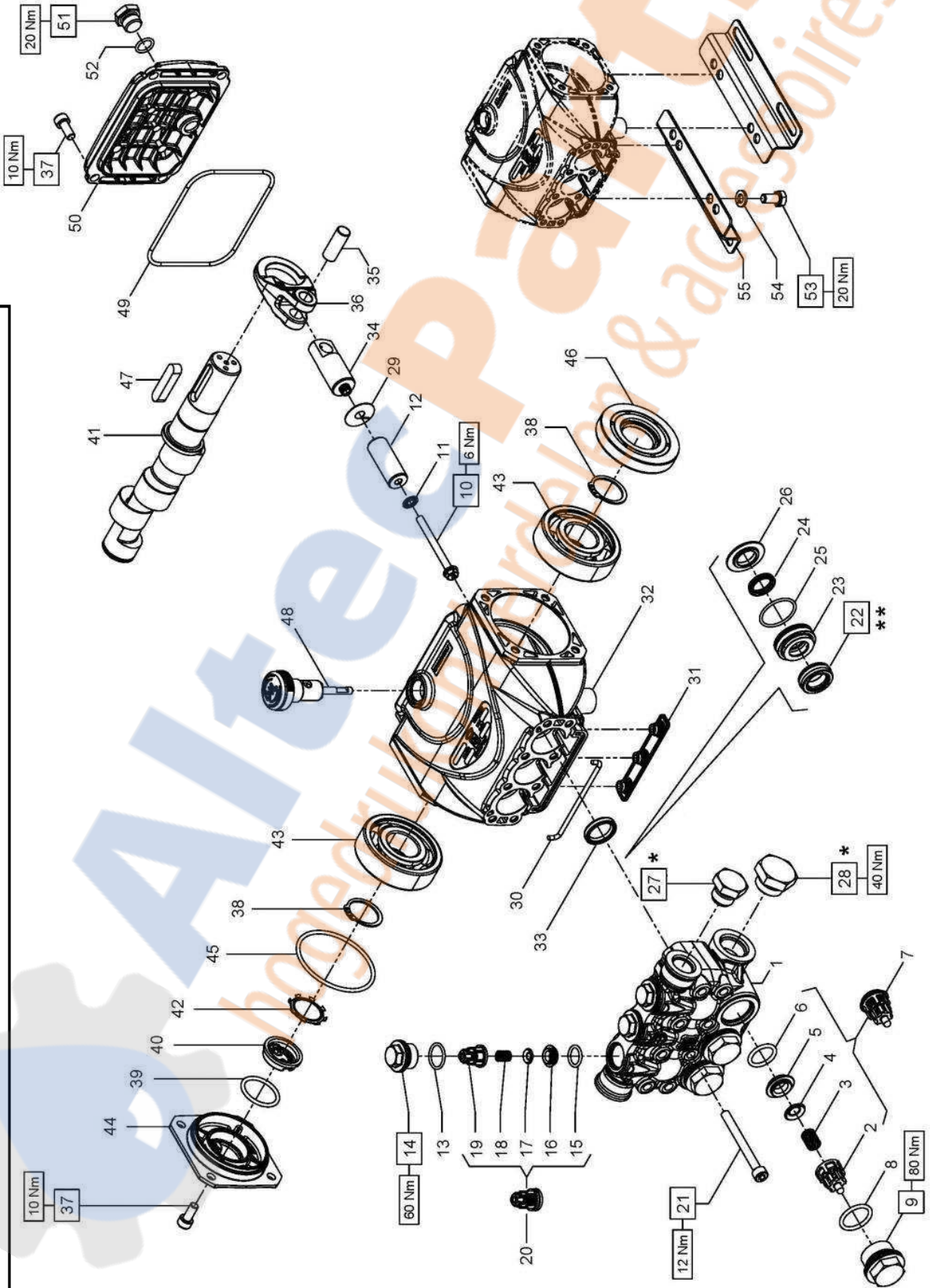


- * Fissare con Loctite 542 col. ROSSO
 - * Affix with Loctite 542 col. RED
 - * Fixer avec de la Loctite 542 couleur ROUGE
 - * Mit Loctite 542 ROT befestigen
 - * Fijar con Loctite 542 col. ROJO
 - * Fixar com Loctite 542 cor. VERMELHA
-
- ** Lubrificare con grasso al silicone OCILIS 250
 - ** To lubricate with silicon grease OCILIS 250
 - ** Lubrifier avec gras à la silicone OCILIS 250
 - ** Sich mit fett zum Silikon OCILIS 250 schmieren
 - ** Para lubricar con la grasa al silicón OCILIS 250
 - ** Para lubrificar com a graxa ao silicone OCILIS 250



**SS1B1505 - SS1B1507 - SS1B1509
SS1B1511 - SS1B1513 - SS1B1514
SS1C1509 - SS1C1511 - SS1C1513
SS1C1515**

PISTONE - PISTON D. 15

SS1B1505 - SS1B1507 - SS1B1509 SS1C1509 - SS1C1511	SS1B1511 - SS1B1513 - SS1B1514 SS1C1513 - SS1C1515
---	---

PISTONE - PISTON D. 18

SS1B1505 - SS1B1507 - SS1B1509 SS1C1509 - SS1C1511	SS1B1511 - SS1B1513 - SS1B1514 SS1C1513 - SS1C1515
---	---

POS	COD.	DESCRIZIONE - DESCRIPTION - KIT	NR
1	53.1215.36 53.1216.36	Testata pistone D. 18 Testata pistone D. 15	1
2	36.2025.51	Guida valvola	341
3	94.7373.00	Molla Dm. 9.4x14.8	341
4	36.2001.76	Valvola sferica	341
5	36.2036.66	Sede valvola	341
6	90.3841.00	OR D. 17.13x2.62 NBR 70SH 3068	341
7	36.7130.01	Gr. valvola d'aspirazione	341
8	90.3847.00	OR D. 20.29x2.62 NBR 90SH 3081	335
9	98.2214.20	Tappo M24x1.5x13.2	335
10	99.1690.00	Vite M5x55	3
11	96.6905.00	Rosetta D.5.0x11.5x0.4	3
12	63.0405.09 53.0400.09	Pistone D.18x38.5 Pistone D.15x38.5	3
13	90.3593.00	OR D. 15.60x1.78 NBR 70SH 2062	336
14	98.2137.20	Tappo M18x1.5x10 D.23 F12	336
15	90.3674.00	OR D. 12.00x2.00 NBR 70SH	334
16	53.2111.66	Sede valvola	334
17	36.2112.76	Valvola sferica	334
18	94.7333.00	Molla Dm. 6.7x10.8	334
19	36.2111.51	Guida valvola	334
20	36.7245.01	Gr. valvola di mandata	334
21	99.1992.00	Vite M6x60 UNI 5931	8

KIT RICAMBI - SPARE KITS

KIT Nr.	KIT 341	KIT 334	KIT 311	KIT 335	KIT 336	PISTONE - PISTON - D.15			PISTONE - PISTON - D.18		
						KIT 337	KIT 338	KIT 339	KIT 340	KIT 341	KIT 342
Posizioni include Positions included	2 - 3 - 4 5 - 6 (7)	15 - 16 17 - 18 19 (20)	33	8 - 9	13 - 14	22 - 24 25	22 - 23 24 - 25 26	22 - 24 25	22 - 23 24 - 25 26	22 - 24 25	22 - 23 24 - 25 26
Nr. Pcs.	3	3	3	3	3	3	1	3	1	3	1

POS	COD.	DESCRIZIONE - DESCRIPTION - KIT	NR
22	90.2160.00 90.2210.00	Anello ten. alt. D.15.0x24.0x8.5 HP Anello ten. alt. D.18.0x28.0x10.0 HP	337 338 339 340
23	53.2109.56 53.2112.56	Supporto guarnizioni D.18 Supporto guarnizioni D.15	340 338
24	90.2150.00 90.2200.00	Anello ten. alt. D.15.0x19.5 LP Anello ten. alt. D.18.0x22.5 LP	337 338 339 340
25	90.3604.00	OR D. 25.12x1.78 NBR 70SH 2100	337 338 339 340
26	53.2110.56 53.2113.56	Anello per tenuta D.18 Anello per tenuta D.15	340 338
27	98.2100.66	Tappo G3/8"x13	1
28	98.2180.00	Tappo G1/2"x10	1
29	96.6990.00	Rosetta D.7.5x23.0x0.5	3
30	53.2103.82	Guarnizione spugna D.3.0x85.0	1
31	58.2104.51	Protezione	1
32	53.0101.22	Carter pompa	1
33	90.1593.00	Anello rad. D.18.0x24.0x4.0	311
34	53.0501.66	Guida pistone	3
35	97.7338.00	Spinotto D.10x26.5	3
36	53.0300.22	Biella	3
37	99.1838.00	Vite M6x14 UNI 5931	8
38	90.0635.00	Anello d'arresto A25	2
39	90.3859.00	OR D. 25.07x2.62 NBR 70SH 3100	1
40	53.2108.51	Vetrino spia livello olio	1

POS	COD.	DESCRIZIONE - DESCRIPTION - KIT	NR
41	60.0207.65 60.0283.35	Albero ecc. C.7.2 - SS1B1505 Albero ecc. C.10.0 - SS1B1507 SS1B1511 SS1C1509 SS1C1513	1
42	90.0671.00	Anello d'arresto Z130	1
43	91.8328.00	Cuscinetto a sfere	2
44	53.1501.22	Coperchio laterale	1
45	90.3898.00	OR D. 56.82x2.62 NBR 70SH 3225	1
46	90.1641.00	Anello rad. D.25.0x62.0x10.0	1
47	91.4892.00	Linguetta 8.0x7.0x35.0	1
48	98.2108.00	Asta livello olio G 3/8"x45	1
49	90.3917.00	OR D. 88.57x2.62 NBR 70SH 3350	1
50	53.1601.22	Coperchio posteriore	1
51	98.2040.00	Tappo G1/4"x9	1
52	90.3585.00	OR D. 10.82x1.78 NBR 70SH 2043	1
53	99.3037.00	Vite M8x16 5739	4
54	96.7016.00	Rosetta D.8.4x14.4x2.0	4
55	50.2000.74	Piedino pompa	2