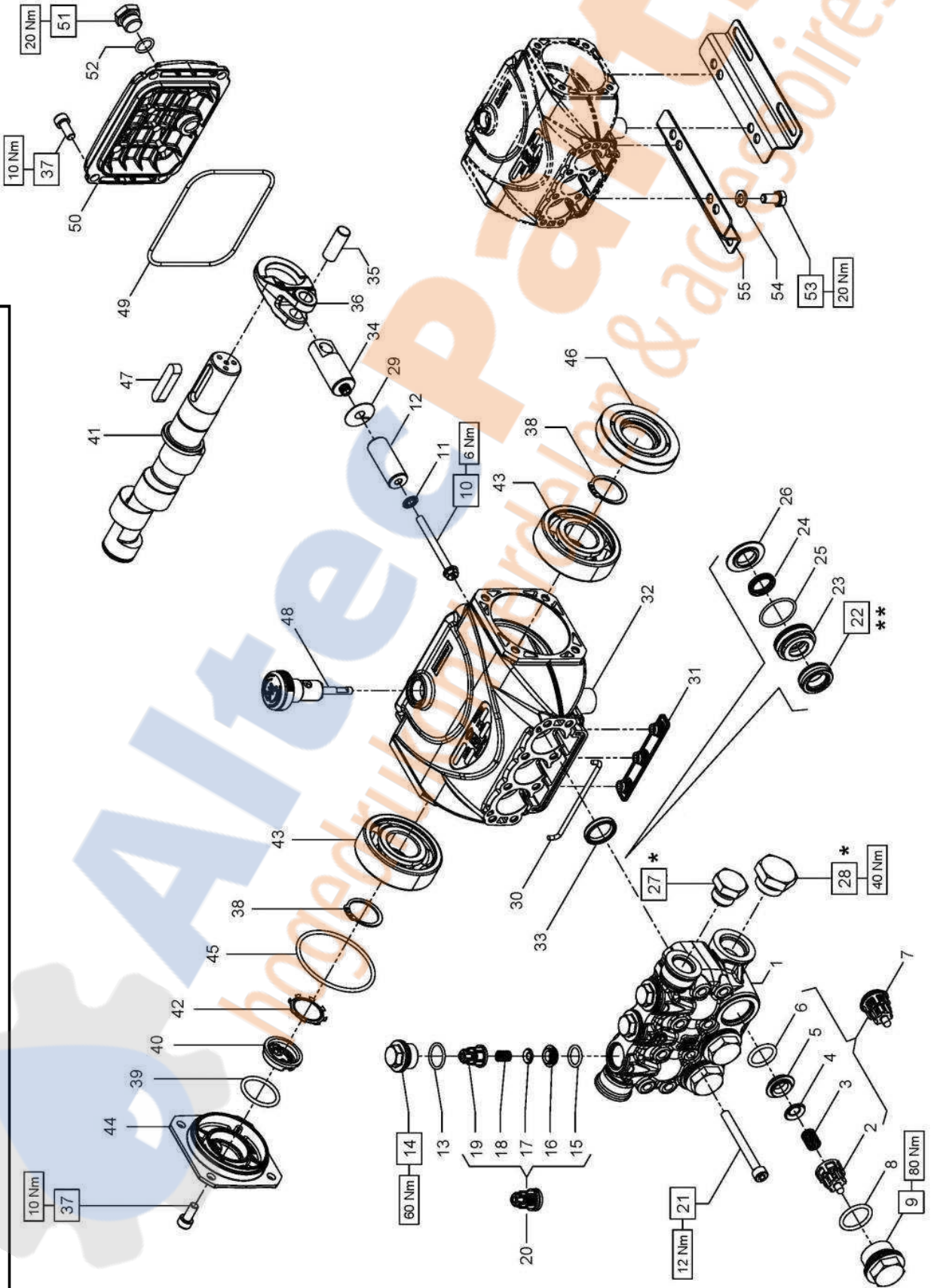


- \* Fissare con Loctite 542 col. ROSSO
  - \* Affix with Loctite 542 col. RED
  - \* Fixer avec de la Loctite 542 couleur ROUGE
  - \* Mit Loctite 542 ROT befestigen
  - \* Fijar con Loctite 542 col. ROJO
  - \* Fixar com Loctite 542 cor. VERMELHA
- 
- \*\* Lubrificare con grasso al silicone OCILIS 250
  - \*\* To lubricate with silicon grease OCILIS 250
  - \*\* Lubrifier avec gras à la silicone OCILIS 250
  - \*\* Sich mit fett zum Silikon OCILIS 250 schmieren
  - \*\* Para lubricar con la grasa al silicón OCILIS 250
  - \*\* Para lubrificar com a graxa ao silicone OCILIS 250



**SS1B1505 - SS1B1507 - SS1B1509  
SS1B1511 - SS1B1513 - SS1B1514  
SS1C1509 - SS1C1511 - SS1C1513  
SS1C1515**

**PISTONE - PISTON D. 15**

|   |   |
|---|---|
| SS1B1505 - SS1B1507 - SS1B1509<br>SS1C1509 - SS1C1511 | SS1B1511 - SS1B1513 - SS1B1514<br>SS1C1513 - SS1C1515 |
|---|---|

**PISTONE - PISTON D. 18**

|   |   |
|---|---|
| SS1B1505 - SS1B1507 - SS1B1509<br>SS1C1509 - SS1C1511 | SS1B1511 - SS1B1513 - SS1B1514<br>SS1C1513 - SS1C1515 |
|---|---|

| POS | COD.                     | DESCRIZIONE - DESCRIPTION - KIT                | NR    |
|-----|--------------------------|--|-------|
| 1   | 53.1215.36<br>53.1216.36 | Testata pistone D. 18<br>Testata pistone D. 15 | 1     |
| 2   | 36.2025.51               | Guida valvola                                  | 341 3 |
| 3   | 94.7373.00               | Molla Dm. 9.4x14.8                             | 341 3 |
| 4   | 36.2001.76               | Valvola sferica                                | 341 3 |
| 5   | 36.2036.66               | Sede valvola                                   | 341 3 |
| 6   | 90.3841.00               | OR D. 17.13x2.62 NBR 70SH 3068                 | 341 3 |
| 7   | 36.7130.01               | Gr. valvola d'aspirazione                      | 341 3 |
| 8   | 90.3847.00               | OR D. 20.29x2.62 NBR 90SH 3081                 | 335 3 |
| 9   | 98.2214.20               | Tappo M24x1.5x13.2                             | 335 3 |
| 10  | 99.1690.00               | Vite M5x55                                     | 3 3   |
| 11  | 96.6905.00               | Rosetta D.5.0x11.5x0.4                         | 3 3   |
| 12  | 63.0405.09<br>53.0400.09 | Pistone D.18x38.5<br>Pistone D.15x38.5         | 3 3   |
| 13  | 90.3593.00               | OR D. 15.60x1.78 NBR 70SH 2062                 | 336 3 |
| 14  | 98.2137.20               | Tappo M18x1.5x10 D.23 F12                      | 336 3 |
| 15  | 90.3674.00               | OR D. 12.00x2.00 NBR 70SH                      | 334 3 |
| 16  | 53.2111.66               | Sede valvola                                   | 334 3 |
| 17  | 36.2112.76               | Valvola sferica                                | 334 3 |
| 18  | 94.7333.00               | Molla Dm. 6.7x10.8                             | 334 3 |
| 19  | 36.2111.51               | Guida valvola                                  | 334 3 |
| 20  | 36.7245.01               | Gr. valvola di mandata                         | 334 3 |
| 21  | 99.1992.00               | Vite M6x60 UNI 5931                            | 8     |

**KIT RICAMBI - SPARE KITS**

| KIT Nr.                              | KIT 341                   | KIT 334                       | KIT 311 | KIT 335 | KIT 336 | KIT 337       | KIT 338                  | KIT 339       | KIT 340                  |
|--------------------------------------|---------------------------|-------------------------------|---------|---------|---------|---------------|--------------------------|---------------|--------------------------|
| Posizioni include Positions included | 2 - 3 - 4<br>5 - 6<br>(7) | 15 - 16<br>17 - 18 19<br>(20) | 33      | 8 - 9   | 13 - 14 | 22 - 24<br>25 | 22 - 23<br>24 - 25<br>26 | 22 - 24<br>25 | 22 - 23<br>24 - 25<br>26 |
| Nr. Pcs.                             | 3                         | 3                             | 3       | 3       | 3       | 3             | 1                        | 3             | 1                        |

| POS | COD.                     | DESCRIZIONE - DESCRIPTION - KIT  | NR |
|-----|--------------------------|--|----|
| 41  | 60.0207.65<br>60.0283.35 | Albero ecc. C.7.2 - SS1B1505<br>Albero ecc. C.10.0 - SS1B1507 SS1B1511<br>SS1C1509 SS1C1513  | 1  |
|     | 53.0200.35<br>53.0201.35 | Albero ecc. C.13.0 - SS1B1514<br>Albero ecc. C.12.0 - SS1B1509 SS1B1513<br>SS1C1511 SS1C1515 | 1  |
| 42  | 90.0671.00               | Anello d'arresto Z130  | 1  |
| 43  | 91.8328.00               | Cuscinetto a sfere   | 2  |
| 44  | 53.1501.22               | Coperchio laterale   | 1  |
| 45  | 90.3898.00               | OR D. 56.82x2.62 NBR 70SH 3225   | 1  |
| 46  | 90.1641.00               | Anello rad. D.25.0x62.0x10.0   | 1  |
| 47  | 91.4892.00               | Linguetta 8.0x7.0x35.0   | 1  |
| 48  | 98.2108.00               | Asta livello olio G 3/8"x45  | 1  |
| 49  | 90.3917.00               | OR D. 88.57x2.62 NBR 70SH 3350   | 1  |
| 50  | 53.1601.22               | Coperchio posteriore   | 1  |
| 51  | 98.2040.00               | Tappo G1/4"x9  | 1  |
| 52  | 90.3585.00               | OR D. 10.82x1.78 NBR 70SH 2043   | 1  |
| 53  | 99.3037.00               | Vite M8x16 5739  | 4  |
| 54  | 96.7016.00               | Rosetta D.8.4x14.4x2.0   | 4  |
| 55  | 50.2000.74               | Piedino pompa  | 2  |

| POS | COD.                     | DESCRIZIONE - DESCRIPTION - KIT                        | NR                |
|-----|--------------------------|--|-------------------|
| 22  | 90.2160.00               | Anello ten. alt. D.15.0x24.0x8.5 HP                    | 337 338 3         |
|     | 90.2210.00               | Anello ten. alt. D.18.0x28.0x10.0 HP                   | 339 340 3         |
| 23  | 53.2109.56<br>53.2112.56 | Supporto guarnizioni D.18<br>Supporto guarnizioni D.15 | 340 338 3         |
| 24  | 90.2150.00               | Anello ten. alt. D.15.0x19.5 LP                        | 337 338 3         |
|     | 90.2200.00               | Anello ten. alt. D.18.0x22.5 LP                        | 339 340 3         |
| 25  | 90.3604.00               | OR D. 25.12x1.78 NBR 70SH 2100                         | 337 338 339 340 3 |
| 26  | 53.2110.56<br>53.2113.56 | Anello per tenuta D.18<br>Anello per tenuta D.15       | 340 338 3         |
| 27  | 98.2100.66               | Tappo G3/8"x13   | 1                 |
| 28  | 98.2180.00               | Tappo G1/2"x10   | 1                 |
| 29  | 96.6990.00               | Rosetta D.7.5x23.0x0.5                                 | 3                 |
| 30  | 53.2103.82               | Guarnizione spugna D.3.0x85.0                          | 1                 |
| 31  | 58.2104.51               | Protezione   | 1                 |
| 32  | 53.0101.22               | Carter pompa   | 1                 |
| 33  | 90.1593.00               | Anello rad. D.18.0x24.0x4.0                            | 311 3             |
| 34  | 53.0501.66               | Guida pistone  | 3                 |
| 35  | 97.7338.00               | Spinotto D.10x26.5                                     | 3                 |
| 36  | 53.0300.22               | Biella   | 3                 |
| 37  | 99.1838.00               | Vite M6x14 UNI 5931                                    | 8                 |
| 38  | 90.0635.00               | Anello d'arresto A25                                   | 2                 |
| 39  | 90.3859.00               | OR D. 25.07x2.62 NBR 70SH 3100                         | 1                 |
| 40  | 53.2108.51               | Vetrino spia livello olio                              | 1                 |