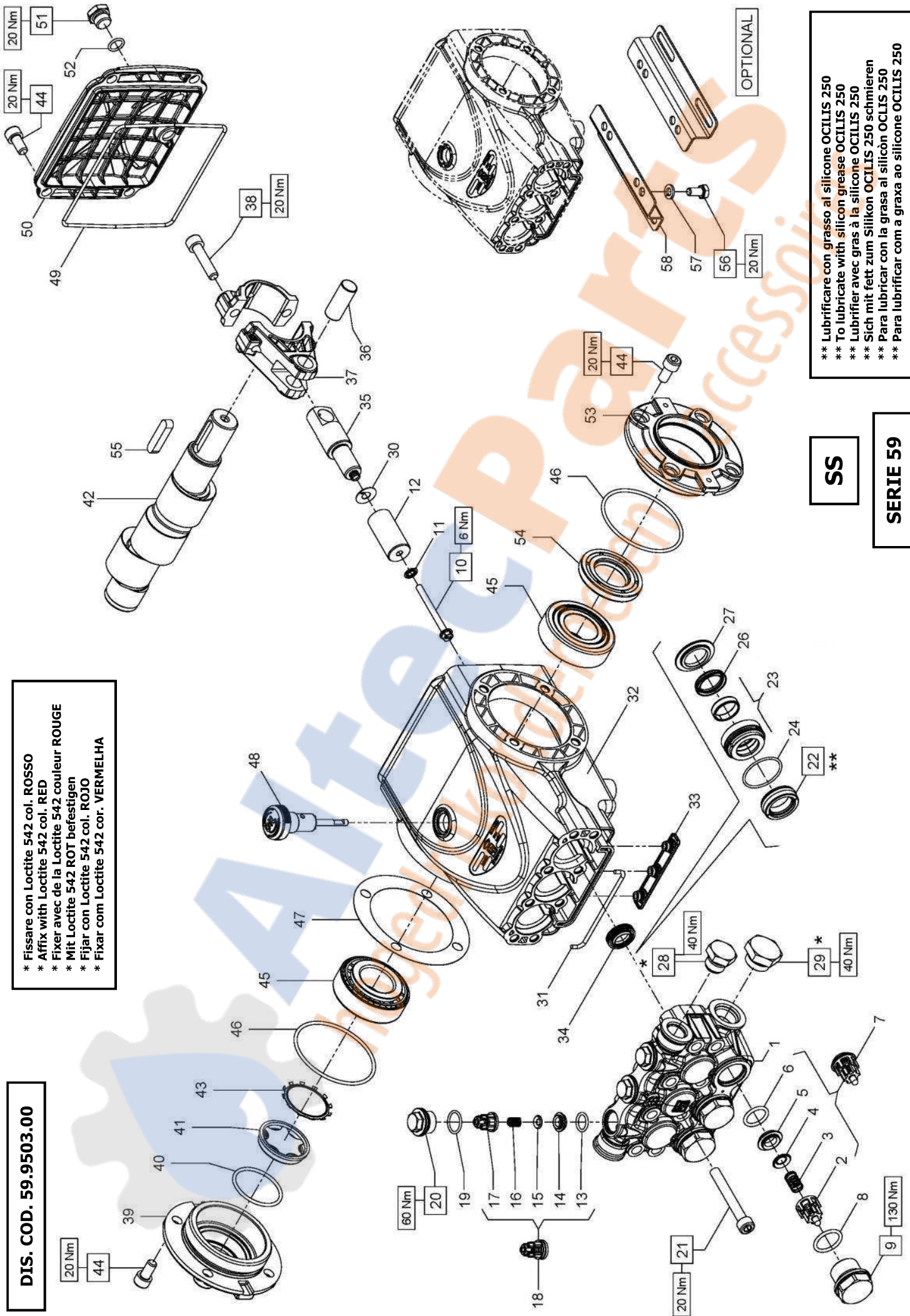


DIS. COD. 59.9503.00


- * Fissare con Loctite 542 col. ROSSO
- * Affix with Loctite 542 col. RED
- * Fixer avec de la Loctite 542 couleur ROUGE
- * Mit Loctite 542 ROT befestigen
- * Fijar con Loctite 542 cor. ROJO
- * Fixar com Loctite 542 cor. VERMELHA



SS

SERIE 59

- ** Lubrificare con grasso al silicone OCILIS 250
- ** To lubricate with silicon grease OCILIS 250
- ** Lubrifier avec gras à la silicone OCILIS 250
- ** Sich mit fett zum Silikon OCILIS 250 schmieren
- ** Para lubricar con la grasa al silicon OCILIS 250
- ** Para lubricar com a graxa ao silicone OCILIS 250



SS3B2013 - SS3B2015 - SS3B2018
SS3B2021 - SS3C2015 - SS3C2018 - SS3C2021

PISTONE - PISTON D. 20		PISTONE - PISTON D. 22	
SS3B2013 - SS3B2015 SS3C2015 - SS3C2018	SS3B2018 - SS3B2021 - SS3C2021		

POS	COD.	DESCRIZIONE - DESCRIPTION - KIT	NR
1	59.1222.36 59.1223.36	Testata pompa D.20 Testata pompa D.22	1
2	36.2025.51	Guida valvola d'aspirazione	341 3
3	94.7373.00	Molla Dm. 9.4x14.8	341 3
4	36.2001.76	Valvola sferica d'aspirazione	341 3
5	36.2036.66	Sede valvola d'aspirazione	341 3
6	90.3841.00	OR D.17.13x2.62 NBR SH. 70 3068 341	3
7	36.7130.01	Gr. valvola aspirazione	341 3
8	90.3847.00	OR D.20.24x2.62 NBR 70 SH 3081 349	3
9	98.2229.00	Tappo M24x1.5x17	349 3
10	99.1690.00	Vite M5x55	3
11	96.6905.00	Rosetta D. 5.0x11.5x0.4	3
12	59.0400.09 59.0401.09	Pistone D. 20x42 Pistone D. 22x42	3
13	90.3674.00	OR D.12.00x2.00 NBR SH. 70	334 3
14	53.2111.66	Sede valvola di mandata	334 3
15	36.2112.76	Valvola sferica di mandata	334 3
16	94.7333.00	Molla Dm. 6.7x10.4	334 3
17	36.2111.51	Guida valvola di mandata	334 3
18	36.7245.01	Gr. valvola di mandata	334 3

KIT RICAMBI - SPARE KITS							PISTON D. 20		PISTON D. 22	
KIT Nr.	KIT 341	KIT 334	KIT 349	KIT 336	KIT 271	KIT 350	KIT 351	KIT 352	KIT 353	
Posizioni include Positions included	2 - 3 - 4 5 - 6 (7)	13 - 14 - 15 16 - 17 (18)	8 - 9	19 - 20	34	22 - 24 26	22 - 23 - 24 26 - 27	22 - 24 26	22 - 23 - 24 26 - 27	
Nr. Pcs.	3	3	3	3	3	3	1	3	1	

POS	COD.	DESCRIZIONE - DESCRIPTION - KIT	NR	POS	COD.	DESCRIZIONE - DESCRIPTION - KIT	NR
19	90.3593.00	OR D.15.60x1.78 NBR 70 SH 2062 336	3	39	59.1502.22	Coperchio laterale spia	1
20	98.2137.20	Tappo M18x1.5x10	336 3	40	90.3877.00	OR D. 39.34x2.62 NBR 70 SH. 3156	1
21	99.3176.00	Vite M8x60 UNI 5931	8	41	70.2118.01	Spia livello olio	1
22	90.2260.00 90.2312.00	An. ten. alt. D. 20.0x30.0x10 HP 350 351 An. ten. alt. D. 22.0x32.0x10 HP 352 353	3	42	59.0201.35 59.0202.35 59.0203.35	Albero ecc. C.13 - SS3B2021 Albero ecc. C.12 - SS3B2015 SS3B2018 SS3C2018 SS3C2021 Albero ecc. C.10 - SS3B2013 SS3C2015	1
23	59.6064.01 59.6065.01	Gr. supp. guarn./boccola D.20 351 Gr. supp. guarn./boccola D.22 353	3	43	90.0756.00	Anello d'arresto ZJ45	1
24	90.3612.00	OR D. 31.47x1.78 NBR 70 SH. 2125 350 351 352 353	3	44	99.3038.00	Vite M8x16 UNI 5931	12
26	90.2250.00 90.2300.00	Anello ten. alt. D. 20x26.15 LP 350 351 Anello ten. alt. D. 22x26.15 LP 352 353	3	45	91.8375.00	Cuscinetto a rulli	2
27	59.2115.56 59.2116.56	Anello per tenuta D. 20 351 Anello per tenuta D. 22 353	3	46	90.3913.00	OR D. 67.95x2.62 NBR SH. 70 3628	2
28	98.2100.66	Tappo G 3/8"x13	1	47	97.5678.00 97.5680.00	Spessore D. 74.5x104.0x0.1 Spessore D. 74.5x104.0x0.3	1
29	98.2180.00	Tappo G 1/2"x10	1	48	98.2105.00	Asta livello olio G 3/8"x51	1
30	96.6990.00	Rosetta D. 7.5x23.0x0.5	3	49	90.3922.00	OR D. 133.02x2.62 NBR SH. 70 3525	1
31	59.2110.82	Guarnizione spugna D. 3x103	1	50	59.1601.22	Coperchio posteriore	1
32	59.0101.22	Carter pompa	1	51	98.2040.00	Tappo G 1/4"x9	1
33	58.2104.51	Protezione	1	52	90.3585.00	OR D. 10.82x1.78 NBR SH. 70 2043	1
34	90.1565.50	Anello rad. D. 15.0x24.0x5.0/7.0 271	3	53	59.1501.22	Coperchio laterale aperto	1
35	59.0501.66	Guida pistone	3	54	90.1648.00	Anello rad. D. 30.0x55.0x7.0	1
36	97.7399.00	Spinotto D. 14x34	3	55	91.4892.00	Linguetta 8x7x35	1
37	59.0300.01	Biella	3	56	99.3037.00	Vite M 8x16 UNI 5739	4
38	99.3099.00	Vite serraggio biella M 8x35	6	57	96.7016.00	Rosetta D. 8.4 UNI 1751	4
				58	50.2000.74	Piedino pompa	2