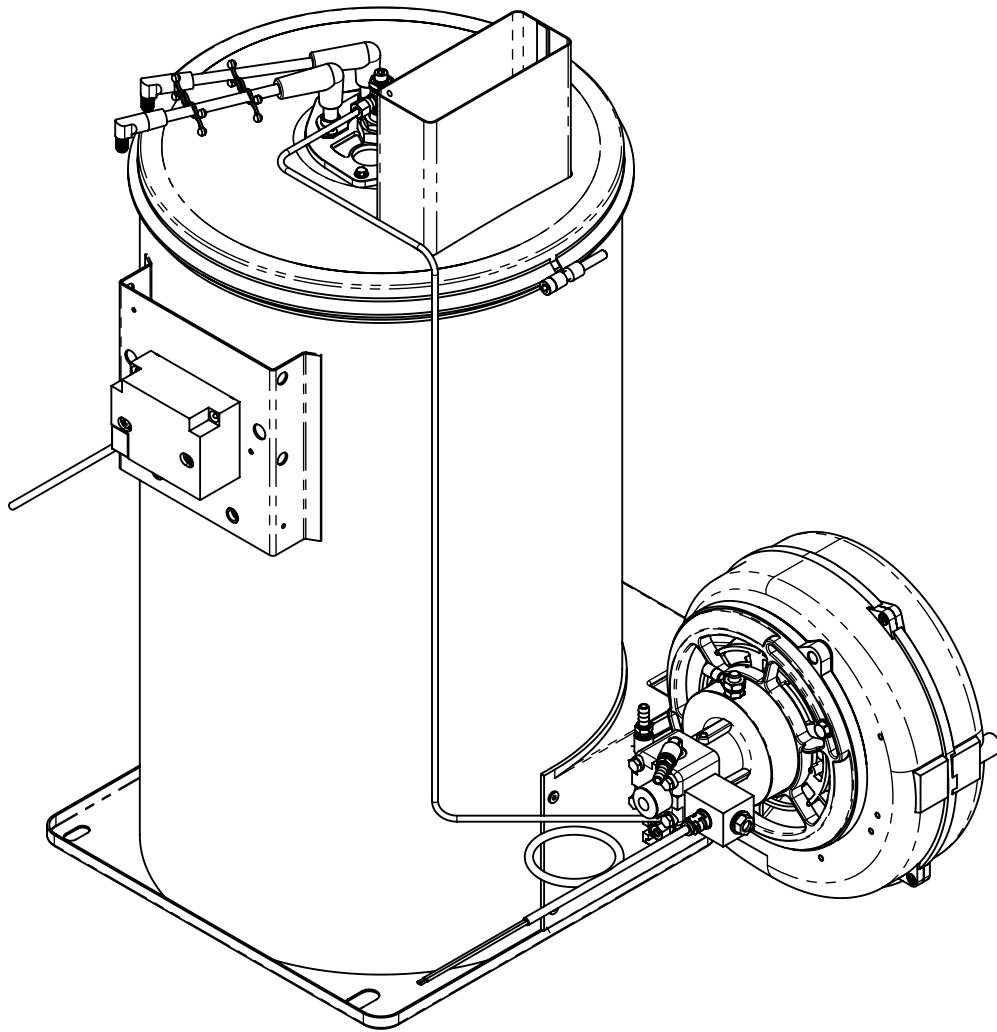


# Boiler 21L 230V



General table

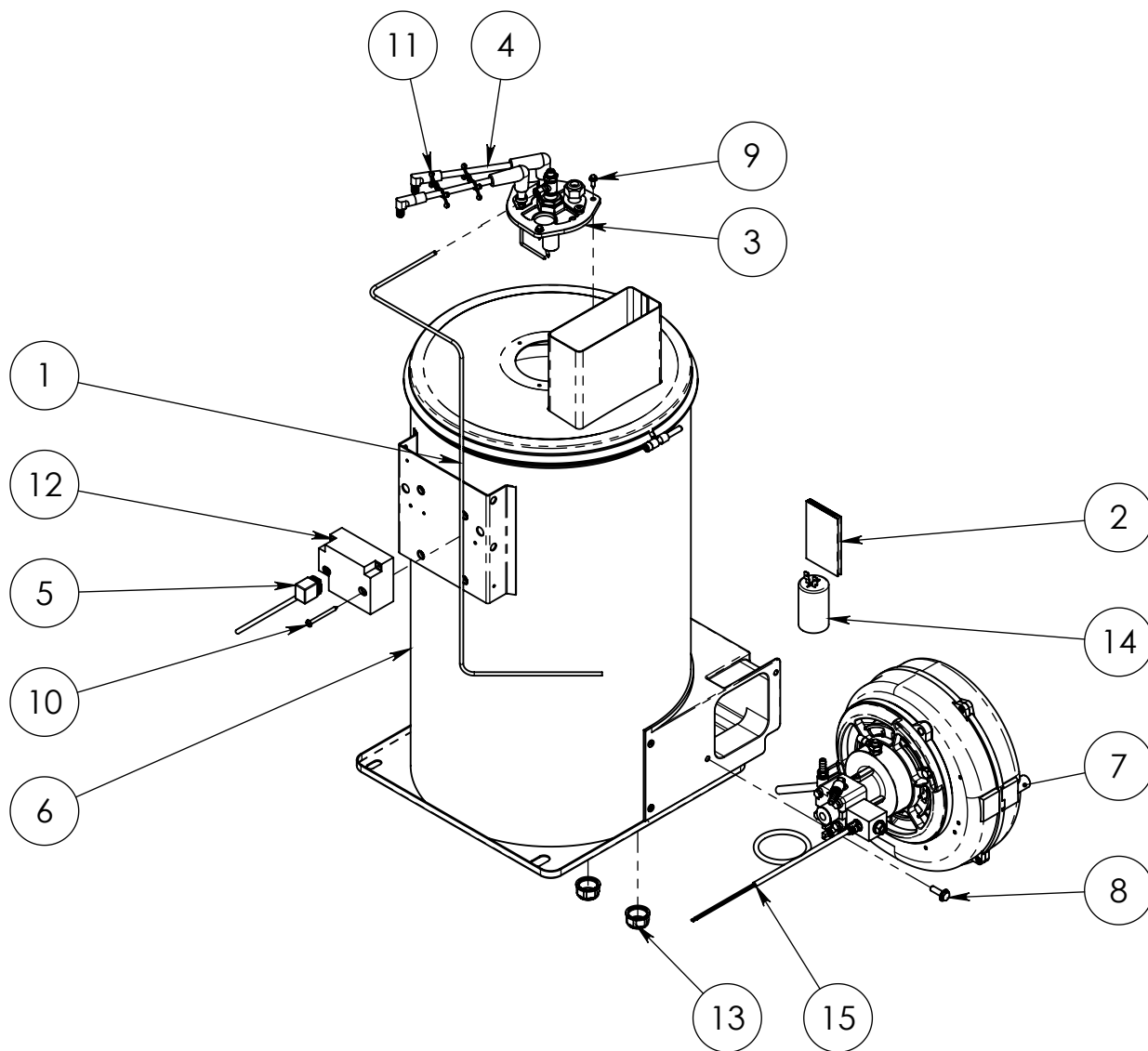
Code	Flow Rate (Lt/min)	Pressure (Bar)	Pressure (Psi)	Diesel Nozzle	Motor (Volt)	Gpm	Net weight (Kg)	Net weight (Lbs)
3.026.02.013	21	250	3625.94	2	230V	5.5	57	125.66

General table

Coil			
m	Thickness	ø	Ft
35	2.6	3/8"	114

# Exploded Boiler

## Esploso Caldaia

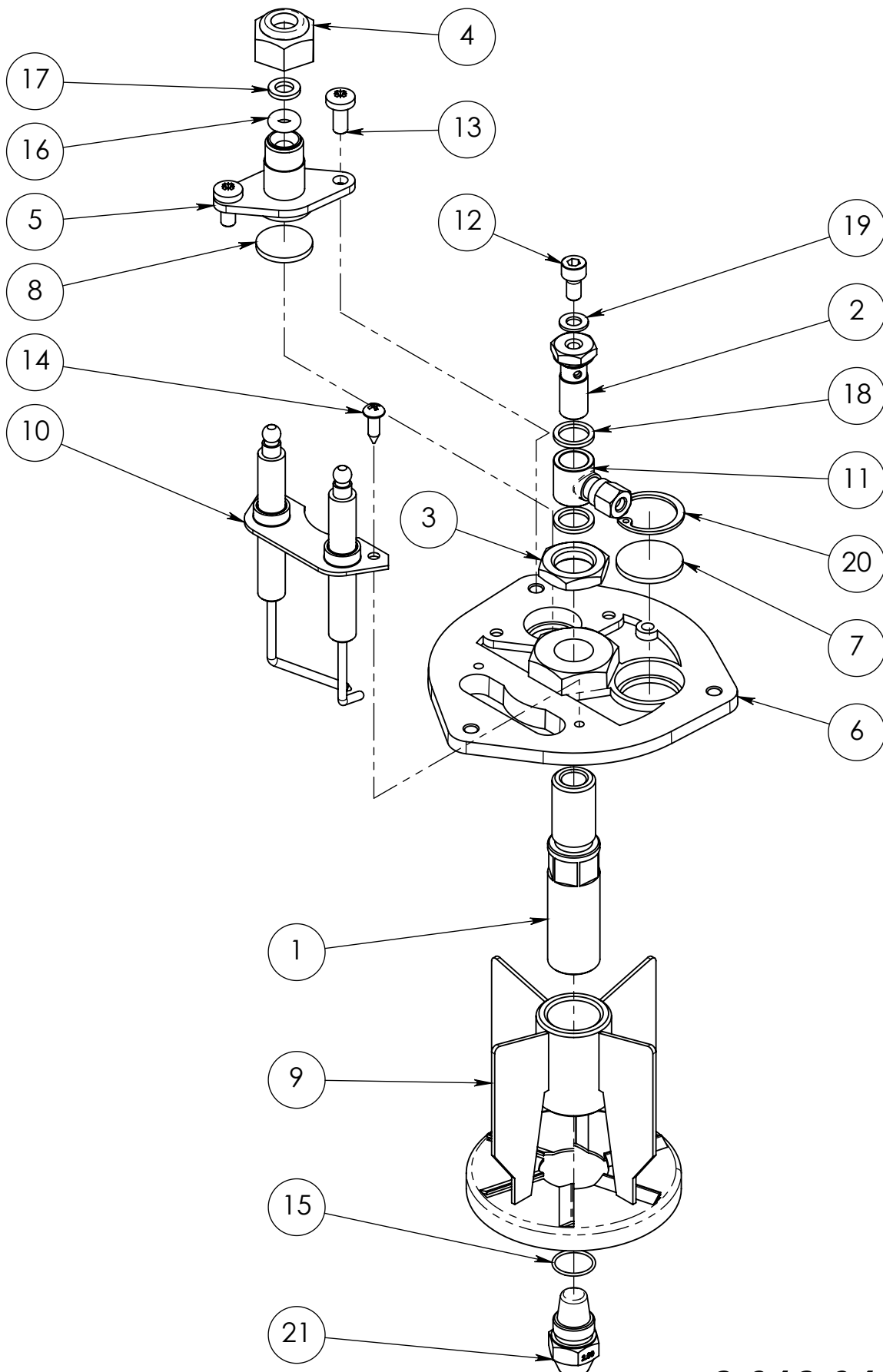


**3.026.02.013.M**

Pos.	Q.Ty	Code	ITALIANO	ENGLISH	DEUTSCH	ESPAÑOL	FRANCAIS
1	1	1.044.54.003	Tubo	Pipe	Rohr	Tubo	Tuyau
2	1	1.093.02.014	Schema collegamento caldaia	Boilers connction	Elektrish Verbindung	Esquema colegamento calderas	Schéma de connexion chaudières
3	1	2.012.04.035	Coperchio elettrodi W-WSF 4050/5000	Electrodes cover W-WSF 4050/5000	Elektrodendeckel W-WSF 4050/5000	Tapón electrodos W-WSF 4050/5000	Couvercle électrodes W-WSF 4050/5000
4	2	2.020.04.035	Cavo L=600	Cable L=600	Kabel L=600	Cable L=600	Cable L=600
5	1	2.020.04.038	Cavo	Cable	Kabel	Cable	Cable
6	1	2.041.04.010	Caldaia W4000/5000/5050	Boiler W4000/5000/5050	Kessel W4000/5000/5050	Caldera W4000/5000/5050	Chaudière W4000/5000/5050
7	1	3.038.02.012	Convogliatore 230V 50Hz	Conveyor 230V 50Hz	Foerderer 230V 50Hz	Convoyador 230V 50Hz	Convoyeur 230V 50Hz
8	2	4.002.92.011	Vite M6x20 UNI 8111	Screw M6x20 UNI 8111	Schrauben M6x20 UNI 8111	Tornillo M6x20 UNI 8111	Vis M6x20 UNI 8111
9	3	4.002.94.017	Vite autofilettante 3.9x13	Self-tapping Screw 3.9x13	Selbschneidendeschraube 3.9x13	Tornillo autoblocante 3.9x13	Vis autofiletant 3.9x13
10	2	4.002.94.036	Vite tc 3.9x45 zeb 6954	Screw tc 3.9x45 zeb 6954	Schrauben tc 3.9x45 zeb 6954	Tornillo tc 3.9x45 zeb 6954	Vis tc 3.9x45 zeb 6954
11	2	4.022.04.016	Fascetta 2x ø5.1/ø7.6	Clamp 2x ø5.1/ø7.6	Klemme 2x ø5.1/ø7.6	Faja 2x ø5.1/ø7.6	Petit bande 2x ø5.1/ø7.6
12	1	4.030.04.010	Trasformatore 30mA 230V	Transformer 30mA 230V	Stromwandler 30mA 230V	Transformador 30mA 230V	Transformateur 30mA 230V
13	2	4.034.04.019	Tappo 1/2 GAS	Cap 1/2 GAS	Deckel 1/2 GAS	Tapón 1/2 GAS	Bouchon 1/2 GAS
14	1	4.035.02.017	Condensatore 8mf 450V	Condenser 8mf 450V	Kondensator 8mf 450V	Condensador 8mf 450V	Condenseur 8mf 450V
15	1	4.040.04.006	Bobina 24V	Coil 24V	Spule 24V	Bobina 24V	Bobine 24V

# Electrodes cover W-WSF 4050/5000

Coperchio elettrodi W-WSF 4050/5000



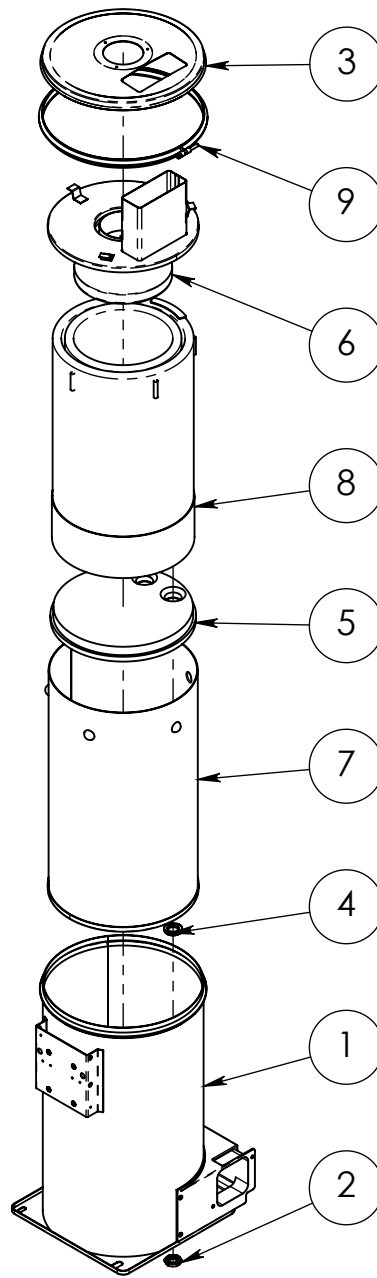
**2.012.04.035.E**



Pos.	Q.Ty	Code	ITALIANO	ENGLISH	DEUTSCH	ESPAÑOL	FRANCAIS
1	1	1.001.04.006	Raccordo 9/19 - G1/8	Connection 9/19 - G1/8	Leiste 9/19 - G1/8	Filete 9/19 - G1/8	Filet 9/19 - G1/8
2	1	1.012.14.012	Tappo G1/8+CONTR.PRESS.M5	Cap G1/8+CONTR.PRESS.M5	Deckel G1/8+CONTR.PRESS.M5	Tapón G1/8+CONTR.PRESS.M5	Bouchon G1/8+CONTR.PRESS.M5
3	1	1.015.24.003	Ghiera	Ferrule	Zwinge	Abrazadera	Embout
4	1	1.015.32.008	Ghiera G1/4"	Ferrule G1/4"	Zwinge G1/4"	Abrazadera G1/4"	Embout G1/4"
5	1	1.074.04.005	Flangia	Flange	Flansch	Borde	Bride
6	1	1.074.04.018	Flangia M15x1.5 (CF)	Flange M15x1.5 (CF)	Flansch M15x1.5 (CF)	Borde M15x1.5 (CF)	Bride M15x1.5 (CF)
7	1	1.102.04.001	Vetrino	Glass	Glass	Vidrio	Vèrre
8	1	1.102.04.003	Vetrino ø19	Glass ø19	Glass ø19	Vidrio ø19	Vèrre ø19
9	1	2.009.04.002	Deflettore Work	Deflector Work	Deflektor Work	Deflector Work	Défecteur Work
10	1	2.032.04.004	Elettrodi	Electrodes	Elektrode	Electrodos	Electrodes
11	1	3.050.34.001	Raccordo	Connection	Leiste	Filete	Filet
12	1	4.002.14.022	Vite M5x10 UNI5931	Screw M5x10 UNI5931	Schrauben M5x10 UNI5931	Tornillo M5x10 UNI5931	Vis M5x10 UNI5931
13	2	4.002.72.001	Vite M5x12 UNI7687	Screw M5x12 UNI7687	Schrauben M5x12 UNI7687	Tornillo M5x12 UNI7687	Vis M5x12 UNI7687
14	2	4.002.94.005	Vite autofilettante 3.9x13	Self-tapping Screw 3.9x13	Gewindeschneidschra ube 3.9x13	Tornillo Self-tapping 3.9x13	Vies Autofilettante 3.9x13
15	1	4.005.14.004	OR 0130-1	O-ring 0130-1	O-ring 0130-1	OR 0130-1	Joint torique 0130-1
16	1	4.005.24.013	Guarnizione OR ø4.34X3.53	Gasket OR ø4.34X3.53	Dichtung OR ø4.34X3.53	Guarnición OR ø4.34X3.53	Garniture OR ø4.34X3.53
17	1	4.008.02.001	Rondella 6.4x11x1.6 DIN433 UNI6592 ZEB	Washer 6.4x11x1.6 DIN433 UNI6592 ZEB	Unterlegscheibe 6.4x11x1.6 DIN433 UNI6592 ZEB	Arandela 6.4x11x1.6 DIN433 UNI6592 ZEB	Rondelle 6.4x11x1.6 DIN433 UNI6592 ZEB
18	2	4.008.12.005	Rondella Rame G1/8	Copper washer G1/8	Kupferunterlegsscheib e G1/8	Arandelade cobre G1/8	Rondelle cuivre G1/8
19	1	4.008.14.003	Rondella Rame M5	Copper washer M5	Kupferunterlegsscheib e M5	Arandela de cobre M5	Rondelle cuivre M5
20	1	4.025.04.002	Seeger	Seeger	Seeger	Seeger	Seeger
21	1	4.027.14.011	Ugello 2.00 (60°B)	Nozzle 2.00 (60°B)	Duse 2.00 (60°B)	Boquilla 2.00 (60°B)	Buse 2.00 (60°B)

# Preassembled Boiler W4000/5000/5050

## Premontato Caldaia W4000/5000/5050

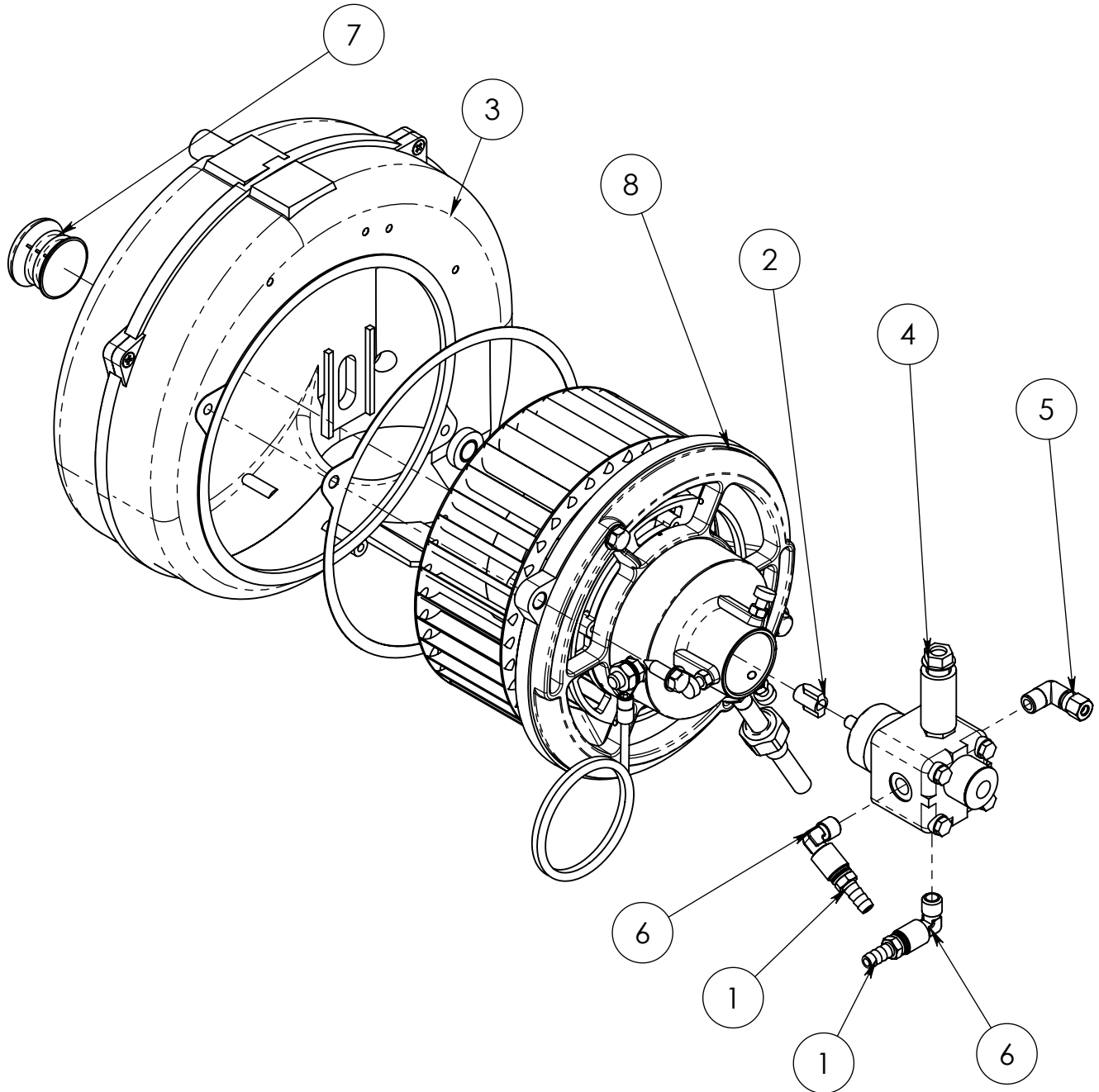


**2.041.04.010.I**

Pos.	Q.Ty	Code	ITALIANO	ENGLISH	DEUTSCH	ESPAÑOL	FRANCAIS
1	1	2.111.04.001	Camicia esterna W5050	External jacket W5050	Äusserer Mantel W5050	Camisa externa W5050	Chemise externe W5050
2	2	1.015.24.002	Ghiera 1/2"G	Ferrule 1/2"G	Zwinge 1/2"G	Abrazadera 1/2"G	Embout 1/2"G
3	1	1.054.04.006	Coperchio	Cover	Deckel	Tapa	Couvercle
4	2	1.060.04.018	Distanziale	Spacer	Distanzstueck	Distanciador	Entretoise
5	1	1.094.04.005	Isolante termico 20-25L	Thermal insulator 20-25L	Waermeschutzstoff 20-25L	Aislador termal 20-25L	Isolateur thermique 20-25L
6	1	2.012.04.013	Coperchio W 20L	Cover W 20L	Deckel W 20L	Tapa W 20L	Couvercle W 20L
7	1	2.023.04.010	Camicia interna 25L	Internal jacket 25L	Innerer Mantel 25L	Camisa interior 25L	Chemise interne 25L
8	1	2.029.04.008	Serpentina 25L	Coil 25L	Schlange 25L	Serpentin 25L	Serpentin 25L
9	1	2.056.04.001	Fascetta ø317	Clamp ø317	Klemme ø317	Faja ø317	Petit bande ø317

# Conveyor 230V 50Hz

## Convogliatore 230V 50Hz



**KIT CONVEYOR MOTOR REPLACEMENT: 9.014.02.005**

**3.038.02.012 .D**

Pos.	Q.tà	Cod.	ITALIANO	ENGLISH	DEUTSCH	ESPAÑOL	FRANCAIS
1	2	1.005.04.002	Innesto rapido	Quick coupling	Schnelle kupplung	Enchufe rapido	Raccord rapid
2	1	1.098.02.001	Giunto DX	Coupling DX	Kupplung DX	Acoplamiento DX	Accouplement DX
3	1	2.017.22.001	Carter Montato	Assembled Guard	Montiertes Gehäuse	Ensamblado Càrter	Carter assemblé
4	1	3.015.24.007	Pompa DX	Pump DX	Pump DX	Bomba DX	Pompe DX
5	1	3.050.14.001	Raccordo	Connection	Leiste	Filete	Filet
6	2	4.012.04.013	Raccordo a L G1/4	L Connection G1/4	Leiste L G1/4	Filete L G1/4	Filet L G1/4
7	1	4.036.02.002	Tappo ø32	Plug ø32	Deckel ø32	Tapón ø32	Bouchon ø32
8	1	9.014.02.005	Ricambio Motore Elettrico 220V2PDX	Electric Motor Spare part 220V2PDX	ElektromotorErsatzteil 220V2PDX	Motor Eléctrico de repuesto 220V2PDX	Moteur électrique de rechange 220V2PDX