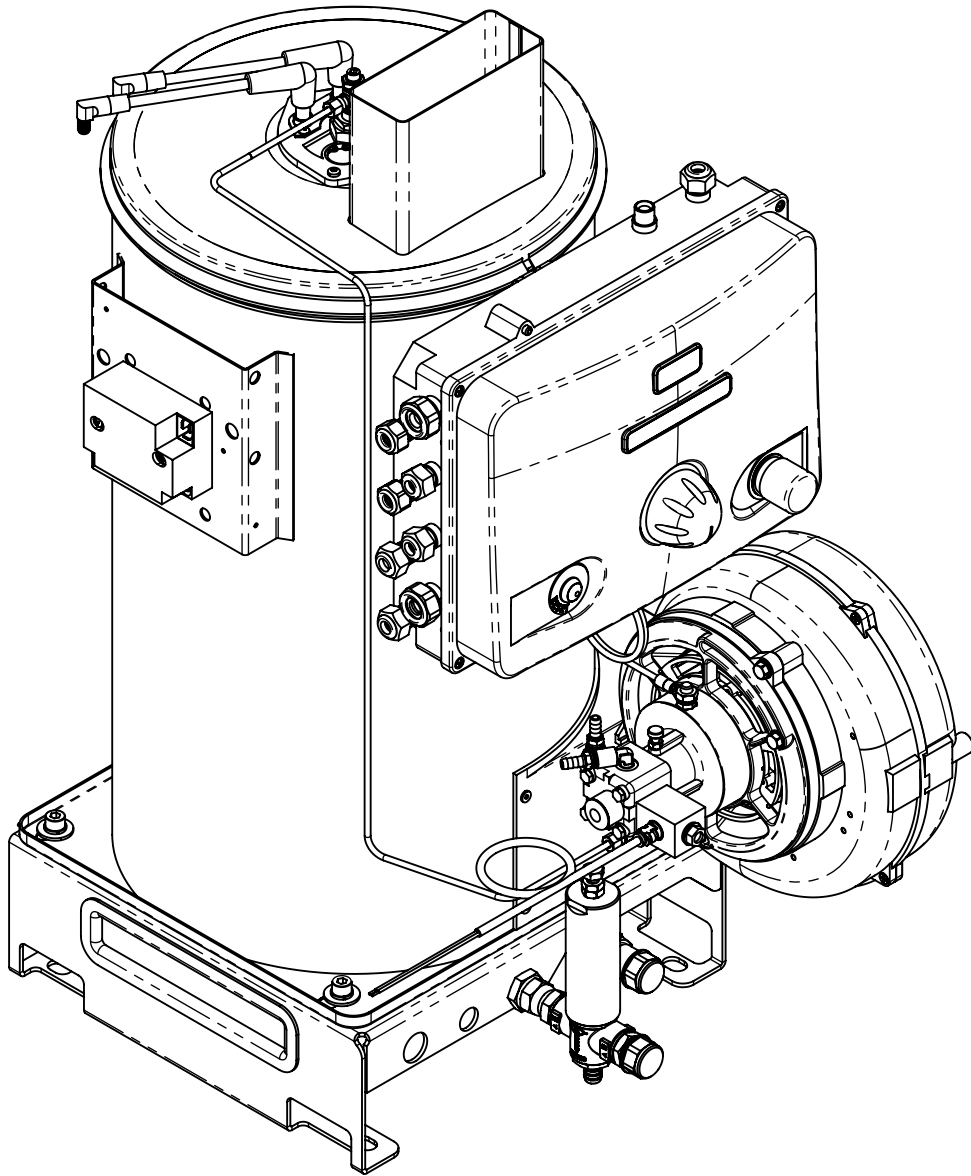


# Boiler 25L 230V



General table

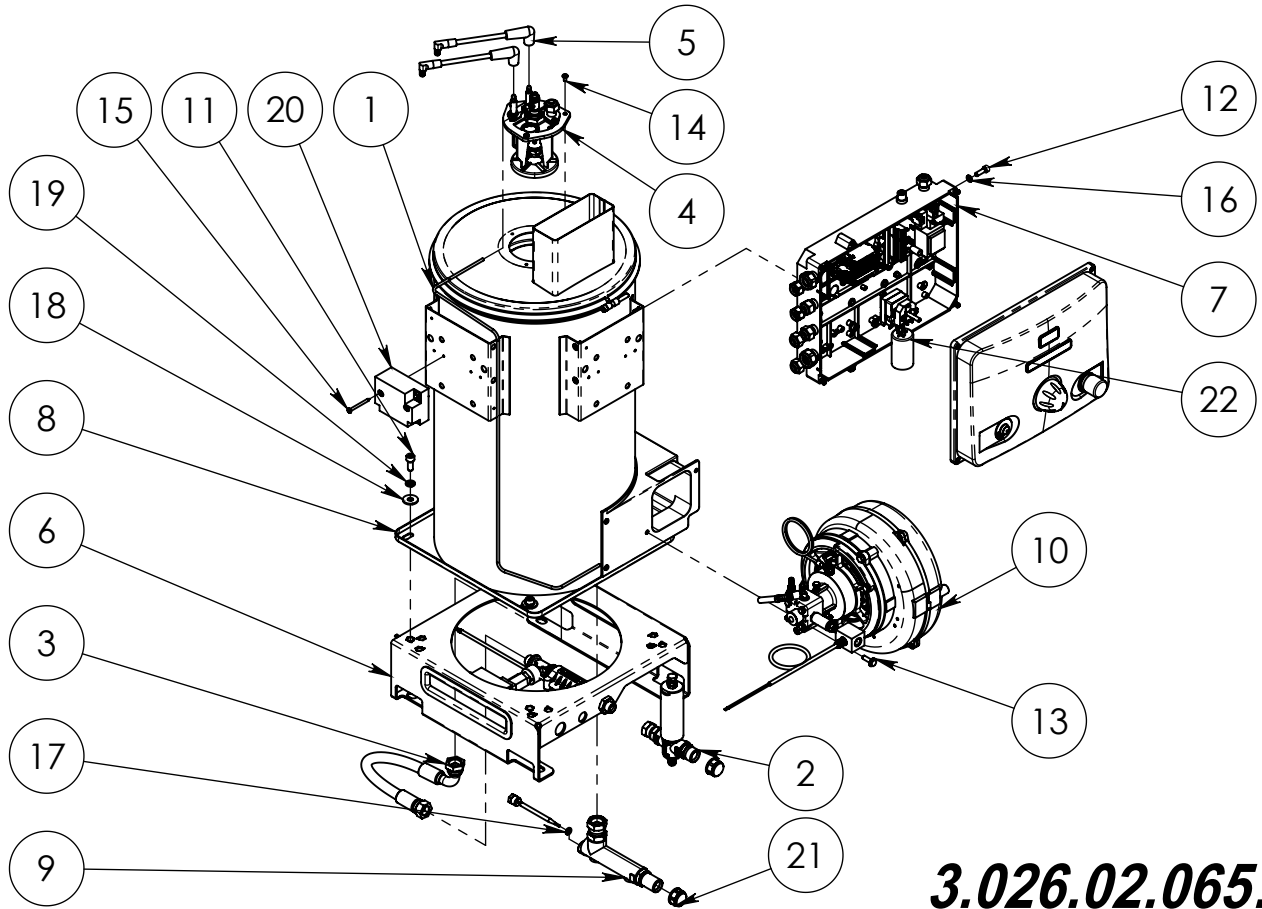
Code	Flow Rate (Lt/min)	Pressure (Bar)	Pressure (Psi)	Diesel Nozzle	Motor (Volt)	Gpm	Net weight (Kg)	Net weight (Lbs)
3.026.02.065	25	350	5076.32	2.25	230	6.6	62	136.68

General table

Coil			
m	Thickness	ø	Ft
35	2.77	3/8"	114

# Exploded Boiler

## Esploso Caldaia

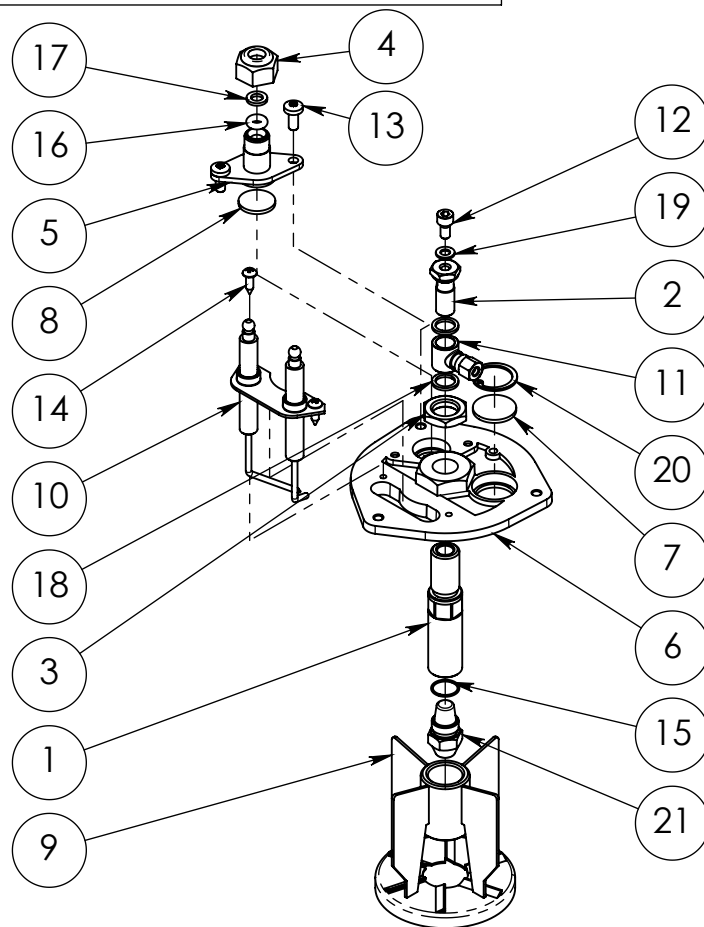


**3.026.02.065.E**

Pos.	Q.Ty	Code	ITALIANO	ENGLISH	DEUTSCH	ESPAÑOL	FRANCAIS
1	1	1.044.54.012	Tubo	Pipe	Rohr	Tubo	Tuyau
2	1	2.003.12.004	Valvola di sicurezza	Safety pressure valve	Max druck Einstellungsventile	Valvula de seguridad	Soupage de sécurité
3	1	2.006.24.085	Tubo R2 3/8" 400BAR L350	Pipe R2 3/8" 400BAR L350	Rohr R2 3/8" 400BAR L350	Tubo R2 3/8" 400BAR L350	Tuyau R2 3/8" 400BAR L350
4	1	2.012.04.033	Coperchio elettrodi W5050	Electrodes cover W5050	Elektrodendeckel W5050	Tapón electrodos W5050	Couvercle électrodes W5050
5	2	2.020.04.035	Cavo L=600	Cable L=600	Kabel L=600	Cable L=600	Cable L=600
6	1	2.024.02.004	Supporto 15/25L - 350Bar	Support 15/25L - 350Bar	Halter 15/25L - 350Bar	Soporte 15/25L - 350Bar	Support 15/25L - 350Bar
7	1	2.031.04.193	Quadro elettrico 230V	Electric pannel 230V	Schalttafel 230V	Cuadro eléctrico 230V	Panneu électrique 230V
8	1	2.041.04.034	Caldaia 25L 350BAR	Boiler 25L 350BAR	Kessel 25L 350BAR	Caldera 25L 350BAR	Chaudière 25L 350BAR
9	1	2.048.04.023	Collettore 350BAR FIREBOX	Collector 350BAR FIREBOX	Kollektor 350BAR FIREBOX	Colector 350BAR FIREBOX	Collecteur 350BAR FIREBOX
10	1	3.038.02.011	Convogliatore 230V 50/60Hz	Conveyor 230V 50/60Hz	Foerderer 230V 50/60Hz	Convoyador 230V 50/60Hz	Convoyeur 230V 50/60Hz
11	3	4.002.14.005	Vite M8x20 UNI5931	Screw M8x20 UNI5931	Schrauben M8x20 UNI5931	Tornillo M8x20 UNI5931	Vis M8x20 UNI5931
12	4	4.002.14.020	Vite M6x20 UNI5931	Screw M6x20 UNI5931	Schrauben M6x20 UNI5931	Tornillo M6x20 UNI5931	Vis M6x20 UNI5931
13	2	4.002.92.011	Vite M6x20 UNI 8111	Screw M6x20 UNI 8111	Schrauben M6x20 UNI 8111	Tornillo M6x20 UNI 8111	Vis M6x20 UNI 8111
14	3	4.002.94.034	Vite Ph M4x8 UNI8112	Screw Ph M4x8 UNI8112	Schrauben Ph M4x8 UNI8112	Tornillo Ph M4x8 UNI8112	Vis Ph M4x8 UNI8112
15	2	4.002.94.036	Vite tc 3.9x45 zeb 6954	Screw tc 3.9x45 zeb 6954	Schrauben tc 3.9x45 zeb 6954	Tornillo tc 3.9x45 zeb 6954	Vis tc 3.9x45 zeb 6954
16	5	4.008.02.001	Rondella 6.4x11x1.6 DIN433 UNI6592 ZEB	Washer 6.4x11x1.6 DIN433 UNI6592 ZEB	Unterlegscheibe 6.4x11x1.6 DIN433 UNI6592 ZEB	Arandela 6.4x11x1.6 DIN433 UNI6592 ZEB	Rondelle 6.4x11x1.6 DIN433 UNI6592 ZEB
17	1	4.008.12.003	Rondella Rame G1/4	Copper washer G1/4	Kupferunterlegscheibe G1/4	Arandela de cobre G1/4	Rondelle cuivre G1/4
18	3	4.008.24.002	Rondella ø8.5x24x2.5 6593	Washer ø8.5x24x2.5 6593	Unterlegscheibe ø8.5x24x2.5 6593	Arandela ø8.5x24x2.5 6593	Rondelle ø8.5x24x2.5 6593
19	3	4.008.54.004	Rondella di sicurezza UNI1751 M8	Safety washer UNI1751 M8	Sicherheits Scheibe UNI1751 M8	Arandela de seguridad UNI1751 M8	Rondelle de sûreté UNI1751 M8
20	1	4.030.04.010	Trasformatore 30mA 230V	Transformer 30mA 230V	Stromwandler 30mA 230V	Transformador 30mA 230V	Transformateur 30mA 230V
21	2	4.034.04.005	Tappo	Cap	Deckel	Tapón	Bouchon
22	1	4.035.02.017	Condensatore 8mf 450V	Condenser 8mf 450V	Kondensator 8mf 450V	Condensador 8mf 450V	Condenseur 8mf 450V

# Electrodes cover W5050

## Coperchio elettrodi W5050

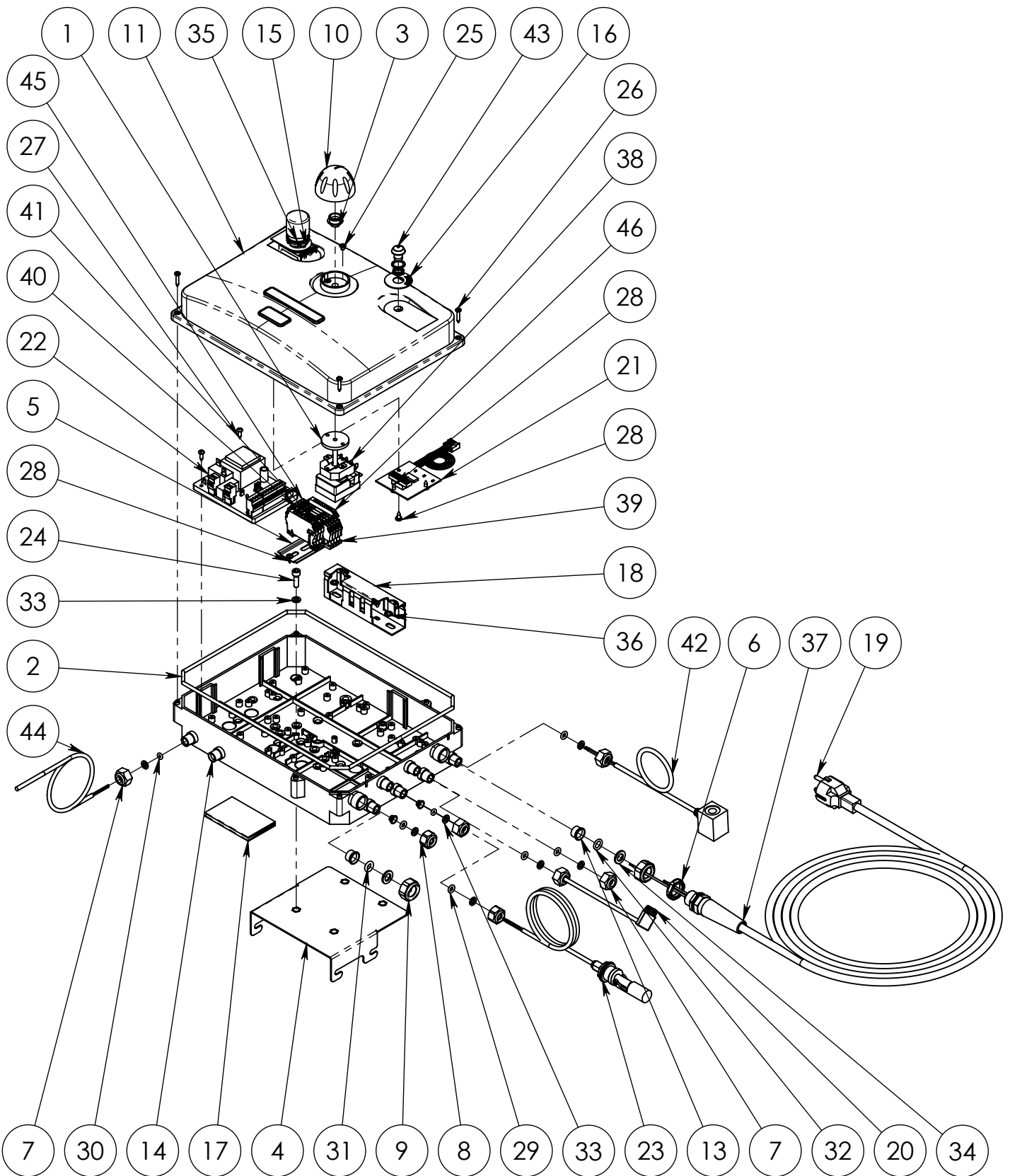


**2.012.04.033.E**

Pos.	Q.Ty	Code	ITALIANO	ENGLISH	DEUTSCH	ESPAÑOL	FRANCAIS
1	1	1.001.04.006	Raccordo 9/19 - G1/8	Connection 9/19 - G1/8	Leiste 9/19 - G1/8	Filete 9/19 - G1/8	Filet 9/19 - G1/8
2	1	1.012.14.012	Tappo G1/8+CONTR.PRESS.M5	Cap G1/8+CONTR.PRESS.M5	Deckel G1/8+CONTR.PRESS.M5	Tapón G1/8+CONTR.PRESS.M5	Bouchon G1/8+CONTR.PRESS.M5
3	1	1.015.24.003	Ghiera	Ferrule	Zwinge	Abrazadera	Embout
4	1	1.015.32.008	Ghiera G1/4"	Ferrule G1/4"	Zwinge G1/4"	Abrazadera G1/4"	Embout G1/4"
5	1	1.074.04.005	Flangia	Flange	Flansch	Borde	Bride
6	1	1.074.04.018	Flangia M15x1.5 (CF)	Flange M15x1.5 (CF)	Flansch M15x1.5 (CF)	Borde M15x1.5 (CF)	Bride M15x1.5 (CF)
7	1	1.102.04.001	Vetrino	Glass	Glass	Vidrio	Vèrre
8	1	1.102.04.003	Vetrino ø19	Glass ø19	Glass ø19	Vidrio ø19	Vèrre ø19
9	1	2.009.04.002	Deflettore Work	Deflector Work	Deflektor Work	Deflector Work	Défecteur Work
10	1	2.032.04.004	Elettrodi	Electrodes	Elektrode	Electrodos	Electrodes
11	1	3.050.34.001	Raccordo	Connection	Leiste	Filete	Filet
12	1	4.002.14.022	Vite M5x10 UNI5931	Screw M5x10 UNI5931	Schrauben M5x10 UNI5931	Tornillo M5x10 UNI5931	Vis M5x10 UNI5931
13	2	4.002.72.001	Vite M5x12 UNI7687	Screw M5x12 UNI7687	Schrauben M5x12 UNI7687	Tornillo M5x12 UNI7687	Vis M5x12 UNI7687
14	2	4.002.94.005	Vite autofilettante 3.9x13	Self-tapping Screw 3.9x13	Gewindeschneidschraube 3.9x13	Tornillo Self-tapping 3.9x13	Vies Autofilettante 3.9x13
15	1	4.005.14.004	OR 0130-1	O-ring 0130-1	O-ring 0130-1	OR 0130-1	Joint torique 0130-1
16	1	4.005.24.013	Guarnizione OR ø4.34X3.53	Gasket OR ø4.34X3.53	Dichtung OR ø4.34X3.53	Guarnición OR ø4.34X3.53	Garniture OR ø4.34X3.53
17	1	4.008.02.001	Rondella 6.4x11x1.6 DIN433 UNI6592 ZEB	Washer 6.4x11x1.6 DIN433 UNI6592 ZEB	Unterlegscheibe 6.4x11x1.6 DIN433 UNI6592 ZEB	Arandela 6.4x11x1.6 DIN433 UNI6592 ZEB	Rondelle 6.4x11x1.6 DIN433 UNI6592 ZEB
18	2	4.008.12.005	Rondella Rame G1/8	Copper washer G1/8	Kupferunterlegsscheibe G1/8	Arandelade cobre G1/8	Rondelle cuivre G1/8
19	1	4.008.14.003	Rondella Rame M5	Copper washer M5	Kupferunterlegsscheibe M5	Arandela de cobre M5	Rondelle cuivre M5
20	1	4.025.04.002	Seeger	Seeger	Seeger	Seeger	Seeger
21	1	4.027.14.012	Ugello 2.25	Nozzle 2.25	Duse 2.25	Boquilla 2.25	Buse 2.25

# Electric pannel 230V

## Quadro elettrico 230V



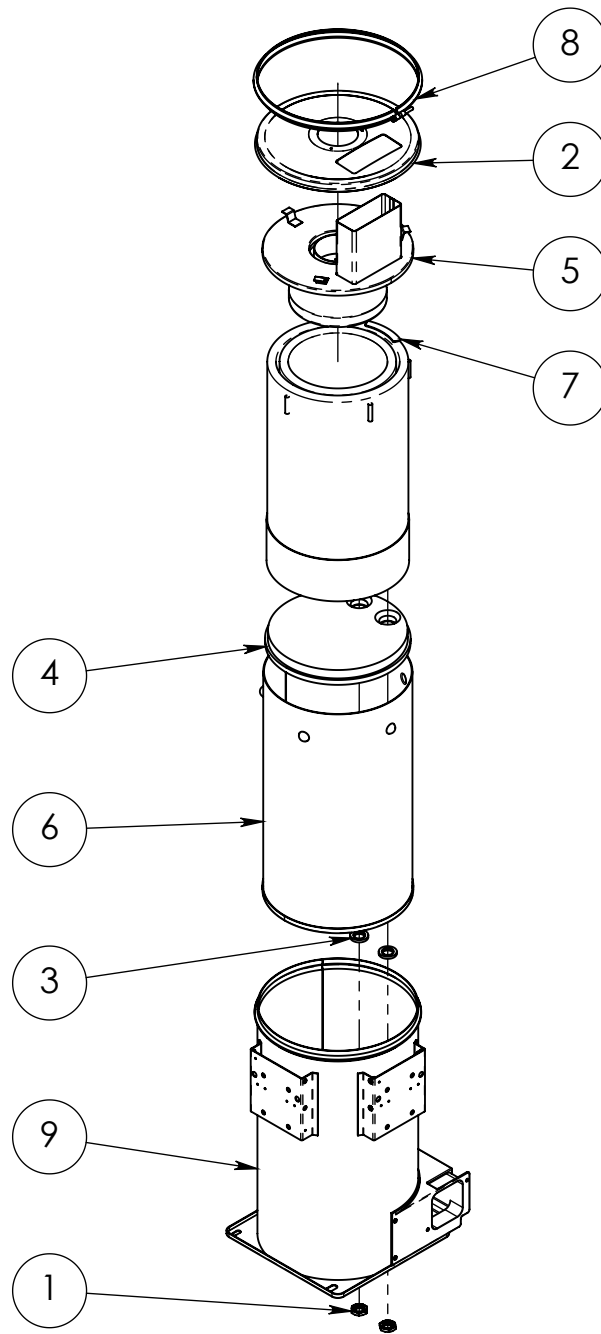
**2.031.04.193.P**



Pos.	Q.Ty	Code	ITALIANO	ENGLISH	DEUTSCH	ESPAÑOL	FRANCAIS
1	1	1.006.14.001	Guarnizione ø36	Gasket ø36	Dichtung ø36	Guarnición ø36	Garniture ø36
2	1	1.006.14.004	Guarnizione ø4x1020	Gasket ø4x1020	Dichtung ø4x1020	Guarnición ø4x1020	Garniture ø4x1020
3	1	1.006.14.012	Guarnizione	Gasket	Verzierung	Guarnición	Garniture
4	1	1.008.04.084	Piastra	Plate	Platte	Placa	Plat
5	1	1.011.04.033	Supporto L 73mm	Support L 73mm	Halter L 73mm	Soporte L 73mm	Support L 73mm
6	1	1.015.04.003	Ghiera Pg13.5	Ferrule Pg13.5	Zwinge Pg13.5	Abrazadera Pg13.5	Embout Pg13.5
7	5	1.015.32.008	Ghiera G1/4"	Ferrule G1/4"	Zwinge G1/4"	Abrazadera G1/4"	Embout G1/4"
8	2	1.015.32.008	Ghiera G1/4"	Ferrule G1/4"	Zwinge G1/4"	Abrazadera G1/4"	Embout G1/4"
9	2	1.015.32.015	Ghiera 1/2 G-F Pl. 15	Ferrule 1/2 G-F Pl. 15	Zwinge 1/2 G-F Pl. 15	Abrazadera 1/2 G-F Pl. 15	Embout 1/2 G-F Pl. 15
10	1	1.021.04.006	Manopla	Knob	Griff	Pomo	Poignée
11	1	1.054.04.055	Coperchio scatola elettrica	Electrical box cover	Elektro-Deckel	Cubierta de la caja eléctrica	Couverture de boîte électrique
12	2	1.064.04.010	Boccola	Bushing	Buchse	Buje	Boucle
13	2	1.064.04.024	Pressacavo ø12	Cable clamping ø12	Kabelklemme ø12	Prensacables ø12	Serre-câble ø12
14	1	1.078.04.050	Scatola	Box	Kasten	Caja	Boite
15	1	1.087.04.301	Etichetta	Label	Etikett	Etiqueta	Étiquette
16	1	1.087.04.303	Etichetta reset	Label reset	Etikett reset	Etiqueta reset	Étiquette reset
17	1	1.093.04.149	Schema elettrico	electric diagram	elektrisches Schema	electric diagram	schéma électrique
18	1	1.110.04.003	Canaletta T1 25x40 G L140	Groove T1 25x40 G L140	Nut T1 25x40 G L140	Surco T1 25x40 G L140	Cannelure T1 25x40 G L140
19	1	2.020.04.004	Cavo elettrico S1.5x3 6M	Power cable S1.5x3 6M	Energie kabel S1.5x3 6M	Cable electrico S1.5x3 6M	Cable électrique S1.5x3 6M
20	1	2.020.04.093	Cavo elettrico WSF3025	Power cable WSF3025	Energie kabel WSF3025	Cable electrico WSF3025	Cable électrique WSF3025
21	1	3.024.02.038	Scheda led 12-24-220-400V	Board led 12-24V	Karte led 12-24V	Tarjeta led 12-24V	Carte led 12-24V
22	1	3.024.02.053	Scheda elettronica MCC-B (220V)	Electronic Board MCC-B (220V)	ElektronischeKarte MCC-B (220V)	Tarjeta electrónico MCC-B (220V)	Carte électronique MCC-B (220V)
23	1	3.030.02.007	Livellostato	Leveller	Wasser Niveau	Nivelador	Niveleur
24	4	4.002.14.020	Vite M6x20 UNI5931	Screw M6x20 UNI5931	Schrauben M6x20 UNI5931	Tornillo M6x20 UNI5931	Vis M6x20 UNI5931
25	2	4.002.72.009	Vite TC M4x6	Screw TC M4x6	Schrauben TC M4x6	Tornillo TC M4x6	Vis TC M4x6
26	4	4.002.92.001	Vite autofilettante 3.5x19	Self-tapping Screw 3.5x19	Selbschneidendeschraube 3.5x19	Tornillo autoblocante 3.5x19	Vis autofiletant 3.5x19
27	2	4.002.94.005	Vite autofilettante 3.9x13	Self-tapping Screw 3.9x13	Gewindeschneidschraube 3.9x13	Tornillo Self-tapping 3.9x13	Vies Autofiletante 3.9x13
28	4	4.002.94.015	Vite autofilettante 3.9x9.5	Self-tapping Screw 3.9x9.5	Selbschneidendeschraube 3.9x9.5	Tornillo autoblocante 3.9x9.5	Vis autofiletant 3.9x9.5
29	5	4.005.22.009	OR 3024	O-ring 3024	O-ring 3024	OR 3024	Joint torique 3024
30	2	4.005.22.012	OR 2-105	O-ring 2-105	O-ring 2-105	OR 2-105	Joint torique 2-105
31	1	4.005.22.028	OR 0080-35	O-ring 0080-35	O-ring 0080-35	OR 0080-35	Joint torique ORM 0080-35
32	1	4.005.24.001	OR 112	O-ring 112	O-Ring 112	OR 112	Joint torique 112
33	11	4.008.02.001	Rondella 6.4x11x1.6 DIN433 UNI6592 ZEB	Washer 6.4x11x1.6 DIN433 UNI6592 ZEB	Unterlegscheibe 6.4x11x1.6 DIN433 UNI6592 ZEB	Arandela 6.4x11x1.6 DIN433 UNI6592 ZEB	Rondelle 6.4x11x1.6 DIN433 UNI6592 ZEB
34	2	4.008.04.012	Rondella M10 10.5x18x2	Washer M10 10.5x18x2	Unterlegscheibe M10 10.5x18x2	Arandela M10 10.5x18x2	Rondelle M10 10.5x18x2
35	1	4.018.04.020	Interruttore	Switch	Schalter	Interruptor	Interrupteur
36	2	4.025.04.008	Seeger KS 6	Seeger KS 6	Seeger KS 6	Seeger KS 6	Seeger KS 6
37	1	4.026.02.001	Pressacavo PG 13.5	Cable clamping PG 13.5	Kabelklemme PG 13.5	Prensacables PG 13.5	Serre-câble PG 13.5
38	1	4.031.04.003	Termostato 30°-150°	Thermostat 30°-150°	Thermostat 30°-150°	Termostato 30°-150°	Thermostat 30°-150°
39	1	4.033.04.038	Morsettiere 2.5/4 ZPE 160866	Terminal Block 2.5/4 ZPE 160866	Klemmleisten 2.5/4 ZPE 160866	Tableros de bornes 2.5/4 ZPE 160866	Plaques à bornes 2.5/4 ZPE 160866
40	3	4.033.04.039	Morsetto	Clamp	Klemme	Prensita de sujeción	Colier de serrage
41	2	4.033.04.040	Morsetto	Clamp	Klemme	Prensita de sujeción	Colier de serrage
42	1	4.040.04.001	Bobina	Solenoid	Bandspule	Bobina	Bobine
43	1	4.053.04.005	Pulsante Reset (L=400mm) + Plug	Button Reset (L=400mm) + Plug	Drucktaste Reset (L=400mm) + Plug	Pulsante Reset (L=400mm) + Plug	Bouton Reset (L=400mm) + Plug
44	1	4.069.04.002	Sonda controllo fiamma	Flame control probe	Flamme-Sonde	Sensor de llama	sonde de contrôle de flamme
45	1	4.093.04.002	Terminale ZAP/TW3 N160880	Terminal ZAP/TW3 N160880	Schuh ZAP/TW3 N160880	Terminal ZAP/TW3 N160880	Boites d'extrémité ZAP/TW3 N160880
46	2	4.093.04.004	Morsetto	Clamp	Klemme	Prensita de sujeción	Colier de serrage

# Preassembled Boiler 25L 350BAR

## Premontato Caldaia 25L 350BAR

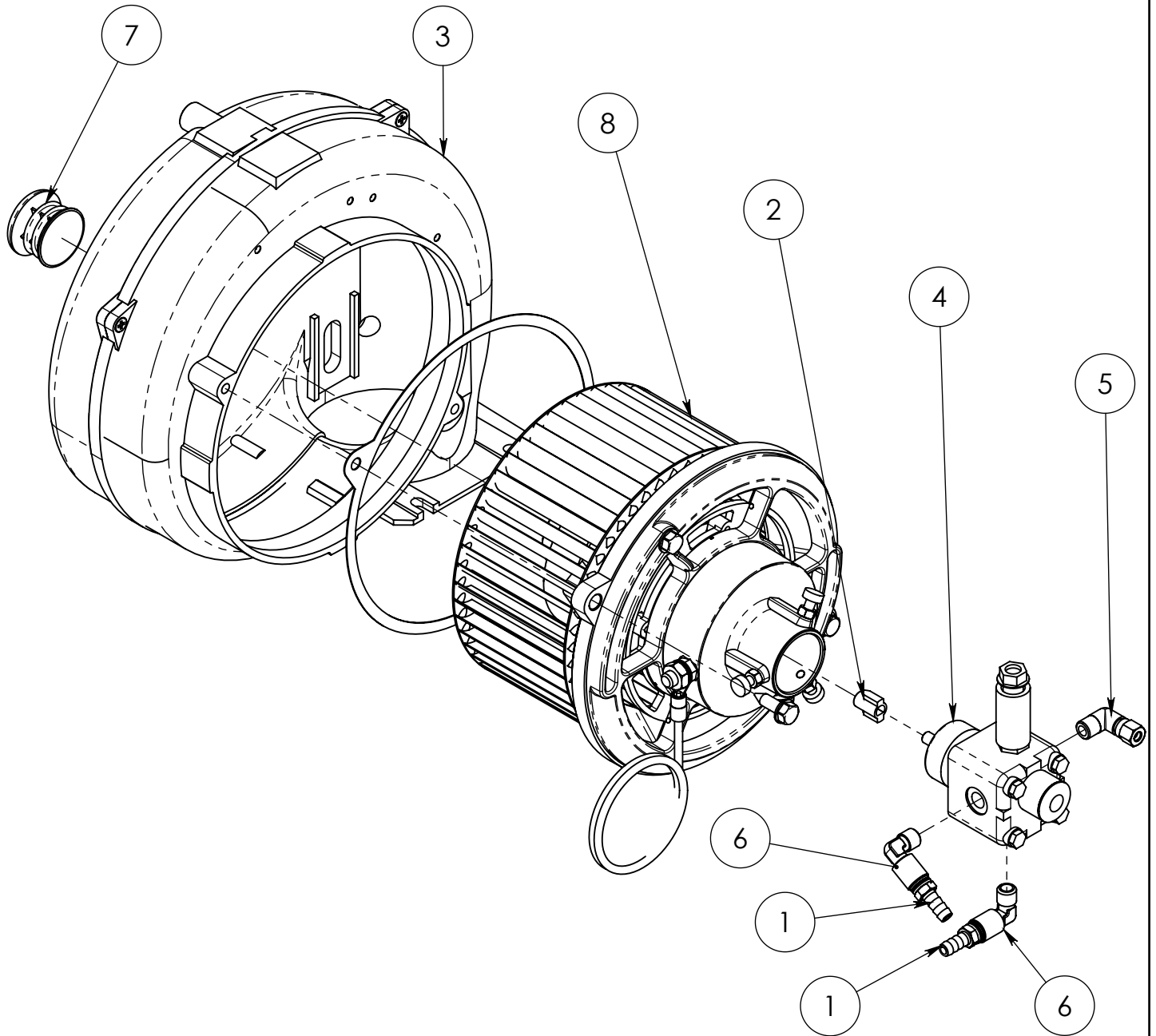


**2.041.04.034.A**

Pos.	Q.Ty	Code	ITALIANO	ENGLISH	DEUTSCH	ESPAÑOL	FRANCAIS
1	2	1.015.24.002	Ghiera 1/2"G	Ferrule 1/2"G	Zwinge 1/2"G	Abrazadera 1/2"G	Embout 1/2"G
2	1	1.054.04.006	Coperchio	Cover	Deckel	Tapa	Couvercle
3	2	1.060.04.018	Distanziale	Spacer	Distanzstueck	Distanciador	Entretoise
4	1	1.094.04.005	Isolante termico 20-25L	Thermal insulator 20-25L	Waermeschutzstoff 20-25L	Aislador termal 20-25L	Isolateur termique 20-25L
5	1	2.012.04.013	Coperchio W 20L	Cover W 20L	Deckel W 20L	Tapa W 20L	Couvercle W 20L
6	1	2.023.04.010	Camicia interna 25L	Internal jacket 25L	Innerer Mantel 25L	Camisa interior 25L	Chemise interne 25L
7	1	2.029.02.001	Serpentina 25Lit 400Bar 3/8"M-M	Coil 25Lit 400Bar 3/8"M-M	Schlange 25Lit 400Bar 3/8"M-M	Serpentin 25Lit 400Bar 3/8"M-M	Serpentin 25Lit 400Bar 3/8"M-M
8	1	2.056.04.001	Fascetta ø317	Clamp ø317	Klemme ø317	Faja ø317	Petit bande ø317
9	1	2.111.04.004	Camicia esterna WSF5050	External jacket WSF5050	Äusserer Mantel WSF5050	Camisa externa WSF5050	Chemise externe WSF5050

# Conveyor 230V 50/60Hz

## Convogliatore 230V 50/60Hz



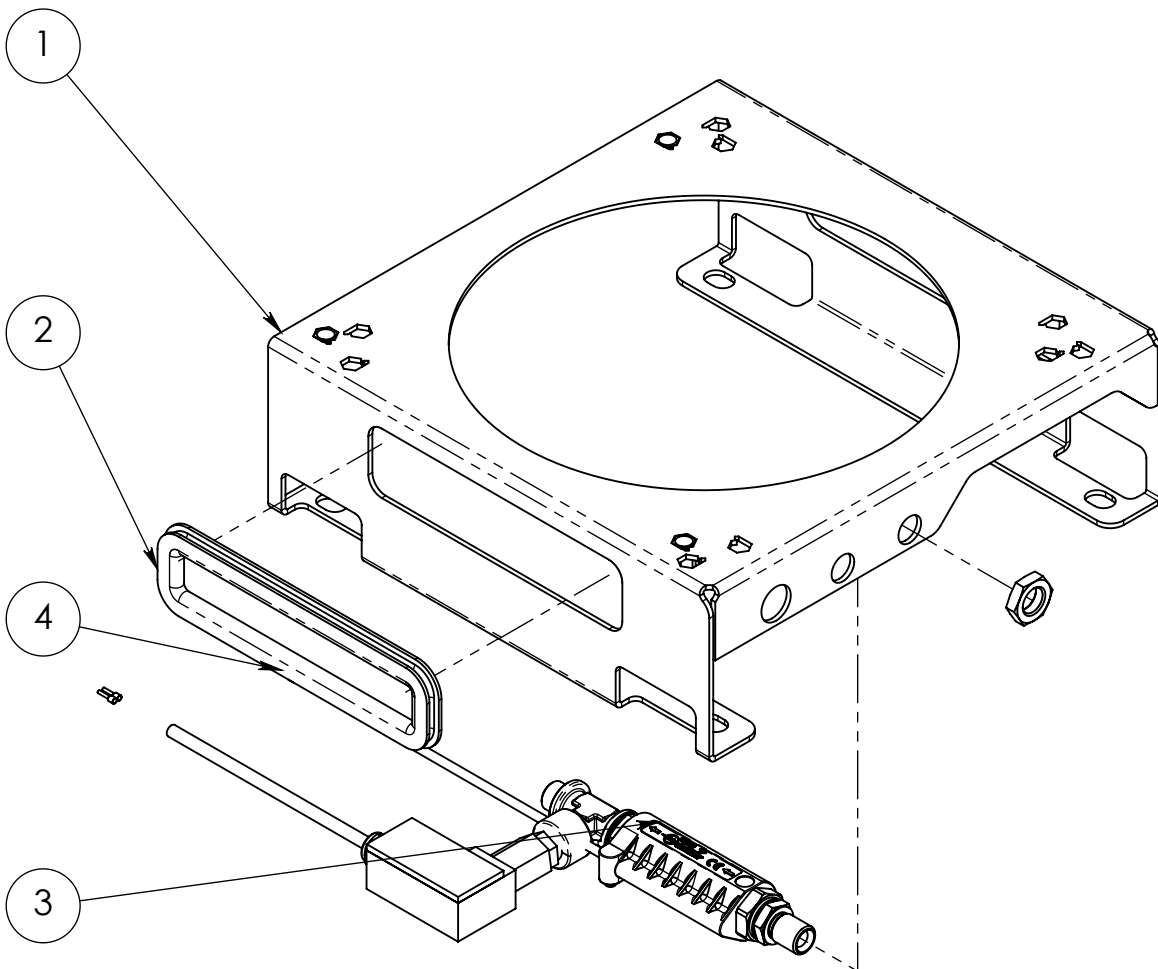
**KIT CONVEYOR MOTOR REPLACEMENT: 9.014.02.008**

**3.038.02.011.K**

Pos.	Q.tà	Cod.	ITALIANO	ENGLISH	DEUTSCH	ESPAÑOL	FRANCAIS
1	2	1.005.04.002	Innesto rapido	Quick coupling	Schnelle kupplung	Enchufe rapido	Raccord rapid
2	1	1.098.02.001	Giunto DX	Coupling DX	Kupplung DX	Acoplamiento DX	Accouplement DX
3	1	2.017.22.002	Carter 5050	Guard 5050	Gehäuse 5050	Càrter 5050	Carter 5050
4	1	3.015.24.007	Pompa DX	Pump DX	Pump DX	Bomba DX	Pompe DX
5	1	3.050.14.001	Raccordo	Connection	Leiste	Filete	Filet
6	2	4.012.04.013	Raccordo a L G1/4	L Connection G1/4	Leiste L G1/4	Filete L G1/4	Filet L G1/4
7	1	4.036.02.002	Tappo ø32	Plug ø32	Deckel ø32	Tapón ø32	Bouchon ø32
8	1	9.014.02.008	Ricambio Motore Elettrico 220VMF2P DX	Electric Motor Spare part 220VMF2P DX	ElektromotorErsatzteil 220VMF2P DX	Motor Eléctrico de repuesto 220VMF2P DX	Moteur électrique de rechange 220VMF2P DX

# Support 15/25L - 350Bar Bioler

## Supporto 15/25L - 350BarCaldaia

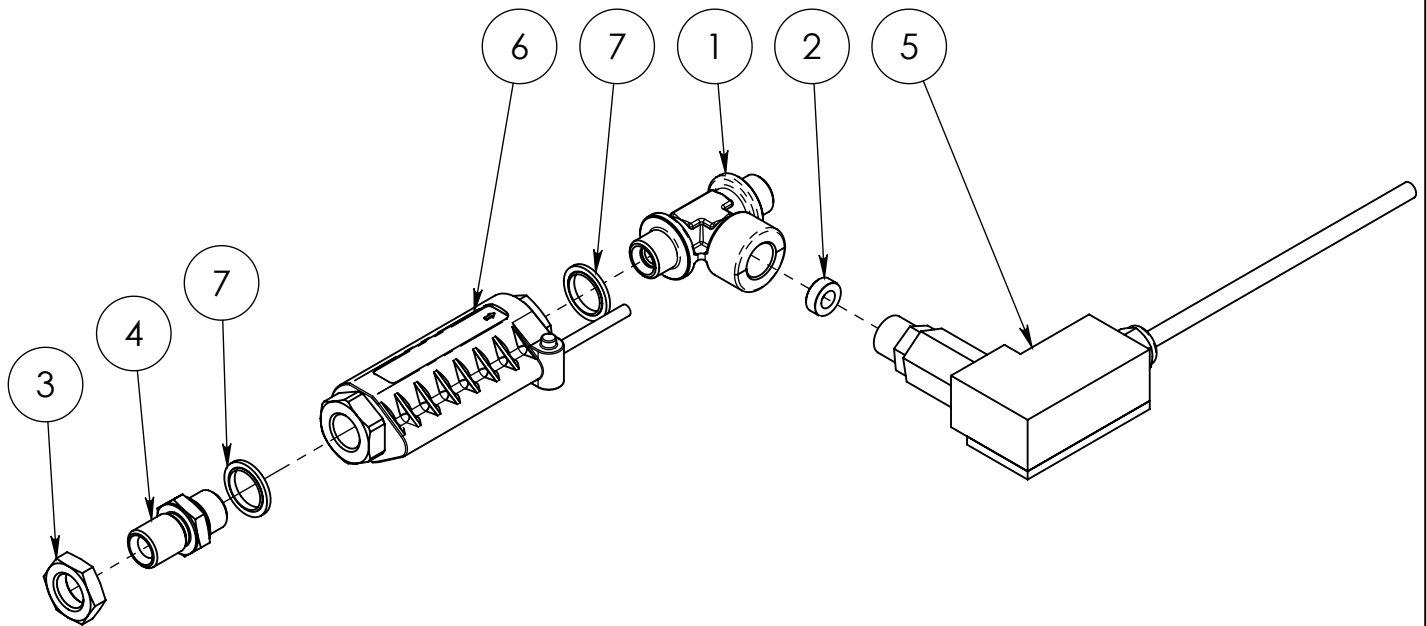


**2.024.02.004 .C**

Pos.	Q.Ty	Code	ITALIANO	ENGLISH	DEUTSCH	ESPAÑOL	FRANCAIS
1	1	1.011.02.009	Supporto	Support	Halter	Soporte	Support
2	1	1.046.04.032	Protezione	Protection	Schutz	Protección	Protection
3	1	2.086.02.002	Flussostato 350BAR	Flow switch 350BAR	Stromschalter 350BAR	Flusostato 350BAR	Flussostat 350BAR
4	4	4.024.14.002	Terminale (di cavo) 1mmq PKC108	Terminal 1mmq PKC108	Schuh 1mmq PKC108	Terminal 1mmq PKC108	Boites d'extrémité 1mmq PKC108

# Flow switch 350BAR

## Flussostato 350BAR

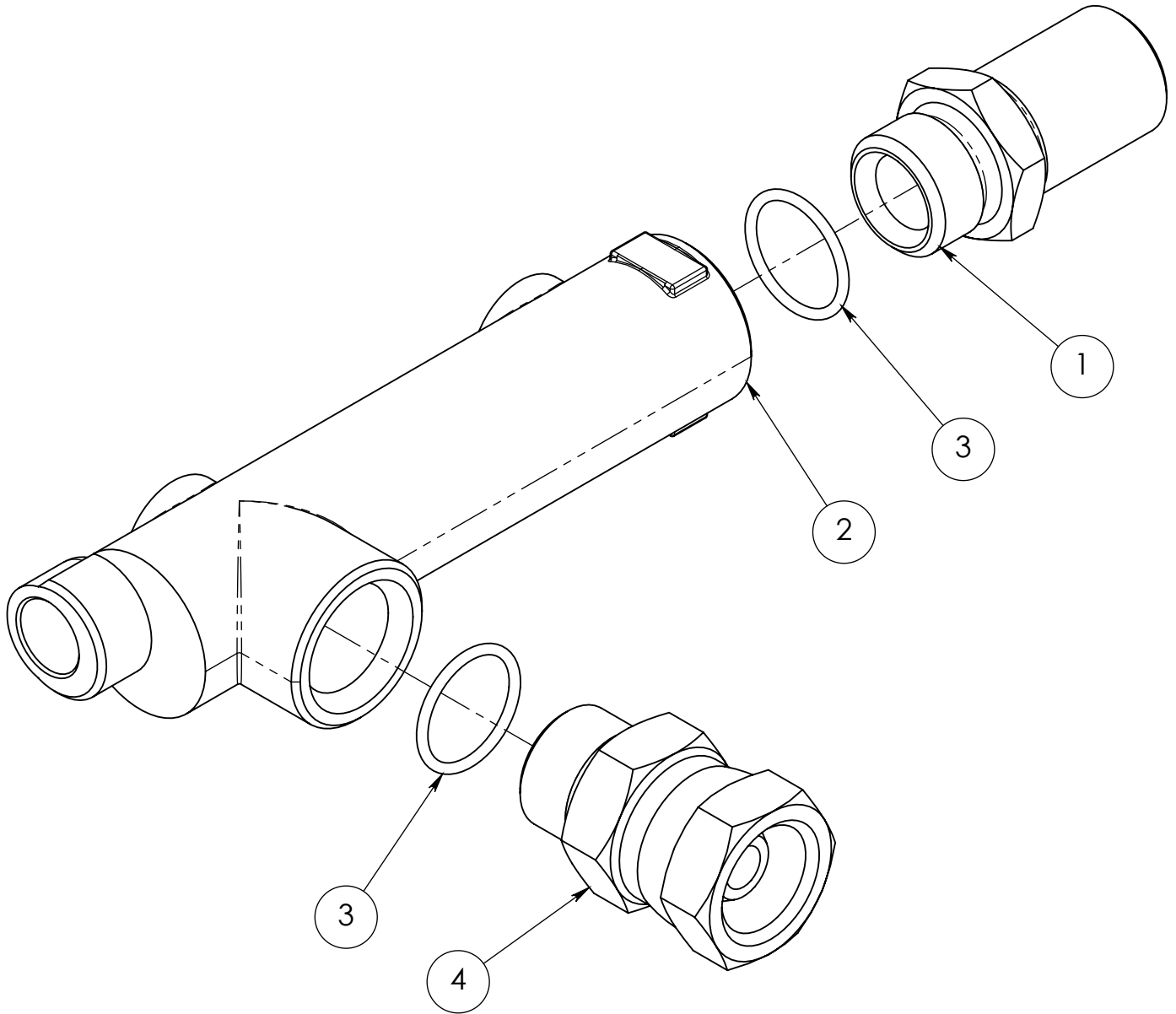


**2.086.02.002.C**

Pos.	Q.Ty	Code	ITALIANO	ENGLISH	DEUTSCH	ESPAÑOL	FRANCAIS
1	1	1.001.24.023	Raccordo a T G3/8 M -M-F	T Connection G3/8 M -M-F	Leiste T G3/8 M -M-F	Filete T G3/8 M -M-F	Filet T G3/8 M -M-F
2	1	1.006.22.001	Guarnizione ø14.7xø7.7x5.3	Gasket ø14.7xø7.7x5.3	Dichtung ø14.7xø7.7x5.3	Guarnición ø14.7xø7.7x5.3	Garniture ø14.7xø7.7x5.3
3	1	1.015.04.012	Ghiera G3/8	Ferrule G3/8	Zwinge G3/8	Abrazadera G3/8	Embout G3/8
4	1	1.096.04.010	Niples G3/8 MM	Niplex G3/8 MM	Nipplen G3/8 MM	Niplo G3/8 MM	Nipples G3/8 MM
5	1	3.013.04.011	Pressostato 3/8"Gas max 600Bar INOX	pressure gauge 3/8"Gas max 600Bar INOX	Druckschalter 3/8"Gas max 600Bar INOX	Presostato 3/8"Gas max 600Bar INOX	Pressostat 3/8"Gas max 600Bar INOX
6	1	3.054.04.008	Flussostato 3/8"FF (60L/min.) 39MPa (80°C)	Flow switch 3/8"FF (60L/min.) 39MPa (80°C)	Stromschalter 3/8"FF (60L/min.) 39MPa (80°C)	Flusostato 3/8"FF (60L/min.) 39MPa (80°C)	Flussostat 3/8"FF (60L/min.) 39MPa (80°C)
7	2	4.070.04.001	Guarnizione G3/8	Gasket G3/8	Dichtung G3/8	Guarnición G3/8	Garniture G3/8

# Collector 350BAR FIREBOX

## Collettore 350BAR FIREBOX



**2.048.04.023 .G**

Pos.	Q.Ty	Code	ITALIANO	ENGLISH	DEUTSCH	ESPAÑOL	FRANCAIS
1	1	1.001.04.030	Raccordo M22x1.5M-G1/2M	Connection M22x1.5M-G1/2M	Leiste M22x1.5M-G1/2M	Filete M22x1.5M-G1/2M	Filet M22x1.5M-G1/2M
2	1	1.042.24.007	Collettore 500 BAR	Collector 500 BAR	Kollektor 500 BAR	Colector 500 BAR	Collecteur 500 BAR
3	2	4.005.14.002	OR 2075	O-ring 2075	O-ring 2075	OR 2075	Joint torique 2075
4	1	4.012.04.003	Raccordo G1/2 MF	Connection G1/2 MF	Leiste G1/2 MF	Filete G1/2 MF	Filet G1/2 MF