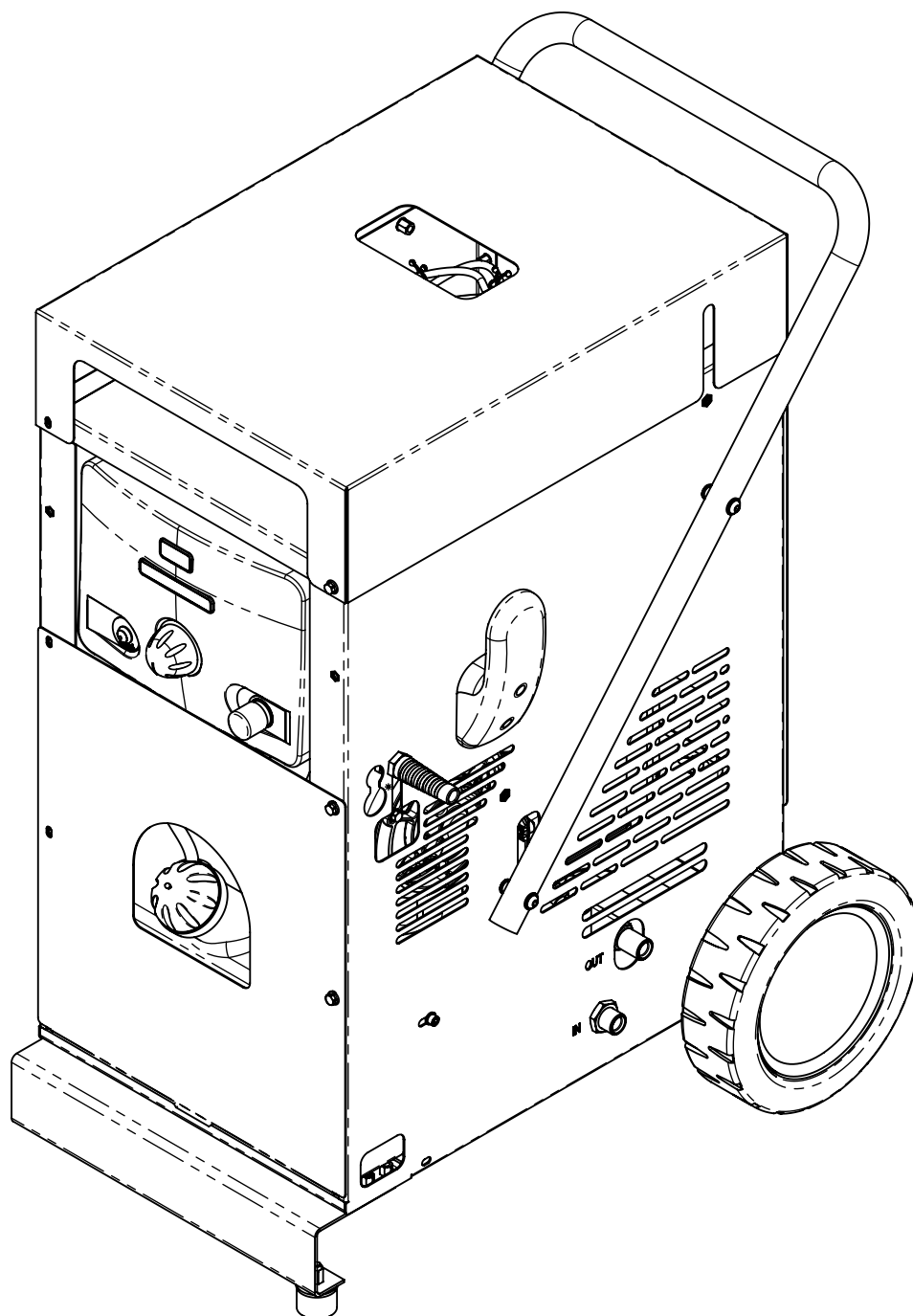


FireBox MC15 12V



General table

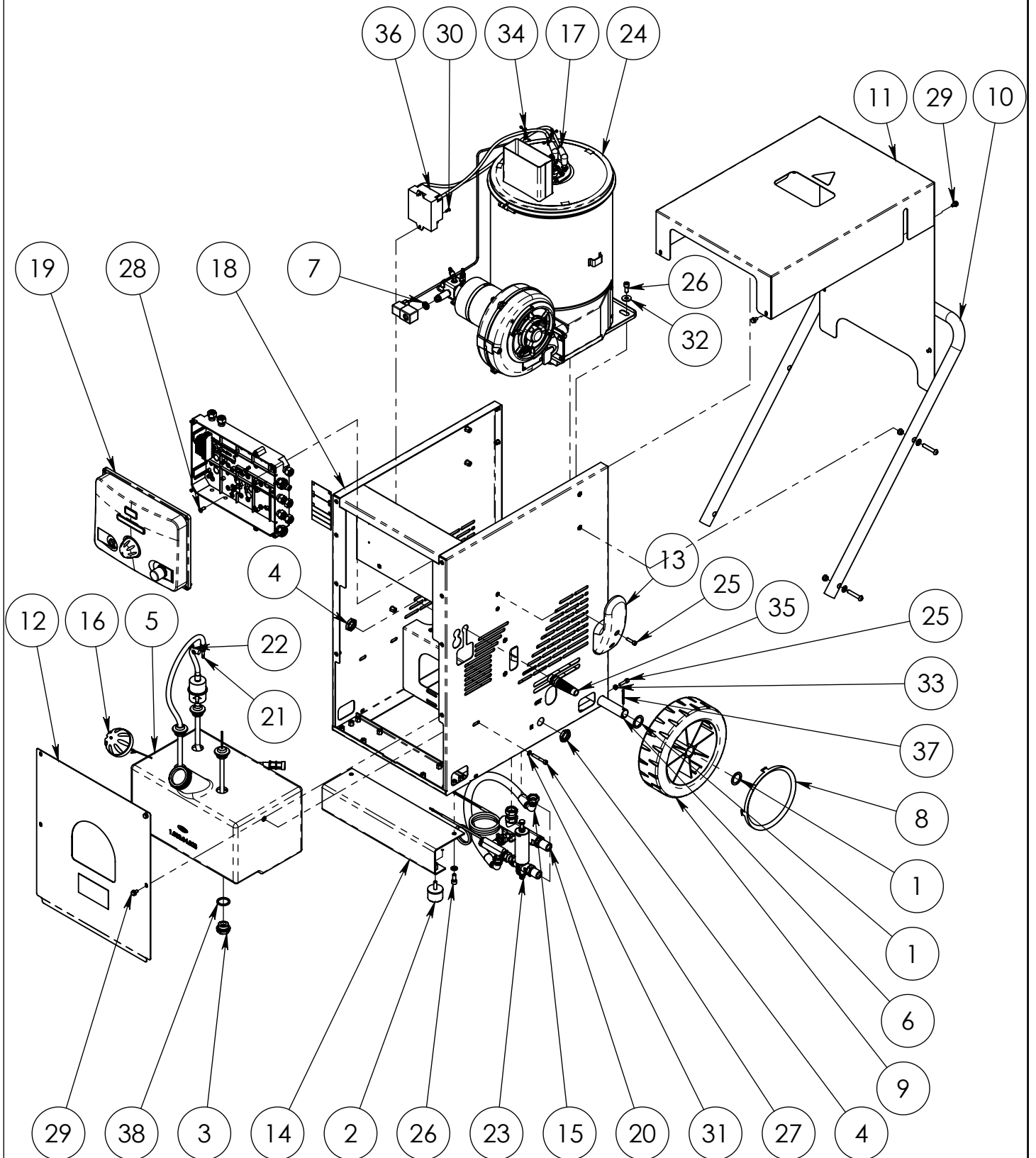
Code	Flow Rate (Lt/min)	Pressure (Bar)	Fuel tank (Lt)	Power Supply (Volt)	In-Out	KW	Kcal/h	Lt/h
3.064.04.002	15	250	16	12 DC	M22x1.5	53.5	46.000	4.73

General table

Coil		
m	Thickness	Ø
24	2.1	3/8"

Exploded FireBox

Esploso FireBox



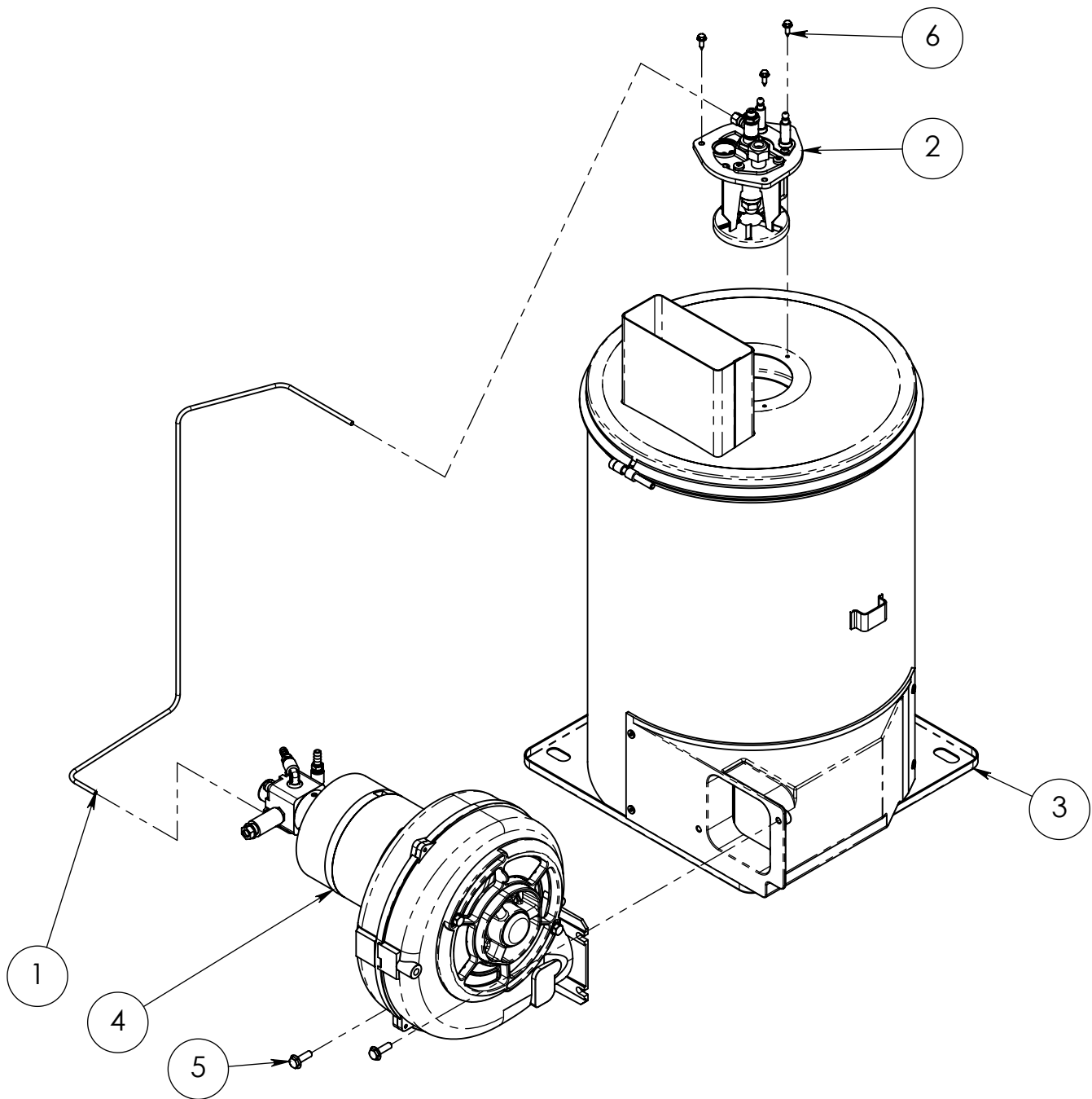
3.064.04.009.E



Pos.	Q.Ty	Code	ITALIANO	ENGLISH	DEUTSCH	ESPAÑOL	FRANCAIS
1	4	1.003.04.006	Rondella ø25.5xø35x2	Washer 25.5x35x2	Unterlegscheibe 25.5x35x2	Arandela 25.5x35x2	Rondelle 25.5x35x2
2	2	1.011.04.018	Supporto	Support	Halter	Soporte	Support
3	1	1.012.14.025	Tappo G3/4	Cap G3/4	Deckel G3/4	Tapón G3/4	Bouchon G3/4
4	2	1.015.04.009	Ghiera M22	Ferrule M22	Zwinge M22	Abrazadera M22	Embout M22
5	1	1.033.04.028	Serbatoio FireBox	Tank FireBox	Tank FireBox	Tanque FireBox	Reservoir FireBox
6	1	1.044.24.084	Tubo	Pipe	Rohr	Tubo	Tuyau
7	1	1.060.02.017	Distanziale	Spacer	Distanzstueck	Distanciador	Entretoise
8	2	1.085.04.015	Coprizzo	Hub Cap	Nabe Haus	Casquillo del cubo	Enjoliveur de roue
9	2	1.086.04.018	Ruota ø260 - ø25	Wheel ø260 - ø25	Rad ø260 - ø25	Rueda ø260 - ø25	Roue ø260 - ø25
10	1	1.095.04.010	Manico	Handle	Griff	Manija	Manche
11	1	1.125.04.005	Scocca inox	Stainless steel Cover	Edelstahle Abdeckung	Tapa inox	Copot inox
12	1	1.125.04.006	Pannello Anteriore	Front panel	Front-Panel	Panel frontal	Panneau avant
13	1	1.126.04.001	Gancio	Hook	Haken	Gancho	Crochet
14	1	1.145.04.011	Piede	Foot	Fuß	Pie	Pied
15	1	2.006.24.080	Tubo 400Bar R2 L600	Pipe 400Bar R2 L600	Rohr 400Bar R2 L600	Tubo 400Bar R2 L600	Tuyau 400Bar R2 L600
16	1	2.013.04.023	Tappo rosso	Red cap	Rote Kappe	Casquillo Rojo	Couvercle rouge
17	2	2.020.04.035	Cavo L=600	Cable L=600	Kabel L=600	Cable L=600	Cable L=600
18	1	2.022.04.013	Basamento	Plinth	Fundament	Zócalo	Embasement
19	1	2.031.04.189	Quadro elettrico 12V 50Hz FIREBOX	Electric pannel 12V 50Hz FIREBOX	Schalttafel 12V 50Hz FIREBOX	Cuadro eléctrico 12V 50Hz FIREBOX	Panneu électrique 12V 50Hz FIREBOX
20	1	2.048.04.018	Collettore 250BAR FIREBOX	Collector 250BAR FIREBOX	Kollektor 250BAR FIREBOX	Colector 250BAR FIREBOX	Collecteur 250BAR FIREBOX
21	1	2.074.04.068	Tubo by-pass MC	by-pass Pipe MC	by-passRohr MC	Tubo by-pass MC	Tuyau by-pass MC
22	1	2.074.04.070	Tubo aspirazione gasolio FIREBOX	Gas oil suction pipe FIREBOX	Saugrohr gas oel FIREBOX	Tubo de aspiración gasoleo FIREBOX	Tube d'aspiration gas oil FIREBOX
23	1	2.100.04.016	Gruppo valvola 250BAR	Valves Group 250BAR	Ventil Gruppe 250BAR	Groupe Vannes 250BAR	Grupo Valvulas 250BAR
24	1	3.026.04.056	Caldaia 15L/min 12V FIREBOX	Boiler 15L/min 12V FIREBOX	Kessel 15L/min 12V FIREBOX	Caldera 15L/min 12V FIREBOX	Chaudière 15L/min 12V FIREBOX
25	4	4.002.12.008	Vite M6x25 UNI5931	Screw M6x25 UNI5931	Schrauben M6x25 UNI5931	Tornillo M6x25 UNI5931	Vis M6x25 UNI5931
26	5	4.002.14.005	Vite M8x20 UNI5931	Screw M8x20 UNI5931	Schrauben M8x20 UNI5931	Tornillo M8x20 UNI5931	Vis M8x20 UNI5931
27	2	4.002.14.043	Vite TCEI M6x45 UNI5931 ZEB	Screw TCEI M6x45 UNI5931 ZEB	Schrauben TCEI M6x45 UNI5931 ZEB	Tornillo TCEI M6x45 UNI5931 ZEB	Vis TCEI M6x45 UNI5931 ZEB
28	4	4.002.24.003	Vite M6x16 UNI5933	Screw M6x16 UNI5933	Schrauben M6x16 UNI5933	Tornillo M6x16 UNI5933	Vis M6x16 UNI5933
29	10	4.002.41.001	Vite M6X10 DIN6921	Screw M6X10 DIN6921	Schrauben M6X10 DIN6921	Tornillo M6X10 DIN6921	Vis M6X10 DIN6921
30	2	4.002.94.005	Vite autofilettante 3.9x13	Self-tapping Screw 3.9x13	Gewindeschneidschraube 3.9x13	Tornillo Self-tapping 3.9x13	Vies Autofilettante 3.9x13
31	2	4.008.02.004	Rondella 12.5x6.3 x1.6	Washer 12.5x6.3 x1.6	Unterlegscheibe 12.5x6.3 x1.6	Arandela 12.5x6.3 x1.6	Rondelle 12.5x6.3 x1.6
32	3	4.008.24.002	Rondella ø8.5x24x2.5 6593	Washer ø8.5x24x2.5 6593	Unterlegscheibe ø8.5x24x2.5 6593	Arandela ø8.5x24x2.5 6593	Rondelle ø8.5x24x2.5 6593
33	2	4.009.04.001	Dado M6 UNI5588	Nut M6 UNI5588-65	MutterM6 UNI5588	Dado M6 UNI5588	Ecrou M6 UNI5588
34	2	4.022.04.016	Fascetta 2x ø5.1/ø7.6	Clamp 2x ø5.1/ø7.6	Klemme 2x ø5.1/ø7.6	Faja 2x ø5.1/ø7.6	Petit bande 2x ø5.1/ø7.6
35	1	4.026.02.001	Pressacavo PG 13.5	Cable clamping PG 13.5	Kabelklemme PG 13.5	Prensacables PG 13.5	Serre-câble PG 13.5
36	1	4.030.04.007	Trasformatore 12V	Transformer 12V	Stromwandler 12V	Transformador 12V	Transformateur 12V
37	2	4.044.04.004	Copiglia ø3.2x36 UNI1336	Spit-pin ø3.2x36 UNI1336	Splint ø3.2x36 UNI1336	Chaveta ø3.2x36 UNI1336	Goupille ø3.2x36 UNI1336
38	1	4.070.04.003	Guarnizione 3/4	Gasket G3/4	Dichtung G3/4	Guarnición G3/4	Garniture G3/4

Boiler 15L/min 12V FIREBOX

Caldaia 15L/min 12V FIREBOX

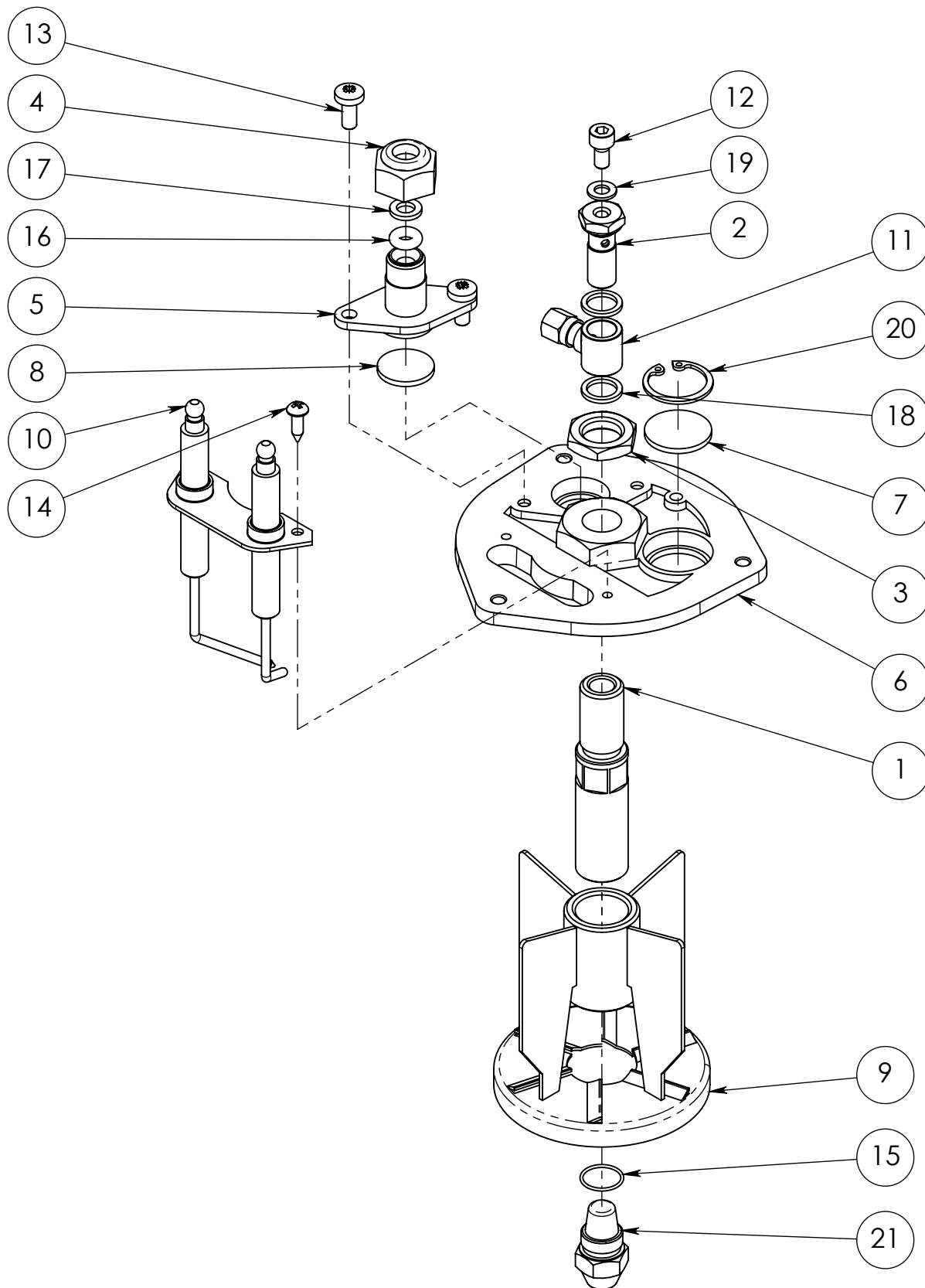


3.026.04.056.C

Pos.	Q.Ty	Code	ITALIANO	ENGLISH	DEUTSCH	ESPAÑOL	FRANCAIS
1	1	1.044.54.018	Tubo di rame	Branch tube	Niederlassung Schlauch	Tubo del rama	Tube de cuivre
2	1	2.012.04.029	Coperchio elettrodi PH3025/3040	Electrodes cover PH3025/3040	Elektrodendeckel PH3025/3040	Tapòn electrodos PH3025/3040	Coouvercle électrodes PH3025/3040
3	1	2.041.04.021	Caldaia 15L	Boiler 15L	Kessel 15L	Caldera 15L	Chaudière 15L
4	1	3.038.02.018	Convogliatore 12V 50Hz	Conveyor 12V 50Hz	Foerderer 12V 50Hz	Convoyador 12V 50Hz	Convoyeur 12V 50Hz
5	2	4.002.92.011	Vite M6x20 UNI 8111	Screw M6x20 UNI 8111	Schrauben M6x20 UNI 8111	Tornillo M6x20 UNI 8111	Vis M6x20 UNI 8111
6	3	4.002.94.017	Vite autofilettante 3.9x13	Self-tapping Screw 3.9x13	Selbschneidendeschraube 3.9x13	Tornillo autoblocante 3.9x13	Vis autofiletant 3.9x13

Electrodes cover PH3025/3040

Coperchio elettrodi PH3025/3040



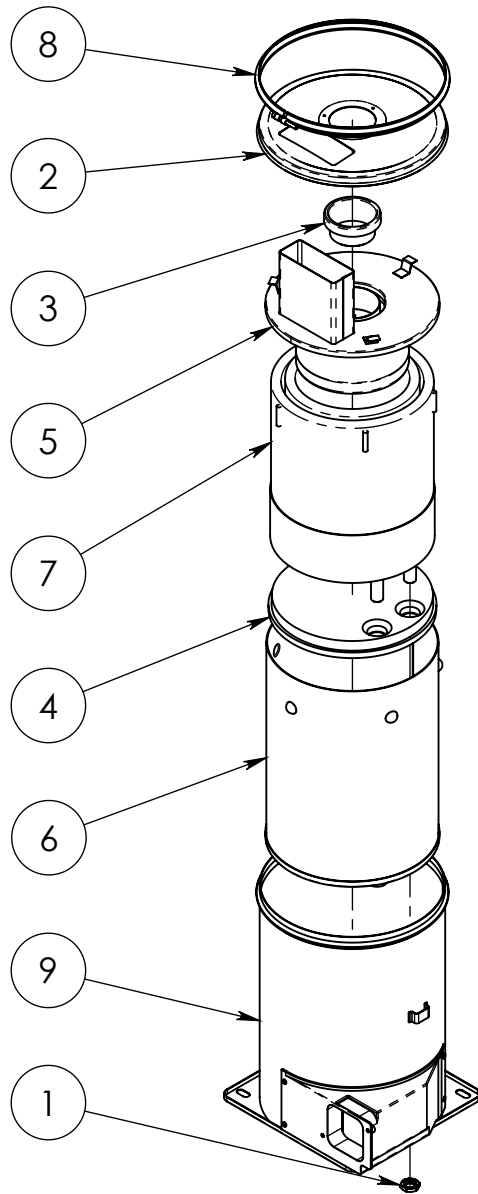
2.012.04.029.D



Pos.	Q.Ty	Code	ITALIANO	ENGLISH	DEUTSCH	ESPAÑOL	FRANCAIS
1	1	1.001.04.006	Raccordo 9/19 - G1/8	Connection 9/19 - G1/8	Leiste 9/19 - G1/8	Filete 9/19 - G1/8	Filet 9/19 - G1/8
2	1	1.012.14.012	Tappo G1/8+CONTR.PRESS.M5	Cap G1/8+CONTR.PRESS.M5	Deckel G1/8+CONTR.PRESS.M5	Tapón G1/8+CONTR.PRESS.M5	Bouchon G1/8+CONTR.PRESS.M5
3	1	1.015.24.003	Ghiera	Ferrule	Zwinge	Abrazadera	Embout
4	1	1.015.32.008	Ghiera G1/4"	Ferrule G1/4"	Zwinge G1/4"	Abrazadera G1/4"	Embout G1/4"
5	1	1.074.04.005	Flangia	Flange	Flansch	Borde	Bride
6	1	1.074.04.018	Flangia M15x1.5 (CF)	Flange M15x1.5 (CF)	Flansch M15x1.5 (CF)	Borde M15x1.5 (CF)	Bride M15x1.5 (CF)
7	1	1.102.04.001	Vetrino	Glass	Glass	Vidrio	Vèrre
8	1	1.102.04.003	Vetrino ø19	Glass ø19	Glass ø19	Vidrio ø19	Vèrre ø19
9	1	2.009.04.002	Deflettore Work	Deflector Work	Deflektor Work	Deflector Work	Défecteur Work
10	1	2.032.04.004	Elettrodi	Electrodes	Elektrode	Electrodos	Electrodes
11	1	3.050.34.001	Raccordo	Connection	Leiste	Filete	Filet
12	1	4.002.14.022	Vite M5x10 UNI5931	Screw M5x10 UNI5931	Schrauben M5x10 UNI5931	Tornillo M5x10 UNI5931	Vis M5x10 UNI5931
13	2	4.002.72.001	Vite M5x12 UNI7687	Screw M5x12 UNI7687	Schrauben M5x12 UNI7687	Tornillo M5x12 UNI7687	Vis M5x12 UNI7687
14	2	4.002.94.005	Vite autofilettante 3.9x13	Self-tapping Screw 3.9x13	Gewindeschneidschraube 3.9x13	Tornillo Self-tapping 3.9x13	Vies Autoflettante 3.9x13
15	1	4.005.14.004	OR 0130-1	O-ring 0130-1	O-ring 0130-1	OR 0130-1	Joint torique 0130-1
16	1	4.005.24.013	Guarnizione OR ø4.34X3.53	Gasket OR ø4.34X3.53	Dichtung OR ø4.34X3.53	Guarnición OR ø4.34X3.53	Garniture OR ø4.34X3.53
17	1	4.008.02.001	Rondella 6.4x11x1.6 DIN433 UNI6592 ZEB	Washer 6.4x11x1.6 DIN433 UNI6592 ZEB	Unterlegscheibe 6.4x11x1.6 DIN433 UNI6592 ZEB	Arandela 6.4x11x1.6 DIN433 UNI6592 ZEB	Rondelle 6.4x11x1.6 DIN433 UNI6592 ZEB
18	2	4.008.12.005	Rondella Rame G1/8	Copper washer G1/8	Kupferunterlegscheibe G1/8	Arandelade cobre G1/8	Rondelle cuivre G1/8
19	1	4.008.14.003	Rondella Rame M5	Copper washer M5	Kupferunterlegscheibe M5	Arandela de cobre M5	Rondelle cuivre M5
20	1	4.025.04.002	Seeger	Seeger	Seeger	Seeger	Seeger
21	1	4.027.14.005	Ugello 1.25 (60°S)	Nozzle 1.25 (60°S)	Duse 1.25 (60°S)	Boquilla 1.25 (60°S)	Buse 1.25 (60°S)

Preassembled Boiler PH3025/3040

Premontato Caldaia PH3025/3040

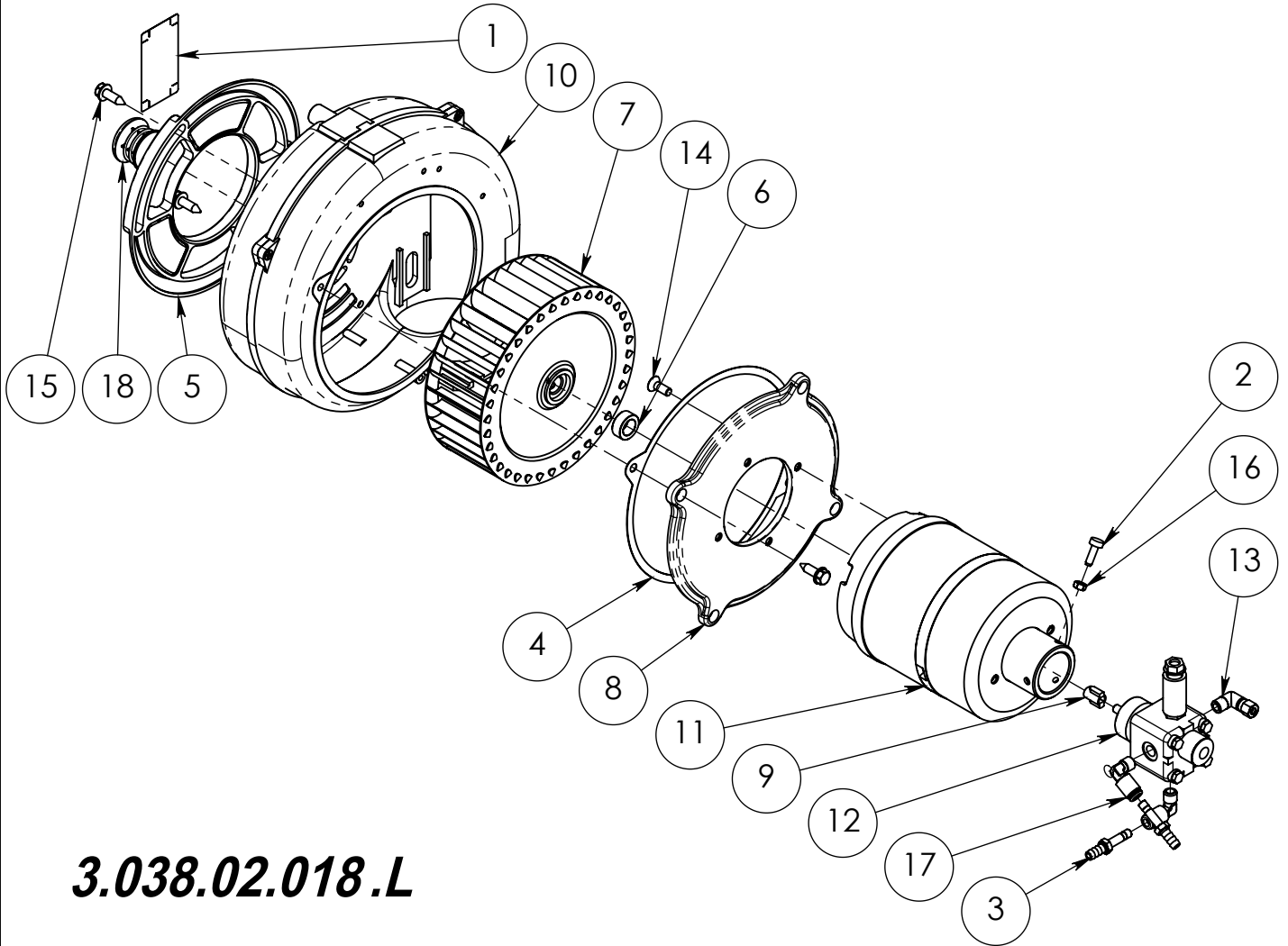


2.041.04.021.E

Pos.	Q.Ty	Code	ITALIANO	ENGLISH	DEUTSCH	ESPAÑOL	FRANCAIS
1	2	1.015.24.002	Ghiera 1/2"G	Ferrule 1/2"G	Zwinge 1/2"G	Abrazadera 1/2"G	Embout 1/2"G
2	1	1.054.04.006	Coperchio	Cover	Deckel	Tapa	Couvercle
3	1	1.056.04.019	Boccaglio ø75.4	Pipe union ø75.4	Stutzen ø75.4	Boca ø75.4	Mamelon ø75.4
4	1	1.094.04.005	Isolante termico 20-25L	Thermal insulator 20-25L	Waermeschutzstoff 20-25L	Aislador termal 20-25L	Isolateur thermique 20-25L
5	1	2.012.04.013	Coperchio W 20L	Cover W 20L	Deckel W 20L	Tapa W 20L	Couvercle W 20L
6	1	2.023.04.024	Camicia	Jacket	Mantel	Camisa	Chemise
7	1	2.029.04.014	Serpentina 15L	Coil 15L	Schlange 15L	Serpentin 15L	Serpentin 15L
8	1	2.056.04.001	Fascetta ø317	Clamp ø317	Klemme ø317	Faja ø317	Petit bande ø317
9	1	2.111.04.006	Camicia esterna PH	External jacket PH	Äusserer Mantel PH	Camisa externa PH	Chemise externe PH

Conveyor 12V 50Hz

Convogliatore 12V 50Hz

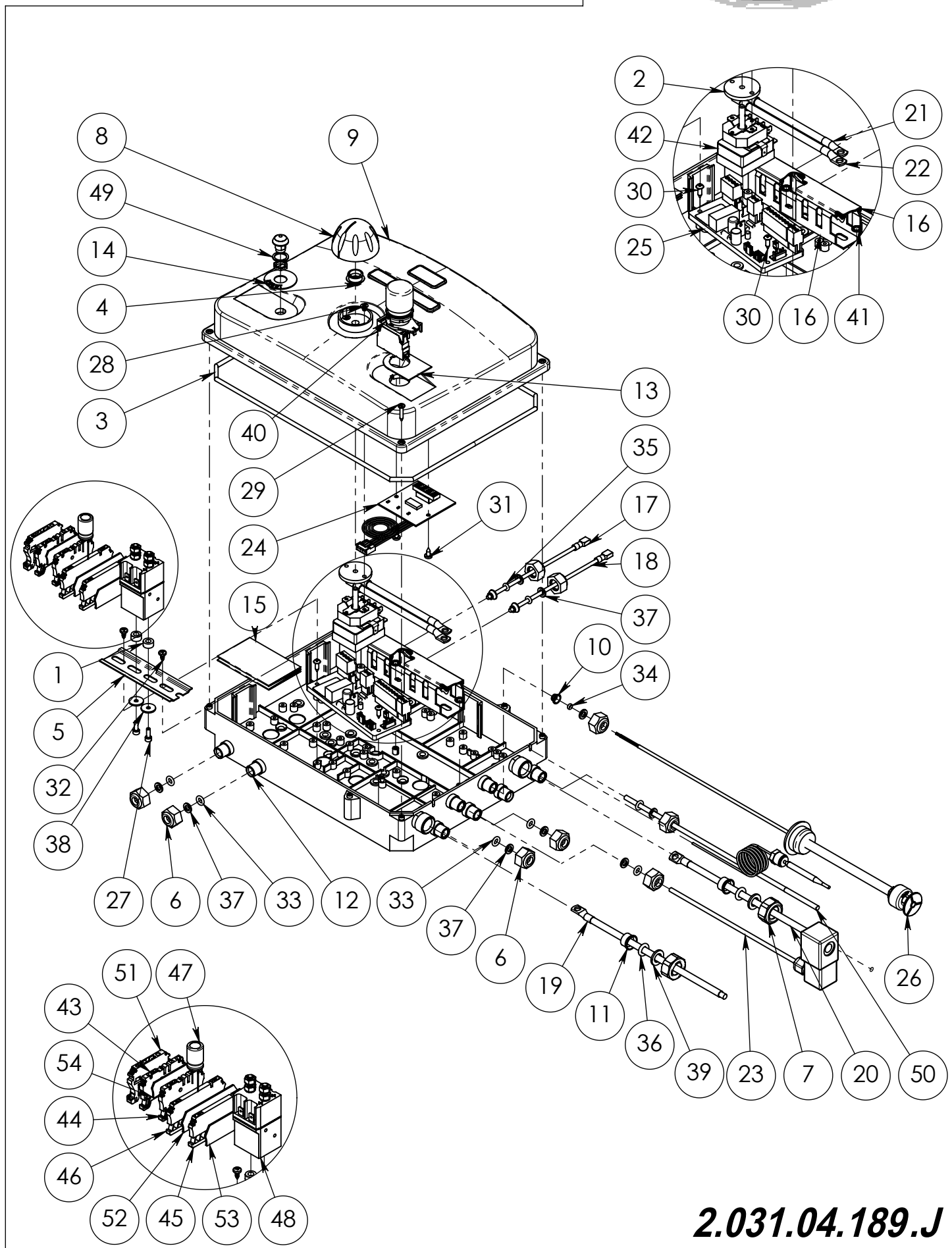


3.038.02.018.L

Pos.	Q.Ty	Code	ITALIANO	ENGLISH	DEUTSCH	ESPAÑOL	FRANCAIS
1	1	0.007.02.001	Etichetta 70x38	Label 70x38	Etikett 70x38	Etiqueta 70x38	Étiquette 70x38
2	3	1.004.04.001	Vite ø10 M5x20 (OT)	Screw ø10 M5x20 (OT)	Schrauben ø10 M5x20 (OT)	Tornillo ø10 M5x20 (OT)	Vis ø10 M5x20 (OT)
3	2	1.005.04.002	Innesto rapido	Quick coupling	Schnelle kupplung	Enchufe rapido	Raccord rapid
4	1	1.006.22.002	Guarnizione	Gasket	Dichtung	Guarnición	Garniture
5	1	1.009.02.003	Griglia controllo aria convogliatore	Grate for conveyor air check	Kontrollgitter Lüfterhaube	Rejilla de control aire transportador	Grille contrôle air convoyeur
6	1	1.060.02.011	Distanziale ø20	Spacer ø20	Distanzstueck ø20	Distanciador ø20	Entretoise ø20
7	1	1.073.04.011	Ventola ø160-ø12.7	Impeller ø160-ø12.7	Antreiber ø160-ø12.7	Impedor ø160-ø12.7	Roue à aubes ø160-ø12.7
8	1	1.074.02.045	Flangia	Flange	Flansch	Borde	Bride
9	1	1.098.02.001	Giunto DX	Coupling DX	Kupplung DX	Acoplamiento DX	Accouplement DX
10	1	2.017.22.003	Carter	Guard	Gehäuse	Cârtier	Carter
11	1	3.002.04.003	Motore Elettrico 12V DC 2300W 2800rpm	Electric Motor 12V DC 2300W 2800rpm	Elektromotor 12V DC 2300W 2800rpm	Motor Eléctrico 12V DC 2300W 2800rpm	Moteur électrique 12V DC 2300W 2800rpm
12	1	3.015.24.012	Pompa gasolio SP-9504316M/2	Diesel pump SP-9504316M/2	Heizölpumpe SP-9504316M/2	Bomba gasóleo SP-9504316M/2	Pompe gasoil SP-9504316M/2
13	1	3.050.14.001	Raccordo	Connection	Leiste	Filete	Filet
14	4	4.002.24.003	Vite M6x16 UNI5933	Screw M6x16 UNI5933	Schrauben M6x16 UNI5933	Tornillo M6x16 UNI5933	Vis M6x16 UNI5933
15	4	4.002.94.012	Vite autofilettante 6.3x20 AB 6950	Self-tapping Screw 6.3x20 AB 6950	Selbschneidendeschraube 6.3x20 AB 6950	Tornillo autoblocante 6.3x20 AB 6950	Vis autofiletant 6.3x20 AB 6950
16	3	4.009.02.001	Dado M5 UNI5588	Nut M5 UNI5588	Mutter M5 UNI5588	Dado M5 UNI5588	Ecrou M5 UNI5588
17	2	4.012.04.013	Raccordo a L G1/4	L Connection G1/4	Leiste L G1/4	Filete L G1/4	Filet L G1/4
18	1	4.036.02.002	Tappo ø32	Plug ø32	Deckel ø32	Tapón ø32	Bouchon ø32

Electric pannel 12V 50Hz FIREBOX

Quadro elettrico 12V 50Hz FIREBOX



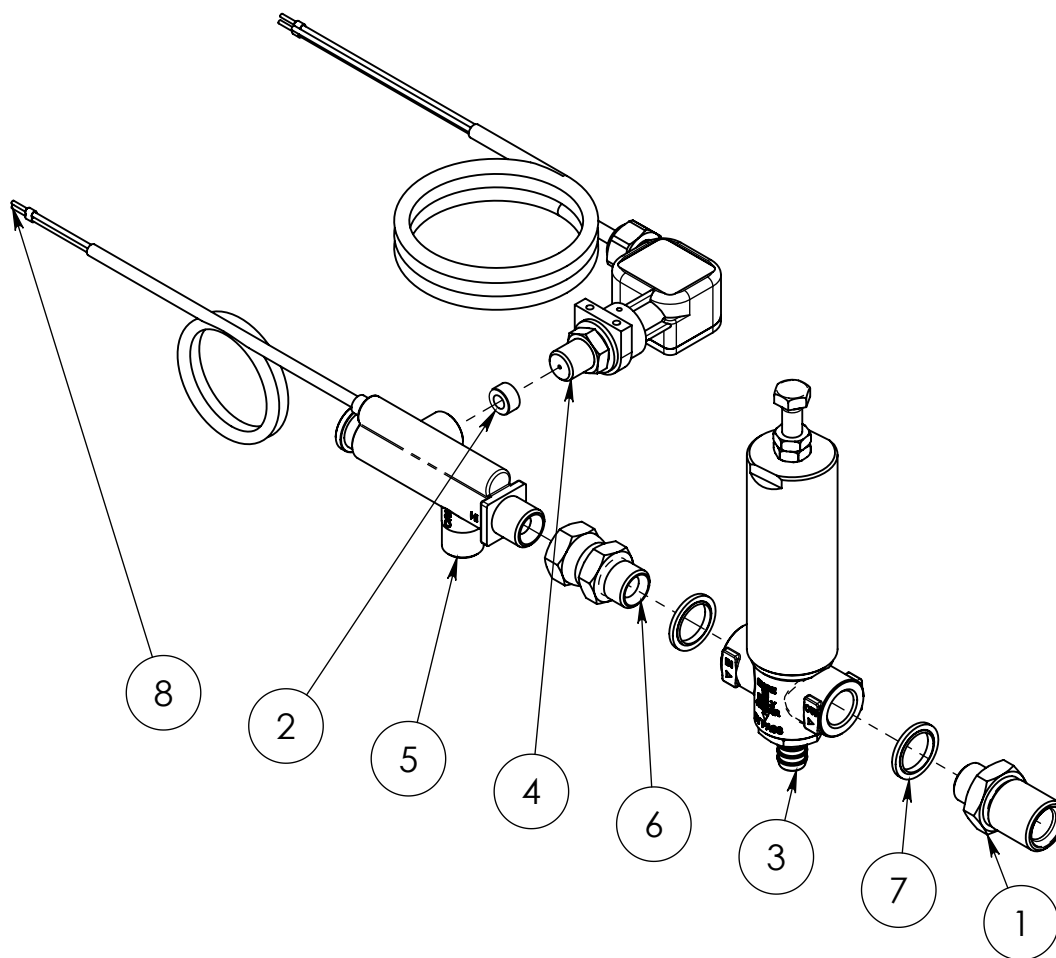
2.031.04.189.J



Pos.	Q.Ty	Code	ITALIANO	ENGLISH	DEUTSCH	ESPAÑOL	FRANCAIS
1	2	1.006.11.007	Guarnizione ø6xø11.8x6	Gasket ø6xø11.8x6	Dichtung ø6xø11.8x6	Guarnición ø6xø11.8x6	Garniture ø6xø11.8x6
2	1	1.006.14.001	Guarnizione ø36	Gasket ø36	Dichtung ø36	Guarnición ø36	Garniture ø36
3	1	1.006.14.004	Guarnizione ø4x1020	Gasket ø4x1020	Dichtung ø4x1020	Guarnición ø4x1020	Garniture ø4x1020
4	1	1.006.14.012	Guarnizione	Gasket	Verzierung	Guarnición	Garniture
5	1	1.011.04.081	Supporto L110	Support L110	Halter L110	Soporte L110	Support L110
6	9	1.015.32.008	Ghiera G1/4"	Ferrule G1/4"	Zwinge G1/4"	Abrazadera G1/4"	Embout G1/4"
7	2	1.015.32.015	Ghiera 1/2 G-F Pl. 15	Ferrule 1/2 G-F Pl. 15	Zwinge 1/2 G-F Pl. 15	Abrazadera 1/2 G-F Pl. 15	Embout 1/2 G-F Pl. 15
8	1	1.021.04.006	Manopla	Knob	Griff	Pomo	Poignée
9	1	1.054.04.055	Coperchio scatola elettrica	Electrical box cover	Elektro-Deckel	Cubierta de la caja eléctrica	Couverture de boîte électrique
10	3	1.064.04.010	Boccola	Bushing	Buchse	Buje	Boucle
11	2	1.064.04.024	Pressacavo ø12	Cable clamping ø12	Kabelklemme ø12	Prensacables ø12	Serre-câble ø12
12	1	1.078.04.059	Scatola elettrica 310x230x50	Electric case 310x230x50	Elektrokasten 310x230x50	Caja eléctrica 310x230x50	boîte électrique 310x230x50
13	1	1.087.04.301	Etichetta	Label	Etikett	Etiqueta	Étiquette
14	1	1.087.04.303	Etichetta reset	Label reset	Etikett reset	Etiqueta reset	Étiquette reset
15	1	1.093.04.128	Schema collegamento caldaia 12-24V	Boilers connction 12-24V	Elektrish Verbindung 12-24V	Esquema colegamento calderas 12-24V	Schéma de connexion chaudières 12-24V
16	1	1.110.04.003	Canaletta T1 25x40 G L140	Groove T1 25x40 G L140	Nut T1 25x40 G L140	Surco T1 25x40 G L140	Cannelure T1 25x40 G L140
17	1	2.020.14.131	Cavo elettrico 2.5mmqx1500	Power cable 2.5mmqx1500	Energie kabel 2.5mmqx1500	Cable elettrico 2.5mmqx1500	Cable électrique 2.5mmqx1500
18	1	2.020.14.132	Cavo elettrico 2.5mmqx1500	Power cable 2.5mmqx1500	Energie kabel 2.5mmqx1500	Cable elettrico 2.5mmqx1500	Cable électrique 2.5mmqx1500
19	1	2.020.14.140	Cavo 16mmq	Cable 16mmq	Kabel 16mmq	Cable 16mmq	Cable 16mmq
20	1	2.020.14.141	Cavo 16mmq	Cable 16mmq	Kabel 16mmq	Cable 16mmq	Cable 16mmq
21	1	2.020.14.142	Cavo 110x16mmq	Cable 110x16mmq	Kabel 110x16mmq	Cable 110x16mmq	Cable 110x16mmq
22	1	2.020.14.143	Cavo 120x16mmq	Cable 120x16mmq	Kabel 120x16mmq	Cable 120x16mmq	Cable 120x16mmq
23	1	2.083.02.001	Bobina 12V	Coil 12V	Spule 12V	Bobina 12V	Bobine 12V
24	1	3.024.02.038	Scheda led 12-24-220-400V	Board led 12-24V	Karte led 12-24V	Tarjeta led 12-24V	Carte led 12-24V
25	1	3.024.02.039	Scheda elettronica MCC124 (12V/24V)	Electronic Board MCC124 (12V/24V)	ElektronischeKarte MCC124 (12V/24V)	Tarjeta electrónico MCC124 (12V/24V)	Carte électronique MCC124 (12V/24V)
26	1	3.030.02.015	Livellostato 180mm	Leveller 180mm	Wasser Niveau 180mm	Nivelador 180mm	Niveleur 180mm
27	2	4.002.14.041	Vite M4x12 UNI5931	Screw M4x12 UNI5931	Schrauben M4x12 UNI5931	Tornillo M4x12 UNI5931	Vis M4x12 UNI5931
28	2	4.002.72.009	Vite TC M4x6	Screw TC M4x6	Schrauben TC M4x6	Tornillo TC M4x6	Vis TC M4x6
29	1	4.002.92.001	Vite autofilettante 3.5x19	Self-tapping Screw 3.5x19	Selbschneidendeschraube 3.5x19	Tornillo autoblocante 3.5x19	Vis autofiletant 3.5x19
30	2	4.002.94.005	Vite autofilettante 3.9x13	Self-tapping Screw 3.9x13	Gewindschneidschraube 3.9x13	Tornillo Self-tapping 3.9x13	Vies Autofilettante 3.9x13
31	2	4.002.94.015	Vite autofilettante 3.9x9.5	Self-tapping Screw 3.9x9.5	Selbschneidendeschraube 3.9x9.5	Tornillo autoblocante 3.9x9.5	Vis autofiletant 3.9x9.5
32	2	4.002.94.015	Vite autofilettante 3.9x9.5	Self-tapping Screw 3.9x9.5	Selbschneidendeschraube 3.9x9.5	Tornillo autoblocante 3.9x9.5	Vis autofiletant 3.9x9.5
33	6	4.005.22.009	OR 3024	O-ring 3024	O-ring 3024	OR 3024	Joint torique 3024
34	1	4.005.22.012	OR 2-105	O-ring 2-105	O-ring 2-105	OR 2-105	Joint torique 2-105
35	2	4.005.22.012	OR 2-105	O-ring 2-105	O-ring 2-105	OR 2-105	Joint torique 2-105
36	2	4.005.22.028	OR 0080-35	O-ring 0080-35	O-ring 0080-35	OR 0080-35	Joint torique ORM 0080-35
37	9	4.008.02.001	Rondella 6.4x11x1.6 DIN433 UNI6592 ZEB	Washer 6.4x11x1.6 DIN433 UNI6592 ZEB	Unterlegscheibe 6.4x11x1.6 DIN433 UNI6592 ZEB	Arandela 6.4x11x1.6 DIN433 UNI6592 ZEB	Rondelle 6.4x11x1.6 DIN433 UNI6592 ZEB
38	2	4.008.04.007	Rondella M4 UNI6593	Washer M4 UNI6593	Unterlegscheibe M4 UNI6593	Arandela M4 UNI6593	Rondelle M4 UNI6593
39	2	4.008.04.012	Rondella M10 10.5x18x2	Washer M10 10.5x18x2	Unterlegscheibe M10 10.5x18x2	Arandela M10 10.5x18x2	Rondelle M10 10.5x18x2
40	1	4.018.04.020	Interruttore	Switch	Schalter	Interruptor	Interrupteur
41	2	4.025.04.008	Seeger KS 6	Seeger KS 6	Seeger KS 6	Seeger KS 6	Seeger KS 6
42	1	4.031.04.003	Termostato 30°-150°	Thermostat 30°-150°	Thermostat 30°-150°	Termostato 30°-150°	Thermostat 30°-150°
43	1	4.033.04.042	Morsettieria	Terminal Block	Klemmleisten	Tableros de bornes	Plaques à bornes
44	1	4.033.04.043	Morsettieria	Terminal Block	Klemmleisten	Tableros de bornes	Plaques à bornes
45	1	4.033.04.044	Morsettieria	Terminal Block	Klemmleisten	Tableros de bornes	Plaques à bornes
46	1	4.033.04.045	Morsettieria	Terminal Block	Klemmleisten	Tableros de bornes	Plaques à bornes
47	1	4.035.02.019	Condensatore 1000mf 16X25 63V	Condenser 1000mf 16X25 63V	Kondensator 1000mf 16X25 63V	Condensador 1000mf 16X25 63V	Condenseur 1000mf 16X25 63V
48	1	4.042.07.002	Teleruttore	Remote control switch	Fernschalter	Telerruptor	Telerrupteur
49	1	4.053.04.005	Pulsante Reset (L=400mm) + Plug	Button Reset (L=400mm) + Plug	Drucktaste Reset (L=400mm) + Plug	Pulsante Reset (L=400mm) + Plug	Bouton Reset (L=400mm) + Plug
50	1	4.069.04.002	Sonda controllo fiamma	Flame control probe	Flamme-Sonde	Sensor de llama	sonde de contrôle de flamme
51	1	4.093.04.005	Morsettieria	Terminal Block	Klemmleisten	Tableros de bornes	Plaques à bornes
52	1	4.093.04.006	Terminale (di cavo)	Terminal	Schuh	Terminal	Boites d'extrémité
53	1	4.093.04.007	Terminale (di cavo)	Terminal	Schuh	Terminal	Boites d'extrémité
54	1	4.093.04.008	Terminale (di cavo)	Terminal	Schuh	Terminal	Boites d'extrémité

Valves Group 250BAR

Gruppo valvola 250BAR



2.100.04.016.F

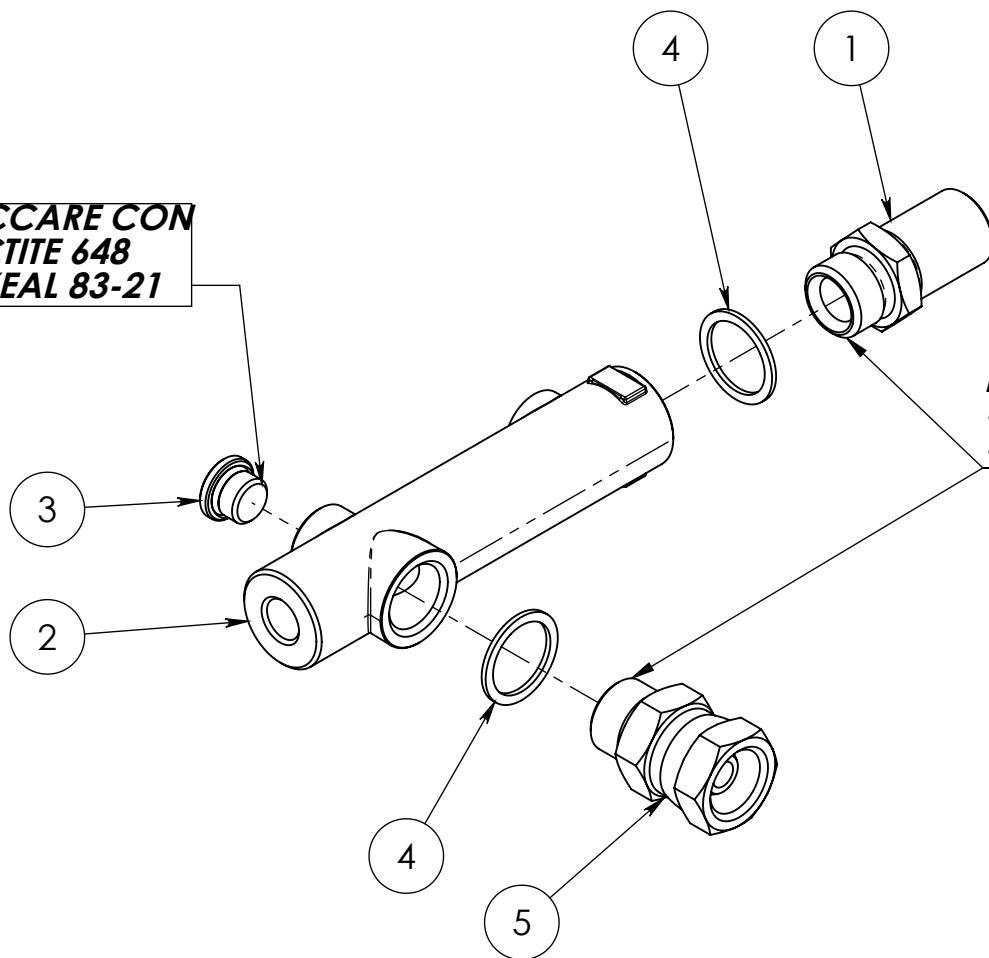
Pos.	Q.Ty	Code	ITALIANO	ENGLISH	DEUTSCH	ESPAÑOL	FRANCAIS
1	1	1.001.04.052	Raccordo M22x1.5M - G3/8M	Connection M22x1.5M - G3/8M	Leiste M22x1.5M - G3/8M	Filete M22x1.5M - G3/8M	Filet M22x1.5M - G3/8M
2	1	1.006.11.007	Guarnizione ø6xø11.8x6	Gasket ø6xø11.8x6	Dichtung ø6xø11.8x6	Guarnición ø6xø11.8x6	Garniture ø6xø11.8x6
3	1	3.003.22.006	Valvola di sicurezza 250Bar G3/8-FF	Safety pressure valve 400Bar G3/8-FF	Max druck Einstellungsventile 400Bar G3/8-FF	Valvula de seguridad 400Bar G3/8-FF	Soupage de presion maximal 400Bar G3/8-FF
4	1	3.013.04.014	Pressostato 1/4 Pi15 A3 V250 - 1300mm	pressure gauge 1/4 Pi15 A3 V250 - 1300mm	Druckschalter 1/4 Pi15 A3 V250 - 1300mm	Presostato 1/4 Pi15 A3 V250 - 1300mm	Pressostat 1/4 Pi15 A3 V250 - 1300mm
5	1	3.054.04.002	Flussostato 3\8"G-MM 1\4"G-F 3A	Flow switch 3\8"G-MM 1\4"G-F 3A	Stromschalter 3\8"G-MM 1\4"G-F 3A	Flusostato 3\8"G-MM 1\4"G-F 3A	Flussostat 3\8"G-MM 1\4"G-F 3A
6	1	4.012.04.002	Raccordo G3/8	Connection G3/8	Leiste G3/8	Filete G3/8	Filet G3/8
7	2	4.070.04.001	Guarnizione G3/8	Gasket G3/8	Dichtung G3/8	Guarnición G3/8	Garniture G3/8
8	4	4.024.14.001	Terminale (di cavo)	Terminal	Schuh	Terminal	Boites d'extrémité

Collector 250BAR FIREBOX

Collettore 250BAR FIREBOX



**BLOCCARE CON
-LOCTITE 648
-LOXEAL 83-21**



**BLOCCARE CON
-LOCTITE 648
-LOXEAL 83-21**

2.048.04.018.F

Pos.	Q.Ty	Code	ITALIANO	ENGLISH	DEUTSCH	ESPAÑOL	FRANCAIS
1	1	1.001.04.030	Raccordo M22x1.5M-G1/2M	Connection M22x1.5M-G1/2M	Leiste M22x1.5M-G1/2M	Filete M22x1.5M-G1/2M	Filet M22x1.5M-G1/2M
2	1	1.042.24.005	Collettore WSF	Collector WSF	Kollektor WSF	Colector WSF	Collecteur WSF
3	1	2.013.02.004	Tappo 1/4G+OR	Cap 1/4G+OR	Deckel 1/4G+OR	Tapón 1/4G+OR	Bouchon 1/4G+OR
4	2	4.008.12.007	Rondella Rame G1/2	Copper washer G1/2	Kupferunterlegsscheibe G1/2	Arandelade cobre G1/2	Rondelle cuivre G1/2
5	1	4.012.04.003	Raccordo G1/2 MF	Connection G1/2 MF	Leiste G1/2 MF	Filete G1/2 MF	Filet G1/2 MF