



EQUIPAGGIAMENTI  
TECNICI  
LAVAGGIO

# UNIVERSAL GUN

24/05/11

GB

## RED TRIGGER P/N 15.0003.11

### FEATURES:

- \* Body and sealing seat in polypropylene reinforced with fiberglass.
- \* Pin in polypropylene reinforced with fiberglass.
- \* Seal obtained by ball in tempered stainless steel AISI 420 and spring in stainless steel AISI 302
- \* Seals in NBR
- \* Rear fluid entry
- \* Inlet / Outlet G 1/2 F
- \* Max Pressure 25bar – 2.5Mpa (363psi)
- \* Max Flow rate 70 l/min (18.5 USGp.m.)
- \* Max temperature 50°C (120° F)
- \* Weight 131 gr (4.62 oz.)

## BLUE TRIGGER P/N 15.0003.12

### FEATURES:

- \* Body and sealing seat in polypropylene reinforced with fiberglass
- \* Pin in stainless steel AISI 303
- \* Seal obtained by ball in tempered stainless steel AISI 420 and spring in stainless steel AISI 302
- \* Seals in VITON
- \* Rear fluid entry
- \* Inlet / Outlet G 1/2 F
- \* Max Pressure 25bar – 2.5Mpa (363psi)
- \* Max Flow rate 70 l/min (18.5 USGp.m.)
- \* Max temperature 50°C (120° F)
- \* Weight 131 gr (4.62 oz.)

## GREY TRIGGER P/N 15.0013.12

### FEATURES:

- \* Body and sealing seat in polypropylene reinforced with fiberglass
- \* Pin in stainless steel AISI 316
- \* Seal obtained by ball in stainless steel AISI 316 and spring in stainless steel AISI 316
- \* Seals in VITON
- \* Rear fluid entry
- \* Inlet / Outlet G 1/2 F
- \* Max Pressure 25bar – 2.5Mpa (363psi)
- \* Max Flow rate 70 l/min (18.5 USGp.m.)
- \* Max temperature 50°C (120° F)
- \* Weight 131 gr (4.62 oz.)

## BROWN TRIGGER P/N 15.0015.12

### FEATURES:

- \* Body and sealing seat in polypropylene reinforced with stapled fiberglass
- \* Pin in stainless steel AISI 316
- \* Seal obtained by ball in stainless steel AISI 316 and spring in stainless steel AISI 316
- \* Seals in VITON
- \* Rear fluid entry
- \* Inlet / Outlet G 1/2 F
- \* Max Pressure 25bar – 2.5Mpa (363psi)
- \* Max Flow rate 70 l/min (18.5 USGp.m.)
- \* Max temperature 50°C (120° F)
- \* Weight 131 gr (4.62 oz.)

## GREEN TRIGGER P/N 15.0014.12

### FEATURES:

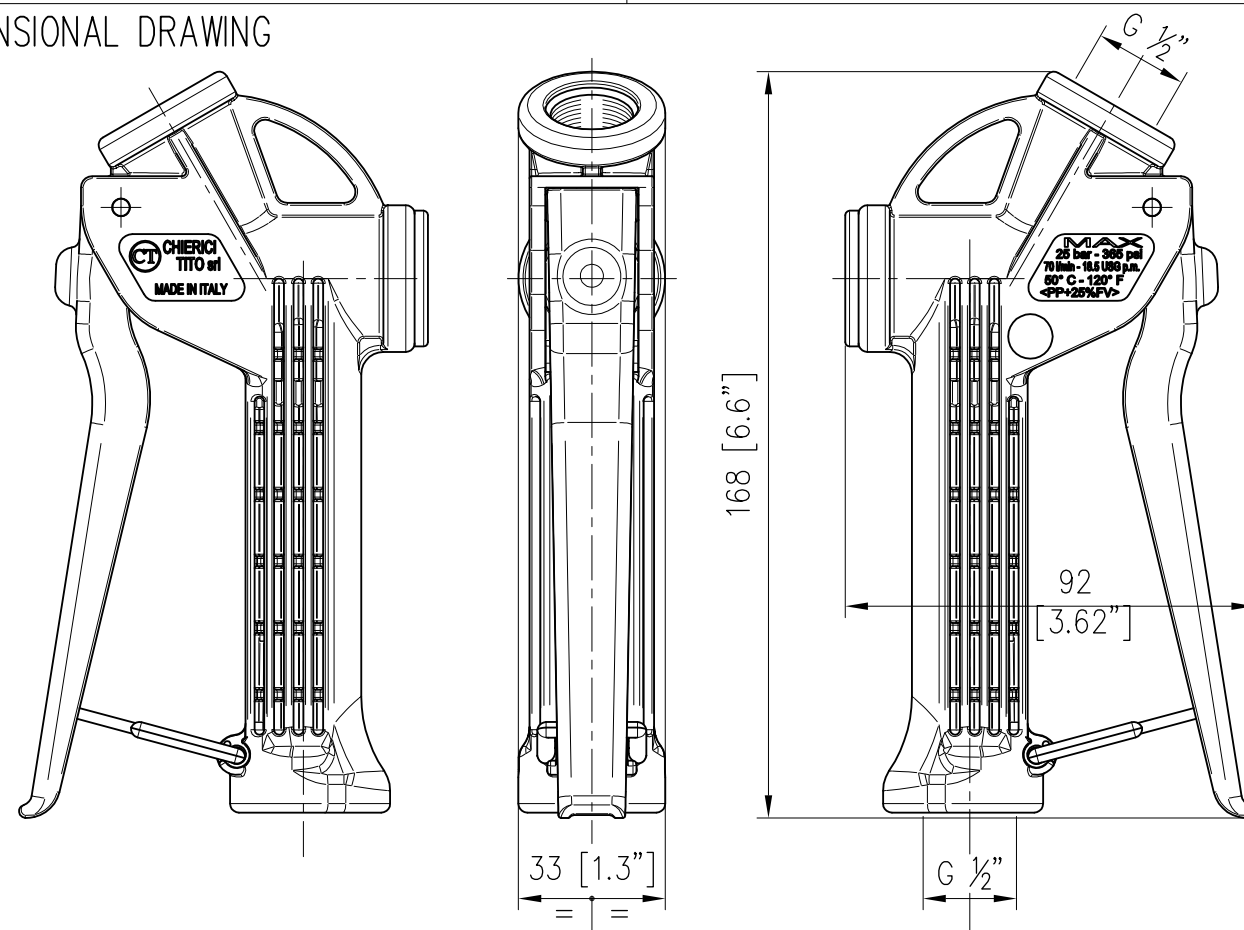
- \* The gun always leaks a small quantity of fluid  
Pressure loss: 2.8bar – 0.3Mpa (40psi) equal to 1–1.3 l/min 0.3 USGp.m.
- \* Body and sealing seat in polypropylene reinforced with fiberglass
- \* Pin in stainless steel AISI 316
- \* Seal obtained by ball in stainless steel AISI 316 and spring in stainless steel AISI 316
- \* Seals in VITON
- \* Rear fluid entry
- \* Inlet / Outlet G 1/2 F
- \* Max Pressure 25bar – 2.5Mpa (363psi)
- \* Max Flow rate 70 l/min (18.5 USGp.m.)
- \* Max temperature 50°C (120° F)
- \* Weight 131 gr (4.62 oz.)

## YELLOW TRIGGER P/N 15.0003.10

### FEATURES:

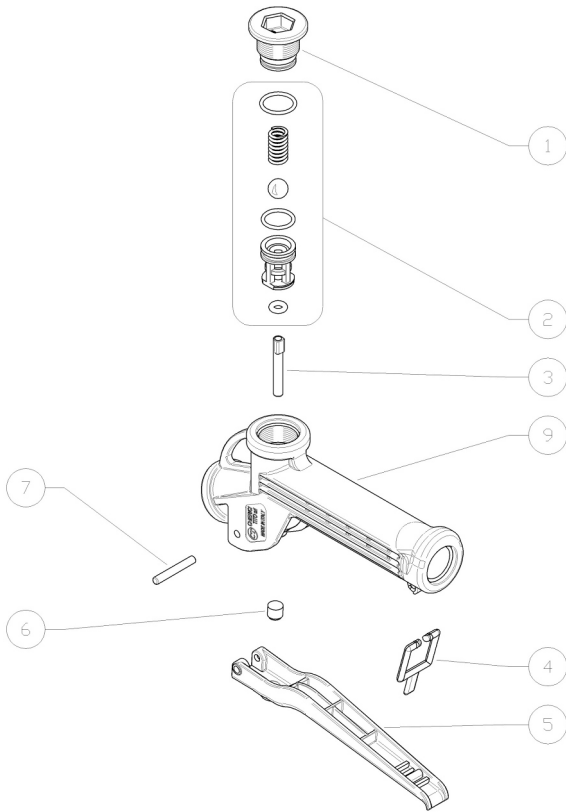
- \* Body and sealing seat in polyamide reinforced with fiberglass
- \* Pin in stainless steel AISI 303
- \* Seal obtained by ball in tempered stainless steel AISI 420 and spring in stainless steel AISI 302
- \* Seals in VITON
- \* Rear fluid entry
- \* Inlet / Outlet G 1/2 F
- \* Max Pressure 60bar – 6Mpa (870psi)
- \* Max Flow rate 70 l/min (18.5 USGp.m.)
- \* Max temperature 60°C (140° F)
- \* Weight 162 gr (5.7 oz.)

## DIMENSIONAL DRAWING



15.0003.10R CP12-06 sp. gun, yellow trigger

15.0003.11R CP12-02 sp.gun red trigger



15.0003.12R CP12-00 sp. gun, blue trigger

15.0013.12R CP12-04 sp. gun, grey trigger

| Pos. | P/N         | Description                                   | Q.ty | K1 | K2 | K3 | K4 |    |
|------|-------------|---|------|----|----|----|----|----|
| 1    | 13.0003.24R | Plug -Universal, PP black                     | 1    |    |    |    |    | 5  |
| 1    | 13.0003.39R | Plug -Universal gun, Pa6 (1)                  | 1    |    |    |    |    | 5  |
| 2    | 99.0003.04R | Spares kit,Univer.gun, blue trig. (2)         | 1    |    |    |    |    | 1  |
| 2    | 99.0003.16R | Spares kit -Universal gun, yellow trigger (1) | 1    |    |    |    |    | 1  |
| 2    | 99.0003.03R | Spares kit,Universal gun, red trigger (3)     | 1    |    |    |    |    | 1  |
| 2    | 99.0003.13R | Spares kit,Univer.gun, grey trigger (4)       | 1    |    |    |    |    | 1  |
| 3    | 12.0050.08R | Parallel pin, 5x36 mm Sst.                    | 1    |    |    |    |    | 5  |
| 3    | 13.0003.55R | Parallel pin, 5x36 mm PP (3)                  | 1    |    |    |    |    | 5  |
| 4    | 13.0003.30R | Red safety latch, Universal gun               | 1    |    |    |    |    | 10 |
| 5    | 13.0003.32R | Blue trigger -Universal gun (2)               | 1    |    |    |    |    | 10 |
| 5    | 13.0003.31R | Red trigger -Universal gun (3)                | 1    |    |    |    |    | 3  |
| 5    | 13.0003.35R | Yellow trigger -Universal gun (1)             | 1    |    |    |    |    | 3  |
| 5    | 13.0003.36R | Gray trigger -Universal gun (4)               | 1    |    |    |    |    | 3  |
| 6    | 13.0003.28R | Stop pin, 8x7 mm                              | 1    |    |    |    |    | 5  |
| 7    | 12.0050.21R | Parallel pin, 4x28 mm                         | 1    |    |    |    |    | 5  |
| 9    | 13.0003.11R | Casing -Universal gun, PP                     | 1    |    |    |    |    | 10 |
| 9    | 13.0003.27R | Casing -Universal gun, Pa6 (1)                | 1    |    |    |    |    | 10 |

(1) 15.0003.10 (2) 15.0003.12 (3) 15.0003.11 (4) 15.0013.12