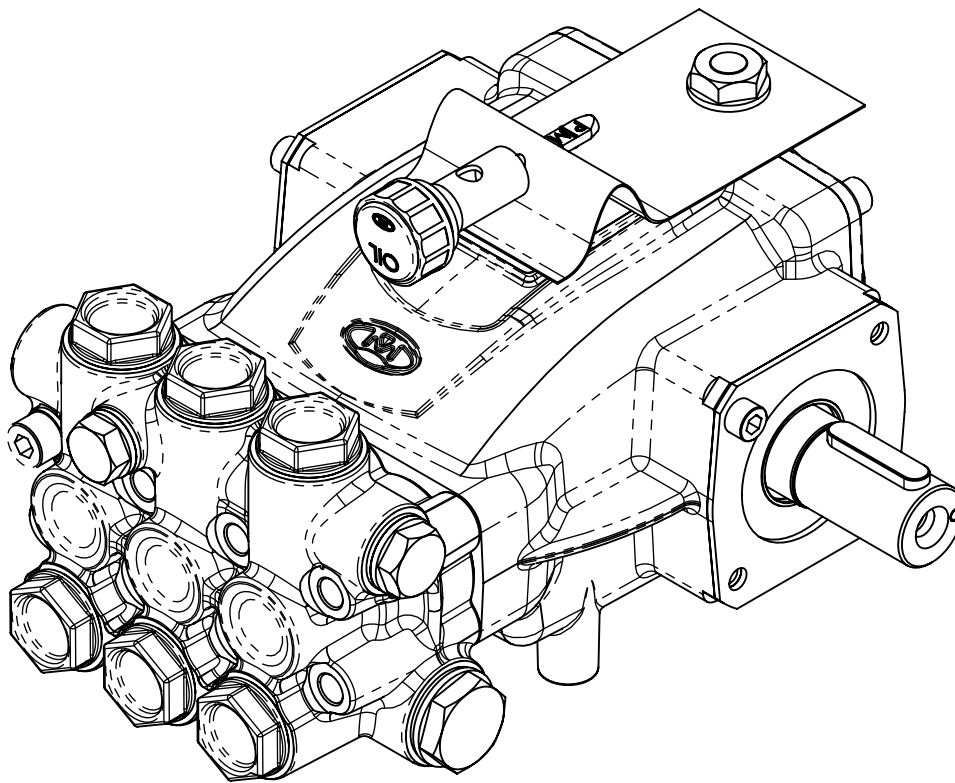


# PMD



General table

Model	Pressure (Bar)	Pressure (Psi)	Flow Rate 1450 rpm (Lit/min)	Flow Rate 1740 rpm (Lit/min)	Flow Rate 1450 rpm (gpm)	Flow Rate 1740 rpm (gpm)	Round 50Hz (RPM)	Round 60Hz (RPM)	Power 50Hz (Hp)	Power 50Hz (Kw)	Power 60Hz (Hp)	Power 60Hz (Kw)
PMD8200(R-L)	200	2900	8.5	10.2	2.24	2.69	1450	1740	4.40	3.30	5.30	3.95
PMD10200(R-L)	200	2900	10	12	2.64	3.17	1450	1740	5.20	3.80	6.20	4.60
PMD11200(R-L)	200	2900	11	13.2	2.91	3.49	1450	1740	5.70	4.25	6.85	5.10
PMD12200(R-L)	200	2900	12	14.4	3.17	3.80	1450	1740	6.20	4.60	7.50	5.60
PMD13200 (R-L)	200	2900	13	15.6	3.43	4.12	1450	1740	6.75	5	8.10	6
PMD14200(R-L)	200	2900	14	16.8	3.70	4.44	1450	1740	7.30	5.45	8.70	6.50
PMD15200(R-L)	200	2900	15	18	3.96	4.76	1450	1740	7.80	5.80	9.35	7

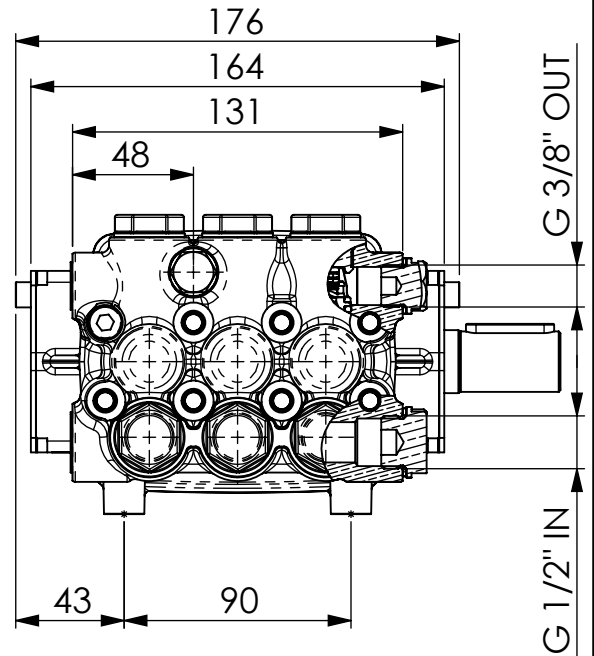
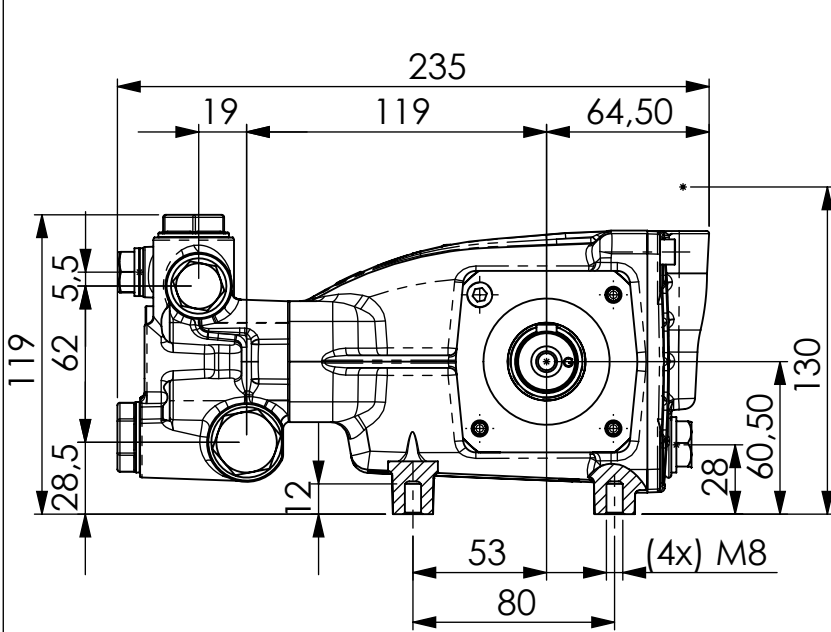




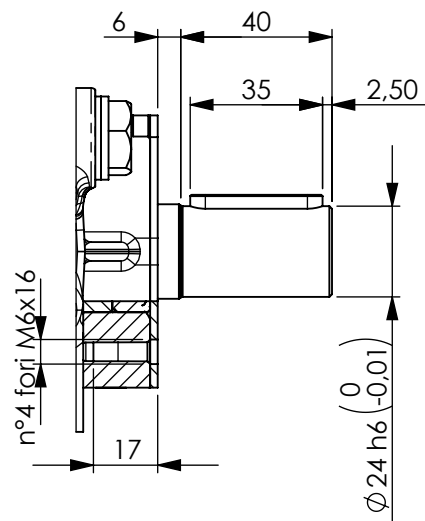
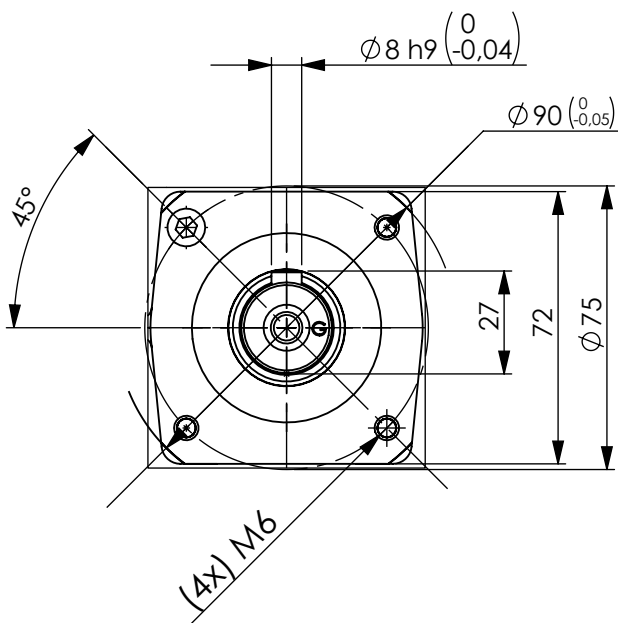
Pos									Cod.	ITALIANO	ENGLISH	DEUTSCH	ESPAÑOL	FRANCAIS
	PMD 15200(R-L)	PMD 8200(R-L)	PMD 10200(R-L)	PMD 11200(R-L)	PMD 12200(R-L)	PMD 13200(R-L)	PMD 14200(R-L)							
1	1	1	1	1	1	1	1	P0.007.001	Etichetta 55x34	Label 55x34	Etiketf 55x34	Etiqueta 55x34	Étiquette 55x34	
2	1	1	1	1	1	1	1	P0.020.002	Olio o Lubrificante HYDRAULIC 0.5 LIT	Oil or Lubricants VANGUARD HYDRAULIC 0.5 LIT	Öl oder Schmierstoffe VANGUARD HYDRAULIC 0.5 LIT	Aceite o lubricante VANGUARD HYDRAULIC 0.5 LIT	OilHule ou lubrifiant VANGUARD HYDRAULIC 0.5 LIT	
3	3	3	3	3	3	3	3	P1.003.006	Rondella Rame ø23.5x9.2x0.5	Copper washer ø23.5x9.2x0.5	Kupferunterlegsscheibe ø23.5x9.2x0.5	Arandela de cobre ø23.5x9.2x0.5	Rondelle cuivre ø23.5x9.2x0.5	
4	1	1	1	1	1	1	1	P1.012.052	Tappo	Cap	Deckel	Tapón	Bouchon	
5	1	1	1	1	1	1	1	P1.020.002	Corpo PM	Body PM	Körper PM	Cuerpo PM	Corps PM	
6	1	1	1	1	1	1	1	P1.054.003	Coperchio Spia ø61.8	Spy cover ø61.8	Abdeckung Spion ø61.8	Cubierta espía ø61.8	Couvercle espion ø61.8	
7	2	2	2	2	2	2	2	P1.054.007	Coperchio	Cover	Deckel	Tapa	Couvercle	
8	1	-	-	-	-	-	-	P1.067.006	Albero "PM" F	Shaft "PM" F	Welle "PM" F	Eje "PM" F	Arbre "PM" F	
9	-	-	-	-	-	-	1	P1.067.007	Albero "PM" G	Shaft "PM" G	Welle "PM" G	Eje "PM" G	Arbre "PM" G	
10	-	-	-	-	1	-	-	P1.067.008	Albero "PM" H	Shaft "PM" H	Welle "PM" H	Eje "PM" H	Arbre "PM" H	
11	-	-	-	-	-	1	-	P1.067.009	Albero "PM" I	Shaft "PM" I	Welle "PM" I	Eje "PM" I	Arbre "PM" I	
12	-	-	-	1	-	-	-	P1.067.011	Albero "PM" M	Shaft "PM" M	Welle "PM" M	Eje "PM" M	Arbre "PM" M	
13	-	1	-	-	-	-	-	P1.067.012	Albero "PM" N	Shaft "PM" N	Welle "PM" N	Eje "PM" N	Arbre "PM" N	
14	-	-	1	-	-	-	-	P1.067.013	Albero "PM" O	Shaft "PM" O	Welle "PM" O	Eje "PM" O	Arbre "PM" O	
15	3	3	3	3	3	3	3	P1.071.020	Pistone ø18 H42 PMD	Piston ø18 H40 PMD	Kolben ø18 H40 PMD	Pistón ø18 H40 PMD	Piston ø18 H40 PMD	
16	1	1	1	1	1	1	1	P2.012.004	Coperchio PMD	Cover PMD	Deckel PMD	Tapa PMD	Couvercle PMD	
17	1	1	1	1	1	1	1	P2.013.021	Tappo 1/2" GAS	Cap 1/2" GAS	Deckel 1/2" GAS	Tapón 1/2" GAS	Bouchon 1/2" GAS	
18	1	1	1	1	1	1	1	P2.013.022	Tappo 3/8" GAS	Cap 3/8" GAS	Deckel 3/8" GAS	Tapón 3/8" GAS	Bouchon 3/8" GAS	
19	-	1	1	1	1	1	1	P2.013.034	tappo di livello con sfiato PM	level cap with vent PM	Level-Cap mit Lüftungs PM	límite de nivel con el respiradero PM	bouchon de niveau avec évent PM	
20	1	1	1	1	1	1	1	P2.013.038	Tappo PMD	Cap PM	Deckel PM	Tapón PM	Bouchon PM	
21	1	1	1	1	1	1	1	P2.035.002	Testata pompa PMD	Pump head PMD	Pumpkopf PMD	Cabeza bomba PMD	Tete de pompe PMD	
22	8	8	8	8	8	8	8	P2.119.001	Vite M8X60	Screw M8X60	Schrauben M8X60	Tornillo M8X60	Vis M8X60	
23	3	3	3	3	3	3	3	P2.119.009	Vite M5x45 inox	Screw M5x45 inox	Schrauben M5x45 inox	Tornillo M5x45 inox	Vis M5x45 inox	
24	3	3	3	3	3	3	3	P2.150.009	Biella PMD	Connecting rod PMD	Plenelstange PMD	Biela PMD	Bielle PMD	
25	12	12	12	12	12	12	12	P4.002.004	Vite M6x16 UNI5931	Screw M6x16 UNI5931	Schrauben M6x16 UNI5931	Tornillo M6x16 UNI5931	Vis M6x16 UNI5931	
26	6	6	6	6	6	6	6	P4.002.013	Vite VITE TCEI M6x30	Screw VITE TCEI M6x30	Schrauben VITE TCEI M6x30	Tornillo VITE TCEI M6x30	Vis VITE TCEI M6x30	
27	1	1	1	1	1	1	1	P4.005.010	OR 3.53x55.56	O-ring 3.53x55.56	O-Ring 3.53x55.56	OR 3.53x55.56	Joint torique 3.53x55.56	
28	1	1	1	1	1	1	1	P4.015.001	Anello 25x62x10	Ring 25x62x10	Ring 25x62x10	Anillo 25x62x10	Bague 25x62x10	
29	3	3	3	3	3	3	3	P4.015.002	Anello 16x24x5 NBR	Ring 16x24x5 NBR	Ring 16x24x5 NBR	Anillo 16x24x5 NBR	Bague 16x24x5 NBR	
30	2	2	2	2	2	2	2	P4.016.002	Cuscinetto 6305	Bearing 6305	Kugellager 6305	Rodamiento 6305	Roulement 6305	
31	1	1	1	1	1	1	1	P4.021.001	Chiavetta 8x7x35	Key 8x7x35	Keil 8x7x35	Chaveta 8x7x35	Clavette 8x7x35	
32	1	1	1	1	1	1	1	P4.025.001	Seeger A25	Seeger A25	Seeger A25	Seeger A25	Seeger A25	
33	1	1	1	1	1	1	1	P4.043.001	Protezione ø20	Protection ø20	Schutz ø20	Protección ø20	Protection ø20	
34	1	1	1	1	1	1	1	P4.043.002	Protezione 15.5	Protection 15.5	Schutz 15.5	Protección 15.5	Protection 15.5	

# PMD Drawing

## Disegno PMD



**Detailed flange view**  
**Vista dettagliata flangia**



**Detailed shaft view**  
**Vista dettagliata albero**

# Spare parts Ricambi



Code	Q.Ty	ITALIANO	ENGLISH	DEUTSCH	ESPAÑOL	FRANCAIS
P2.003.002	6	Valvola VAM ø20	Valve VAM ø20	Ventil VAM ø20	Válvula VAM ø20	Valve VAM ø20
P4.005.008	6	OR 2075	O-ring 2075	O-Ring 2075	OR 2075	Joint torique 2075
P4.005.009	6	OR 3062	O-ring 3062	O-Ring 3062	OR 3062	Joint torique 3062

P9.001.002  
VALVOLA COMPLETA POMPA PM - **KIT VALVES**



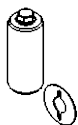
Code	Q.Ty	ITALIANO	ENGLISH	DEUTSCH	ESPAÑOL	FRANCAIS
P4.005.012	3	OR 2112	O-ring 2112	O-Ring 2112	OR 2112	Joint torique 2112
P4.100.003	3	Tenuta pistone posteriore ø18Xø26X8	Piston seal back ø18Xø26X8	Kolbendichtung zurück ø18Xø26X8	Piston sellado posterior ø18Xø26X8	Piston joint arrière ø18Xø26X8
P4.100.004	3	Tenuta pistone anteriore ø18Xø28X10	Front piston seal ø18Xø28X10	Front Kolbendichtung ø18Xø28X10	Junta del pistón delantero ø18Xø28X10	Joint de piston avant ø18Xø28X10

P9.003.003  
GUARNIZIONE PISTONE ø18 POMPA PM - **KIT PLUNGER SEALS**



Code	Q.ty	ITALIANO	ENGLISH	DEUTSCH	ESPAÑOL	FRANCAIS
P4.100.004	1	Tenuta pistone anteriore ø18Xø28X10	Front piston seal ø18Xø28X10	Front Kolbendichtung ø18Xø28X10	Junta del pistón delantero ø18Xø28X10	Joint de piston avant ø18Xø28X10
P1.024.002	1	Diffusore ø18 "PM"	Diffusor ø18 "PM"	Diffusor ø18 "PM"	Diffusor ø18 "PM"	Diffuseur ø18 "PM"
P2.118.001	1	Pressore PM	Pressure Ring PM	Bague de pression PM	Anillo de presión PM	Bague de pression PM

P9.003.004  
GUARNIZIONE PISTONE ø18 POMPA PM PACCO COMPLETO - **KIT COMPLETE SEALS**



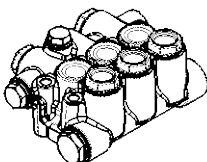
Code	Q.Ty	ITALIANO	ENGLISH	DEUTSCH	ESPAÑOL	FRANCAIS
P1.003.006	1	Rondella Rame ø23.5x9.2x0.5	Copper washer ø23.5x9.2x0.5	Kupferunterlegscheibe ø23.5x9.2x0.5	Arandela de cobre ø23.5x9.2x0.5	Rondelle cuivre ø23.5x9.2x0.5
P1.071.020	1	Pistone ø18 H42 PMD	Piston ø18 H40 PMD	Kolben ø18 H40 PMD	Pistón ø18 H40 PMD	Piston ø18 H40 PMD
P2.119.009	1	Vite M5x45 inox	Screw M5x45 inox	Schrauben M5x45 inox	Tornillo M5x45 inox	Vis M5x45 inox

P9.004.023  
KIT PISTONE ø18 POMPA PMD - **KIT CERAMIC PISTON**



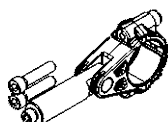
Code	Q.ty	ITALIANO	ENGLISH	DEUTSCH	ESPAÑOL	FRANCAIS
P4.015.002	3	Anello 16x24x5 NBR	Ring 16x24x5 NBR	Ring 16x24x5 NBR	Anillo 16x24x5 NBR	Bague 16x24x5 NBR

P9.039.001  
ANELLI TENUTA OLIO ASTA POMPA MM-PM - **KIT OIL SEALS**



Code	Q.Ty	ITALIANO	ENGLISH	DEUTSCH	ESPAÑOL	FRANCAIS
P2.013.021	1	Tappo 1/2" GAS	Cap 1/2" GAS	Deckel 1/2" GAS	Tapón 1/2" GAS	Bouchon 1/2" GAS
P2.013.022	1	Tappo 3/8" GAS	Cap 3/8" GAS	Deckel 3/8" GAS	Tapón 3/8" GAS	Bouchon 3/8" GAS
P2.035.002	1	Testata pompa PMD	Pump head PMD	Pumpekopf PMD	Cabeza bomba PMD	Tete de pompe PMD
P4.043.001	1	Protezione ø20	Protection ø20	Schutz ø20	Protección ø20	Protection ø20
P4.043.002	1	Protezione 15.5	Protection 15.5	Schutz 15.5	Protección 15.5	Protection 15.5

P9.040.002  
TESTATA COMPLETA PISTONE ø18 POMPA PM - **COMPLETE HEAD OF THE PUMP**

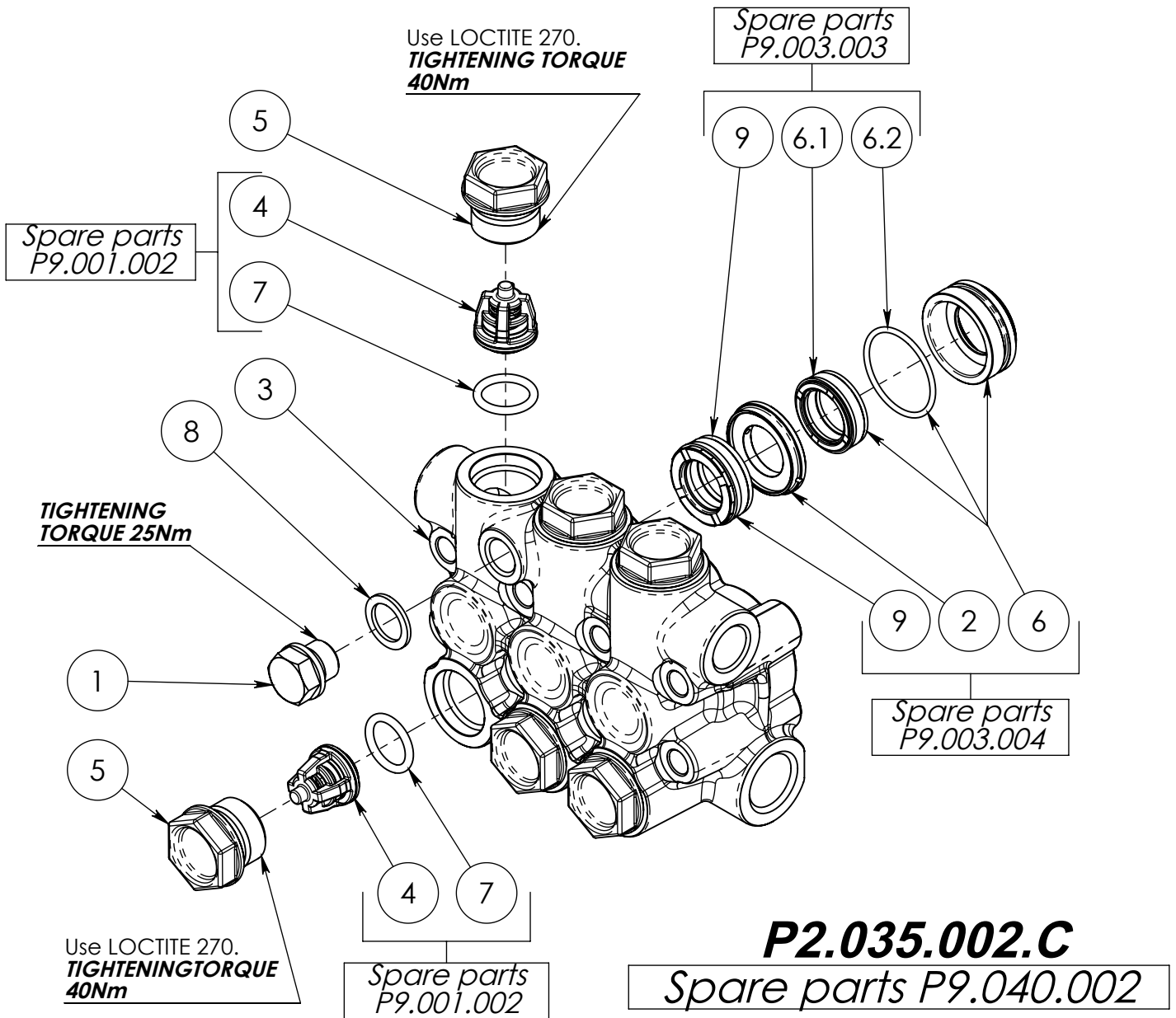


Code	Q.Ty	ITALIANO	ENGLISH	DEUTSCH	ESPAÑOL	FRANCAIS
P2.150.009	1	Biella PMD	Connecting rod PMD	Plenelstange PMD	Biela PMD	Bielle PMD
P4.002.013	2	Vite VITE TCEI M6x30	Screw VITE TCEI M6x30	Schrauben VITE TCEI M6x30	Tornillo VITE TCEI M6x30	Vis VITE TCEI M6x30

P9.041.008  
BIELLA - ASTA POMPA PMD - EDM - **PREASSEMBLED CONNECTING ROD**

# Pump head PMD

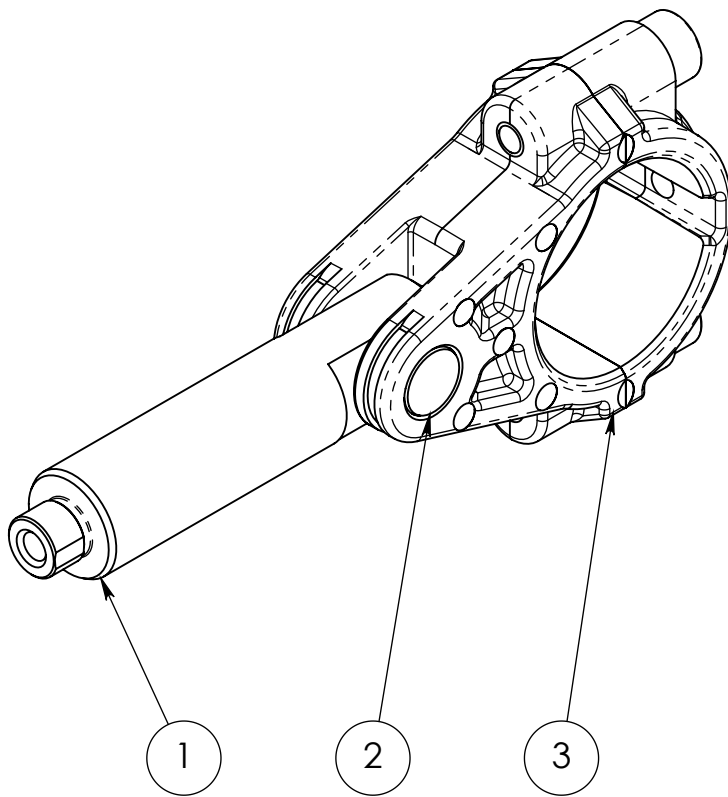
## Testata pompa PMD



Pos.	Q.tà	Cod.	ITALIANO	ENGLISH	DEUTSCH	ESPAÑOL	FRANCAIS
1	1	P1.012.002	Tappo 1/4"Gas	Cap 1/4"Gas	Deckel 1/4"Gas	Tapón 1/4"Gas	Bouchon 1/4"Gas
2	3	P1.024.002	Diffusore ø18 "PM"	Diffusor ø18 "PM"	Diffusor ø18 "PM"	Difusor ø18 "PM"	Diffuseur ø18 "PM"
3	1	P1.043.002	Testata pompa PM	Pump head PM	Pumpekopf PM	Cabeza bomba PM	Tete de pompe PM
4	6	P2.003.002	Valvola VAM ø20	Valve VAM ø20	Ventil VAM ø20	Válvula VAM ø20	Valve VAM ø20
5	6	P2.013.002	Tappo M22x1.5 + OR2075	Cap M22x1.5 + OR2075	Deckel M22x1.5 + OR2075	Tapón M22x1.5 + OR2075	Bouchon M22x1.5 + OR2075
6	3	P2.118.001	Pressore PM	Pressure Ring PM	Bague de pression PM	Anillo de presión PM	Bague de pression PM
7	6	P4.005.009	OR 3062	O-ring 3062	O-Ring 3062	OR 3062	Joint torique 3062
8	1	P4.008.007	Rondella Rame 1/4 Ø13x19x1.5	Copper washer 1/4 Ø13x19x1.5	Kupferunterlegsscheib e 1/4 Ø13x19x1.5	Arandela de cobre 1/4 Ø13x19x1.5	Rondelle cuivre 1/4 Ø13x19x1.5
9	3	P4.100.004	Tenufa pistone anteriore ø18Xø28X10	Front piston seal ø18Xø28X10	Front Kolbendichtung ø18Xø28X10	Junta del pistón delantero ø18Xø28X10	Joint de piston avant ø18Xø28X10

# Connecting rod PMD

## Biella PMD



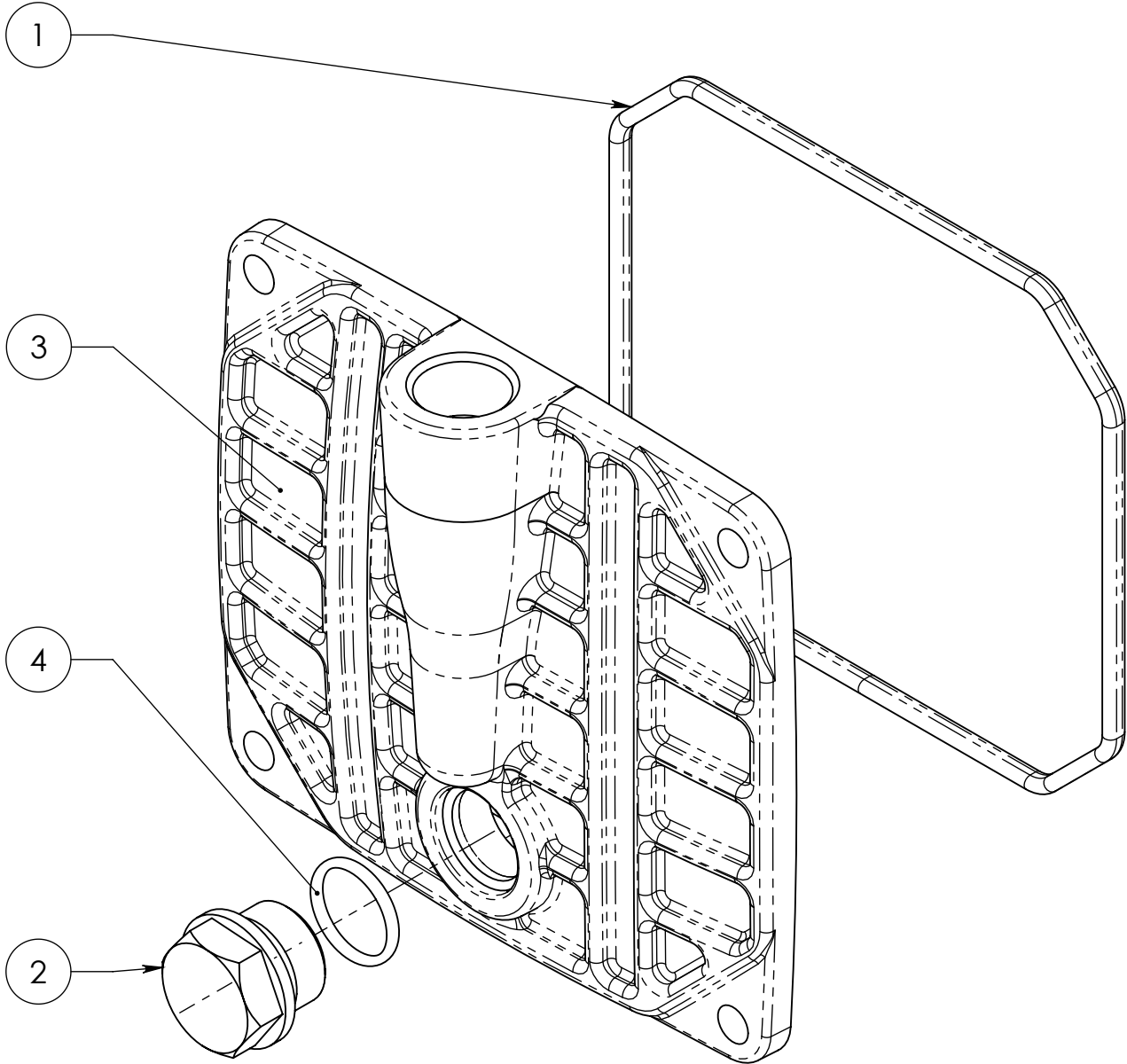
**P2.150.009.A**

*Spare parts P9.041.008*

Pos.	Q.Ty	Code	ITALIANO	ENGLISH	DEUTSCH	ESPAÑOL	FRANCAIS
1	1	P1.010.009	Asta	Pole	Pfosten	Asta	Tige
2	1	P1.013.002	Spina cilindrica ø10x20	Cylindrical pin ø10x20	Zylinder Stift ø10x20	Pasador cilindrico ø10x20	Goupille cylindrique ø10x20
3	1	P1.099.001	Biella PM	Connecting rod PM	Plenelstange PM	Biella PM	Bielle PM

# Cover PMD

## Coperchio PMD



**P2.012.004.D**

Pos.	Q.ty	Code	ITALIANO	ENGLISH	DEUTSCH	ESPAÑOL	FANCAIS
1	1	P1.006.006	OR PMD	O-ring PMD	O-Ring PMD	OR PMD	Joint torique PMD
2	1	P1.012.003	Tappo G 3/8" H18	Cap G 3/8" H18	Deckel G 3/8" H18	Tapón G 3/8" H18	Bouchon G 3/8" H18
3	1	P1.054.004	Coperchio "PM"	Cover "PM"	Deckel "PM"	Tapa "PM"	Couvercle "PM"
4	1	P4.005.007	Guarnizione OR 2056 14x1.78NBR 70Sh	Gasket OR 2056 14x1.78NBR 70Sh	Dichtung OR 2056 14x1.78NBR 70Sh	Guarnición OR 2056 14x1.78NBR 70Sh	Garniture OR 2056 14x1.78NBR 70Sh