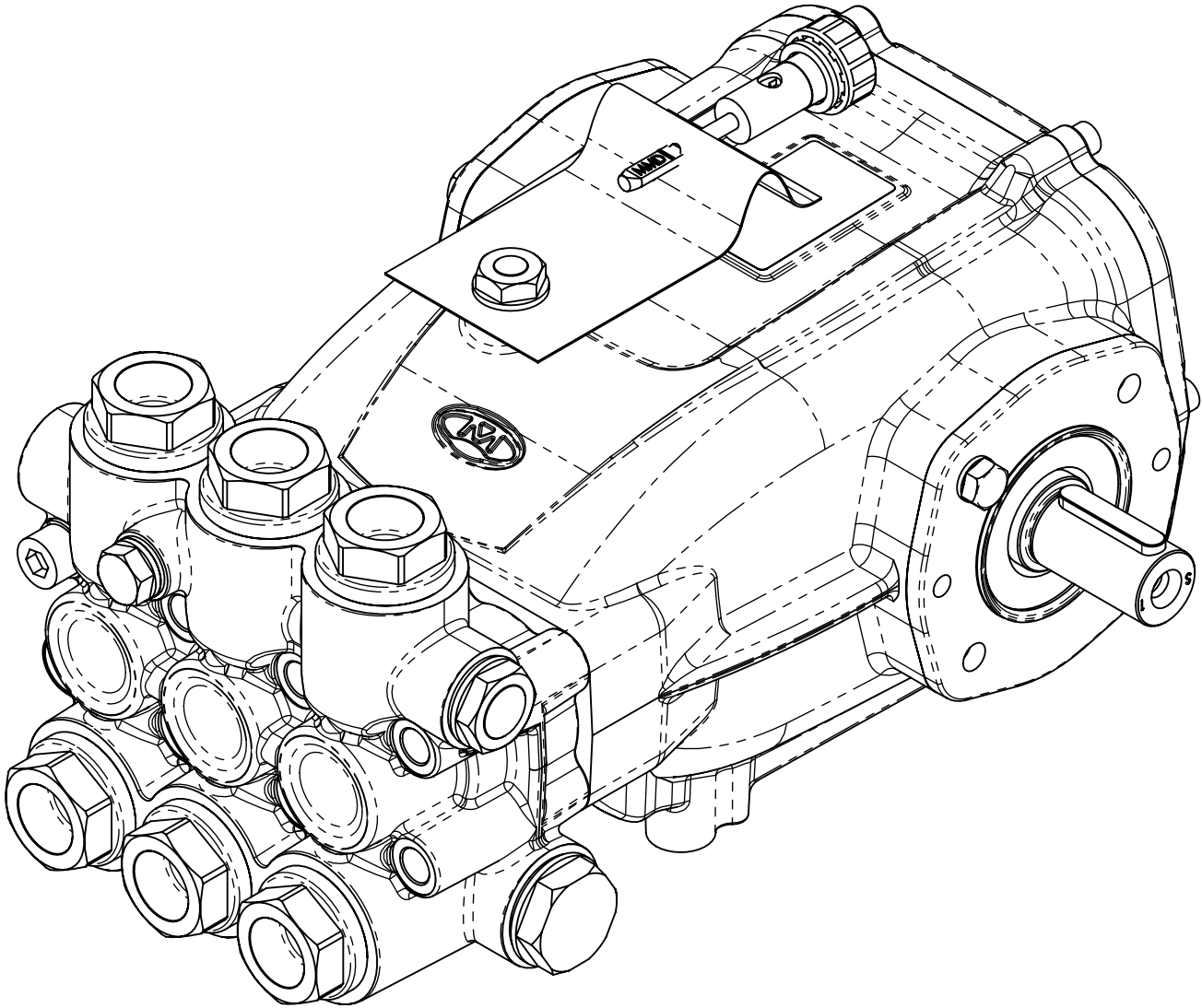


GM-1 $\varnothing 20$ - $\varnothing 22$

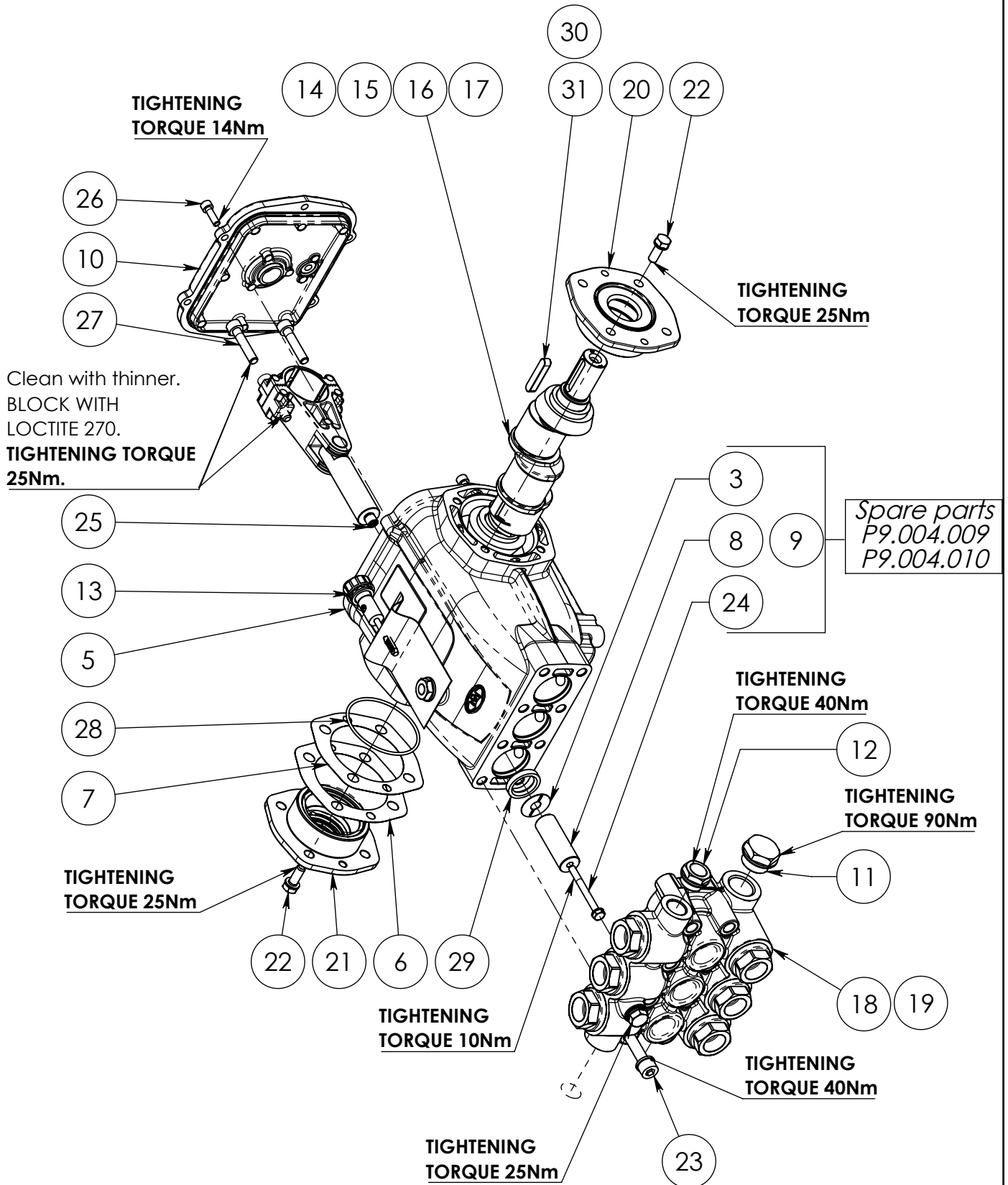


General table

Model	Pressure (Bar)	Pressure (Psi)	Flow Rate 1450 rpm (Lit/min)	Flow Rate 1740 rpm (Lit/min)	Flow Rate 1450 rpm (gpm)	Flow Rate 1740 rpm (gpm)	Round 50Hz (RPM)	Round 60Hz (RPM)	Power 50Hz (Hp)	Power 50Hz (Kw)	Power 60Hz (Hp)	Power 60Hz (Kw)
GM18300 (R-L)	300	4351.13	18.00	21.60	4.76	5.71	1450	1740	14.03	10.45	16.83	12.54
GM22300 (R-L)	300	4351.13	22.00	26.40	5.81	6.97	1450	1740	17.14	12.77	20.57	15.33
GM25300 (R-L)	300	4351.13	25.00	30.00	6.60	7.93	1450	1740	19.48	14.51	23.38	17.42
GM27300 (R-L)	300	4351.13	27.00	32.40	7.13	8.56	1450	1740	21.04	15.67	25.25	18.81
GM30250 (R-L)	250	3625.94	30.00	36.00	7.93	9.51	1450	1740	19.48	14.51	23.38	17.42
GM33250 (R-L)	250	3625.94	33.00	39.60	8.72	10.46	1450	1740	21.43	15.96	25.71	19.16

Exploded GM-1 $\varnothing 20$ - $\varnothing 22$

Esploso GM-1 $\varnothing 20$ - $\varnothing 22$

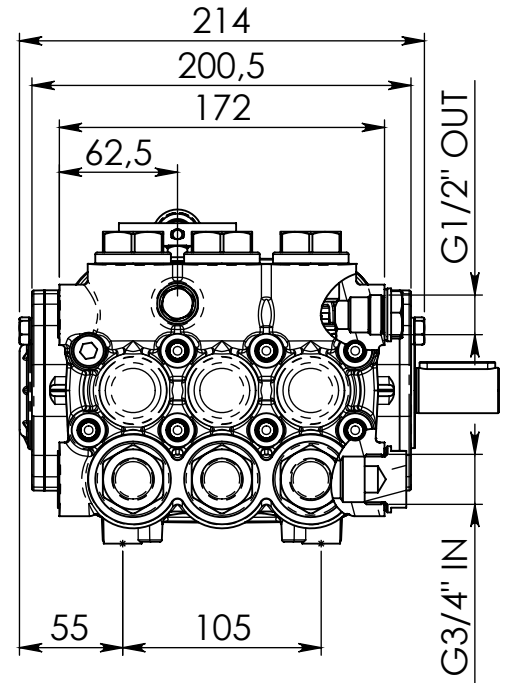
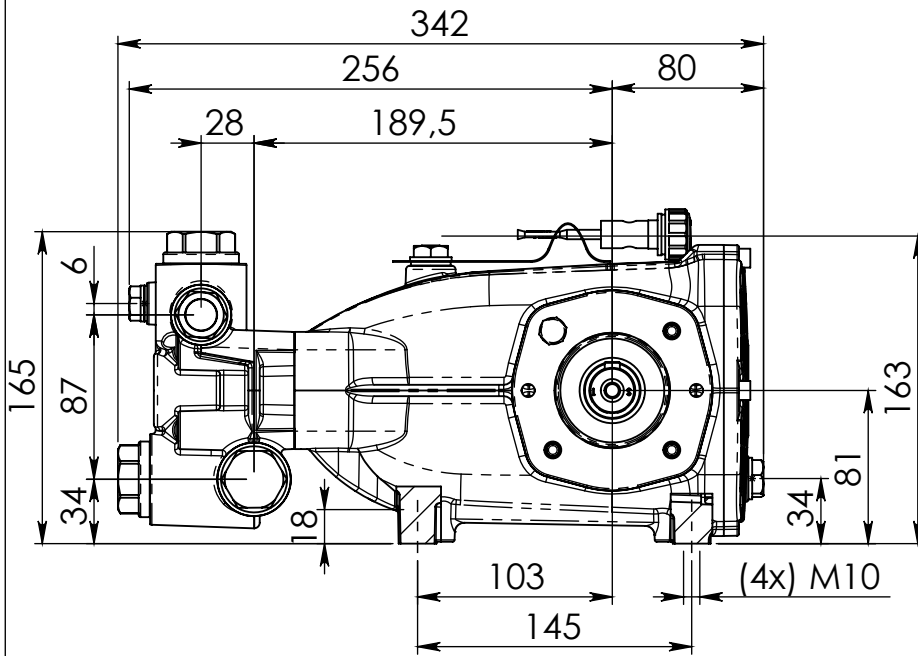




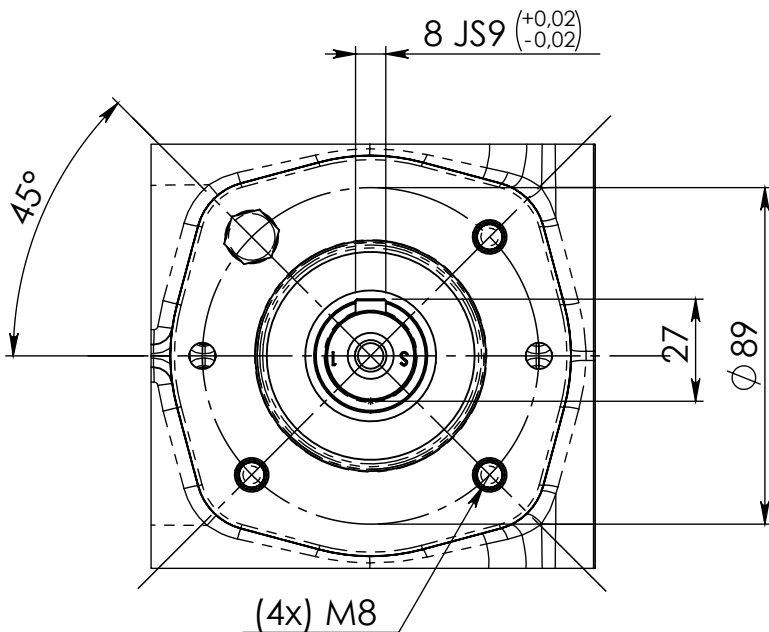
Pos.	GM 18300 (R-L) Q.TY GM 22300 (R-L) Q.TY GM 25300 (R-L) Q.TY GM 27300 (R-L) Q.TY GM 30250 (R-L) Q.TY GM 33250 (R-L) Q.TY							Code	ITALIANO	ENGLISH	DEUTSCH	ESPAÑOL	FRANCAIS
	1	1	1	1	1	1	1						
2	1	1	1	1	1	1	1	P0.020.004	Olio o Lubrificante GM/XM	Oil or Lubricants GM/XM	Öl oder Schmierstoffe GM/XM	Aceite o lubricante GM/XM	ÖlHuile ou lubrifiant GM/XM
3	3	3	3	3	3	3	3	P1.003.004	Rondella	Washer	Unterlegscheibe	Arandela	Rondelle
4	1	1	1	1	1	1	1	P1.012.052	Tappo	Cap	Deckel	Tapón	Bouchon
5	1	1	1	1	1	1	1	P1.020.004	Corpo Pompa GM1 XM-1	Pump Body GM1 XM-1	Pumpenkörper GM1 XM-1	Cuerpo de la bomba GM1 XM-1	Corps de pompe GM1 XM-1
6	1	1	1	1	1	1	1	P1.060.005	Distanziale 0,1mm	Spacer 0,1mm	Distanzstueck 0,1mm	Distanciador 0,1mm	Entretoise 0,1mm
7	1	1	1	1	1	1	1	P1.060.006	Distanziale sp. 0.2mm	Spacer sp. 0.2mm	Distanzstueck sp. 0.2mm	Distanciador sp. 0.2mm	Entretoise sp. 0.2mm
8	3	3	3	3	-	-	-	P1.071.009	Pistone ø20 GM-1	Piston ø20 GM-1	Kolben ø20 GM-1	Pistón ø20 GM-1	Piston ø20 GM-1
9	-	-	-	-	3	3	3	P1.071.010	Pistone ø22 GM-1	Piston ø22 GM-1	Kolben ø22 GM-1	Pistón ø22 GM-1	Piston ø22 GM-1
10	1	1	1	1	1	1	1	P2.012.005	Coperchio GM-1/XM-1	Cover GM-1/XM-1	Deckel GM-1/XM-1	Tapa GM-1/XM-1	Couvercle GM-1/XM-1
11	1	1	1	1	1	1	1	P2.013.025	Tappo 3/4" GAS	Cap 3/4" GAS	Deckel 3/4" GAS	Tapón 3/4" GAS	Bouchon 3/4" GAS
12	1	1	1	1	1	1	1	P2.013.026	Tappo 1/2" GAS	Cap 1/2" GAS	Deckel 1/2" GAS	Tapón 1/2" GAS	Bouchon 1/2" GAS
13	1	1	1	1	1	1	1	P2.013.037	Tappo MMD GM XM	Cap MMD GM XM	Deckel MMD GM XM	Tapón MMD GM XM	Bouchon MMD GM XM
14	1	-	-	-	-	-	-	P2.014.006	Albero ec. 7.16	Shaft ec. 7.16	Welle ec. 7.16	Eje ec. 7.16	Arbre ec. 7.16
15	-	1	-	-	-	-	-	P2.014.007	Albero ec. 8.5	Shaft ec. 8.5	Welle ec. 8.5	Eje ec. 8.5	Arbre ec. 8.5
16	-	-	1	-	1	-	-	P2.014.008	Albero ec. 9.9	Shaft ec. 9.9	Welle ec. 9.9	Eje ec. 9.9	Arbre ec. 9.9
17	-	-	-	1	-	1	-	P2.014.009	Albero ec. 10.7	Shaft ec. 10.7	Welle ec. 10.7	Eje ec. 10.7	Arbre ec. 10.7
18	1	1	1	1	-	-	-	P2.035.014	Testata pompa ø20 GM-1	Pump head ø20 GM-1	Pumpekopf ø20 GM-1	Cabeza bomba ø20 GM-1	Tete de pompe ø20 GM-1
19	-	-	-	-	1	1	1	P2.035.015	Testata pompa ø22 GM-1	Pump head ø22 GM-1	Pumpekopf ø22 GM-1	Cabeza bomba ø22 GM-1	Tete de pompe ø22 GM-1
20	1	1	1	1	1	1	1	P2.060.003	Flangia P.d.F. GM-1 - XM-1	Flange P.T.O. GM-1 - XM-1	Flansch PTO GM-1 - XM-1	Brida toma de fuerza GM-1 - XM-1	Bride prise de force GM-1 - XM-1
21	1	1	1	1	1	1	1	P2.060.004	Flangia chiusa GM-1 - XM-1	Flange closed GM-1 - XM-1	Flansch geschlossen GM-1 - XM-1	Brida cerrada GM-1 - XM-1	Bride fermée GM-1 - XM-1
22	8	8	8	8	8	8	8	P2.119.002	Vite M8X22	Screw M8X22	Schrauben M8X22	Tornillo M8X22	Vis M8X22
23	8	8	8	8	8	8	8	P2.119.004	Vite M10X80	Screw M10X80	Schrauben M10X80	Tornillo M10X80	Vis M10X80
24	3	3	3	3	3	3	3	P2.119.005	Vite M6X60	Screw M6X60	Schrauben M6X60	Tornillo M6X60	Vis M6X60
25	3	3	3	3	3	3	3	P2.150.007	Biella GM-1 / XM-1	Connecting rod GM-1 / XM-1	Plenelstange GM-1 / XM-1	Biela GM-1 / XM-1	Bielle GM-1 / XM-1
26	6	6	6	6	6	6	6	P4.002.010	Vite M6x20 UNI 5931-67	Screw M6x20 UNI 5931-67	Schrauben M6x20 UNI 5931-67	Tornillo M6x20 UNI 5931-67	Vis M6x20 UNI 5931-67
27	6	6	6	6	6	6	6	P4.002.017	Vite TCEI M8x40 UNI5931-67	Screw TCEI M8x40 UNI5931-67	Schrauben TCEI M8x40 UNI5931-67	Tornillo TCEI M8x40 UNI5931-67	Vis TCEI M8x40 UNI5931-67
28	1	1	1	1	1	1	1	P4.005.041	Guarnizione OR	Gasket OR	Dichtung OR	Guarnición OR	Garniture OR
29	3	3	3	3	3	3	3	P4.015.004	Anello D32-d22x5.5	Ring D32-d22x5.5	Ring D32-d22x5.5	Anillo D32-d22x5.5	Bague D32-d22x5.5
30	-	-	-	1	-	1	-	P4.021.002	Chiavetta 8x7x50 UNI6604-A	Key 8x7x50 UNI6604-A	Keil 8x7x50 UNI6604-A	Chaveta 8x7x50 UNI6604-A	Clavette 8x7x50 UNI6604-A
31	1	1	1	-	1	-	-	P4.021.003	Chiavetta 8x7x40 UNI6604-A	Key 8x7x40 UNI6604-A	Keil 8x7x40 UNI6604-A	Chaveta 8x7x40 UNI6604-A	Clavette 8x7x40 UNI6604-A

GM-1 $\varnothing 20$ - $\varnothing 22$ Drawing

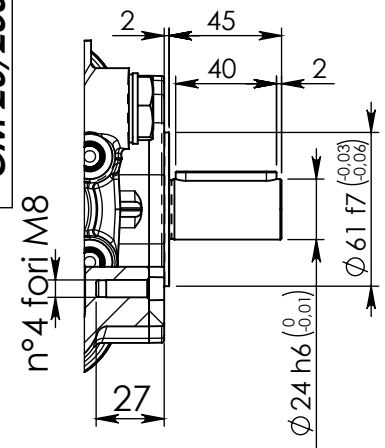
Disegno GM-1 $\varnothing 20$ - $\varnothing 22$



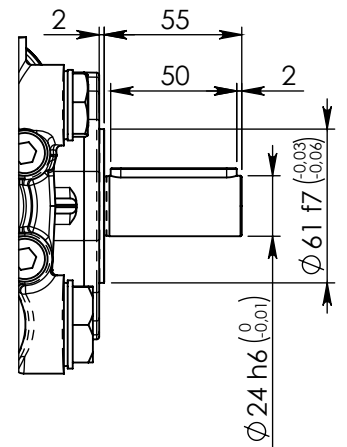
Detailed flange view Vista dettagliata flangia



-GM 18/300
-GM 22/300
-GM 25/300
-GM 20/250



-GM 27/300
-GM 33/250



Spare parts GM-1 ø20

Ricambi GM-1 ø20



Code	Q.Ty	ITALIANO	ENGLISH	DEUTSCH	ESPAÑOL	FRANCAIS
P2.003.007	6	Gruppo valvola ø20 - ø22 GM-1	Valves Group ø20 - ø22 GM-1	Ventil Gruppe ø20 - ø22 GM-1	Groupe Vannes ø20 - ø22 GM-1	Grupo Valvulas ø20 - ø22 GM-1
P4.005.014	6	NBR-3.53X25.8	O-ring ø3.15x25.80	O-Ring ø3.15x25.80	OR ø3.15x25.80	Joint torique ø3.15x25.80
P4.005.015	6	OR 3087	O-ring 3087	O-Ring 3087	OR 3087	Joint torique 3087

P9.001.007
VALVOLA COMPLETA POMPA GM-1 Ø20 - Ø22 - KIT VALVES



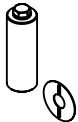
Code	Q.Ty	ITALIANO	ENGLISH	DEUTSCH	ESPAÑOL	FRANCAIS
P4.005.017	3	OR 1.78x37.82 GM	O-ring 1.78x37.82 GM	O-Ring 1.78x37.82 GM	OR 1.78x37.82 GM	Joint torique 1.78x37.82 GM
P4.100.002	3	Tenuta pistone posteriore ø20xø26x8	Piston seal back ø20xø26x8	Kolbendichtung zurück ø20xø26x8	Piston sellado posterior ø20xø26x8	Piston joint arrière ø20xø26x8
P4.100.006	3	Tenuta pistone anteriore ø20xø35x10	Front piston seal ø20xø35x10	Front Kolbendichtung ø20xø35x10	Junta del pistón delantero ø20xø35x10	Joint de piston avant ø20xø35x10

P9.003.005
GUARNIZIONE PISTONE ø20 POMPA GM-1 - KIT PLUNGER SEALS



Code	Q.Ty	ITALIANO	ENGLISH	DEUTSCH	ESPAÑOL	FRANCAIS
P1.024.033	1	Diffusore ø20 (GM-1)	Diffusor ø20 (GM-1)	Diffusor ø20 (GM-1)	Difusor ø20 (GM-1)	Diffuseur ø20 (GM-1)
P2.118.006	1	Pressore GM-1 ø20	Pressure Ring GM-1 ø20	Bague de pression GM-1 ø20	Anillo de presión GM-1 ø20	Bague de pression GM-1 ø20
P4.100.006	1	Tenuta pistone anteriore ø20xø35x10	Front piston seal ø20xø35x10	Front Kolbendichtung ø20xø35x10	Junta del pistón delantero ø20xø35x10	Joint de piston avant ø20xø35x10

P9.003.019
GUARNIZIONE PISTONE ø20 POMPA GM-1 PACCO COMPLETO - KIT COMPLETE SEALS



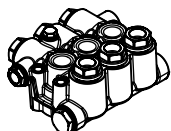
Code	Q.Ty	ITALIANO	ENGLISH	DEUTSCH	ESPAÑOL	FRANCAIS
P1.003.004	1	Rondella	Washer	Unterlegscheibe	Arandela	Rondelle
P1.071.009	1	Pistone ø20 GM-1	Piston ø20 GM-1	Kolben ø20 GM-1	Pistón ø20 GM-1	Piston ø20 GM-1
P2.119.005	1	Vite M6X60	Screw M6X60	Schrauben M6X60	Tornillo M6X60	Vis M6X60

P9.004.009
PISTONE ø20 POMPA GM-1 - KIT CERAMIC PISTON



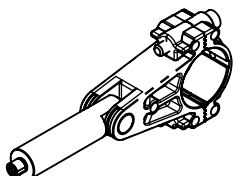
Code	Q.Ty	ITALIANO	ENGLISH	DEUTSCH	ESPAÑOL	FRANCAIS
P4.015.004	3	Anello D32-d22x5.5	Ring D32-d22x5.5	Ring D32-d22x5.5	Anillo D32-d22x5.5	Bague D32-d22x5.5

P9.039.002
ANELLI TENUTA OLIO ASTA POMPA GM-XM - KIT OIL SEALS



Code	Q.Ty	ITALIANO	ENGLISH	DEUTSCH	ESPAÑOL	FRANCAIS
P2.013.025	1	Tappo 3/4" GAS	Cap 3/4" GAS	Deckel 3/4" GAS	Tapón 3/4" GAS	Bouchon 3/4" GAS
P2.013.026	1	Tappo 1/2" GAS	Cap 1/2" GAS	Deckel 1/2" GAS	Tapón 1/2" GAS	Bouchon 1/2" GAS
P2.035.014	1	Testata pompa ø20 GM-1	Pump head ø20 GM-1	Pumpekopf ø20 GM-1	Cabeza bomba ø20 GM-1	Tete de pompe ø20 GM-1
P4.043.001	1	Protezione ø20	Protection ø20	Scuhtz ø20	Protección ø20	Protection ø20
P4.043.003	1	Protezione ø26.5	Protection ø26.5	Scuhtz ø26.5	Protección ø26.5	Protection ø26.5

P9.040.009
TESTATA COMPLETA PISTONE ø20 POMPA GM-1 - COMPLETE HEAD OF THE PUMP



Code	Q.Ty	ITALIANO	ENGLISH	DEUTSCH	ESPAÑOL	FRANCAIS
P2.150.007	1	Biella GM-1 / XM-1	Connecting rod GM-1 / XM-1	Plenelstange GM-1 / XM-1	Biela GM-1 / XM-1	Bielle GM-1 / XM-1
P4.002.017	2	Vite TCEI M8x40 UNI5931-67	Screw TCEI M8x40 UNI5931-67	Schrauben TCEI M8x40 UNI5931-67	Tornillo TCEI M8x40 UNI5931-67	Vis TCEI M8x40 UNI5931-67

P9.041.005
BIELLA -ASTA POMPA GM-1 - XM-1 - PREASSEMBLED CONNECTING ROD

Spare parts GM-1 ø22

Ricambi GM-1 ø22



Code	Q.Ty	ITALIANO	ENGLISH	DEUTSCH	ESPAÑOL	FRANCAIS
P2.003.007	6	Gruppo valvola ø20 - ø22 GM-1	Valves Group ø20 - ø22 GM-1	Ventil Gruppe ø20 - ø22 GM-1	Groupe Vannes ø20 - ø22 GM-1	Grupo Valvulas ø20 - ø22 GM-1
P4.005.014	6	NBR-3.53X25.8	O-ring ø3.15x25.80	O-Ring ø3.15x25.80	OR ø3.15x25.80	Joint torique ø3.15x25.80
P4.005.015	6	OR 3087	O-ring 3087	O-Ring 3087	OR 3087	Joint torique 3087

P9.001.007
VALVOLA COMPLETA POMPA GM-1 Ø20 - Ø22 - KIT VALVES



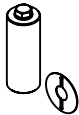
Code	Q.Ty	ITALIANO	ENGLISH	DEUTSCH	ESPAÑOL	FRANCAIS
P4.100.007	3	Tenuta pistone anteriore ø22xø35x10	Front piston seal ø22xø35x10	Front Kolbendichtung ø22xø35x10	Junta del pistón delantero ø22xø35x10	Joint de piston avant ø22xø35x10
P4.100.012	3	Tenuta pistone posteriore ø22xø30x8	Piston seal back ø22xø30x8	Kolbendichtung zurück ø22xø30x8	Piston sellado posterior ø22xø30x8	Piston joint arrière ø22xø30x8
P4.005.017	3	OR 1.78x37.82 GM	O-ring 1.78x37.82 GM	O-Ring 1.78x37.82 GM	OR 1.78x37.82 GM	Joint torique 1.78x37.82 GM

P9.003.007
GUARNIZIONE PISTONE ø22 POMPA GM-1 - KIT PLUNGER SEALS



Code	Q.Ty	ITALIANO	ENGLISH	DEUTSCH	ESPAÑOL	FRANCAIS
P1.024.032	1	Diffusore ø22 GM-1	Diffusor ø22 GM-1	Diffusor ø22 GM-1	Difusor ø22 GM-1	Diffuseur ø22 GM-1
P4.100.007	1	Tenuta pistone anteriore ø22xø35x10	Front piston seal ø22xø35x10	Front Kolbendichtung ø22xø35x10	Junta del pistón delantero ø22xø35x10	Joint de piston avant ø22xø35x10
P2.118.009	1	Pressore GM-1 ø22	Pressure Ring GM-1 ø22	Bague de pression GM-1 ø22	Anillo de presión GM-1 ø22	Bague de pression GM-1 ø22

P9.003.020
GUARNIZIONE PISTONE ø22 POMPA GM-1 PACCO COMPLETO - KIT COMPLETE SEALS



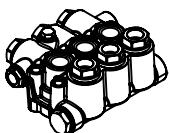
Code	Q.Ty	ITALIANO	ENGLISH	DEUTSCH	ESPAÑOL	FRANCAIS
P1.003.004	1	Rondella	Washer	Unterlegscheibe	Arandela	Rondelle
P1.071.010	1	Pistone ø22 GM-1	Piston ø22 GM-1	Kolben ø22 GM-1	Pistón ø22 GM-1	Piston ø22 GM-1
P2.119.005	1	Vite M6X60	Screw M6X60	Schrauben M6X60	Tornillo M6X60	Vis M6X60

P9.004.010
PISTONE ø22 POMPA GM-1 - KIT CERAMIC PISTON



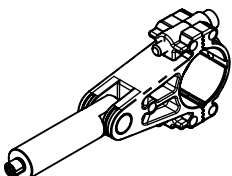
Code	Q.Ty	ITALIANO	ENGLISH	DEUTSCH	ESPAÑOL	FRANCAIS
P4.015.004	3	Anello D32-d22x5.5	Ring D32-d22x5.5	Ring D32-d22x5.5	Anillo D32-d22x5.5	Bague D32-d22x5.5

P9.039.002
ANELLI TENUTA OLIO ASTA POMPA GM-XM - KIT OIL SEALS



Code	Q.Ty	ITALIANO	ENGLISH	DEUTSCH	ESPAÑOL	FRANCAIS
P2.013.025	1	Tappo 3/4" GAS	Cap 3/4" GAS	Deckel 3/4" GAS	Tapón 3/4" GAS	Bouchon 3/4" GAS
P2.013.026	1	Tappo 1/2" GAS	Cap 1/2" GAS	Deckel 1/2" GAS	Tapón 1/2" GAS	Bouchon 1/2" GAS
P2.035.015	1	Testata pompa ø22 GM-1	Pump head ø22 GM-1	Pumpekopf ø22 GM-1	Cabeza bomba ø22 GM-1	Tete de pompe ø22 GM-1
P4.043.001	1	Protezione ø20	Protection ø20	Scuhtz ø20	Protección ø20	Protection ø20
P4.043.003	1	Protezione ø26.5	Protection ø26.5	Scuhtz ø26.5	Protección ø26.5	Protection ø26.5

P9.040.010
TESTATA COMPLETA PISTONE ø22 POMPA GM-1 - COMPLETE HEAD OF THE PUMP



Code	Q.Ty	ITALIANO	ENGLISH	DEUTSCH	ESPAÑOL	FRANCAIS
P2.150.007	1	Biella GM-1 / XM-1	Connecting rod GM-1 / XM-1	Plenelstange GM-1 / XM-1	Biela GM-1 / XM-1	Bielle GM-1 / XM-1
P4.002.017	2	Vite TCEI M8x40 UNI5931-67	Screw TCEI M8x40 UNI5931-67	Schrauben TCEI M8x40 UNI5931-67	Tornillo TCEI M8x40 UNI5931-67	Vis TCEI M8x40 UNI5931-67

P9.041.005
BIELLA -ASTA POMPA GM-1 - XM-1 - PREASSEMBLED CONNECTING ROD

Pump head ø20 GM-1

Testata pompa ø20 GM-1



Use LOCTITE 270.
TIGHTENING TORQUE 40Nm.

Spare parts
P9.003.005

Spare parts
P9.001.007

TIGHTENING TORQUE 25Nm

Use LOCTITE 270.
TIGHTENING TORQUE 40Nm.

Spare parts
P9.001.007

Spare parts
P9.003.019

P2.035.014 .C

Spare parts P9.040.009

Pos.	Q.Ty	Code	ITALIANO	ENGLISH	DEUTSCH	ESPAÑOL	FRANCAIS
1	1	P1.012.002	Tappo 1/4"Gas	Cap 1/4"Gas	Deckel 1/4"Gas	Tapón 1/4"Gas	Bouchon 1/4"Gas
2	3	P1.024.033	Diffusore ø20 (GM-1)	Diffusor ø20 (GM-1)	Diffusor ø20 (GM-1)	Difusor ø20 (GM-1)	Diffuseur ø20 (GM-1)
3	1	P1.043.012	Testata pompa ø20-ø22 GM-1	Pump head ø20-ø22 GM-1	Pumpekopf ø20-ø22 GM-1	Cabeza bomba ø20-ø22 GM-1	Tete de pompe ø20-ø22 GM-1
4	6	P2.003.007	Gruppo valvola ø20 - ø22 GM-1	Valves Group ø20 - ø22 GM-1	Ventil Gruppe ø20 - ø22 GM-1	Groupe Vannes ø20 - ø22 GM-1	Grupo Valvulas ø20 - ø22 GM-1
5	6	P2.013.009	Tappo M30x1.5 + OR GM-1	Cap M30x1.5 + OR GM-1	Deckel M30x1.5 + OR GM-1	Tapón M30x1.5 + OR GM-1	Bouchon M30x1.5 + OR GM-1
6	3	P2.118.006	Pressore GM-1 ø20	Pressure Ring GM-1 ø20	Bague de pression GM-1 ø20	Anillo de presión GM-1 ø20	Bague de pression GM-1 ø20
6.1	1	P4.100.002	Tenuta pistone posteriore ø20xø28x8	Piston seal back ø20xø28x8	Kolbendichtung zuruck ø20xø28x8	Piston sellado posterior ø20xø28x8	Piston joint arriere ø20xø28x8
6.2	1	P4.005.017	OR 1.78x37.82 GM	O-ring 1.78x37.82 GM	O-Ring 1.78x37.82 GM	OR 1.78x37.82 GM	Joint torique 1.78x37.82 GM
7	6	P4.005.015	OR 3087	O-ring 3087	O-Ring 3087	OR 3087	Joint torique 3087
8	1	P4.008.007	Rondella Rame 1/4 Ø13x19x1.5	Copper washer 1/4 Ø13x19x1.5	Kupferunterlegsscheibe 1/4 Ø13x19x1.5	Arandela de cobre 1/4 Ø13x19x1.5	Rondelle cuivre 1/4 Ø13x19x1.5
9	3	P4.100.006	Tenuta pistone anteriore ø20xø35x10	Front piston seal ø20xø35x10	Front Kolbendichtung ø20xø35x10	Junta del pistón delantero ø20xø35x10	Joint de piston avant ø20xø35x10

Pump head ø22 GM-1

Testata pompa ø22 GM-1



Use LOCTITE 270.
TIGHTENING TORQUE 40Nm.

Spare parts
P9.003.007

Spare parts
P9.001.007

TIGHTENING TORQUE 25Nm

1

5

Use LOCTITE 270.
TIGHTENING TORQUE 40Nm.

Spare parts
P9.001.007

9 6.1 6.2

9 2 6

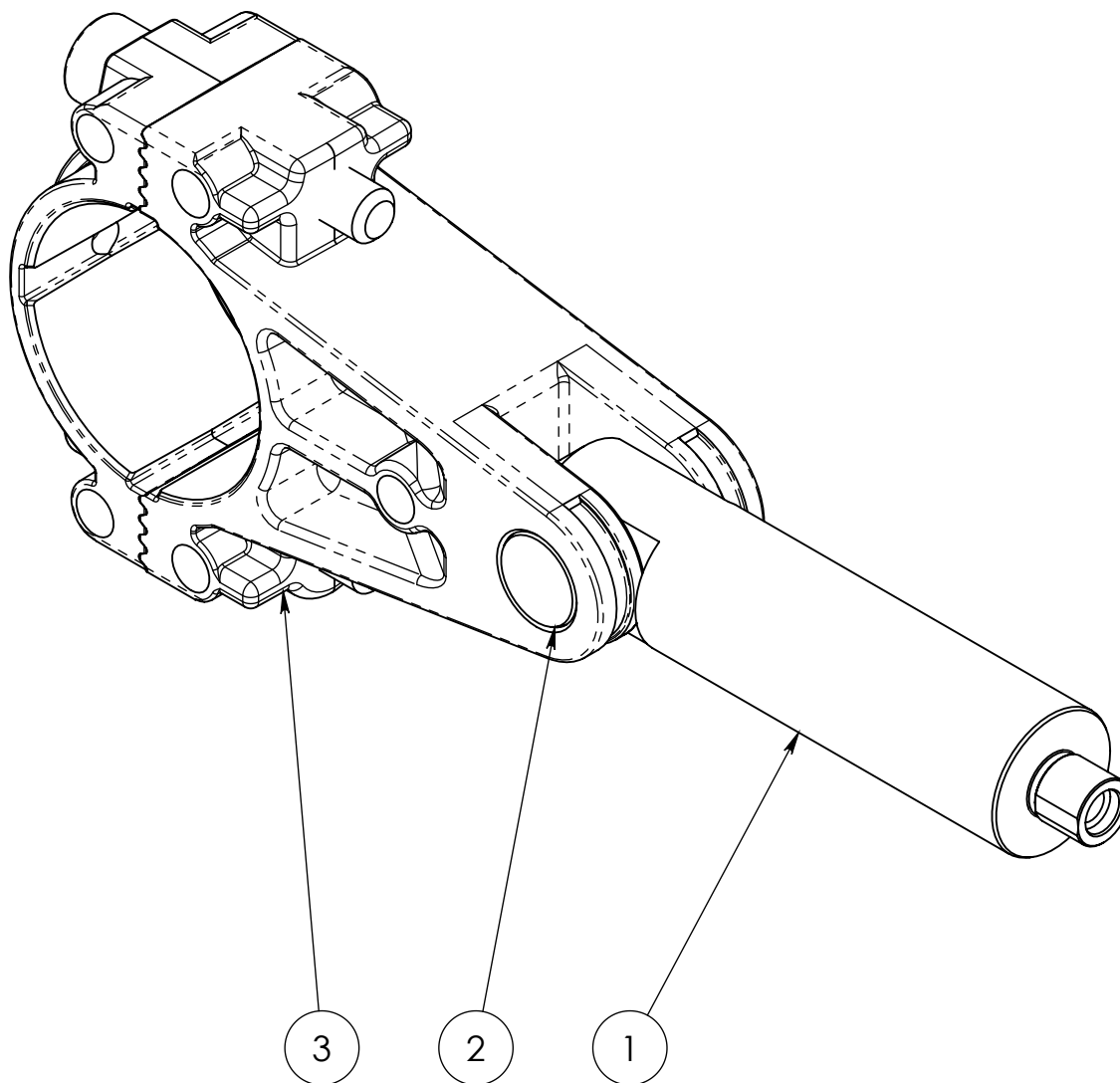
Spare parts
P9.003.020

P2.035.015.C
Spare parts P9.040.010

Pos.	Q.Ty	Code	ITALIANO	ENGLISH	DEUTSCH	ESPAÑOL	FRANCAIS
1	1	P1.012.002	Tappo 1/4"Gas	Cap 1/4"Gas	Deckel 1/4"Gas	Tapón 1/4"Gas	Bouchon 1/4"Gas
2	3	P1.024.032	Diffusore ø22 GM-1	Diffusor ø22 GM-1	Diffusor ø22 GM-1	Difusor ø22 GM-1	Diffuseur ø22 GM-1
3	1	P1.043.012	Testata pompa ø20-ø22 GM-1	Pump head ø20-ø22 GM-1	Pumpekopf ø20-ø22 GM-1	Cabeza bomba ø20-ø22 GM-1	Tete de pompe ø20-ø22 GM-1
4	6	P2.003.007	Gruppo valvola ø20 - ø22 GM-1	Valves Group ø20 - ø22 GM-1	Ventil Gruppe ø20 - ø22 GM-1	Groupe Vannes ø20 - ø22 GM-1	Grupo Valvulas ø20 - ø22 GM-1
5	6	P2.013.009	Tappo M30x1.5 + OR GM-1	Cap M30x1.5 + OR GM-1	Deckel M30x1.5 + OR GM-1	Tapón M30x1.5 + OR GM-1	Bouchon M30x1.5 + OR GM-1
6	3	P2.118.009	Pressore GM-1 ø22	Pressure Ring GM-1 ø22	Bague de pression GM-1 ø22	Anillo de presión GM-1 ø22	Bague de pression GM-1 ø22
6.1	1	P4.100.012	Tenuta pistone posteriore ø22xø30x8	Piston seal beack ø22xø30x8	Kolbendichtung zuruck ø22xø30x8	Piston sellado posterior ø22xø30x8	Piston joint arriere ø22xø30x8
6.2	1	P4.005.017	OR 1.78x37.82 GM	O-ring 1.78x37.82 GM	O-Ring 1.78x37.82 GM	OR 1.78x37.82 GM	Joint torique 1.78x37.82 GM
7	6	P4.005.015	OR 3087	O-ring 3087	O-Ring 3087	OR 3087	Joint torique 3087
8	1	P4.008.007	Rondella Rame 1/4 Ø13x19x1.5	Copper washer 1/4 Ø13x19x1.5	Kupferunterlegsscheibe 1/4 Ø13x19x1.5	Arandela de cobre 1/4 Ø13x19x1.5	Rondelle cuivre 1/4 Ø13x19x1.5
9	3	P4.100.007	Tenuta pistone anteriore ø22xø35x10	Front piston seal ø22xø35x10	Front Kolbendichtung ø22xø35x10	Junta del pistón delantero ø22xø35x10	Joint de piston avant ø22xø35x10

Connecting rod GM-1 / XM-1

Biella GM-1 / XM-1



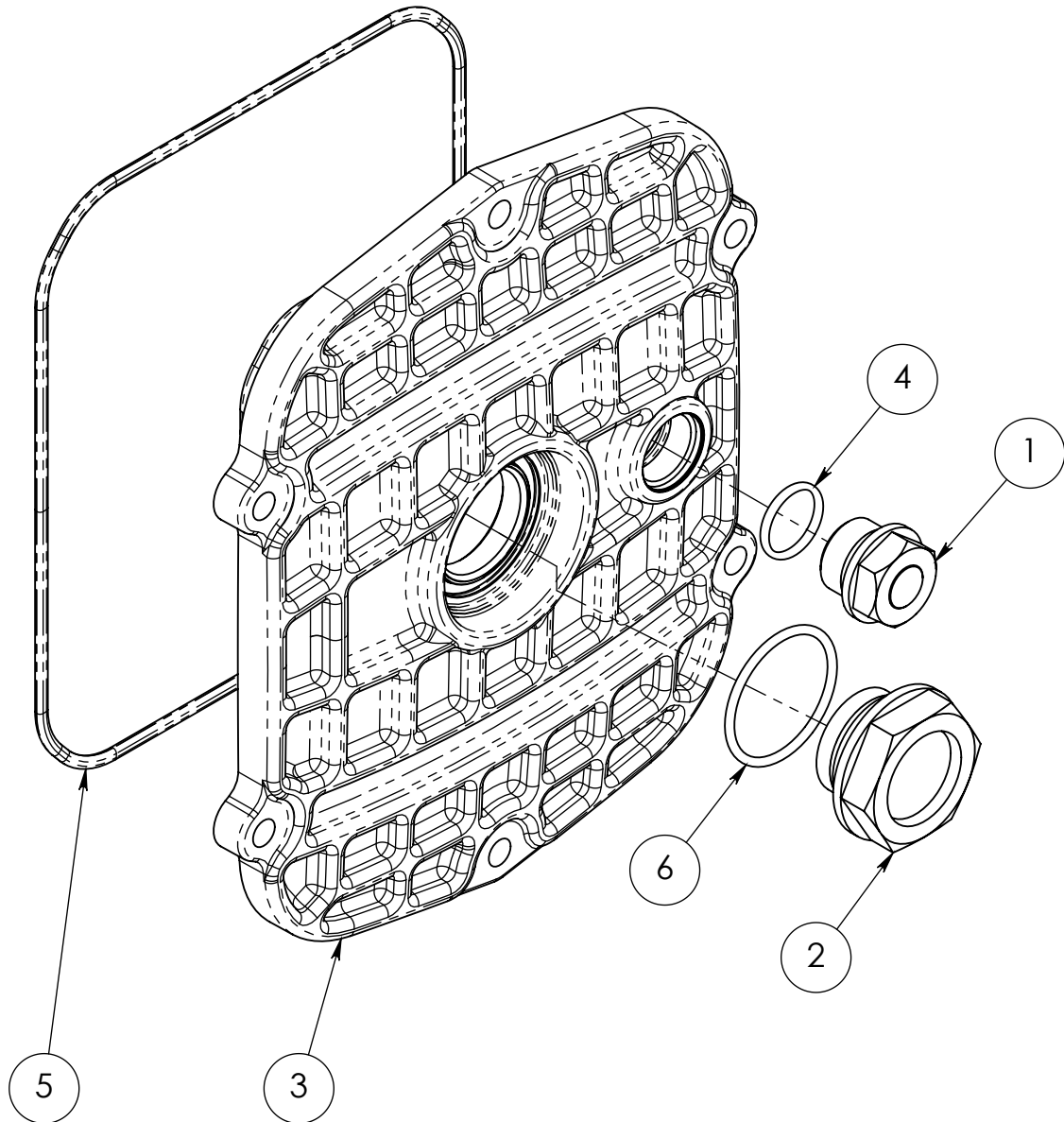
P2.150.007.B

Spare parts P9.041.005

Pos.	Q.Ty	Code	ITALIANO	ENGLISH	DEUTSCH	ESPAÑOL	FRANCAIS
1	1	P1.010.007	Asta GM-1	Pole GM-1	Pfosten GM-1	Asta GM-1	Tige GM-1
2	1	P1.013.003	Spina cilindrica	Cylindrical pin	Zylinder Stiff	Pasador cilindrico	Goupille cylindrique
3	1	P1.099.010	Biella GM-1 / XM-1	Connecting rod GM-1 / XM-1	Plenelstange GM-1 / XM-1	Biela GM-1 / XM-1	Bielle GM-1 / XM-1

Cover GM-1/XM-1

Coperchio GM-1/XM-1



P2.012.005.E

Pos.	Q.Ty	Code	ITALIANO	ENGLISH	DEUTSCH	ESPAÑOL	FRANCAIS
1	1	P1.012.003	Tappo G 3/8" H18	Cap G 3/8" H18	Deckel G 3/8" H18	Tapón G 3/8" H18	Bouchon G 3/8" H18
2	1	P1.012.015	Tappo G3/4	Cap G3/4	Deckel G3/4	Tapón G3/4	Bouchon G3/4
3	1	P1.054.011	Coperchio	Cover	Deckel	Tapa	Couvercle
4	1	P4.005.007	Guarnizione OR 2056 14x1.78NBR 70Sh	Gasket OR 2056 14x1.78NBR 70Sh	Dichtung OR 2056 14x1.78NBR 70Sh	Guarnición OR 2056 14x1.78NBR 70Sh	Garniture OR 2056 14x1.78NBR 70Sh
5	1	P4.005.020	OR ø2.62x152.07 NBR 70sh	O-ring ø2.62x152.07 NBR 70sh	O-Ring ø2.62x152.07 NBR 70sh	OR ø2.62x152.07 NBR 70sh	Joint torique ø2.62x152.07 NBR 70sh
6	1	P4.005.030	OR ORM0285-20 (NBR)	O-ring ORM0285-20 (NBR)	O-Ring ORM0285-20 (NBR)	OR ORM0285-20 (NBR)	Joint torique ORM0285-20 (NBR)