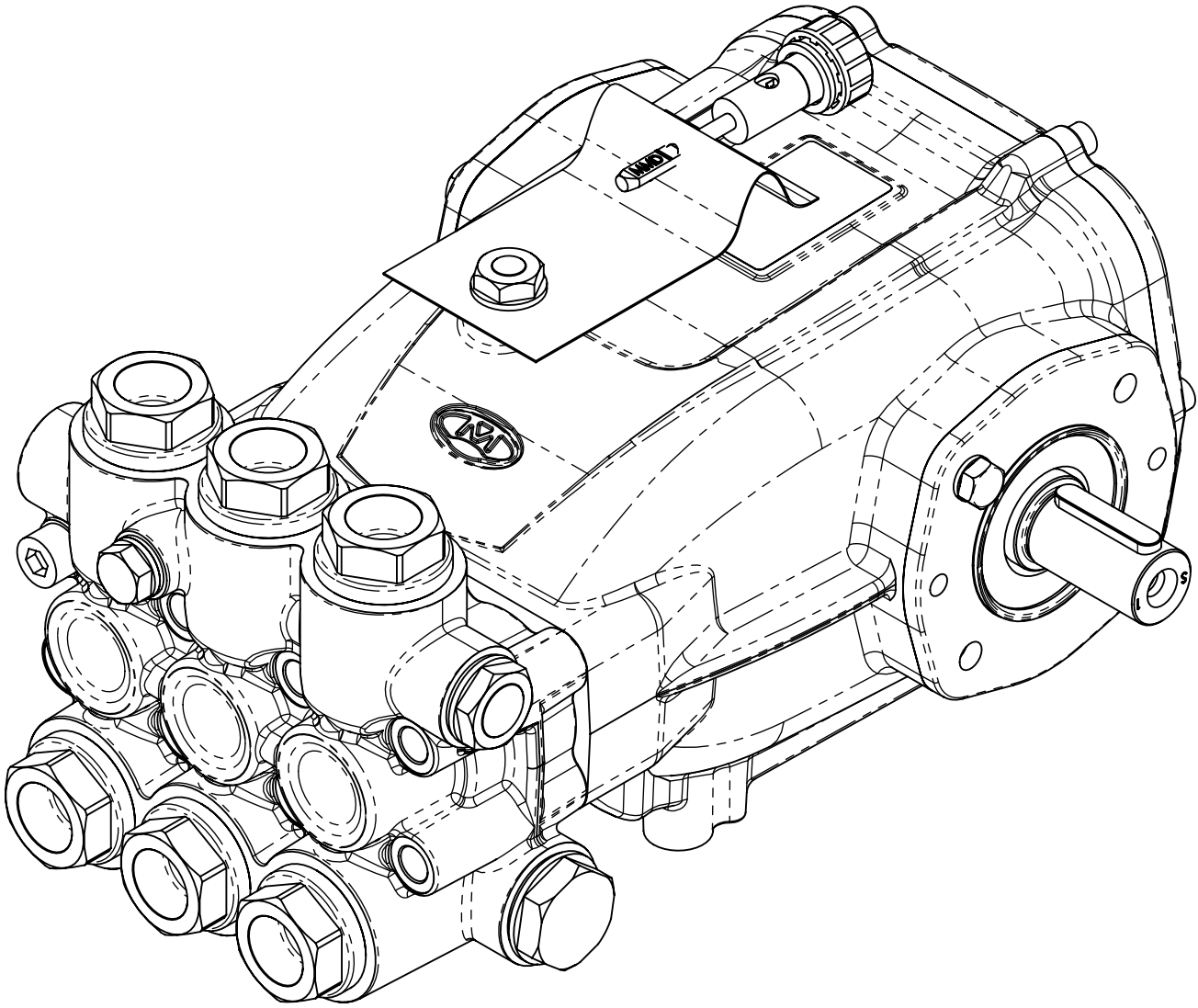


# TGM $\emptyset$ 20- $\emptyset$ 22

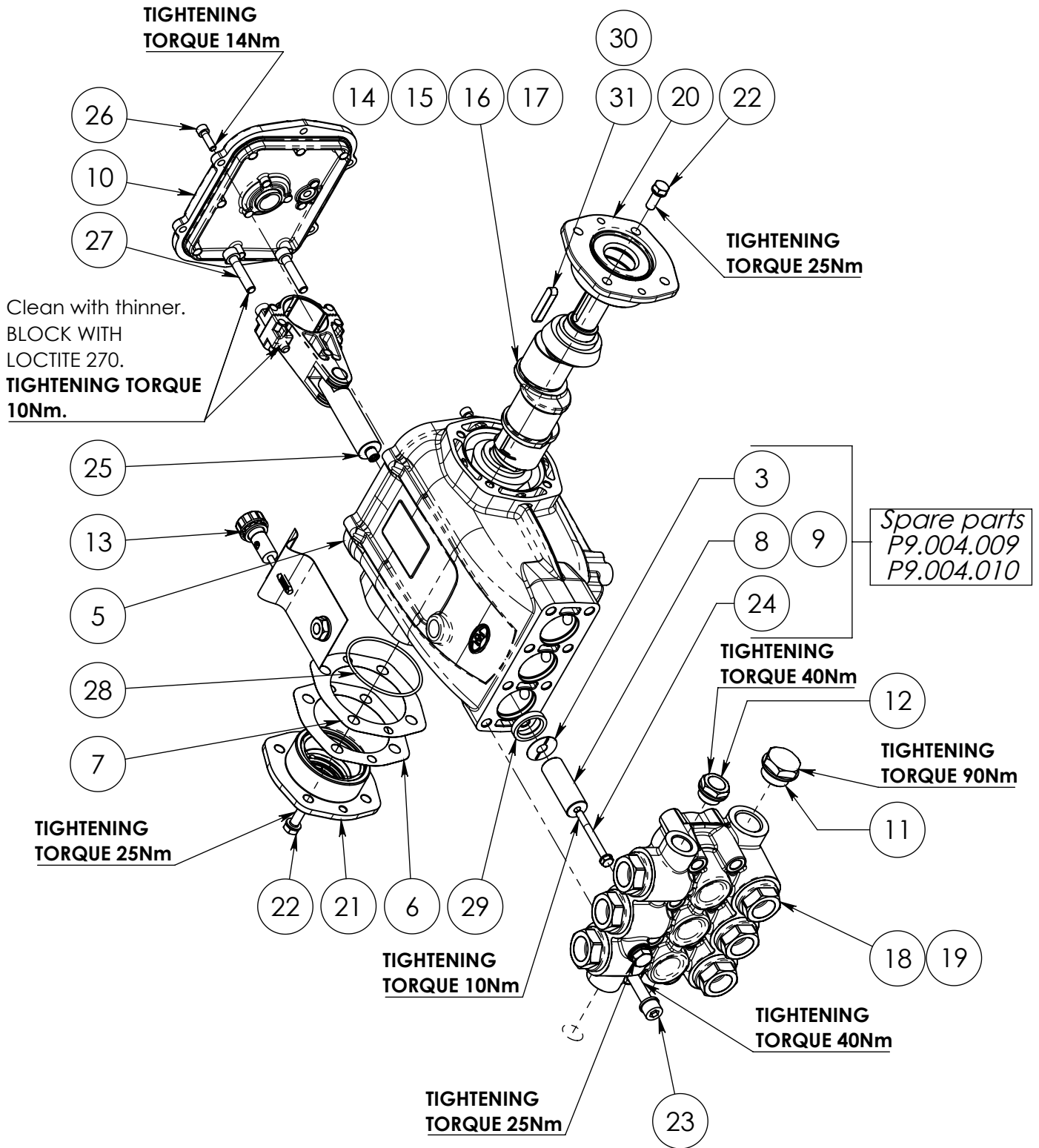


General table

Model	Pressure (Bar)	Pressure (Psi)	Flow Rate 1450 rpm (Lit/min)	Flow Rate 1740 rpm (Lit/min)	Flow Rate 1450 rpm (gpm)	Flow Rate 1740 rpm (gpm)	Round 50Hz (RPM)	Round 60Hz (RPM)	Power 50Hz (Hp)	Power 50Hz (Kw)	Power 60Hz (Hp)	Power 60Hz (Kw)
<b>TGM18200 (R-L)</b>	200	2900	18.00	21.60	4.76	5.71	1450	1740	9.35	6.98	11.20	8.37
<b>TGM22200 (R-L)</b>	200	2900	22.00	26.40	5.81	6.97	1450	1740	11.43	8.53	13.71	10.23
<b>TGM25200 (R-L)</b>	200	2900	25.00	30.00	6.60	7.93	1450	1740	12.99	9.69	15.58	11.63
<b>TGM27200 (R-L)</b>	200	2900	27.00	32.40	7.13	8.56	1450	1740	14.03	10.38	16.83	12.56
<b>TGM30200 (R-L)</b>	200	2900	30.00	36.00	7.93	9.51	1450	1740	15.58	11.63	18.70	13.96
<b>TGM33200 (R-L)</b>	200	2900	33.00	39.60	8.72	10.46	1450	1740	17.14	12.79	20.57	15.35

# Exploded TGM $\varnothing 20$ - $\varnothing 22$

## Esploso TGM $\varnothing 20$ - $\varnothing 22$

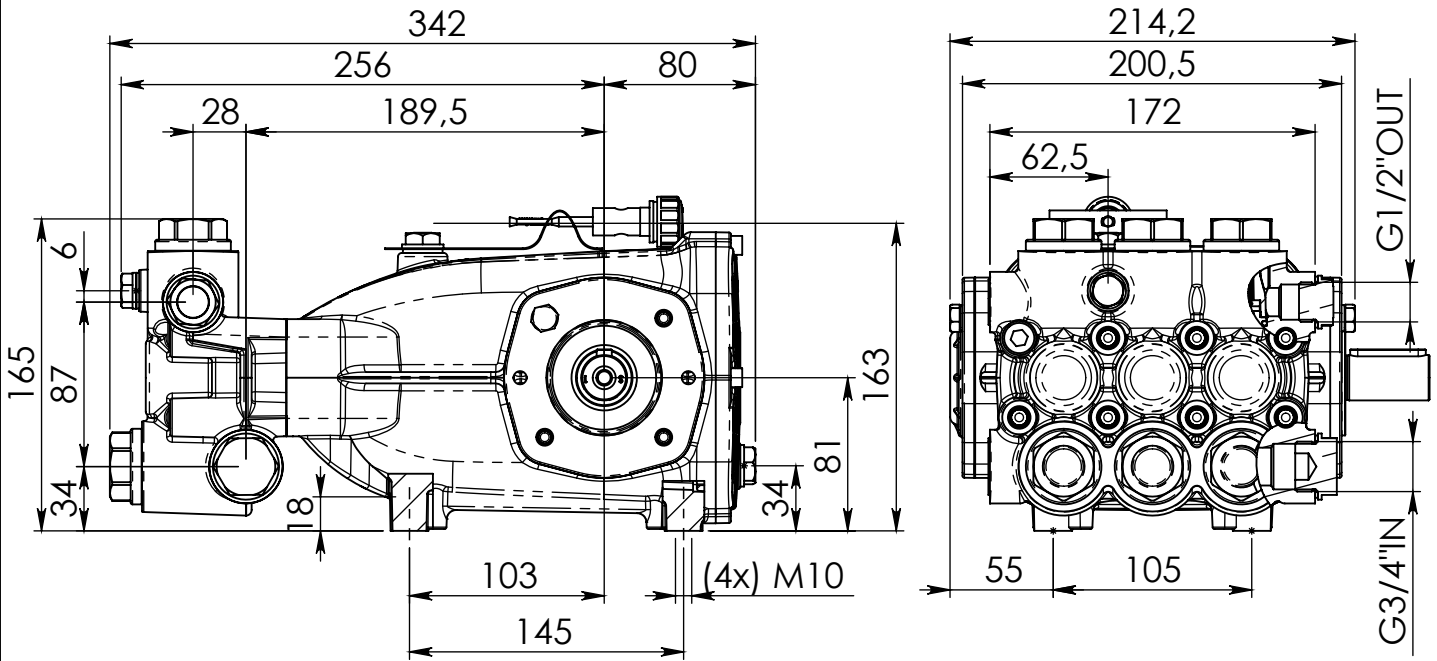




Pos.								Code	ITALIANO	ENGLISH	DEUTSCH	ESPAÑOL	FRANCAIS
	TGM 18200 (R-L) Q.TY	TGM 22200 (R-L) Q.TY	TGM 25200 (R-L) Q.TY	TGM 27200 (R-L) Q.TY	TGM 30200 (R-L) Q.TY	TGM 33200 (R-L) Q.TY							
2	1	1	1	1	1	1	P0.020.004	Olio o Lubrificante GM/XM	Oil or Lubricants GM/XM	Öl oder Schmierstoffe GM/XM	Aceite o lubricante GM/XM	ÖlHuile ou lubrifiant GM/XM	
3	3	3	3	3	3	3	P1.003.004	Rondella	Washer	Unterlegscheibe	Arandela	Rondelle	
4	1	1	1	1	1	1	P1.012.052	Tappo	Cap	Deckel	Tapón	Bouchon	
5	1	1	1	1	1	1	P1.020.004	Corpo Pompa GM1 XM-1	Pump Body GM1 XM-1	Pumpenkörper GM1 XM-1	Cuerpo de la bomba GM1 XM-1	Corps de pompe GM1 XM-1	
6	1	1	1	1	1	1	P1.060.005	Distanziale 0,1mm	Spacer 0,1mm	Distanzstueck 0,1mm	Distanciador 0,1mm	Entretoise 0,1mm	
7	1	1	1	1	1	1	P1.060.006	Distanziale sp. 0.2mm	Spacer sp. 0.2mm	Distanzstueck sp. 0.2mm	Distanciador sp. 0.2mm	Entretoise sp. 0.2mm	
8	3	3	3	3	-	-	P1.071.009	Pistone ø20 GM-1	Piston ø20 GM-1	Kolben ø20 GM-1	Pistón ø20 GM-1	Piston ø20 GM-1	
9	-	-	-	-	3	3	P1.071.010	Pistone ø22 GM-1	Piston ø22 GM-1	Kolben ø22 GM-1	Pistón ø22 GM-1	Piston ø22 GM-1	
10	1	1	1	1	1	1	P2.012.005	Coperchio GM-1/XM-1	Cover GM-1/XM-1	Deckel GM-1/XM-1	Tapa GM-1/XM-1	Couvercle GM-1/XM-1	
11	1	1	1	1	1	1	P2.013.027	Tappo 3/4" GAS	Cap 3/4" GAS	Deckel 3/4" GAS	Tapón 3/4" GAS	Bouchon 3/4" GAS	
12	1	1	1	1	1	1	P2.013.028	Tappo 1/2" GAS	Cap 1/2" GAS	Deckel 1/2" GAS	Tapón 1/2" GAS	Bouchon 1/2" GAS	
13	1	1	1	1	1	1	P2.013.037	Tappo MMD GM XM	Cap MMD GM XM	Deckel MMD GM XM	Tapón MMD GM XM	Bouchon MMD GM XM	
14	1	-	-	-	-	-	P2.014.006	Albero ec. 7.16	Shaft ec. 7.16	Welle ec. 7.16	Eje ec. 7.16	Arbre ec. 7.16	
15	-	1	-	-	-	-	P2.014.007	Albero ec. 8.5	Shaft ec. 8.5	Welle ec. 8.5	Eje ec. 8.5	Arbre ec. 8.5	
16	-	-	1	-	1	-	P2.014.008	Albero ec. 9.9	Shaft ec. 9.9	Welle ec. 9.9	Eje ec. 9.9	Arbre ec. 9.9	
17	-	-	-	1	-	1	P2.014.009	Albero ec. 10.7	Shaft ec. 10.7	Welle ec. 10.7	Eje ec. 10.7	Arbre ec. 10.7	
18	1	1	1	1	-	-	P2.035.032	Testata pompa ø20 TGM	Pump head ø20 TGM	Pumpekopf ø20 TGM	Cabeza bomba ø20 TGM	Tete de pompe ø20 TGM	
19	-	-	-	-	1	1	P2.035.033	Testata pompa ø22 TGM	Pump head ø22 TGM	Pumpeopf ø22 TGM	Cabeza bomba ø22 TGM	Tete de pompe ø22 TGM	
20	1	1	1	1	1	1	P2.060.003	Flangia P.d.F. GM-1 - XM-1	Flange P.T.O. GM-1 - XM-1	Flansch PTO GM-1 - XM-1	Brida toma de fuerza GM-1 - XM-1	Bride prise de force GM-1 - XM-1	
21	1	1	1	1	1	1	P2.060.004	Flangia chiusa GM-1 - XM-1	Flange closed GM-1 - XM-1	Flansch geschlossen GM-1 - XM-1	Brida cerrada GM-1 - XM-1	Bride fermée GM-1 - XM-1	
22	8	8	8	8	8	8	P2.119.002	Vite M8X22	Screw M8X22	Schrauben M8X22	Tornillo M8X22	Vis M8X22	
23	8	8	8	8	8	8	P2.119.004	Vite M10X80	Screw M10X80	Schrauben M10X80	Tornillo M10X80	Vis M10X80	
24	3	3	3	3	3	3	P2.119.005	Vite M6X60	Screw M6X60	Schrauben M6X60	Tornillo M6X60	Vis M6X60	
25	3	3	3	3	3	3	P2.150.007	Biella GM-1 / XM-1	Connecting rod GM-1 / XM-1	Plenelstange GM-1 / XM-1	Biela GM-1 / XM-1	Bielle GM-1 / XM-1	
26	6	6	6	6	6	6	P4.002.010	Vite M6x20 UNI 5931-67	Screw M6x20 UNI 5931-67	Schrauben M6x20 UNI 5931-67	Tornillo M6x20 UNI 5931-67	Vis M6x20 UNI 5931-67	
27	6	6	6	6	6	6	P4.002.017	Vite TCEI M8x40 UNI5931-67	Screw TCEI M8x40 UNI5931-67	Schrauben TCEI M8x40 UNI5931-67	Tornillo TCEI M8x40 UNI5931-67	Vis TCEI M8x40 UNI5931-67	
28	1	1	1	1	1	1	P4.005.041	Guarnizione OR	Gasket OR	Dichtung OR	Guarnición OR	Garniture OR	
29	3	3	3	3	3	3	P4.015.004	Anello D32-d22x5.5	Ring D32-d22x5.5	Ring D32-d22x5.5	Anillo D32-d22x5.5	Bague D32-d22x5.5	
30	-	-	-	1	-	1	P4.021.002	Chiavetta 8x7x50 UNI6604-A	Key 8x7x50 UNI6604-A	Keil 8x7x50 UNI6604-A	Chaveta 8x7x50 UNI6604-A	Clavette 8x7x50 UNI6604-A	
31	1	1	1	-	1	-	P4.021.003	Chiavetta 8x7x40 UNI6604-A	Key 8x7x40 UNI6604-A	Keil 8x7x40 UNI6604-A	Chaveta 8x7x40 UNI6604-A	Clavette 8x7x40 UNI6604-A	

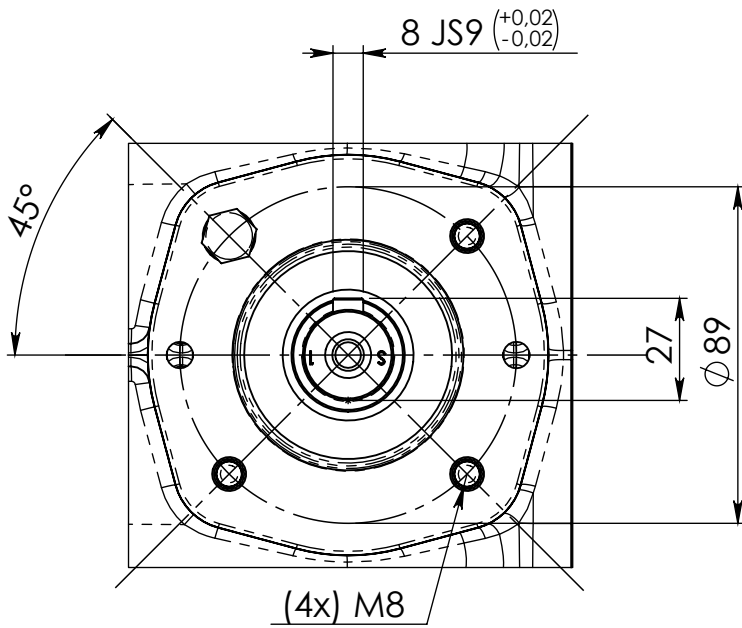
# TGM ø20-ø22 Drawing

## Disegno TGM ø20-ø22

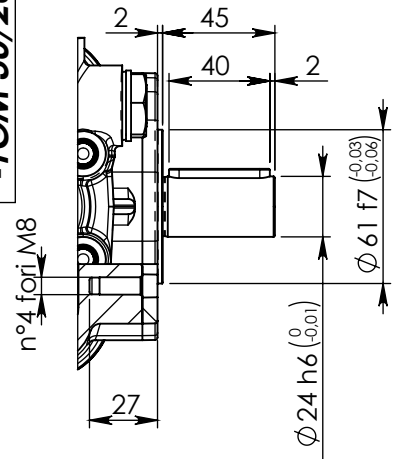


### Detailed flange view

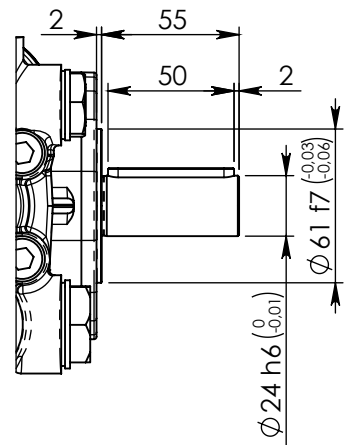
#### Vista dettagliata flangia



-TGM 18/200  
 -TGM 22/200  
 -TGM 25/200  
 -TGM 30/200



-TGM 27/200  
 -TGM 33/200



# Spare parts TGM ø20

## Ricambi TGM ø20



Code	Q.Ty	ITALIANO	ENGLISH	DEUTSCH	ESPAÑOL	FRANCAIS
P2.003.007	6	Gruppo valvola ø20 - ø22 GM-1	Valves Group ø20 - ø22 GM-1	Ventil Gruppe ø20 - ø22 GM-1	Groupe Vannes ø20 - ø22 GM-1	Grupo Valvulas ø20 - ø22 GM-1
P4.005.014	6	NBR-3.53X25.8	O-ring ø3.15x25.80	O-Ring ø3.15x25.80	OR ø3.15x25.80	Joint torique ø3.15x25.80
P4.005.015	6	OR 3087	O-ring 3087	O-Ring 3087	OR 3087	Joint torique 3087

P9.001.007  
VALVOLA COMPLETA POMPA GM-1 Ø20 - Ø22 - KIT VALVES



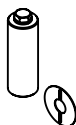
Code	Q.Ty	ITALIANO	ENGLISH	DEUTSCH	ESPAÑOL	FRANCAIS
P4.005.017	3	OR 1.78x37.82 GM	O-ring 1.78x37.82 GM	O-Ring 1.78x37.82 GM	OR 1.78x37.82 GM	Joint torique 1.78x37.82 GM
P4.100.015	3	Tenuta pistone posteriore HT ø20	Piston seal back HT ø20	Kolbendichtung zurück HT ø20	Piston sellado posterior HT ø20	Piston joint arrière HT ø20
P4.100.026	3	Tenuta pistone anteriore HT ø20	Front piston seal HT ø20	Front Kolbendichtung HT ø20	Junta del pistón delantero HT ø20	Joint de piston avant HT ø20

P9.003.032  
GUARNIZIONE PISTONE ø20 POMPA GM-1 HT - KIT PLUNGER SEALS



Code	Q.Ty	ITALIANO	ENGLISH	DEUTSCH	ESPAÑOL	FRANCAIS
P1.024.033	1	Diffusore ø20 (GM-1)	Diffusor ø20 (GM-1)	Diffusor ø20 (GM-1)	Difusor ø20 (GM-1)	Diffuseur ø20 (GM-1)
P2.118.007	1	Pressore ø20 GM-1 HT	Pressure Ring ø20 GM-1 HT	Bague de pression ø20 GM-1 HT	Anillo de presión ø20 GM-1 HT	Bague de pression ø20 GM-1 HT
P4.100.026	1	Tenuta pistone anteriore HT ø20	Front piston seal HT ø20	Front Kolbendichtung HT ø20	Junta del pistón delantero HT ø20	Joint de piston avant HT ø20

P9.003.029  
GUARNIZIONE PISTONE ø20 POMPA GM-1 HT PACCO COMPLETO - KIT COMPLETE SEALS



Code	Q.Ty	ITALIANO	ENGLISH	DEUTSCH	ESPAÑOL	FRANCAIS
P1.003.004	1	Rondella	Washer	Unterlegscheibe	Arandela	Rondelle
P1.071.009	1	Pistone ø20 GM-1	Piston ø20 GM-1	Kolben ø20 GM-1	Pistón ø20 GM-1	Piston ø20 GM-1
P2.119.005	1	Vite M6X60	Screw M6X60	Schrauben M6X60	Tornillo M6X60	Vis M6X60

P9.004.009  
PISTONE ø20 POMPA GM-1 - KIT CERAMIC PISTON



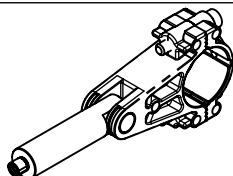
Code	Q.Ty	ITALIANO	ENGLISH	DEUTSCH	ESPAÑOL	FRANCAIS
P4.015.004	3	Anello D32-d22x5.5	Ring D32-d22x5.5	Ring D32-d22x5.5	Anillo D32-d22x5.5	Bague D32-d22x5.5

P9.039.002  
ANELLI TENUTA OLIO ASTA POMPA GM-XM - KIT OIL SEALS



Code	Q.Ty	ITALIANO	ENGLISH	DEUTSCH	ESPAÑOL	FRANCAIS
P2.013.027	1	Tappo 3/4" GAS	Cap 3/4" GAS	Deckel 3/4" GAS	Tapón 3/4" GAS	Bouchon 3/4" GAS
P2.013.028	1	Tappo 1/2" GAS	Cap 1/2" GAS	Deckel 1/2" GAS	Tapón 1/2" GAS	Bouchon 1/2" GAS
P2.035.032	1	Testata pompa ø20 TGM	Pump head ø20 TGM	Pumpekopf ø20 TGM	Cabeza bomba ø20 TGM	Tete de pompe ø20 TGM
P4.043.001	1	Protezione ø20	Protection ø20	Schutz ø20	Protección ø20	Protection ø20
P4.043.003	1	Protezione ø26.5	Protection ø26.5	Schutz ø26.5	Protección ø26.5	Protection ø26.5

P9.040.020  
TESTATA COMPLETA PISTONE ø20 POMPA GM-1 HT - COMPLETE HEAD OF THE PUMP



Code	Q.Ty	ITALIANO	ENGLISH	DEUTSCH	ESPAÑOL	FRANCAIS
P2.150.007	1	Biella GM-1 / XM-1	Connecting rod GM-1 / XM-1	Plenelstange GM-1 / XM-1	Biela GM-1 / XM-1	Bielle GM-1 / XM-1
P4.002.017	2	Vite TCEI M8x40 UNI5931-67	Screw TCEI M8x40 UNI5931-67	Schrauben TCEI M8x40 UNI5931-67	Tornillo TCEI M8x40 UNI5931-67	Vis TCEI M8x40 UNI5931-67

P9.041.005  
BIELLA -ASTA POMPA GM-1 - XM-1 - PREASSEMBLED CONNECTING ROD

# Spare parts TGM ø22

## Ricambi TGM ø22



Code	Q.Ty	ITALIANO	ENGLISH	DEUTSCH	ESPAÑOL	FRANCAIS
P2.003.007	6	Gruppo valvola ø20 - ø22 GM-1	Valves Group ø20 - ø22 GM-1	Ventil Gruppe ø20 - ø22 GM-1	Groupe Vannes ø20 - ø22 GM-1	Grupo Valvulas ø20 - ø22 GM-1
P4.005.014	6	NBR-3.53X25.8	O-ring ø3.15x25.80	O-Ring ø3.15x25.80	OR ø3.15x25.80	Joint torique ø3.15x25.80
P4.005.015	6	OR 3087	O-ring 3087	O-Ring 3087	OR 3087	Joint torique 3087

P9.001.007  
VALVOLA COMPLETA POMPA GM-1 Ø20 - Ø22 - KIT VALVES



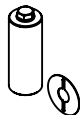
Code	Q.Ty	ITALIANO	ENGLISH	DEUTSCH	ESPAÑOL	FRANCAIS
P4.005.017	3	OR 1.78x37.82 GM	O-ring 1.78x37.82 GM	O-Ring 1.78x37.82 GM	OR 1.78x37.82 GM	Joint torique 1.78x37.82 GM
P4.100.020	3	Tenuta pistone anteriore HT ø22	Front piston seal HT ø22	Front Kolbendichtung HT ø22	Junta del pistón delantero HT ø22	Joint de piston avant HT ø22
P4.100.023	3	Tenuta pistone posteriore HT ø22	Piston seal back HT ø22	Kolbendichtung zurück HT ø22	Piston sellado posterior HT ø22	Piston joint arrière HT ø22

P9.003.033  
GUARNIZIONE PISTONE ø22 POMPA GM-1 HT - KIT PLUNGER SEALS



Code	Q.Ty	ITALIANO	ENGLISH	DEUTSCH	ESPAÑOL	FRANCAIS
P1.024.032	1	Diffusore ø22 GM-1	Diffusor ø22 GM-1	Diffusor ø22 GM-1	Difusor ø22 GM-1	Diffuseur ø22 GM-1
P2.118.011	1	Pressore GM-1 ø22 HT	Pressure Ring GM-1 ø22 HT	Bague de pression GM-1 ø22 HT	Anillo de presión GM-1 ø22 HT	Bague de pression GM-1 ø22 HT
P4.100.020	1	Tenuta pistone anteriore HT ø22	Front piston seal HT ø22	Front Kolbendichtung HT ø22	Junta del pistón delantero HT ø22	Joint de piston avant HT ø22

P9.003.024  
GUARNIZIONE PISTONE ø22 POMPA GM-1 HT PACCO COMPLETO - KIT COMPLETE SEALS



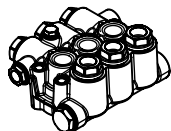
Code	Q.Ty	ITALIANO	ENGLISH	DEUTSCH	ESPAÑOL	FRANCAIS
P1.003.004	1	Rondella	Washer	Unterlegscheibe	Arandela	Rondelle
P1.071.010	1	Pistone ø22 GM-1	Piston ø22 GM-1	Kolben ø22 GM-1	Pistón ø22 GM-1	Piston ø22 GM-1
P2.119.005	1	Vite M6X60	Screw M6X60	Schrauben M6X60	Tornillo M6X60	Vis M6X60

P9.004.010  
PISTONE ø22 POMPA GM-1 - KIT CERAMIC PISTON



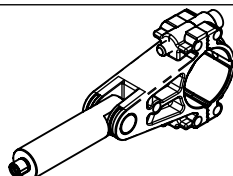
Code	Q.Ty	ITALIANO	ENGLISH	DEUTSCH	ESPAÑOL	FRANCAIS
P4.015.004	3	Anello D32-d22x5.5	Ring D32-d22x5.5	Ring D32-d22x5.5	Anillo D32-d22x5.5	Bague D32-d22x5.5

P9.039.002  
ANELLI TENUTA OLIO ASTA POMPA GM-XM - KIT OIL SEALS



Code	Q.Ty	ITALIANO	ENGLISH	DEUTSCH	ESPAÑOL	FRANCAIS
P2.013.027	1	Tappo 3/4" GAS	Cap 3/4" GAS	Deckel 3/4" GAS	Tapón 3/4" GAS	Bouchon 3/4" GAS
P2.013.028	1	Tappo 1/2" GAS	Cap 1/2" GAS	Deckel 1/2" GAS	Tapón 1/2" GAS	Bouchon 1/2" GAS
P2.035.033	1	Testata pompa ø22 TGM	Pump head ø22 TGM	Pumpekopf ø22 TGM	Cabeza bomba ø22 TGM	Tete de pompe ø22 TGM
P4.043.001	1	Protezione ø20	Protection ø20	Schutz ø20	Protección ø20	Protection ø20
P4.043.003	1	Protezione ø26.5	Protection ø26.5	Schutz ø26.5	Protección ø26.5	Protection ø26.5

P9.040.021  
TESTATA COMPLETA PISTONE ø22 POMPA GM-1 HT - COMPLETE HEAD OF THE PUMP



Code	Q.Ty	ITALIANO	ENGLISH	DEUTSCH	ESPAÑOL	FRANCAIS
P2.150.007	1	Biella GM-1 / XM-1	Connecting rod GM-1 / XM-1	Plenelstange GM-1 / XM-1	Biela GM-1 / XM-1	Bielle GM-1 / XM-1
P4.002.017	2	Vite TCEI M8x40 UNI5931-67	Screw TCEI M8x40 UNI5931-67	Schrauben TCEI M8x40 UNI5931-67	Tornillo TCEI M8x40 UNI5931-67	Vis TCEI M8x40 UNI5931-67

P9.041.005  
BIELLA -ASTA POMPA GM-1 - XM-1 - PREASSEMBLED CONNECTING ROD

# Pump head ø20 TGM

## Testata pompa ø20 TGM



Use LOCTITE 270.  
**TIGHTENING TORQUE 40Nm.**

Spare parts  
P9.003.032

Spare parts  
P9.001.007

**TIGHTENING TORQUE 25 Nm**

Spare parts  
P9.003.029

Use LOCTITE 270.  
**TIGHTENING TORQUE 40Nm.**

Spare parts  
P9.001.007

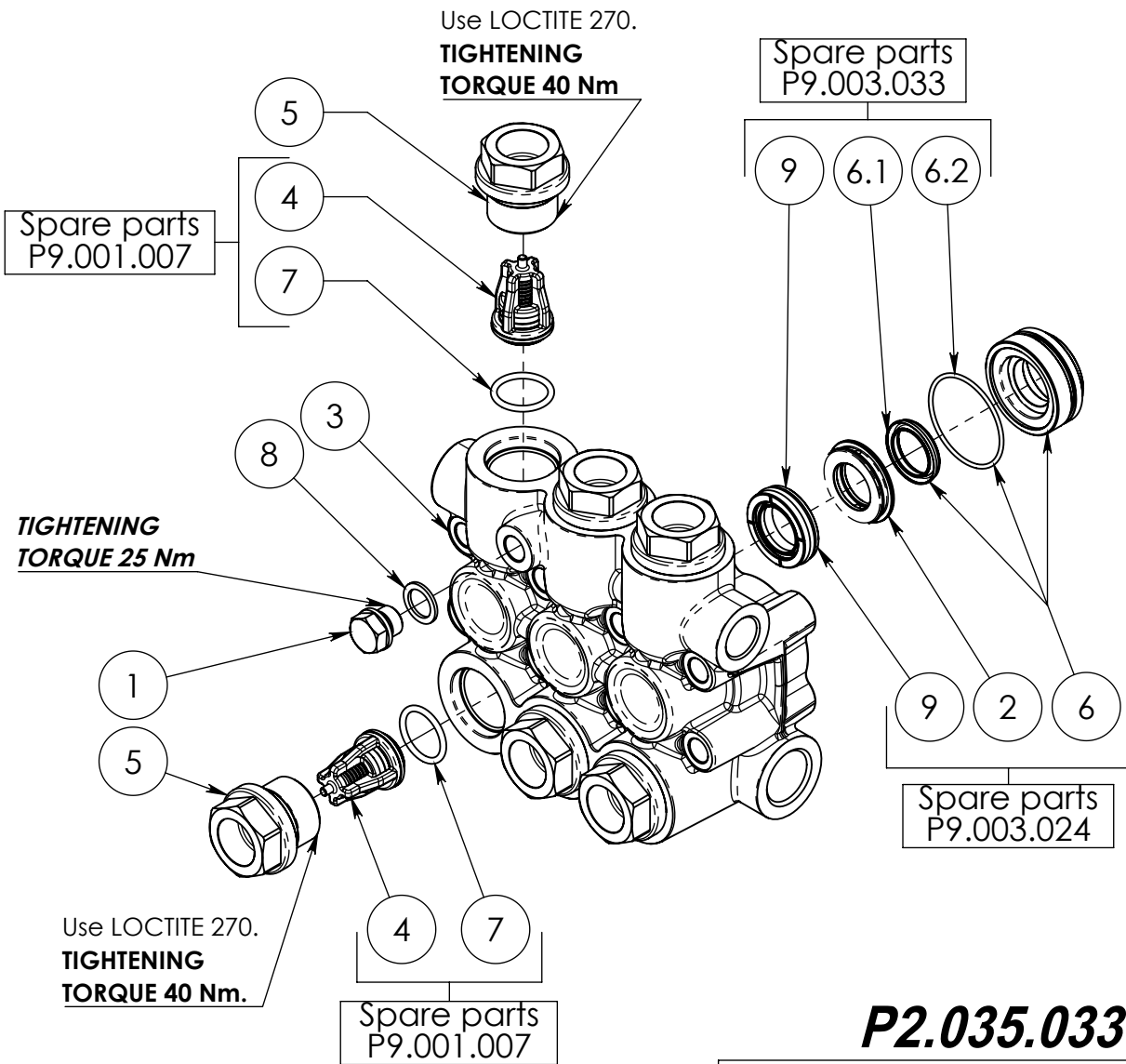
**P2.035.032.C**

*Spare parts P9.040.024*

Pos.	Q.Ty	Code	ITALIANO	ENGLISH	DEUTSCH	ESPAÑOL	FRANCAIS
1	1	P1.012.017	Tappo G 1/4 H18	Cap G 1/4 H18	Deckel G 1/4 H18	Tapón G 1/4 H18	Bouchon G 1/4 H18
2	3	P1.024.033	Diffusore ø20 (GM-1)	Diffusor ø20 (GM-1)	Diffusor ø20 (GM-1)	Difusor ø20 (GM-1)	Diffuseur ø20 (GM-1)
3	1	P1.043.016	Testata pompa GM-1 (ø20-ø22) -Ni-	Pump head GM-1 (ø20-ø22) -Ni-	Pumpekopf GM-1 (ø20-ø22) -Ni-	Cabeza bomba GM-1 (ø20-ø22) -Ni-	Tete de pompe GM-1 (ø20-ø22) -Ni-
4	6	P2.003.007	Gruppo valvola ø20 - ø22 GM-1	Valves Group ø20 - ø22 GM-1	Ventil Gruppe ø20 - ø22 GM-1	Groupe Vannes ø20 - ø22 GM-1	Grupo Valvulas ø20 - ø22 GM-1
5	6	P2.013.016	Tappo TGM-1 M30x1.5 + OR	Cap TGM-1 M30x1.5 + OR	Deckel TGM-1 M30x1.5 + OR	Tapón TGM-1 M30x1.5 + OR	Bouchon TGM-1 M30x1.5 + OR
6	3	P2.118.007	Pressore GM-1 ø20 HT	Pressure Ring GM-1 ø20 HT	Bague de pression GM-1 ø20 HT	Anillo de presión GM-1 ø20 HT	Bague de pression GM-1 ø20 HT
6.1	1	P4.100.023	Tenuta pistone posteriore ø22xø28.15x4.8 HT	Piston seal beack ø22xø28.15x4.8 HT	Kolbendichtung zuruck ø22xø28.15x4.8 HT	Piston sellado posterior ø22xø28.15x4.8 HT	Piston joint arriere ø22xø28.15x4.8 HT
6.2	1	P4.005.017	OR 1.78x37.82 GM	O-ring 1.78x37.82 GM	O-Ring 1.78x37.82 GM	OR 1.78x37.82 GM	Joint torique 1.78x37.82 GM
7	6	P4.005.015	OR 3087	O-ring 3087	O-Ring 3087	OR 3087	Joint torique 3087
8	1	P4.008.007	Rondella Rame 1/4 Ø13x19x1.5	Copper washer 1/4 Ø13x19x1.5	Kupferunterlegscheibe 1/4 Ø13x19x1.5	Arandela de cobre 1/4 Ø13x19x1.5	Rondelle cuivre 1/4 Ø13x19x1.5
9	3	P4.100.026	Tenuta pistone anteriore HT ø20	Front piston seal HT ø20	Front Kolbendichtung HT ø20	Junta del pistón delantero HT ø20	Joint de piston avant HT ø20

# Pump head ø22 TGM

## Testata pompa ø22 TGM



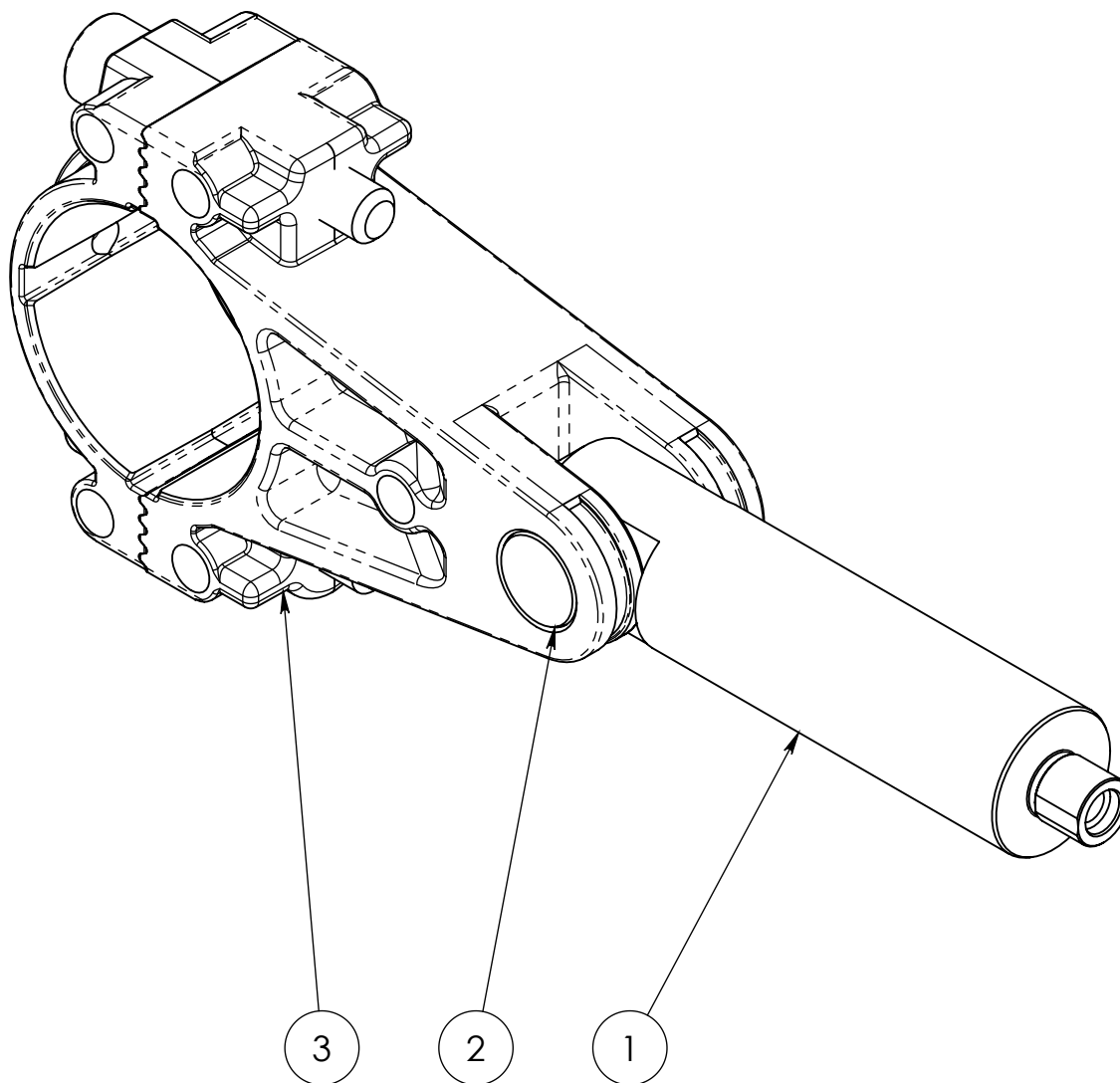
**P2.035.033.C**

*Spare parts P9.040.021*

Pos.	Q.Ty	Code	ITALIANO	ENGLISH	DEUTSCH	ESPAÑOL	FRANCAIS
1	1	P1.012.017	Tappo G 1/4 H18	Cap G 1/4 H18	Deckel G 1/4 H18	Tapón G 1/4 H18	Bouchon G 1/4 H18
2	3	P1.024.032	Diffusore ø22 GM-1	Diffusor ø22 GM-1	Diffusor ø22 GM-1	Difusor ø22 GM-1	Diffuseur ø22 GM-1
3	1	P1.043.016	Testata pompa GM-1 (ø20-ø22) -Ni-	Pump head GM-1 (ø20-ø22) -Ni-	Pumpekopf GM-1 (ø20-ø22) -Ni-	Cabeza bomba GM-1 (ø20-ø22) -Ni-	Tete de pompe GM-1 (ø20-ø22) -Ni-
4	6	P2.003.007	Gruppo valvola ø20 - ø22 GM-1	Valves Group ø20 - ø22 GM-1	Ventil Gruppe ø20 - ø22 GM-1	Groupe Vannes ø20 - ø22 GM-1	Grupo Valvulas ø20 - ø22 GM-1
5	6	P2.013.016	Tappo TGM-1 M30x1.5 + OR	Cap TGM-1 M30x1.5 + OR	Deckel TGM-1 M30x1.5 + OR	Tapón TGM-1 M30x1.5 + OR	Bouchon TGM-1 M30x1.5 + OR
6	3	P2.118.011	Pressore GM-1 ø22 HT	Pressure Ring GM-1 ø22 HT	Bague de pression GM-1 ø22 HT	Anillo de presión GM-1 ø22 HT	Bague de pression GM-1 ø22 HT
6.1	1	P4.100.023	Tenuta pistone posteriore ø22xø28.15x4.8 HT	Piston seal beack ø22xø28.15x4.8 HT	Kolbendichtung zuruck ø22xø28.15x4.8 HT	Piston sellado posterior ø22xø28.15x4.8 HT	Piston joint arriere ø22xø28.15x4.8 HT
6.2	1	P4.005.017	OR 1.78x37.82 GM	O-ring 1.78x37.82 GM	O-Ring 1.78x37.82 GM	OR 1.78x37.82 GM	Joint torique 1.78x37.82 GM
7	6	P4.005.015	OR 3087	O-ring 3087	O-Ring 3087	OR 3087	Joint torique 3087
8	1	P4.008.007	Rondella Rame 1/4 Ø13x19x1.5	Copper washer 1/4 Ø13x19x1.5	Kupferunterlegsscheibe 1/4 Ø13x19x1.5	Arandela de cobre 1/4 Ø13x19x1.5	Rondelle cuivre 1/4 Ø13x19x1.5
9	3	P4.100.020	Tenuta pistone anteriore HT ø22	Front piston seal HT ø22	Front Kolbendichtung HT ø22	Junta del pistón delantero HT ø22	Joint de piston avant HT ø22

# Connecting rod GM-1 / XM-1

## Biella GM-1 / XM-1



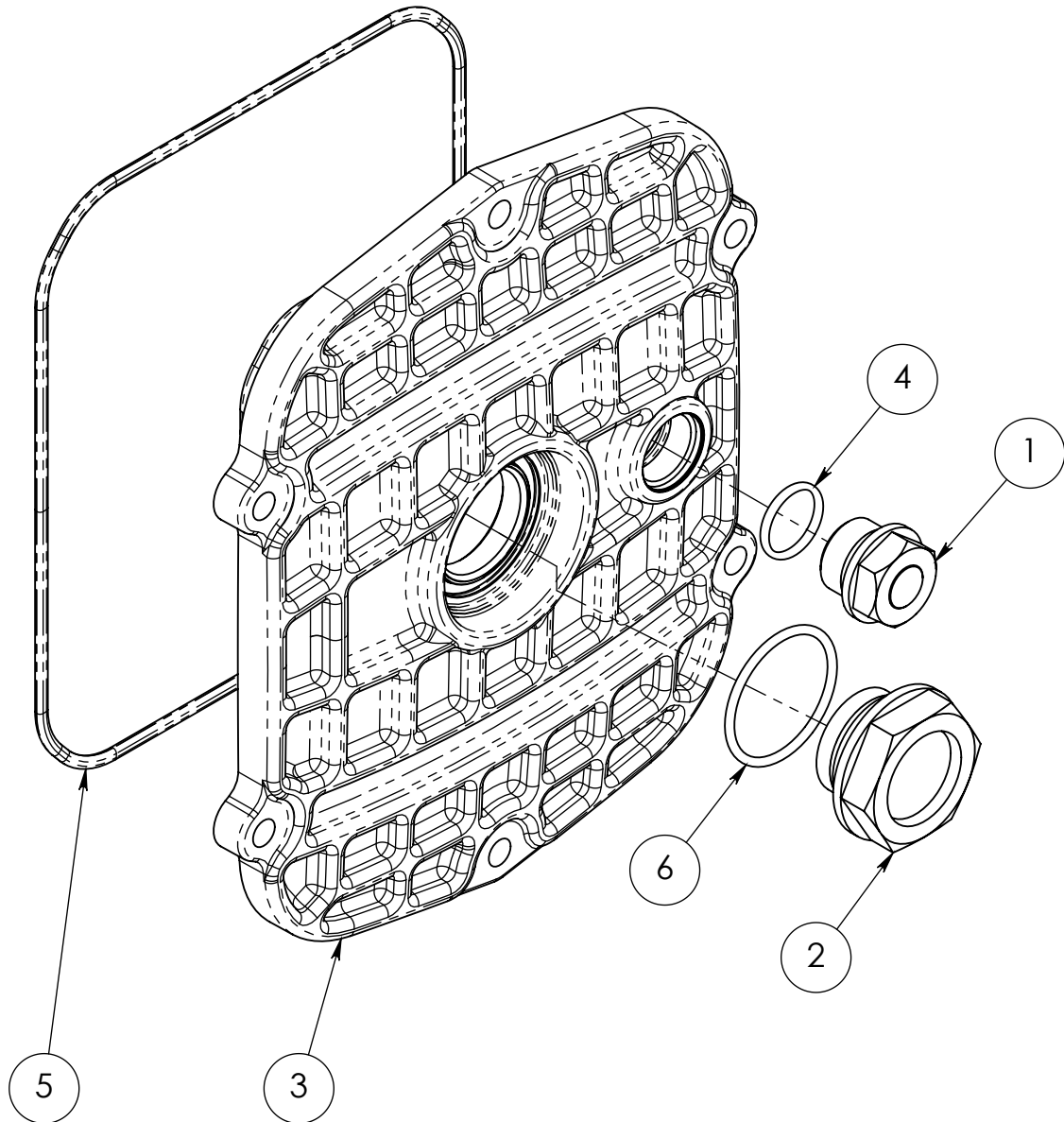
**P2.150.007.B**

*Spare parts P9.041.005*

Pos.	Q.Ty	Code	ITALIANO	ENGLISH	DEUTSCH	ESPAÑOL	FRANCAIS
1	1	P1.010.007	Asta GM-1	Pole GM-1	Pfosten GM-1	Asta GM-1	Tige GM-1
2	1	P1.013.003	Spina cilindrica	Cylindrical pin	Zylinder Stiff	Pasador cilindrico	Goupille cylindrique
3	1	P1.099.010	Biella GM-1 / XM-1	Connecting rod GM-1 / XM-1	Plenelstange GM-1 / XM-1	Biela GM-1 / XM-1	Bielle GM-1 / XM-1

# Cover GM-1/XM-1

## Coperchio GM-1/XM-1



**P2.012.005.E**

Pos.	Q.Ty	Code	ITALIANO	ENGLISH	DEUTSCH	ESPAÑOL	FRANCAIS
1	1	P1.012.003	Tappo G 3/8" H18	Cap G 3/8" H18	Deckel G 3/8" H18	Tapón G 3/8" H18	Bouchon G 3/8" H18
2	1	P1.012.015	Tappo G3/4	Cap G3/4	Deckel G3/4	Tapón G3/4	Bouchon G3/4
3	1	P1.054.011	Coperchio	Cover	Deckel	Tapa	Couvercle
4	1	P4.005.007	Guarnizione OR 2056 14x1.78NBR 70Sh	Gasket OR 2056 14x1.78NBR 70Sh	Dichtung OR 2056 14x1.78NBR 70Sh	Guarnición OR 2056 14x1.78NBR 70Sh	Garniture OR 2056 14x1.78NBR 70Sh
5	1	P4.005.020	OR ø2.62x152.07 NBR 70sh	O-ring ø2.62x152.07 NBR 70sh	O-Ring ø2.62x152.07 NBR 70sh	OR ø2.62x152.07 NBR 70sh	Joint torique ø2.62x152.07 NBR 70sh
6	1	P4.005.030	OR ORM0285-20 (NBR)	O-ring ORM0285-20 (NBR)	O-Ring ORM0285-20 (NBR)	OR ORM0285-20 (NBR)	Joint torique ORM0285-20 (NBR)