



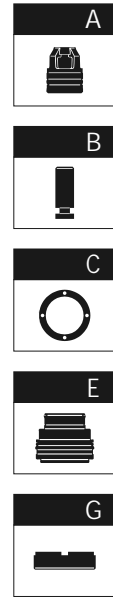
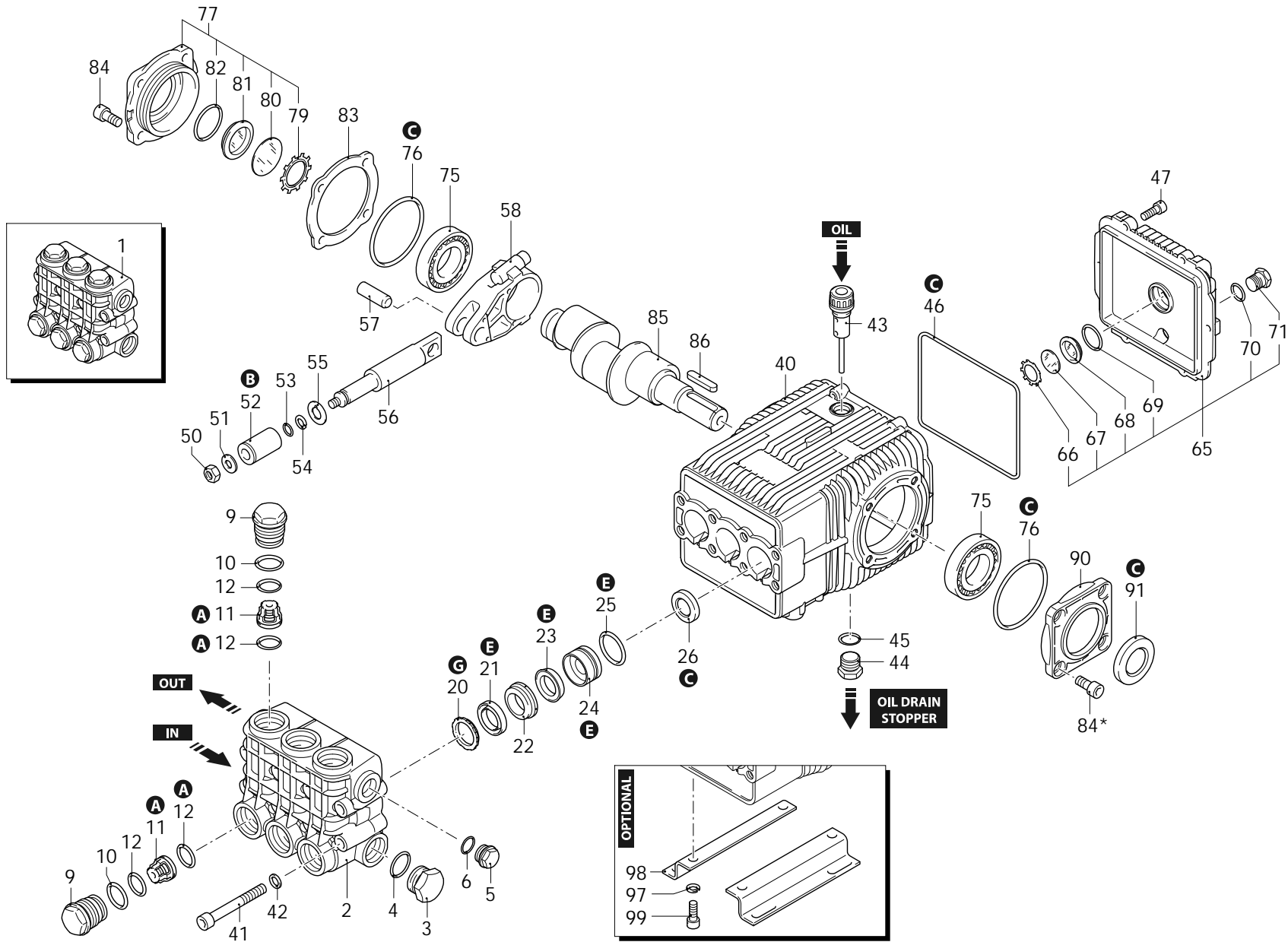
Series 194

WHW

N

1450rpm

ø 24mm



AR\_s194-08\_022

09/10/2025



Series 194

WHW

N

1450rpm

Ø 24mm

P	Code	Description	Q	Assembly prescription	Validity	P	Code	Description	Q	Assembly prescription	Validity
1	1949229	Head assembly	Ø 22 nickel plated	1		69	1140450	O-ring	Ø 20,24x2,62	1	Lubricate with grease Molykote PG54
2	1941780	Head	nickel plated	1		70	740290	O-ring	Ø 14x1,78	1	Lubricate with grease Molykote PG54
3	1140480	Plug	3/4" G nickel	1	C=35Nm	71	1981180	Plug	3/8" G nickel	1	C=20Nm / Loxeal 55-14
4	550350	O-ring	Ø 23,81x2,62	1		75	1140410	Bearing		2	
5	1981180	Plug	3/8" G nickel	1	C=20Nm / Loxeal 55-14	76	1941380	O-ring	Ø 66,34x2,62	2	
6	740290	O-ring	Ø 14x1,78	1	Lubricate with grease Molykote PG54	77	2529011	Cover		1	
9	1941790	Plug	nickel	6		79	1941290	Ring		1	
10	1940150	Ring	anti-extrusion	6		80	1941260	Plate		1	
11	1949050	Complete valve		6		81	1941270	Level gauge		1	
12	1140450	O-ring	Ø 20,24x2,62	12	Lubricate with grease Molykote PG54	82	100410	O-ring	Ø 34,6x2,62	1	
20	840320	Ring	support Ø 22	3		83	1941390	Shim 0.05mm		1	
21	1942860	Water seal	Ø 22 PTFE	3		83	1941400	Shim 0.10mm		1	
22	1942810	Piston guide	front Ø 22	3		83	1941410	Shim 0.19mm		1	
23	1942730	Gasket	Ø 22 PTFE	3		83	1941420	Shim 0.25mm		1	
24	1942940	Piston guide	rear Ø 22	3		84	850370	Screw	TCEI M8x16	4	C=24,5Nm
25	820490	O-ring	Ø 34,65x1,78	3		84*	850370	Screw	TCEI M8x16	4	C=24,5Nm
26	1943730	Ring	seal	3		85	1940530	Shaft	6 marked	1	
40	2520330	Pump body		1		86	650250	Key		1	
41	1941360	Screw	TCEI M10x80	8	C=42Nm	90	2520320	Support	open bearing	1	
42	650530	Washer		8		91	820681	Ring	seal	1	C=10Nm / Loxeal 55-14
43	1140370	Oil plug	with oil dipstick	1		97	200231	Washer		4	
44	1980740	Plug	3/8" G brass	1	C=20Nm	98	1940370	Foot		2	
45	740290	O-ring	Ø 14x1,78	3	Lubricate with grease Molykote PG54	99	1940380	Screw	TCEI 10x18	4	C=50Nm
46	1940410	O-ring	Ø 132x3	1		A	2780	Valve kit		1	
47	1200430	Screw	TCEI M6x16	6	C=10Nm / Loxeal 55-14	B	1891	Piston kit	Ø 22	1	
50	1940570	Nut	M8	3	C=20Nm / Loxeal 55-14	C	2873	Oil seal kit		1	
51	1940580	Washer		3		E	42402	Water seal kit	Ø 22	1	
52	1420120	Piston	Ø 22	3		G	42403	Support ring kit	Ø 22	1	
53	880840	O-ring	Ø 9,25x1,78	3	Lubricate with grease Molykote G807						
54	1940120	Ring	anti-extrusion	3							
55	960460	Plate		3							
56	1940070	Piston	guide	3							
57	1940060	Pin		3							
58	1940051	Connecting-rod	aluminium	3	Lubricate with grease Molykote BR2 PLUS / C=20Nm						
65	2529012	Cover		1							
66	1260430	Ring		1							
67	1780690	Plate		1							
68	1260250	Level gauge		1							

Revision: 1

Oil type: ISO VG220

Validity: &lt; XX/YY = From week/year

Date: 09/10/2025

Oil quantity: 0,920 Kg

C= Tightening torque (Tolerance +0 ÷ -10%)

\* = Not present for electric pump