

WK6



INFORMAZIONI TECNICHE - TECHNICAL INFORMATION

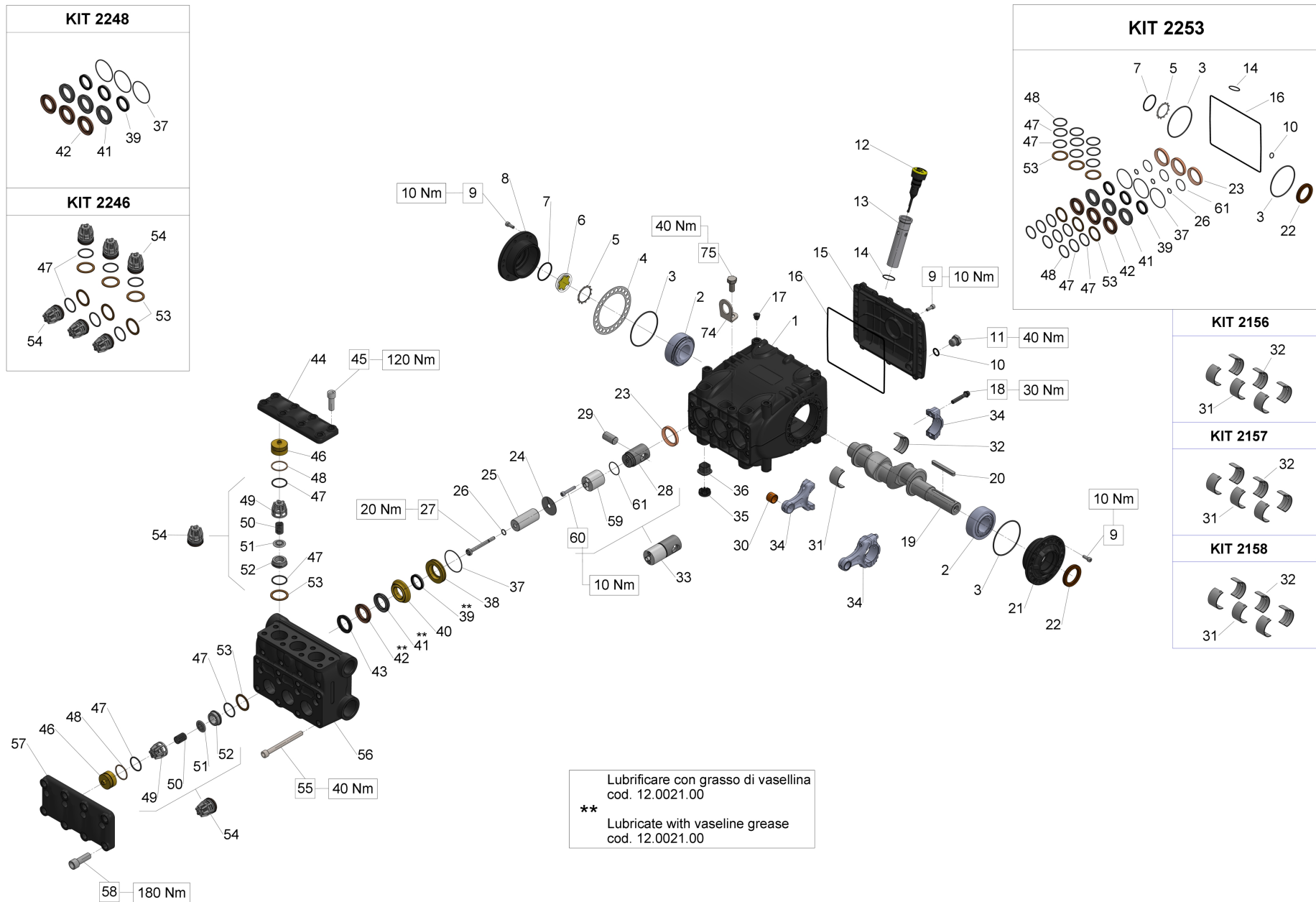
Portata (L/min)	Flow (L/min)	62
Portata (US Gpm)	Flow (US Gpm)	16,4
Regime di rotazione (rpm)	Rotation regime (rpm)	1000
Pressione (MPa)	Pressure (MPa)	10
Pressione (bar)	Pressure (bar)	100
Pressione (psi)	Pressure (psi)	1450
Potenza (hp)	Power (hp)	16,1
Potenza (kW)	Power (kW)	11,84
Dimensioni d'ingombro L x l x h (mm)	Overall dimensions L x l x h (mm)	405x340,5x253,5
Peso (kg)	Weight (kg)	35

WK6

VERSIONI - VERSIONS

Albero maschio con linguetta - GAS - Male shaft (key) - GAS	Pag.	3
Albero maschio con linguetta - NPT - Male shaft (key) - NPT	Pag.	7
Albero maschio con linguetta + flangia A - GAS - Male shaft (key) - GAS + flange A - GAS	Pag.	11
Albero cavo scanalato + flangia SAE B - GAS - Hollow shaft (spline) + SAE B flange - GAS	Pag.	15
Albero cavo scanalato + flangia SAE B - NPT - Hollow shaft (spline) + SAE B flange - NPT	Pag.	19
Versione Hy-Pack - GAS + motore a ingranaggi 70cc - Hy-Pack version - GAS + gear motor 70cc	Pag.	23
Versione Hy-Pack - GAS + motore a pistoncini 47cc - Hy-Pack version - GAS + piston motor 47cc	Pag.	27
Versione Hy-Pack - GAS + motore a ingranaggi 62cc - Hy-Pack version - GAS + gear motor 62cc	Pag.	31
Versione Hy-Pack - GAS + motore a pistoncini 64cc - Hy-Pack version - GAS + piston motor 64cc	Pag.	35
Versione Hy-Pack - GAS + motore a ingranaggi 48cc - Hy-Pack versione - GAS + gear motor 48cc	Pag.	39
Albero maschio con linguetta - GAS - ATEX - Male shaft (key) - GAS - ATEX	Pag.	43

Albero maschio con linguetta - GAS - Male shaft (key) - GAS



Albero maschio con linguetta - GAS - Male shaft (key) - GAS

Ref.	Codice - Part n°	Qtà - Qty	Descrizione	Description
1	70010022	1	CARTER POMPA	CRANKCASE
2	91847700	2	CUSC. A RULLI CONICI 35X72X28 - 33207/Q	TAPER ROLLER BEARING 33207/Q
3	90391500	2	ANELLO OR D.80,6X2,62 (BS642)	O-RING D. 80.6X2.62 (3318)
4	70220381	1	SPESSORE DI RASAMENTO 0.25 MM	SHIM 0.25 MM.
4	70220081	1	SPESSORE DI RASAMENTO 0.1 MM	SHIM 0.1 MM.
5	90075600	1	ANELLO ZJ45	CIRCLIP D.45 (ZJ45)
6	70211801	1	SPIA LIVELLO OLIO	OIL SIGHT GLASS
7	90387700	1	OR D.39,34X2,62 (3156)	O-RING 39,34X2,62 (3156)
8	70150122	1	COPERCHIO CUSCINETTO LATO SPIA	BEARING COVER (OIL GLASS SIDE)
9	99185400	20	VITE M6X16 5931 8.8 ZINC.	SCREW M6X16 UNI 5931 8.8 Z.
10	90383300	1	OR D.13,95X2,62 (3056)	O-RING 13,95X2,62 (3056)
11	98210050	1	TAPPO G3/8X13 TE22 ZINC.	PLUG G3/8x13 TE22
12	98211500	1	TAPPO CON ASTA D.21,5X70	OIL DIPSTICK D.21,5X70
13	72210695	1	TUBO PER ASTA LIVELLO OLIO	DIP STICK TUBE
14	90360400	1	OR D.25,12X1,78 (2100)	O-RING 25,12X1,78 (2100)
15	70160622	1	COPERCHIO CARTER	CRANKCASE COVER KT
16	90394200	1	OR D.190,17X2,62 (3750)	OR D.190.17X2.62 NBR 70SH
17	98200500	5	TAPPO PER FORO D.15	PLUG D. 15
18	99312300	6	VITE SERRAGGIO BIELLA M8X1X42	CONN.ROD BOLT M8X1X42
19	70020635	1	ALBERO A GOMITI C.26	CRANKSHAFT C.26
20	91490000	1	LINGUETTA 8X7X70 UNI 6604	KEY 8h9X7X70 UNI 6604/A
21	70150022	1	COPERCHIO CUSCINETTO LATO PTO	BEARING COVER (PTO SIDE)
22	90166800	1	ANELLO RAD.35X52X7	OIL SEAL D.35X52X7
23	90167700	3	ANELLO RAD.36X47X6/7.5	OIL SEAL D.36X47X7
24	96709900	3	ROSETTA D.10X45X1	WASHER D.10X45
25	70041309	3	PISTONE D32X63	PISTON D. 32X63
26	90358400	3	OR D.10,82X1,78 (2043)	O-RING D.10,82X1,78(2043)90SH
27	70224136	3	VITE FISSAGGIO PISTONE	PISTON BOLT
28	70050115	3	GUIDA PISTONE	PISTON GUIDE T.N.
29	97742000	3	SPINOTTO D.18X36	GUDGEON PIN D.18X36
30	90910000	3	BOCCOLA PIEDE DI BIELLA	CONROD BUSHING (SMALL END) S.70
31	90922200	3	SEMICUSC. TESTA BIELLA +0.50 -SUP.	UPPER HALF CONROD BUSHING +0.5 (BIG END) S.70
31	90922100	3	SEMICUSC. TESTA BIELLA +0.25 -SUP.	UPPER HALF CONROD BUSHING +0.25 (BIG END) S.70
31	90922000	3	SEMICUSC. TESTA BIELLA -SUP.	UPPER HALF CONROD BUSHING (BIG END) S.70
32	90922500	3	SEMICUSC. TESTA BIELLA +0.50 -INF.	LOWER HALF CONROD BUSHING +0.50 (BIG END) S.70
32	90922400	3	SEMICUSC. TESTA BIELLA +0.25 -INF.	LOWER HALF CONROD BUSHING +0.25 (BIG END) S.70

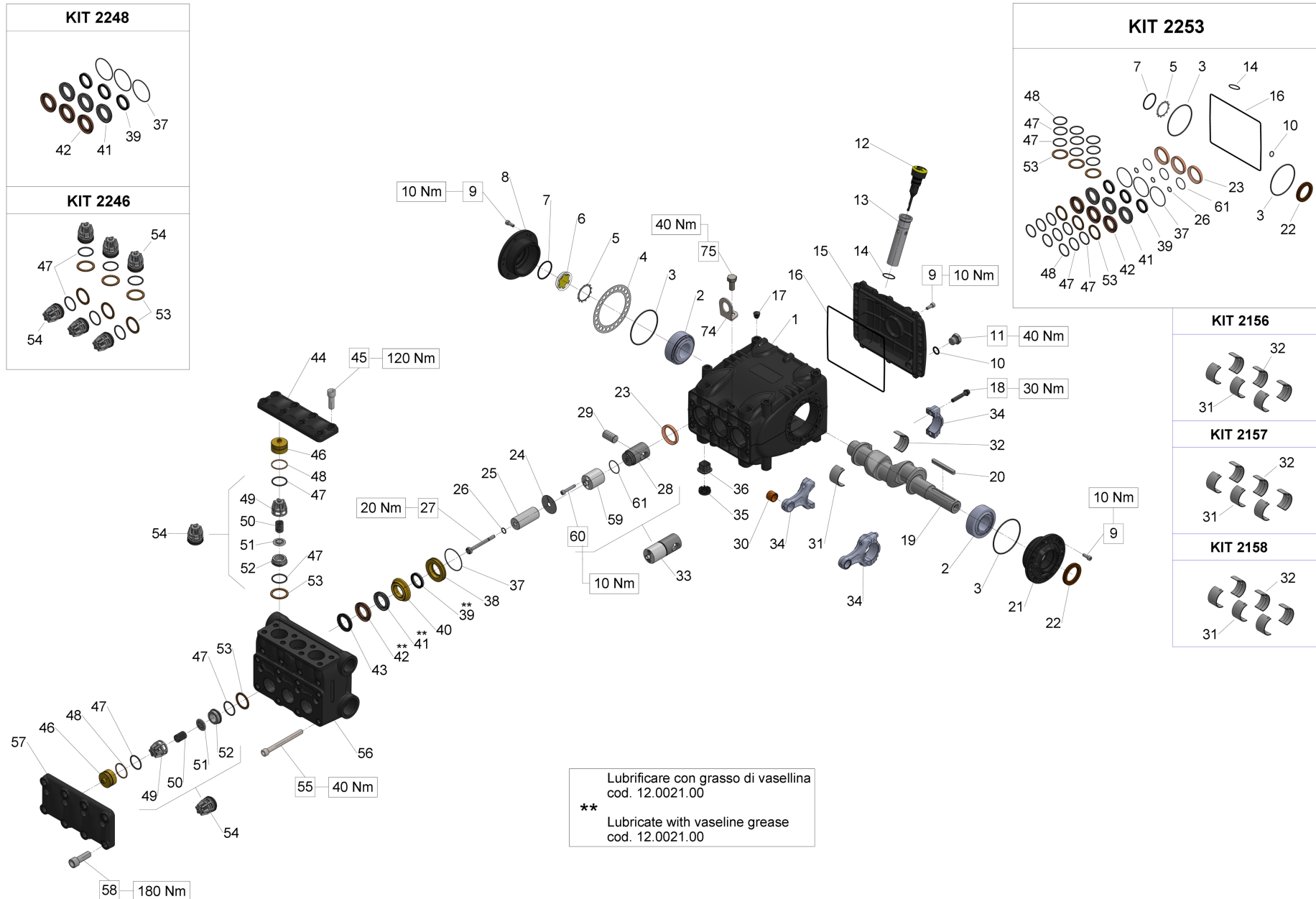
Albero maschio con linguetta - GAS - Male shaft (key) - GAS

Ref.	Codice - Part n°	Qtà - Qty	Descrizione	Description
32	90922500	3	SEMICUSC. TESTA BIELLA +0.50 - INF.	LOWER HALF CONROD BUSHING +0.50 (BIG END) S.70
33	70606801	3	GRUPPO GUIDA PISTONE	PISTON GUIDE ASSY
34	70030501	3	BIELLA COMPLETA	CONNECTING ROD COMPLETE
35	71225951	3	CAPPUCCIO TAPPO CARTER	PLUG CAP
36	70222551	6	TAPPO CARTER	CRANKCASE PLUG
37	90362600	3	OR D.50,52X1,78 (2200)	O-RING D. 50,52X1,78 (2200)
38	70082270	3	ANELLO DI FONDO D.32	PACKING RETAINER D.32
39	90278000	3	ANELLO TEN.ALT.D.32X40X5,5L.P.	PACKING D.32x40x5,5 L.P
40	70225270	3	ANELLO INTERMEDIO D.32	INTERMEDIATE RING D.32
41	90278400	3	ANELLO RESTOP D.32X44X5,5/3	RESTOP RING D. 32x44x5,5/3
42	90278800	3	ANELLO TEN.ALT.D.32X44X6/3.5HP	PACKING D.32X44
43	72100051	3	ANELLO DI TESTA PISTONE D.32	HEAD RING D.32
44	70225115	1	COPERCHIO VALVOLE MANDATA	OUTLET VALVE COVER KT
45	99429500	8	VITE TCEI M12X35 UNI4762 GEOMET 321 PLUS M	SCREW M12X35 UNI5931 12.31 DACR.
46	70225370	6	TAPPO VALVOLE ASP.MANDATA	VALVE PLUG
47	90386500	12	OR D.29,82X2,62 (3118)	O-RING 29,82X2,62 (3118)
48	90518000	6	ANELLO ANTIEST.D.32.4X36.5X1.5	ANTI-EXTR.RING D.32.4X36.5X1.5
49	36204751	6	GUIDA VALVOLA ASP. MANDATA	VALVE CAGE (70HT)
50	94745000	6	MOLLA DM 16X27,5 INOX	SPRING D. 16X27,5
51	36211766	6	VALVOLA SFERICA ASP. MANDATA	SPHERICAL VALVE
52	36204866	6	SEDE VALVOLA ASP. MANDATA	VALVE SEAT (70HT)
53	90517850	6	ANELLO ANTIEST. D.31X40X1.7	ANELLO ANTIEST. 31.0x40.0x1.7 (S.66)
54	36720801	6	GRUPPO VALVOLA A/M	INTAKE/DELIVERY VALVE KT SER.
55	99381600	4	VITE TCEI M10X110 UNI5931 8.8 ZINCATA	SCREW M10X110 UNI5931 8.8
56	70126615	1	TESTATA PER PISTONE D.32	MANIFOL FOR PISTON D.32 KT S
57	70225015	1	COPERCHIO VALVOLE ASPIRAZIONE	INLET VALVE COVER KT
58	99485000	8	VITE TCEI M14X40 UNI4762 GEOMET 321 PLUS M	SCREW M14X40 UNI5931 12.9 DACR.
59	70050266	3	STELO GUIDA PISTONE	PISTON GUIDE ROD
60	99192500	6	VITE TCEI M06X35 5931 A2-70	SCREW M06X35 5931 A2-70
61	90352800	3	OR D.29X1,5 (290-15)	O-RING D. 29.00x1.50 NBR 70SH
74	71223074	1	STAFFA DI SOLLEVAMENTO	STAFFA DI SOLLEVAMENTO
75	99426600	1	VITE TE M12X25-UNI5739 ZINC.	VITE TE M12X25-UNI5739 ZINC.
KIT2156	34215601	1	KIT 2156	KIT 2156*CONROD BUSHING
KIT2157	34215701	1	KIT 2157	KIT 2157*CONROD BUSHINGS +0,25
KIT2158	34215801	1	KIT 2158	KIT 2158*CONROD BUSHINGS +0,50
KIT2246	34224601	1	KIT 2246	KIT 2246 INTAKE/DELIVERY VALVE

Albero maschio con linguetta - GAS - Male shaft (key) - GAS

Ref.	Codice - Part n°	Qtà - Qty	Descrizione	Description
KIT2248	34224801	1	KIT 2248	KIT 2248 PACKING D. 32
KIT2253	34225301	1	KIT 2253	KIT 2253 CPL.SEAL D.32

Albero maschio con linguetta - NPT - Male shaft (key) - NPT



Albero maschio con linguetta - NPT - Male shaft (key) - NPT

Ref.	Codice - Part n°	Qtà - Qty	Descrizione	Description
1	70010022	1	CARTER POMPA	CRANKCASE
2	91847700	2	CUSC. A RULLI CONICI 35X72X28 - 33207/Q	TAPER ROLLER BEARING 33207/Q
3	90391500	2	ANELLO OR D.80,6X2,62 (BS642)	O-RING D. 80.6X2.62 (3318)
4	70220381	1	SPESSORE DI RASAMENTO 0.25 MM	SHIM 0.25 MM.
4	70220081	1	SPESSORE DI RASAMENTO 0.1 MM	SHIM 0.1 MM.
5	90075600	1	ANELLO ZJ45	CIRCLIP D.45 (ZJ45)
6	70211801	1	SPIA LIVELLO OLIO	OIL SIGHT GLASS
7	90387700	1	OR D.39,34X2,62 (3156)	O-RING 39,34X2,62 (3156)
8	70150122	1	COPERCHIO CUSCINETTO LATO SPIA	BEARING COVER (OIL GLASS SIDE)
9	99185400	20	VITE M6X16 5931 8.8 ZINC.	SCREW M6X16 UNI 5931 8.8 Z.
10	90383300	1	OR D.13,95X2,62 (3056)	O-RING 13,95X2,62 (3056)
11	98210050	1	TAPPO G3/8X13 TE22 ZINC.	PLUG G3/8x13 TE22
12	98211500	1	TAPPO CON ASTA D.21,5X70	OIL DIPSTICK D.21,5X70
13	72210695	1	TUBO PER ASTA LIVELLO OLIO	DIP STICK TUBE
14	90360400	1	OR D.25,12X1,78 (2100)	O-RING 25,12X1,78 (2100)
15	70160622	1	COPERCHIO CARTER	CRANKCASE COVER KT
16	90394200	1	OR D.190,17X2,62 (3750)	OR D.190.17X2.62 NBR 70SH
17	98200500	5	TAPPO PER FORO D.15	PLUG D. 15
18	99312300	6	VITE SERRAGGIO BIELLA M8X1X42	CONN.ROD BOLT M8X1X42
19	70020635	1	ALBERO A GOMITI C.26	CRANKSHAFT C.26
20	91490000	1	LINGUETTA 8X7X70 UNI 6604	KEY 8h9X7X70 UNI 6604/A
21	70150022	1	COPERCHIO CUSCINETTO LATO PTO	BEARING COVER (PTO SIDE)
22	90166800	1	ANELLO RAD.35X52X7	OIL SEAL D.35X52X7
23	90167700	3	ANELLO RAD.36X47X6/7.5	OIL SEAL D.36X47X7
24	96709900	3	ROSETTA D.10X45X1	WASHER D.10X45
25	70041309	3	PISTONE D32X63	PISTON D. 32X63
26	90358400	3	OR D.10,82X1,78 (2043)	O-RING D.10,82X1,78(2043)90SH
27	70224136	3	VITE FISSAGGIO PISTONE	PISTON BOLT
28	70050115	3	GUIDA PISTONE	PISTON GUIDE T.N.
29	97742000	3	SPINOTTO D.18X36	GUDGEON PIN D.18X36
30	90910000	3	BOCCOLA PIEDE DI BIELLA	CONROD BUSHING (SMALL END) S.70
31	90922200	3	SEMICUSC. TESTA BIELLA +0.50 -SUP.	UPPER HALF CONROD BUSHING +0.5 (BIG END) S.70
31	90922100	3	SEMICUSC. TESTA BIELLA +0.25 -SUP.	UPPER HALF CONROD BUSHING +0.25 (BIG END) S.70
31	90922000	3	SEMICUSC. TESTA BIELLA -SUP.	UPPER HALF CONROD BUSHING (BIG END) S.70
32	90922400	3	SEMICUSC. TESTA BIELLA +0.25 - INF.	LOWER HALF CONROD BUSHING +0.25 (BIG END) S.70

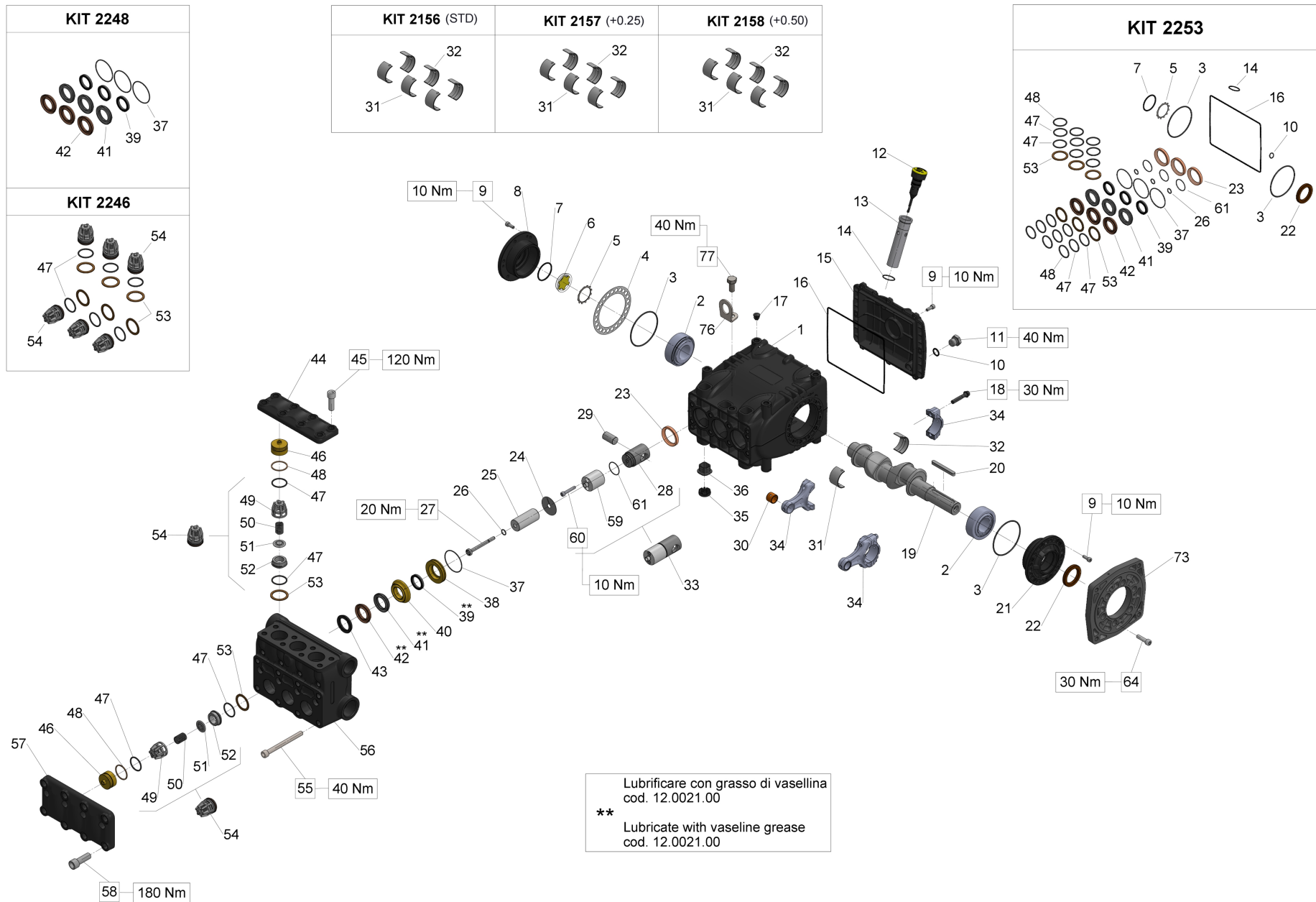
Albero maschio con linguetta - NPT - Male shaft (key) - NPT

Ref.	Codice - Part n°	Qtà - Qty	Descrizione	Description
32	90922300	3	SEMICUSC. TESTA BIELLA-INF.	LOWER HALF CONROD BUSHING (BIG END) S.70
32	90922400	3	SEMICUSC. TESTA BIELLA +0.25 - INF.	LOWER HALF CONROD BUSHING +0.25 (BIG END) S.70
33	70606801	3	GRUPPO GUIDA PISTONE	PISTON GUIDE ASSY
34	70030501	3	BIELLA COMPLETA	CONNECTING ROD COMPLETE
35	71225951	3	CAPPUCCIO TAPPO CARTER	PLUG CAP
36	70222551	6	TAPPO CARTER	CRANKCASE PLUG
37	90362600	3	OR D.50,52X1,78 (2200)	O-RING D. 50,52X1,78 (2200)
38	70082270	3	ANELLO DI FONDO D.32	PACKING RETAINER D.32
39	90278000	3	ANELLO TEN.ALT.D.32X40X5,5 L.P.	PACKING D.32x40x5,5 L.P
40	70225270	3	ANELLO INTERMEDIO D.32	INTERMEDIATE RING D.32
41	90278400	3	ANELLO RESTOP D.32X44X5,5/3	RESTOP RING D. 32x44x5,5/3
42	90278800	3	ANELLO TEN.ALT.D.32X44X6/3.5HP	PACKING D.32X44
43	72100051	3	ANELLO DI TESTA PISTONE D.32	HEAD RING D.32
44	70225115	1	COPERCHIO VALVOLE MANDATA	OUTLET VALVE COVER KT
45	99429500	8	VITE TCEI M12X35 UNI4762 GEOMET 321 PLUS M	SCREW M12X35 UNI5931 12.31 DACR.
46	70225370	6	TAPPO VALVOLE ASP.MANDATA	VALVE PLUG
47	90386500	12	OR D.29,82X2,62 (3118)	O-RING 29,82X2,62 (3118)
48	90518000	6	ANELLO ANTIEST.D.32.4X36.5X1.5	ANTI-EXTR.RING D.32.4X36.5X1.5
49	36204751	6	GUIDA VALVOLA ASP. MANDATA	VALVE CAGE (70HT)
50	94745000	6	MOLLA DM 16X27,5 INOX	SPRING D. 16X27,5
51	36211766	6	VALVOLA SFERICA ASP. MANDATA	SPHERICAL VALVE
52	36204866	6	SEDE VALVOLA ASP. MANDATA	VALVE SEAT (70HT)
53	90517850	6	ANELLO ANTIEST. D.31X40X1.7	ANELLO ANTIEST. 31.0x40.0x1.7 (S.66)
54	36720801	6	GRUPPO VALVOLA A/M	INTAKE/DELIVERY VALVE KT SER.
55	99381600	4	VITE TCEI M10X110 UNI5931 8.8 ZINCATA	SCREW M10X110 UNI5931 8.8
56	70126915	1	TESTATA PER PISTONE D.32 NPT	MANIFOLD FOR PIST.D.32 NPT
57	70225015	1	COPERCHIO VALVOLE ASPIRAZIONE	INLET VALVE COVER KT
58	99485000	8	VITE TCEI M14X40 UNI4762 GEOMET 321 PLUS M	SCREW M14X40 UNI5931 12.9 DACR.
59	70050266	3	STELO GUIDA PISTONE	PISTON GUIDE ROD
60	99192500	6	VITE TCEI M06X35 5931 A2-70	SCREW M06X35 5931 A2-70
61	90352800	3	OR D.29X1,5 (290-15)	O-RING D. 29.00x1.50 NBR 70SH
74	71223074	1	STAFFA DI SOLLEVAMENTO	STAFFA DI SOLLEVAMENTO
75	99426600	1	VITE TE M12X25-UNI5739 ZINC.	VITE TE M12X25-UNI5739 ZINC.
KIT2156	34215601	1	KIT 2156	KIT 2156*CONROD BUSHING
KIT2157	34215701	1	KIT 2157	KIT 2157*CONROD BUSHINGS +0,25
KIT2158	34215801	1	KIT 2158	KIT 2158*CONROD BUSHINGS +0,50

Albero maschio con linguetta - NPT - Male shaft (key) - NPT

Ref.	Codice - Part n°	Qtà - Qty	Descrizione	Description
KIT2246	34224601	1	KIT 2246	KIT 2246 INTAKE/DELIVERY VALVE
KIT2248	34224801	1	KIT 2248	KIT 2248 PACKING D. 32
KIT2253	34225301	1	KIT 2253	KIT 2253 CPL.SEAL D.32

Albero maschio con linguetta + flange A - GAS - Male shaft (key) - GAS + flange A - GAS



Albero maschio con linguetta + flangia A - GAS - Male shaft (key) - GAS + flange A - GAS

Ref.	Codice - Part n°	Qtà - Qty	Descrizione	Description
1	70010022	1	CARTER POMPA	CRANKCASE
2	91847700	2	CUSC. A RULLI CONICI 35X72X28 - 33207/Q	TAPER ROLLER BEARING 33207/Q
3	90391500	2	ANELLO OR D.80,6X2,62 (BS642)	O-RING D. 80.6X2.62 (3318)
4	70220381	1	SPESSORE DI RASAMENTO 0.25 MM	SHIM 0.25 MM.
4	70220081	1	SPESSORE DI RASAMENTO 0.1 MM	SHIM 0.1 MM.
5	90075600	1	ANELLO ZI45	CIRCLIP D.45 (ZI45)
6	70211801	1	SPIA LIVELLO OLIO	OIL SIGHT GLASS
7	90387700	1	OR D.39,34X2,62 (3156)	O-RING 39,34X2,62 (3156)
8	70150122	1	COPERCHIO CUSCINETTO LATO SPIA	BEARING COVER (OIL GLASS SIDE)
9	99185400	20	VITE M6X16 5931 8.8 ZINC.	SCREW M6X16 UNI 5931 8.8 Z.
10	90383300	1	OR D.13,95X2,62 (3056)	O-RING 13,95X2,62 (3056)
11	98210050	1	TAPPO G3/8X13 TE22 ZINC.	PLUG G3/8x13 TE22
12	98211500	1	TAPPO CON ASTA D.21,5X70	OIL DIPSTICK D.21,5X70
13	72210695	1	TUBO PER ASTA LIVELLO OLIO	DIP STICK TUBE
14	90360400	1	OR D.25,12X1,78 (2100)	O-RING 25,12X1,78 (2100)
15	70160622	1	COPERCHIO CARTER	CRANKCASE COVER KT
16	90394200	1	OR D.190,17X2,62 (3750)	OR D.190.17X2.62 NBR 70SH
17	98200500	5	TAPPO PER FORO D.15	PLUG D. 15
18	99312300	6	VITE SERRAGGIO BIELLA M8X1X42	CONN.ROD BOLT M8X1X42
19	70020635	1	ALBERO A GOMITI C.26	CRANKSHAFT C.26
20	91490000	1	LINGUETTA 8X7X70 UNI 6604	KEY 8h9X7X70 UNI 6604/A
21	70150022	1	COPERCHIO CUSCINETTO LATO PTO	BEARING COVER (PTO SIDE)
22	90166800	1	ANELLO RAD.35X52X7	OIL SEAL D.35X52X7
23	90167700	3	ANELLO RAD.36X47X6/7.5	OIL SEAL D.36X47X7
24	96709900	3	ROSETTA D.10X45X1	WASHER D.10X45
25	70041309	3	PISTONE D32X63	PISTON D. 32X63
26	90358400	3	OR D.10,82X1,78 (2043)	O-RING D.10,82X1,78(2043)90SH
27	70224136	3	VITE FISSAGGIO PISTONE	PISTON BOLT
28	70050115	3	GUIDA PISTONE	PISTON GUIDE T.N.
29	97742000	3	SPINOTTO D.18X36	GUDGEON PIN D.18X36
30	90910000	3	BOCCOLA PIEDE DI BIELLA	CONROD BUSHING (SMALL END) S.70
31	90922200	3	SEMICUSC. TESTA BIELLA +0.50 -SUP.	UPPER HALF CONROD BUSHING +0.5 (BIG END) S.70
31	90922100	3	SEMICUSC. TESTA BIELLA +0.25 -SUP.	UPPER HALF CONROD BUSHING +0.25 (BIG END) S.70
31	90922000	3	SEMICUSC. TESTA BIELLA -SUP.	UPPER HALF CONROD BUSHING (BIG END) S.70
32	90922500	3	SEMICUSC. TESTA BIELLA +0.50 -INF.	LOWER HALF CONROD BUSHING +0.50 (BIG END) S.70

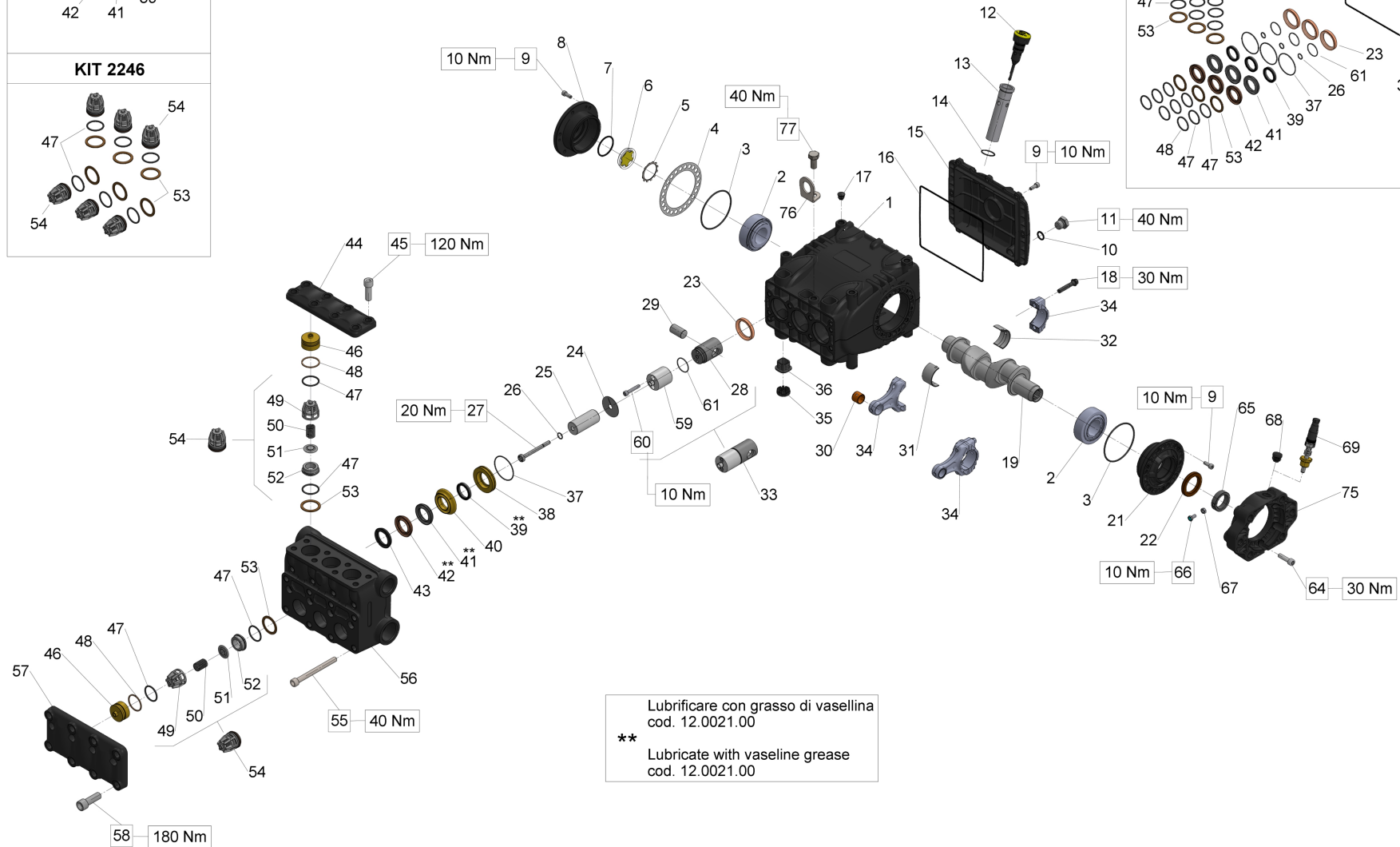
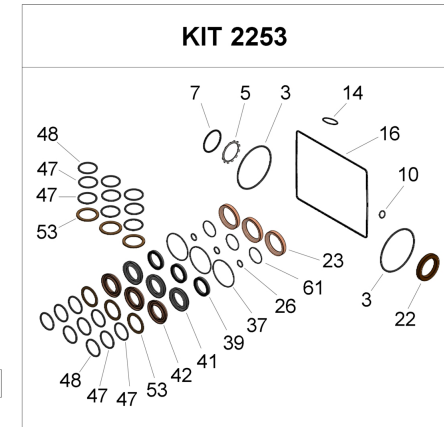
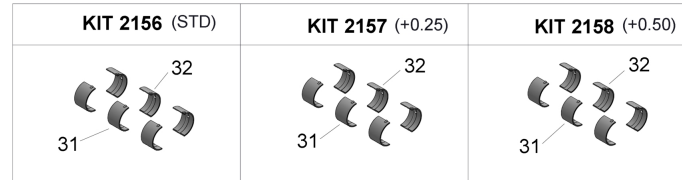
Albero maschio con linguetta + flangia A - GAS - Male shaft (key) - GAS + flange A - GAS

Ref.	Codice - Part n°	Qtà - Qty	Descrizione	Description
32	90922400	3	SEMICUSC. TESTA BIELLA +0.25 - INF.	LOWER HALF CONROD BUSHING +0.25 (BIG END) S.70
32	90922500	3	SEMICUSC. TESTA BIELLA +0.50 - INF.	LOWER HALF CONROD BUSHING +0.50 (BIG END) S.70
33	70606801	3	GRUPPO GUIDA PISTONE	PISTON GUIDE ASSY
34	70030501	3	BIELLA COMPLETA	CONNECTING ROD COMPLETE
35	71225951	3	CAPPUCCIO TAPPO CARTER	PLUG CAP
36	70222551	6	TAPPO CARTER	CRANKCASE PLUG
37	90362600	3	OR D.50,52X1,78 (2200)	O-RING D. 50,52X1,78 (2200)
38	70082270	3	ANELLO DI FONDO D.32	PACKING RETAINER D.32
39	90278000	3	ANELLO TEN.ALT.D.32X40X5,5 L.P.	PACKING D.32x40x5,5 L.P
40	70225270	3	ANELLO INTERMEDIO D.32	INTERMEDIATE RING D.32
41	90278400	3	ANELLO RESTOP D.32X44X5,5/3	RESTOP RING D. 32x44x5,5/3
42	90278800	3	ANELLO TEN.ALT.D.32X44X6/3.5HP	PACKING D.32X44
43	72100051	3	ANELLO DI TESTA PISTONE D.32	HEAD RING D.32
44	70225115	1	COPERCHIO VALVOLE MANDATA	OUTLET VALVE COVER KT
45	99429500	8	VITE TCEI M12X35 UNI4762 GEOMET 321 PLUS M	SCREW M12X35 UNI5931 12.31 DACR.
46	70225370	6	TAPPO VALVOLE ASP.MANDATA	VALVE PLUG
47	90386500	12	OR D.29,82X2,62 (3118)	O-RING 29,82X2,62 (3118)
48	90518000	6	ANELLO ANTIEST.D.32.4X36.5X1.5	ANTI-EXTR.RING D.32.4X36.5X1.5
49	36204751	6	GUIDA VALVOLA ASP. MANDATA	VALVE CAGE (70HT)
50	94745000	6	MOLLA DM 16X27,5 INOX	SPRING D. 16X27,5
51	36211766	6	VALVOLA SFERICA ASP. MANDATA	SPHERICAL VALVE
52	36204866	6	SEDE VALVOLA ASP. MANDATA	VALVE SEAT (70HT)
53	90517850	6	ANELLO ANTIEST. D.31X40X1.7	ANELLO ANTIEST. 31.0x40.0x1.7 (S.66)
54	36720801	6	GRUPPO VALVOLA A/M	INTAKE/DELIVERY VALVE KT SER.
55	99381600	4	VITE TCEI M10X110 UNI5931 8.8 ZINCATA	SCREW M10X110 UNI5931 8.8
56	70126615	1	TESTATA PER PISTONE D.32	MANIFOL FOR PISTON D.32 KT S
57	70225015	1	COPERCHIO VALVOLE ASPIRAZIONE	INLET VALVE COVER KT
58	99485000	8	VITE TCEI M14X40 UNI4762 GEOMET 321 PLUS M	SCREW M14X40 UNI5931 12.9 DACR.
59	70050266	3	STELO GUIDA PISTONE	PISTON GUIDE ROD
60	99192500	6	VITE TCEI M06X35 5931 A2-70	SCREW M06X35 5931 A2-70
61	90352800	3	OR D.29X1,5 (290-15)	O-RING D. 29.00x1.50 NBR 70SH
64	99308400	6	VITE TCEI M8X30 UNI5931 8.8 ZINCATA	SCREW M 8x30 UNI 5931
73	10067320	1	FLANGIA MOTORE IDR. TIPO "A"	FLANGE FOR HYDRAULIC MOTOR KE TYPE A
76	71223074	1	STAFFA DI SOLLEVAMENTO	STAFFA DI SOLLEVAMENTO
77	99426600	1	VITE TE M12X25-UNI5739 ZINC.	VITE TE M12X25-UNI5739 ZINC.
KIT2156	34215601	1	KIT 2156	KIT 2156*CONROD BUSHING

Albero maschio con linguetta + flangia A - GAS - Male shaft (key) - GAS + flange A - GAS

Ref.	Codice - Part n°	Qtà - Qty	Descrizione	Description
KIT2157	34215701	1	KIT 2157	KIT 2157*CONROD BUSHINGS +0,25
KIT2158	34215801	1	KIT 2158	KIT 2158*CONROD BUSHINGS +0,50
KIT2246	34224601	1	KIT 2246	KIT 2246 INTAKE/DELIVERY VALVE
KIT2248	34224801	1	KIT 2248	KIT 2248 PACKING D. 32
KIT2253	34225301	1	KIT 2253	KIT 2253 CPL.SEAL D.32

Albero cavo scanalato + flangia SAE B - GAS - Hollow shaft (spline) + SAE B flange - GAS



Lubrificare con grasso di vasellina
cod. 12.0021.00

**
Lubricate with vaseline grease
cod. 12.0021.00

Albero cavo scanalato + flangia SAE B - GAS - Hollow shaft (spline) + SAE B flange - GAS

Ref.	Codice - Part n°	Qtà - Qty	Descrizione	Description
1	70010022	1	CARTER POMPA	CRANKCASE
2	91847700	2	CUSC. A RULLI CONICI 35X72X28 - 33207/Q	TAPER ROLLER BEARING 33207/Q
3	90391500	2	ANELLO OR D.80,6X2,62 (BS642)	O-RING D. 80.6X2.62 (3318)
4	70220381	1	SPESSORE DI RASAMENTO 0.25 MM	SHIM 0.25 MM.
4	70220081	1	SPESSORE DI RASAMENTO 0.1 MM	SHIM 0.1 MM.
5	90075600	1	ANELLO ZJ45	CIRCLIP D.45 (ZJ45)
6	70211801	1	SPIA LIVELLO OLIO	OIL SIGHT GLASS
7	90387700	1	OR D.39,34X2,62 (3156)	O-RING 39,34X2,62 (3156)
8	70150122	1	COPERCHIO CUSCINETTO LATO SPIA	BEARING COVER (OIL GLASS SIDE)
9	99185400	20	VITE M6X16 5931 8.8 ZINC.	SCREW M6X16 UNI 5931 8.8 Z.
10	90383300	1	OR D.13,95X2,62 (3056)	O-RING 13,95X2,62 (3056)
11	98210050	1	TAPPO G3/8X13 TE22 ZINC.	PLUG G3/8x13 TE22
12	98211500	1	TAPPO CON ASTA D.21,5X70	OIL DIPSTICK D.21,5X70
13	72210695	1	TUBO PER ASTA LIVELLO OLIO	DIP STICK TUBE
14	90360400	1	OR D.25,12X1,78 (2100)	O-RING 25,12X1,78 (2100)
15	70160622	1	COPERCHIO CARTER	CRANKCASE COVER KT
16	90394200	1	OR D.190,17X2,62 (3750)	OR D.190.17X2.62 NBR 70SH
17	98200500	5	TAPPO PER FORO D.15	PLUG D. 15
18	99312300	6	VITE SERRAGGIO BIELLA M8X1X42	CONN.ROD BOLT M8X1X42
19	70020935	1	ALBERO A GOMITI C.26 HYDR. PACK	CRANKSHAFT C.26 HYP SAE-B
21	70150022	1	COPERCHIO CUSCINETTO LATO PTO	BEARING COVER (PTO SIDE)
22	90166800	1	ANELLO RAD.35X52X7	OIL SEAL D.35X52X7
23	90167700	3	ANELLO RAD.36X47X6/7.5	OIL SEAL D.36X47X7
24	96709900	3	ROSETTA D.10X45X1	WASHER D.10X45
25	70041309	3	PISTONE D32X63	PISTON D. 32X63
26	90358400	3	OR D.10,82X1,78 (2043)	O-RING D.10,82X1,78(2043)90SH
27	70224136	3	VITE FISSAGGIO PISTONE	PISTON BOLT
28	70050115	3	GUIDA PISTONE	PISTON GUIDE T.N.
29	97742000	3	SPINOTTO D.18X36	GUDGEON PIN D.18X36
30	90910000	3	BOCCOLA PIEDE DI BIELLA	CONROD BUSHING (SMALL END) S.70
31	90922200	3	SEMICUSC. TESTA BIELLA +0.50 -SUP.	UPPER HALF CONROD BUSHING +0.5 (BIG END) S.70
31	90922100	3	SEMICUSC. TESTA BIELLA +0.25 -SUP.	UPPER HALF CONROD BUSHING +0.25 (BIG END) S.70
31	90922000	3	SEMICUSC. TESTA BIELLA -SUP.	UPPER HALF CONROD BUSHING (BIG END) S.70
32	90922500	3	SEMICUSC. TESTA BIELLA +0.50 -INF.	LOWER HALF CONROD BUSHING +0.50 (BIG END) S.70
32	90922400	3	SEMICUSC. TESTA BIELLA +0.25 -INF.	LOWER HALF CONROD BUSHING +0.25 (BIG END) S.70
32	90922300	3	SEMICUSC. TESTA BIELLA-INF.	LOWER HALF CONROD BUSHING (BIG END) S.70

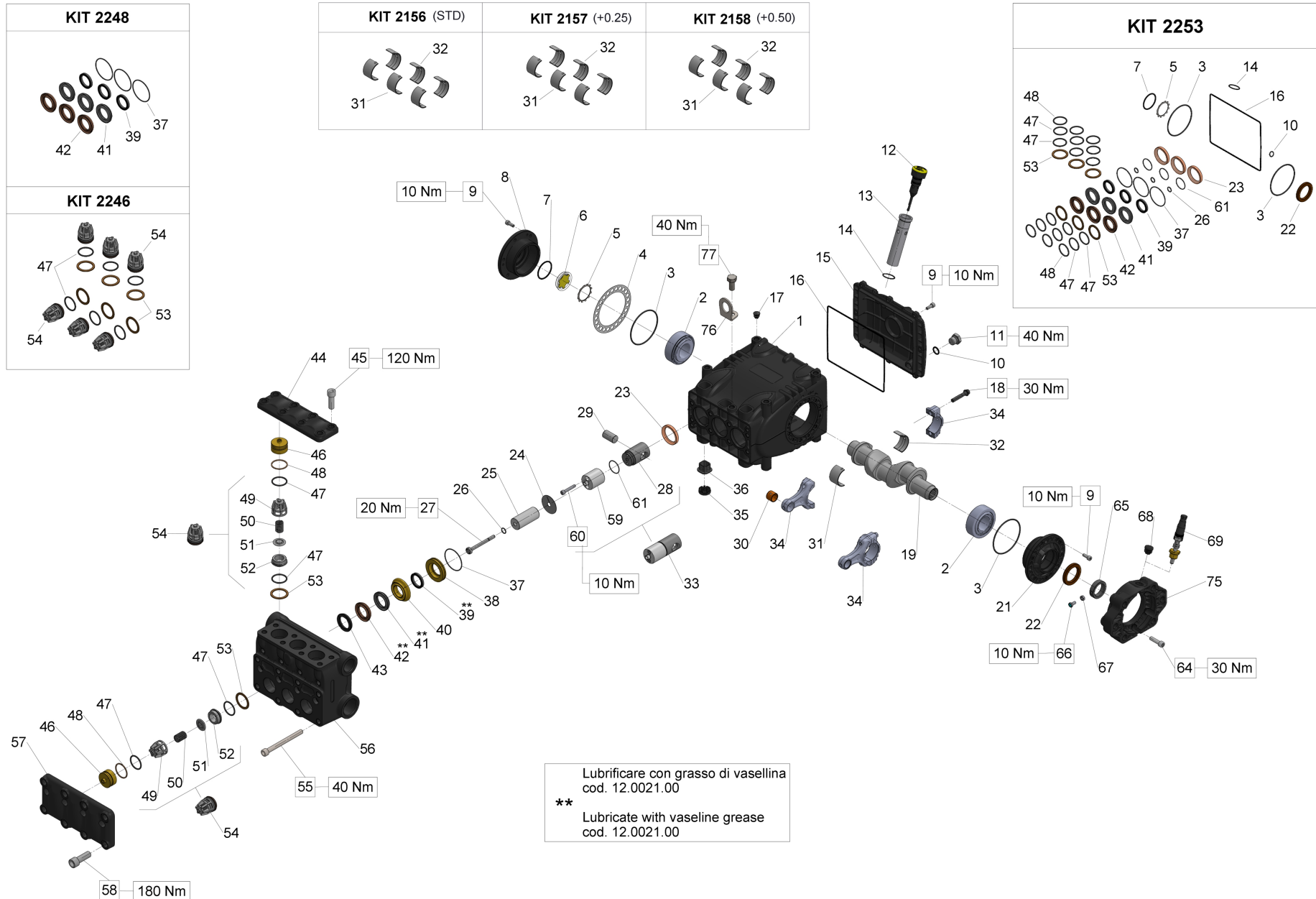
Albero cavo scanalato + flangia SAE B - GAS - Hollow shaft (spline) + SAE B flange - GAS

Ref.	Codice - Part n°	Qtà - Qty	Descrizione	Description
33	70606801	3	GRUPPO GUIDA PISTONE	PISTON GUIDE ASSY
34	70030501	3	BIELLA COMPLETA	CONNECTING ROD COMPLETE
35	71225951	3	CAPPUCCIO TAPPO CARTER	PLUG CAP
36	70222551	6	TAPPO CARTER	CRANKCASE PLUG
37	90362600	3	OR D.50,52X1,78 (2200)	O-RING D. 50,52X1,78 (2200)
38	70082270	3	ANELLO DI FONDO D.32	PACKING RETAINER D.32
39	90278000	3	ANELLO TEN.ALT.D.32X40X5,5L.P.	PACKING D.32x40x5,5 L.P
40	70225270	3	ANELLO INTERMEDIO D.32	INTERMEDIATE RING D.32
41	90278400	3	ANELLO RESTOP D.32X44X5,5/3	RESTOP RING D. 32x44x5,5/3
42	90278800	3	ANELLO TEN.ALT.D.32X44X6/3.5HP	PACKING D.32X44
43	72100051	3	ANELLO DI TESTA PISTONE D.32	HEAD RING D.32
44	70225115	1	COPERCHIO VALVOLE MANDATA	OUTLET VALVE COVER KT
45	99429500	8	VITE TCEI M12X35 UNI4762 GEOMET 321 PLUS M	SCREW M12X35 UNI5931 12.31 DACR.
46	70225370	6	TAPPO VALVOLE ASP.MANDATA	VALVE PLUG
47	90386500	12	OR D.29,82X2,62 (3118)	O-RING 29,82X2,62 (3118)
48	90518000	6	ANELLO ANTIEST.D.32.4X36.5X1.5	ANTI-EXTR.RING D.32.4X36.5X1.5
49	36204751	6	GUIDA VALVOLA ASP. MANDATA	VALVE CAGE (70HT)
50	94745000	6	MOLLA DM 16X27,5 INOX	SPRING D. 16X27,5
51	36211766	6	VALVOLA SFERICA ASP. MANDATA	SPHERICAL VALVE
52	36204866	6	SEDE VALVOLA ASP. MANDATA	VALVE SEAT (70HT)
53	90517850	6	ANELLO ANTIEST. D.31X40X1.7	ANELLO ANTIEST. 31.0x40.0x1.7 (S.66)
54	36720801	6	GRUPPO VALVOLA A/M	INTAKE/DELIVERY VALVE KT SER.
55	99381600	4	VITE TCEI M10X110 UNI5931 8.8 ZINCATA	SCREW M10X110 UNI5931 8.8
56	70126615	1	TESTATA PER PISTONE D.32	MANIFOL FOR PISTON D.32 KTS
57	70225015	1	COPERCHIO VALVOLE ASPIRAZIONE	INLET VALVE COVER KT
58	99485000	8	VITE TCEI M14X40 UNI4762 GEOMET 321 PLUS M	SCREW M14X40 UNI5931 12.9 DACR.
59	70050266	3	STELO GUIDA PISTONE	PISTON GUIDE ROD
60	99192500	6	VITE TCEI M06X35 5931 A2-70	SCREW M06X35 5931 A2-70
61	90352800	3	OR D.29X1,5 (290-15)	O-RING D. 29.00x1.50 NBR 70SH
64	99308400	6	VITE TCEI M8X30 UNI5931 8.8 ZINCATA	SCREW M 8x30 UNI 5931
65	70226771	1	ANELLO D.30 PER ALBERO HY-PACK SERIE 70	ANELLO PER ALBERO D.30 H.PACK
66	70227034	1	VITE TE M6X12 COMPLETA DI RIFRANGENTE	VITE M6X12 CON INCAVO COMPLETA
67	92202500	1	DADO M6x5 UNI5588 ZINC.	NUT M6 UNI 5588 6S
68	90206500	1	TAPPO PER FORO D.17 - TTN19	PLUG FOR BORE D.17 - TTN19
69	ZRPM1	1	DISPOSITIVO LETTORE GIRI POMPA	ZRPM1
75	10085322	1	FLANGIA MOT. IDR. SAE B	FLANGE FOR HYDRAULIC MOTOR SAE-B S.70

Albero cavo scanalato + flangia SAE B - GAS - Hollow shaft (spline) + SAE B flange - GAS

Ref.	Codice - Part n°	Qtà - Qty	Descrizione	Description
76	71223074	1	STAFFA DI SOLLEVAMENTO	STAFFA DI SOLLEVAMENTO
77	99426600	1	VITE TE M12X25-UNI5739 ZINC.	VITE TE M12X25-UNI5739 ZINC.
KIT2156	34215601	1	KIT 2156	KIT 2156*CONROD BUSHING
KIT2157	34215701	1	KIT 2157	KIT 2157*CONROD BUSHINGS +0,25
KIT2158	34215801	1	KIT 2158	KIT 2158*CONROD BUSHINGS +0,50
KIT2246	34224601	1	KIT 2246	KIT 2246 INTAKE/DELIVERY VALVE
KIT2248	34224801	1	KIT 2248	KIT 2248 PACKING D. 32
KIT2253	34225301	1	KIT 2253	KIT 2253 CPL.SEAL D.32

Albero cavo scanalato + flangia SAE B - NPT - Hollow shaft (spline) + SAE B flange - NPT



Albero cavo scanalato + flangia SAE B - NPT - Hollow shaft (spline) + SAE B flange - NPT

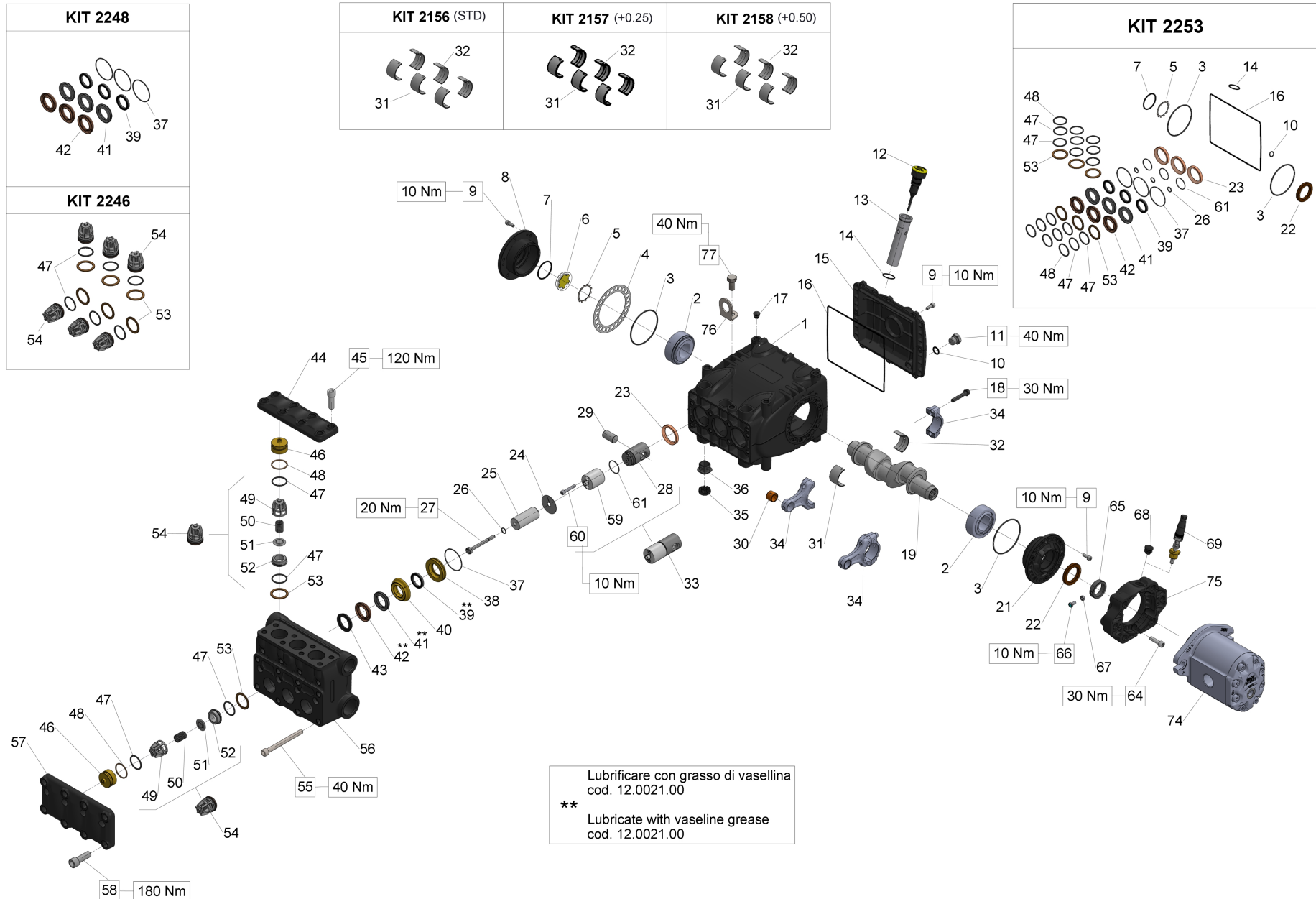
Ref.	Codice - Part n°	Qtà - Qty	Descrizione	Description
1	70010022	1	CARTER POMPA	CRANKCASE
2	91847700	2	CUSC. A RULLI CONICI 35X72X28 - 33207/Q	TAPER ROLLER BEARING 33207/Q
3	90391500	2	ANELLO OR D.80,6X2,62 (BS642)	O-RING D. 80.6X2.62 (3318)
4	70220381	1	SPESSORE DI RASAMENTO 0.25 MM	SHIM 0.25 MM.
4	70220081	1	SPESSORE DI RASAMENTO 0.1 MM	SHIM 0.1 MM.
5	90075600	1	ANELLO ZI45	CIRCLIP D.45 (ZI45)
6	70211801	1	SPIA LIVELLO OLIO	OIL SIGHT GLASS
7	90387700	1	OR D.39,34X2,62 (3156)	O-RING 39,34X2,62 (3156)
8	70150122	1	COPERCHIO CUSCINETTO LATO SPIA	BEARING COVER (OIL GLASS SIDE)
9	99185400	20	VITE M6X16 5931 8.8 ZINC.	SCREW M6X16 UNI 5931 8.8 Z.
10	90383300	1	OR D.13,95X2,62 (3056)	O-RING 13,95X2,62 (3056)
11	98210050	1	TAPPO G3/8X13 TE22 ZINC.	PLUG G3/8x13 TE22
12	98211500	1	TAPPO CON ASTA D.21,5X70	OIL DIPSTICK D.21,5X70
13	72210695	1	TUBO PER ASTA LIVELLO OLIO	DIP STICK TUBE
14	90360400	1	OR D.25,12X1,78 (2100)	O-RING 25,12X1,78 (2100)
15	70160622	1	COPERCHIO CARTER	CRANKCASE COVER KT
16	90394200	1	OR D.190,17X2,62 (3750)	OR D.190.17X2.62 NBR 70SH
17	98200500	5	TAPPO PER FORO D.15	PLUG D. 15
18	99312300	6	VITE SERRAGGIO BIELLA M8X1X42	CONN.ROD BOLT M8X1X42
19	70020935	1	ALBERO A GOMITI C.26 HYDR. PACK	CRANKSHAFT C.26 HYP SAE-B
21	70150022	1	COPERCHIO CUSCINETTO LATO PTO	BEARING COVER (PTO SIDE)
22	90166800	1	ANELLO RAD.35X52X7	OIL SEAL D.35X52X7
23	90167700	3	ANELLO RAD.36X47X6/7.5	OIL SEAL D.36X47X7
24	96709900	3	ROSETTA D.10X45X1	WASHER D.10X45
25	70041309	3	PISTONE D32X63	PISTON D. 32X63
26	90358400	3	OR D.10,82X1,78 (2043)	O-RING D.10,82X1,78(2043)90SH
27	70224136	3	VITE FISSAGGIO PISTONE	PISTON BOLT
28	70050115	3	GUIDA PISTONE	PISTON GUIDE T.N.
29	97742000	3	SPINOTTO D.18X36	GUDGEON PIN D.18X36
30	90910000	3	BOCCOLA PIEDE DI BIELLA	CONROD BUSHING (SMALL END) S.70
31	90922200	3	SEMICUSC. TESTA BIELLA +0.50 -SUP.	UPPER HALF CONROD BUSHING +0.5 (BIG END) S.70
31	90922100	3	SEMICUSC. TESTA BIELLA +0.25 -SUP.	UPPER HALF CONROD BUSHING +0.25 (BIG END) S.70
31	90922000	3	SEMICUSC. TESTA BIELLA -SUP.	UPPER HALF CONROD BUSHING (BIG END) S.70
32	90922500	3	SEMICUSC. TESTA BIELLA +0.50 -INF.	LOWER HALF CONROD BUSHING +0.50 (BIG END) S.70
32	90922400	3	SEMICUSC. TESTA BIELLA +0.25 -INF.	LOWER HALF CONROD BUSHING +0.25 (BIG END) S.70

Albero cavo scanalato + flangia SAE B - NPT - Hollow shaft (spline) + SAE B flange - NPT

Ref.	Codice - Part n°	Qtà - Qty	Descrizione	Description
32	90922500	3	SEMICUSC. TESTA BIELLA +0.50 - INF.	LOWER HALF CONROD BUSHING +0.50 (BIG END) S.70
33	70606801	3	GRUPPO GUIDA PISTONE	PISTON GUIDE ASSY
34	70030501	3	BIELLA COMPLETA	CONNECTING ROD COMPLETE
35	71225951	3	CAPPUCCIO TAPPO CARTER	PLUG CAP
36	70222551	6	TAPPO CARTER	CRANKCASE PLUG
37	90362600	3	OR D.50,52X1,78 (2200)	O-RING D. 50,52X1,78 (2200)
38	70082270	3	ANELLO DI FONDO D.32	PACKING RETAINER D.32
39	90278000	3	ANELLO TEN.ALT.D.32X40X5,5L.P.	PACKING D.32x40x5,5 L.P
40	70225270	3	ANELLO INTERMEDIO D.32	INTERMEDIATE RING D.32
41	90278400	3	ANELLO RESTOP D.32X44X5,5/3	RESTOP RING D. 32x44x5,5/3
42	90278800	3	ANELLO TEN.ALT.D.32X44X6/3.5HP	PACKING D.32X44
43	72100051	3	ANELLO DI TESTA PISTONE D.32	HEAD RING D.32
44	70225115	1	COPERCHIO VALVOLE MANDATA	OUTLET VALVE COVER KT
45	99429500	8	VITE TCEI M12X35 UNI4762 GEOMET 321 PLUS M	SCREW M12X35 UNI5931 12.31 DACR.
46	70225370	6	TAPPO VALVOLE ASP.MANDATA	VALVE PLUG
47	90386500	12	OR D.29,82X2,62 (3118)	O-RING 29,82X2,62 (3118)
48	90518000	6	ANELLO ANTIEST.D.32.4X36.5X1.5	ANTI-EXTR.RING D.32.4X36.5X1.5
49	36204751	6	GUIDA VALVOLA ASP. MANDATA	VALVE CAGE (70HT)
50	94745000	6	MOLLA DM 16X27,5 INOX	SPRING D. 16X27,5
51	36211766	6	VALVOLA SFERICA ASP. MANDATA	SPHERICAL VALVE
52	36204866	6	SEDE VALVOLA ASP. MANDATA	VALVE SEAT (70HT)
53	90517850	6	ANELLO ANTIEST. D.31X40X1.7	ANELLO ANTIEST. 31.0x40.0x1.7 (S.66)
54	36720801	6	GRUPPO VALVOLA A/M	INTAKE/DELIVERY VALVE KT SER.
55	99381600	4	VITE TCEI M10X110 UNI5931 8.8 ZINCATA	SCREW M10X110 UNI5931 8.8
56	70126915	1	TESTATA PER PISTONE D.32 NPT	MANIFOLD FOR PIST.D.32 NPT
57	70225015	1	COPERCHIO VALVOLE ASPIRAZIONE	INLET VALVE COVER KT
58	99485000	8	VITE TCEI M14X40 UNI4762 GEOMET 321 PLUS M	SCREW M14X40 UNI5931 12.9 DACR.
59	70050266	3	STELO GUIDA PISTONE	PISTON GUIDE ROD
60	99192500	6	VITE TCEI M06X35 5931 A2-70	SCREW M06X35 5931 A2-70
61	90352800	3	OR D.29X1,5 (290-15)	O-RING D. 29.00x1.50 NBR 70SH
64	99308400	6	VITE TCEI M8X30 UNI5931 8.8 ZINCATA	SCREW M 8x30 UNI 5931
65	70226771	1	ANELLO D.30 PER ALBERO HY-PACK SERIE 70	ANELLO PER ALBERO D.30 H.PACK
66	70227034	1	VITE TE M6X12 COMPLETA DI RIFRANGENTE	VITE M6X12 CON INCAVO COMPLETA
67	92202500	1	DADO M6x5 UNI5588 ZINC.	NUT M6 UNI 5588 6S
68	90206500	1	TAPPO PER FORO D.17 - TTN19	PLUG FOR BORE D.17 - TTN19
69	ZRPM1	1	DISPOSITIVO LETTORE GIRI POMPA	ZRPM1

Albero cavo scanalato + flangia SAE B - NPT - Hollow shaft (spline) + SAE B flange - NPT

Ref.	Codice - Part n°	Qtà - Qty	Descrizione	Description
75	10085322	1	FLANGIA MOT. IDR. SAE B	FLANGE FOR HYDRAULIC MOTOR SAE-B S.70
76	71223074	1	STAFFA DI SOLLEVAMENTO	STAFFA DI SOLLEVAMENTO
77	99426600	1	VITE TE M12X25-UNI5739 ZINC.	VITE TE M12X25-UNI5739 ZINC.
KIT2156	34215601	1	KIT 2156	KIT 2156*CONROD BUSHING
KIT2157	34215701	1	KIT 2157	KIT 2157*CONROD BUSHINGS +0,25
KIT2158	34215801	1	KIT 2158	KIT 2158*CONROD BUSHINGS +0,50
KIT2246	34224601	1	KIT 2246	KIT 2246 INTAKE/DELIVERY VALVE
KIT2248	34224801	1	KIT 2248	KIT 2248 PACKING D. 32
KIT2253	34225301	1	KIT 2253	KIT 2253 CPL.SEAL D.32



Versione Hy-Pack - GAS + motore a ingranaggi 70cc - Hy-Pack version - GAS + gear motor 70cc

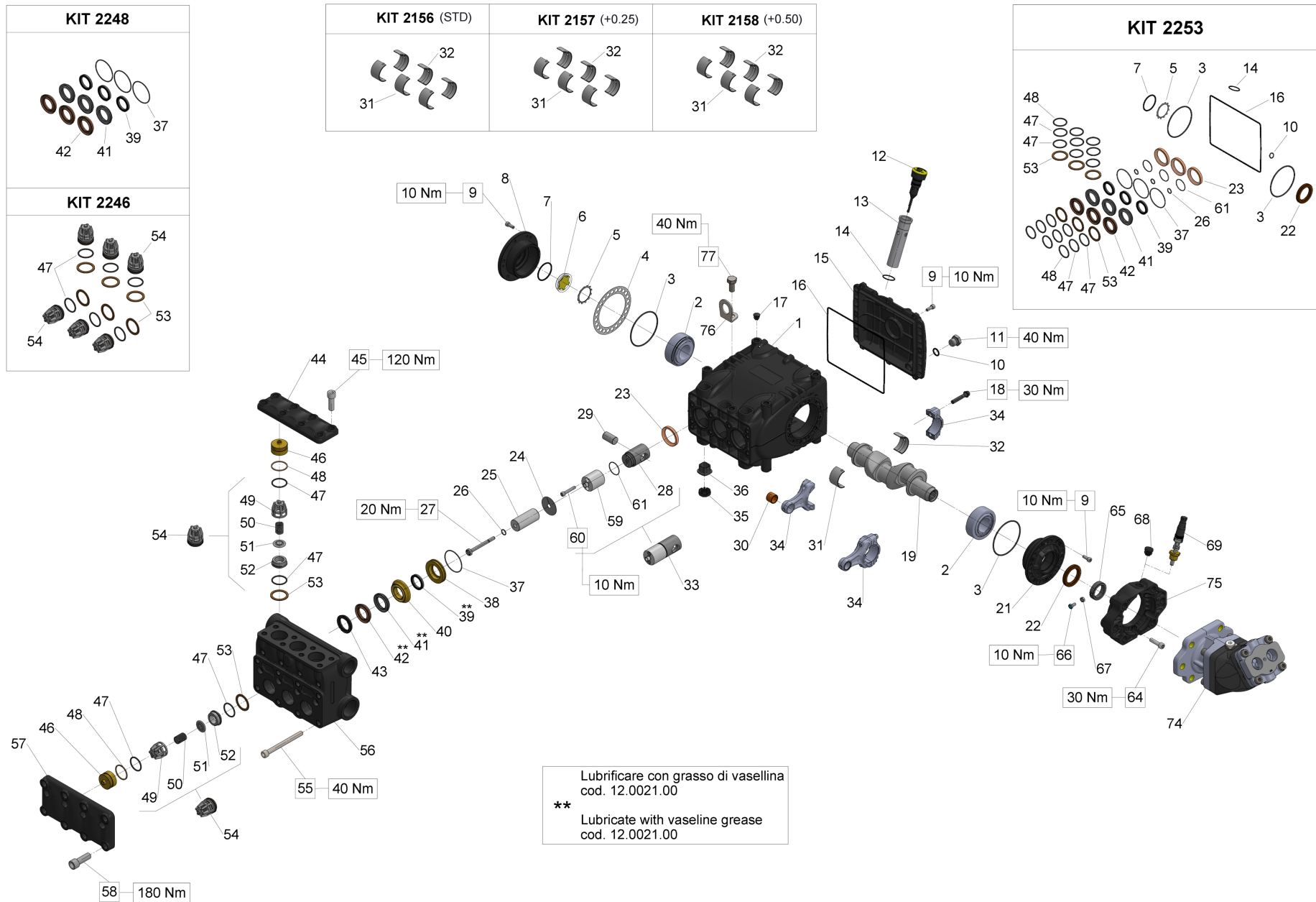
Ref.	Codice - Part n°	Qtà - Qty	Descrizione	Description
1	70010022	1	CARTER POMPA	CRANKCASE
2	91847700	2	CUSC. A RULLI CONICI 35X72X28 - 33207/Q	TAPER ROLLER BEARING 33207/Q
3	90391500	2	ANELLO OR D.80,6X2,62 (BS642)	O-RING D. 80.6X2.62 (3318)
4	70220381	1	SPESSORE DI RASAMENTO 0.25 MM	SHIM 0.25 MM.
4	70220081	1	SPESSORE DI RASAMENTO 0.1 MM	SHIM 0.1 MM.
5	90075600	1	ANELLO ZJ45	CIRCLIP D.45 (ZJ45)
6	70211801	1	SPIA LIVELLO OLIO	OIL SIGHT GLASS
7	90387700	1	OR D.39,34X2,62 (3156)	O-RING 39,34X2,62 (3156)
8	70150122	1	COPERCHIO CUSCINETTO LATO SPIA	BEARING COVER (OIL GLASS SIDE)
9	99185400	20	VITE M6X16 5931 8.8 ZINC.	SCREW M6X16 UNI 5931 8.8 Z.
10	90383300	1	OR D.13,95X2,62 (3056)	O-RING 13,95X2,62 (3056)
11	98210050	1	TAPPO G3/8X13 TE22 ZINC.	PLUG G3/8x13 TE22
12	98211500	1	TAPPO CON ASTA D.21,5X70	OIL DIPSTICK D.21,5X70
13	72210695	1	TUBO PER ASTA LIVELLO OLIO	DIP STICK TUBE
14	90360400	1	OR D.25,12X1,78 (2100)	O-RING 25,12X1,78 (2100)
15	70160622	1	COPERCHIO CARTER	CRANKCASE COVER KT
16	90394200	1	OR D.190,17X2,62 (3750)	OR D.190.17X2.62 NBR 70SH
17	98200500	5	TAPPO PER FORO D.15	PLUG D. 15
18	99312300	6	VITE SERRAGGIO BIELLA M8X1X42	CONN.ROD BOLT M8X1X42
19	70020935	1	ALBERO A GOMITI C.26 HYDR. PACK	CRANKSHAFT C.26 HYP SAE-B
21	70150022	1	COPERCHIO CUSCINETTO LATO PTO	BEARING COVER (PTO SIDE)
22	90166800	1	ANELLO RAD.35X52X7	OIL SEAL D.35X52X7
23	90167700	3	ANELLO RAD.36X47X6/7.5	OIL SEAL D.36X47X7
24	96709900	3	ROSETTA D.10X45X1	WASHER D.10X45
25	70041309	3	PISTONE D32X63	PISTON D. 32X63
26	90358400	3	OR D.10,82X1,78 (2043)	O-RING D.10,82X1,78(2043)90SH
27	70224136	3	VITE FISSAGGIO PISTONE	PISTON BOLT
28	70050115	3	GUIDA PISTONE	PISTON GUIDE T.N.
29	97742000	3	SPINOTTO D.18X36	GUDGEON PIN D.18X36
30	90910000	3	BOCCOLA PIEDE DI BIELLA	CONROD BUSHING (SMALL END) S.70
31	90922200	3	SEMICUSC. TESTA BIELLA +0.50 -SUP.	UPPER HALF CONROD BUSHING +0.5 (BIG END) S.70
31	90922100	3	SEMICUSC. TESTA BIELLA +0.25 -SUP.	UPPER HALF CONROD BUSHING +0.25 (BIG END) S.70
31	90922000	3	SEMICUSC. TESTA BIELLA -SUP.	UPPER HALF CONROD BUSHING (BIG END) S.70
32	90922500	3	SEMICUSC. TESTA BIELLA +0.50 -INF.	LOWER HALF CONROD BUSHING +0.50 (BIG END) S.70
32	90922400	3	SEMICUSC. TESTA BIELLA +0.25 -INF.	LOWER HALF CONROD BUSHING +0.25 (BIG END) S.70

Versione Hy-Pack - GAS + motore a ingranaggi 70cc - Hy-Pack version - GAS + gear motor 70cc

Ref.	Codice - Part n°	Qtà - Qty	Descrizione	Description
32	90922500	3	SEMICUSC. TESTA BIELLA +0.50 - INF.	LOWER HALF CONROD BUSHING +0.50 (BIG END) S.70
33	70606801	3	GRUPPO GUIDA PISTONE	PISTON GUIDE ASSY
34	70030501	3	BIELLA COMPLETA	CONNECTING ROD COMPLETE
35	71225951	3	CAPPUCCIO TAPPO CARTER	PLUG CAP
36	70222551	6	TAPPO CARTER	CRANKCASE PLUG
37	90362600	3	OR D.50,52X1,78 (2200)	O-RING D. 50,52X1,78 (2200)
38	70082270	3	ANELLO DI FONDO D.32	PACKING RETAINER D.32
39	90278000	3	ANELLO TEN.ALT.D.32X40X5,5L.P.	PACKING D.32x40x5,5 L.P
40	70225270	3	ANELLO INTERMEDIO D.32	INTERMEDIATE RING D.32
41	90278400	3	ANELLO RESTOP D.32X44X5,5/3	RESTOP RING D. 32x44x5,5/3
42	90278800	3	ANELLO TEN.ALT.D.32X44X6/3.5HP	PACKING D.32X44
43	72100051	3	ANELLO DI TESTA PISTONE D.32	HEAD RING D.32
44	70225115	1	COPERCHIO VALVOLE MANDATA	OUTLET VALVE COVER KT
45	99429500	8	VITE TCEI M12X35 UNI4762 GEOMET 321 PLUS M	SCREW M12X35 UNI5931 12.31 DACR.
46	70225370	6	TAPPO VALVOLE ASP.MANDATA	VALVE PLUG
47	90386500	12	OR D.29,82X2,62 (3118)	O-RING 29,82X2,62 (3118)
48	90518000	6	ANELLO ANTIEST.D.32.4X36.5X1.5	ANTI-EXTR.RING D.32.4X36.5X1.5
49	36204751	6	GUIDA VALVOLA ASP. MANDATA	VALVE CAGE (70HT)
50	94745000	6	MOLLA DM 16X27,5 INOX	SPRING D. 16X27,5
51	36211766	6	VALVOLA SFERICA ASP. MANDATA	SPHERICAL VALVE
52	36204866	6	SEDE VALVOLA ASP. MANDATA	VALVE SEAT (70HT)
53	90517850	6	ANELLO ANTIEST. D.31X40X1.7	ANELLO ANTIEST. 31.0x40.0x1.7 (S.66)
54	36720801	6	GRUPPO VALVOLA A/M	INTAKE/DELIVERY VALVE KT SER.
55	99381600	4	VITE TCEI M10X110 UNI5931 8.8 ZINCATA	SCREW M10X110 UNI5931 8.8
56	70126615	1	TESTATA PER PISTONE D.32	MANIFOL FOR PISTON D.32 KT S
57	70225015	1	COPERCHIO VALVOLE ASPIRAZIONE	INLET VALVE COVER KT
58	99485000	8	VITE TCEI M14X40 UNI4762 GEOMET 321 PLUS M	SCREW M14X40 UNI5931 12.9 DACR.
59	70050266	3	STELO GUIDA PISTONE	PISTON GUIDE ROD
60	99192500	6	VITE TCEI M06X35 5931 A2-70	SCREW M06X35 5931 A2-70
61	90352800	3	OR D.29X1,5 (290-15)	O-RING D. 29.00x1.50 NBR 70SH
64	99308400	6	VITE TCEI M8X30 UNI5931 8.8 ZINCATA	SCREW M 8x30 UNI 5931
65	70226771	1	ANELLO D.30 PER ALBERO HY-PACK SERIE 70	ANELLO PER ALBERO D.30 H.PACK
66	70227034	1	VITE TE M6X12 COMPLETA DI RIFRANGENTE	VITE M6X12 CON INCAVO COMPLETA
67	92202500	1	DADO M6x5 UNI5588 ZINC.	NUT M6 UNI 5588 6S
68	90206500	1	TAPPO PER FORO D.17 - TTN19	PLUG FOR BORE D.17 - TTN19
69	ZRPM1	1	DISPOSITIVO LETTORE GIRI POMPA	ZRPM1

Versione Hy-Pack - GAS + motore a ingranaggi 70cc - Hy-Pack version - GAS + gear motor 70cc

Ref.	Codice - Part n°	Qtà - Qty	Descrizione	Description
74	95118000	1	MOTORE INGR. 070R / S-B SCA / G	MOTORE INGR. 070R / S-B SCA / G
75	10085322	1	FLANGIA MOT. IDR. SAE B	FLANGE FOR HYDRAULIC MOTOR SAE-B S.70
76	71223074	1	STAFFA DI SOLLEVAMENTO	STAFFA DI SOLLEVAMENTO
77	99426600	1	VITE TE M12X25-UNI5739 ZINC.	VITE TE M12X25-UNI5739 ZINC.
KIT2156	34215601	1	KIT 2156	KIT 2156*CONROD BUSHING
KIT2157	34215701	1	KIT 2157	KIT 2157*CONROD BUSHINGS +0,25
KIT2158	34215801	1	KIT 2158	KIT 2158*CONROD BUSHINGS +0,50
KIT2246	34224601	1	KIT 2246	KIT 2246 INTAKE/DELIVERY VALVE
KIT2248	34224801	1	KIT 2248	KIT 2248 PACKING D. 32
KIT2253	34225301	1	KIT 2253	KIT 2253 CPL.SEAL D.32



Versione Hy-Pack - GAS + motore a pistoni 47cc - Hy-Pack version - GAS + piston motor 47cc

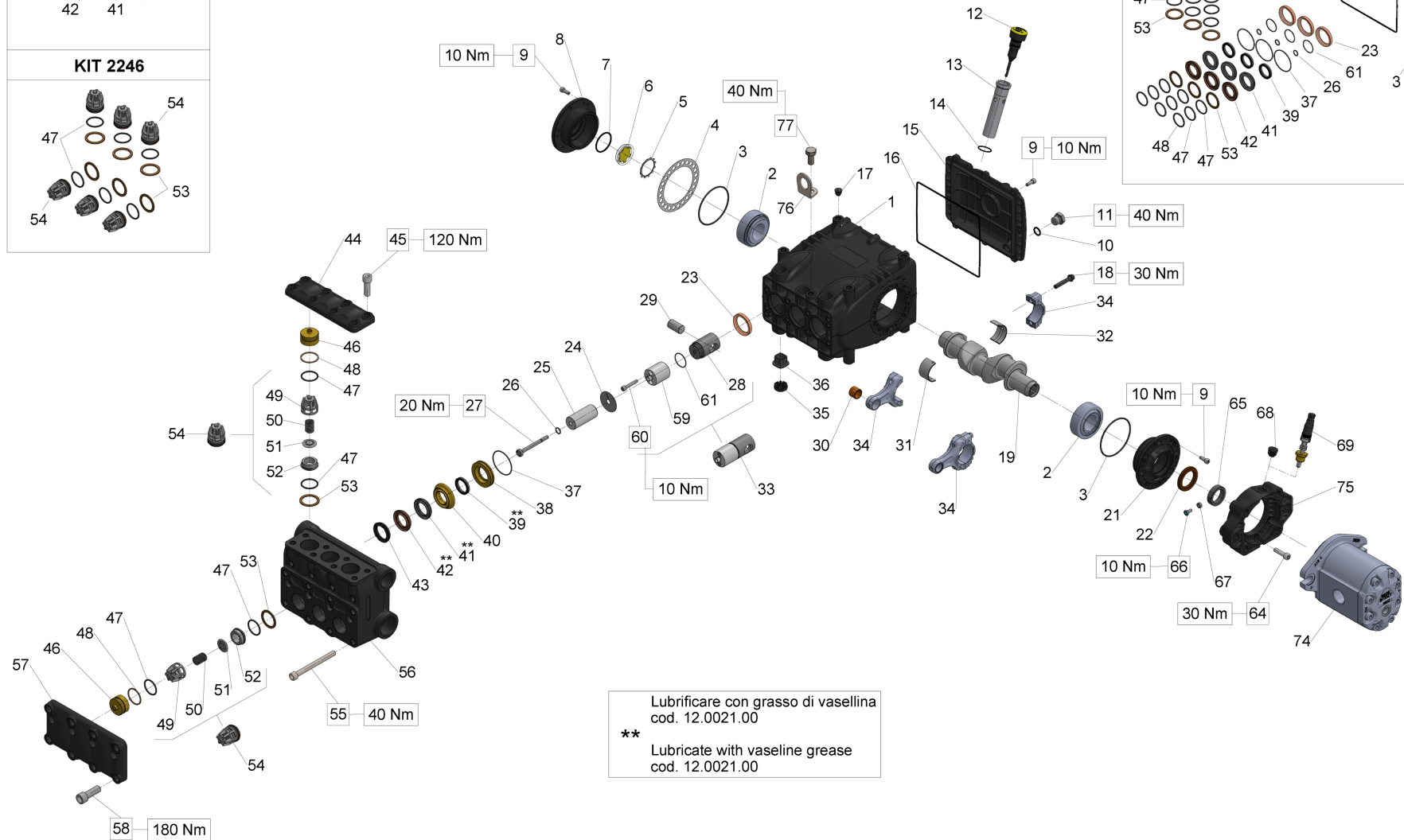
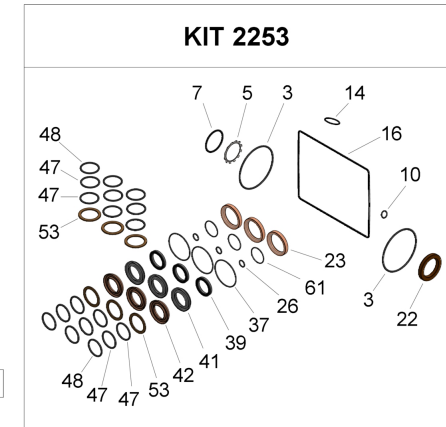
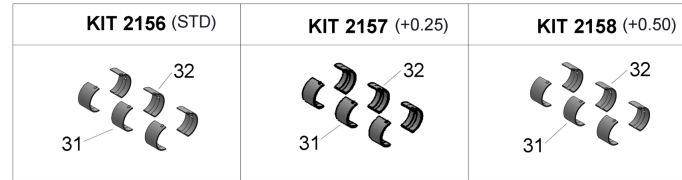
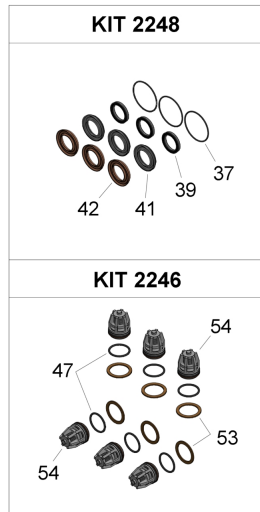
Ref.	Codice - Part n°	Qtà - Qty	Descrizione	Description
1	70010022	1	CARTER POMPA	CRANKCASE
2	91847700	2	CUSC. A RULLI CONICI 35X72X28 - 33207/Q	TAPER ROLLER BEARING 33207/Q
3	90391500	2	ANELLO OR D.80,6X2,62 (BS642)	O-RING D. 80.6X2.62 (3318)
4	70220381	1	SPESSORE DI RASAMENTO 0.25 MM	SHIM 0.25 MM.
4	70220081	1	SPESSORE DI RASAMENTO 0.1 MM	SHIM 0.1 MM.
5	90075600	1	ANELLO ZI45	CIRCLIP D.45 (ZI45)
6	70211801	1	SPIA LIVELLO OLIO	OIL SIGHT GLASS
7	90387700	1	OR D.39,34X2,62 (3156)	O-RING 39,34X2,62 (3156)
8	70150122	1	COPERCHIO CUSCINETTO LATO SPIA	BEARING COVER (OIL GLASS SIDE)
9	99185400	20	VITE M6X16 5931 8.8 ZINC.	SCREW M6X16 UNI 5931 8.8 Z.
10	90383300	1	OR D.13,95X2,62 (3056)	O-RING 13,95X2,62 (3056)
11	98210050	1	TAPPO G3/8X13 TE22 ZINC.	PLUG G3/8x13 TE22
12	98211500	1	TAPPO CON ASTA D.21,5X70	OIL DIPSTICK D.21,5X70
13	72210695	1	TUBO PER ASTA LIVELLO OLIO	DIP STICK TUBE
14	90360400	1	OR D.25,12X1,78 (2100)	O-RING 25,12X1,78 (2100)
15	70160622	1	COPERCHIO CARTER	CRANKCASE COVER KT
16	90394200	1	OR D.190,17X2,62 (3750)	OR D.190.17X2.62 NBR 70SH
17	98200500	5	TAPPO PER FORO D.15	PLUG D. 15
18	99312300	6	VITE SERRAGGIO BIELLA M8X1X42	CONN.ROD BOLT M8X1X42
19	70020935	1	ALBERO A GOMITI C.26 HYDR. PACK	CRANKSHAFT C.26 HYP SAE-B
21	70150022	1	COPERCHIO CUSCINETTO LATO PTO	BEARING COVER (PTO SIDE)
22	90166800	1	ANELLO RAD.35X52X7	OIL SEAL D.35X52X7
23	90167700	3	ANELLO RAD.36X47X6/7.5	OIL SEAL D.36X47X7
24	96709900	3	ROSETTA D.10X45X1	WASHER D.10X45
25	70041309	3	PISTONE D32X63	PISTON D. 32X63
26	90358400	3	OR D.10,82X1,78 (2043)	O-RING D.10,82X1,78(2043)90SH
27	70224136	3	VITE FISSAGGIO PISTONE	PISTON BOLT
28	70050115	3	GUIDA PISTONE	PISTON GUIDE T.N.
29	97742000	3	SPINOTTO D.18X36	GUDGEON PIN D.18X36
30	90910000	3	BOCCOLA PIEDE DI BIELLA	CONROD BUSHING (SMALL END) S.70
31	90922200	3	SEMICUSC. TESTA BIELLA +0.50 -SUP.	UPPER HALF CONROD BUSHING +0.5 (BIG END) S.70
31	90922100	3	SEMICUSC. TESTA BIELLA +0.25 -SUP.	UPPER HALF CONROD BUSHING +0.25 (BIG END) S.70
31	90922000	3	SEMICUSC. TESTA BIELLA -SUP.	UPPER HALF CONROD BUSHING (BIG END) S.70
32	90922500	3	SEMICUSC. TESTA BIELLA +0.50 -INF.	LOWER HALF CONROD BUSHING +0.50 (BIG END) S.70
32	90922400	3	SEMICUSC. TESTA BIELLA +0.25 -INF.	LOWER HALF CONROD BUSHING +0.25 (BIG END) S.70

Versione Hy-Pack - GAS + motore a pistoni 47cc - Hy-Pack version - GAS + piston motor 47cc

Ref.	Codice - Part n°	Qtà - Qty	Descrizione	Description
32	90922500	3	SEMICUSC. TESTA BIELLA +0.50 - INF.	LOWER HALF CONROD BUSHING +0.50 (BIG END) S.70
33	70606801	3	GRUPPO GUIDA PISTONE	PISTON GUIDE ASSY
34	70030501	3	BIELLA COMPLETA	CONNECTING ROD COMPLETE
35	71225951	3	CAPPUCCIO TAPPO CARTER	PLUG CAP
36	70222551	6	TAPPO CARTER	CRANKCASE PLUG
37	90362600	3	OR D.50,52X1,78 (2200)	O-RING D. 50,52X1,78 (2200)
38	70082270	3	ANELLO DI FONDO D.32	PACKING RETAINER D.32
39	90278000	3	ANELLO TEN.ALT.D.32X40X5,5L.P.	PACKING D.32x40x5,5 L.P
40	70225270	3	ANELLO INTERMEDIO D.32	INTERMEDIATE RING D.32
41	90278400	3	ANELLO RESTOP D.32X44X5,5/3	RESTOP RING D. 32x44x5,5/3
42	90278800	3	ANELLO TEN.ALT.D.32X44X6/3.5HP	PACKING D.32X44
43	72100051	3	ANELLO DI TESTA PISTONE D.32	HEAD RING D.32
44	70225115	1	COPERCHIO VALVOLE MANDATA	OUTLET VALVE COVER KT
45	99429500	8	VITE TCEI M12X35 UNI4762 GEOMET 321 PLUS M	SCREW M12X35 UNI5931 12.31 DACR.
46	70225370	6	TAPPO VALVOLE ASP.MANDATA	VALVE PLUG
47	90386500	12	OR D.29,82X2,62 (3118)	O-RING 29,82X2,62 (3118)
48	90518000	6	ANELLO ANTIEST.D.32.4X36.5X1.5	ANTI-EXTR.RING D.32.4X36.5X1.5
49	36204751	6	GUIDA VALVOLA ASP. MANDATA	VALVE CAGE (70HT)
50	94745000	6	MOLLA DM 16X27,5 INOX	SPRING D. 16X27,5
51	36211766	6	VALVOLA SFERICA ASP. MANDATA	SPHERICAL VALVE
52	36204866	6	SEDE VALVOLA ASP. MANDATA	VALVE SEAT (70HT)
53	90517850	6	ANELLO ANTIEST. D.31X40X1.7	ANELLO ANTIEST. 31.0x40.0x1.7 (S.66)
54	36720801	6	GRUPPO VALVOLA A/M	INTAKE/DELIVERY VALVE KT SER.
55	99381600	4	VITE TCEI M10X110 UNI5931 8.8 ZINCATA	SCREW M10X110 UNI5931 8.8
56	70126615	1	TESTATA PER PISTONE D.32	MANIFOL FOR PISTON D.32 KT S
57	70225015	1	COPERCHIO VALVOLE ASPIRAZIONE	INLET VALVE COVER KT
58	99485000	8	VITE TCEI M14X40 UNI4762 GEOMET 321 PLUS M	SCREW M14X40 UNI5931 12.9 DACR.
59	70050266	3	STELO GUIDA PISTONE	PISTON GUIDE ROD
60	99192500	6	VITE TCEI M06X35 5931 A2-70	SCREW M06X35 5931 A2-70
61	90352800	3	OR D.29X1,5 (290-15)	O-RING D. 29.00x1.50 NBR 70SH
64	99308400	6	VITE TCEI M8X30 UNI5931 8.8 ZINCATA	SCREW M 8x30 UNI 5931
65	70226771	1	ANELLO D.30 PER ALBERO HY-PACK SERIE 70	ANELLO PER ALBERO D.30 H.PACK
66	70227034	1	VITE TE M6X12 COMPLETA DI RIFRANGENTE	VITE M6X12 CON INCAVO COMPLETA
67	92202500	1	DADO M6x5 UNI5588 ZINC.	NUT M6 UNI 5588 6S
68	90206500	1	TAPPO PER FORO D.17 - TTN19	PLUG FOR BORE D.17 - TTN19
69	ZRPM1	1	DISPOSITIVO LETTORE GIRI POMPA	ZRPM1

Versione Hy-Pack - GAS + motore a pistoni 47cc - Hy-Pack version - GAS + piston motor 47cc

Ref.	Codice - Part n°	Qtà - Qty	Descrizione	Description
74	95150000	1	MOTORE PIST. 047R / S-B SCA / G	MOTORE PIST. 047R / S-B SCA / G
75	10085322	1	FLANGIA MOT. IDR. SAE B	FLANGE FOR HYDRAULIC MOTOR SAE-B S.70
76	71223074	1	STAFFA DI SOLLEVAMENTO	STAFFA DI SOLLEVAMENTO
77	99426600	1	VITE TE M12X25-UNI5739 ZINC.	VITE TE M12X25-UNI5739 ZINC.
KIT2156	34215601	1	KIT 2156	KIT 2156*CONROD BUSHING
KIT2157	34215701	1	KIT 2157	KIT 2157*CONROD BUSHINGS +0,25
KIT2158	34215801	1	KIT 2158	KIT 2158*CONROD BUSHINGS +0,50
KIT2246	34224601	1	KIT 2246	KIT 2246 INTAKE/DELIVERY VALVE
KIT2248	34224801	1	KIT 2248	KIT 2248 PACKING D. 32
KIT2253	34225301	1	KIT 2253	KIT 2253 CPL.SEAL D.32



Lubrificare con grasso di vasellina
cod. 12.0021.00

**
Lubricate with vaseline grease
cod. 12.0021.00

Versione Hy-Pack - GAS + motore a ingranaggi 62cc - Hy-Pack version - GAS + gear motor 62cc

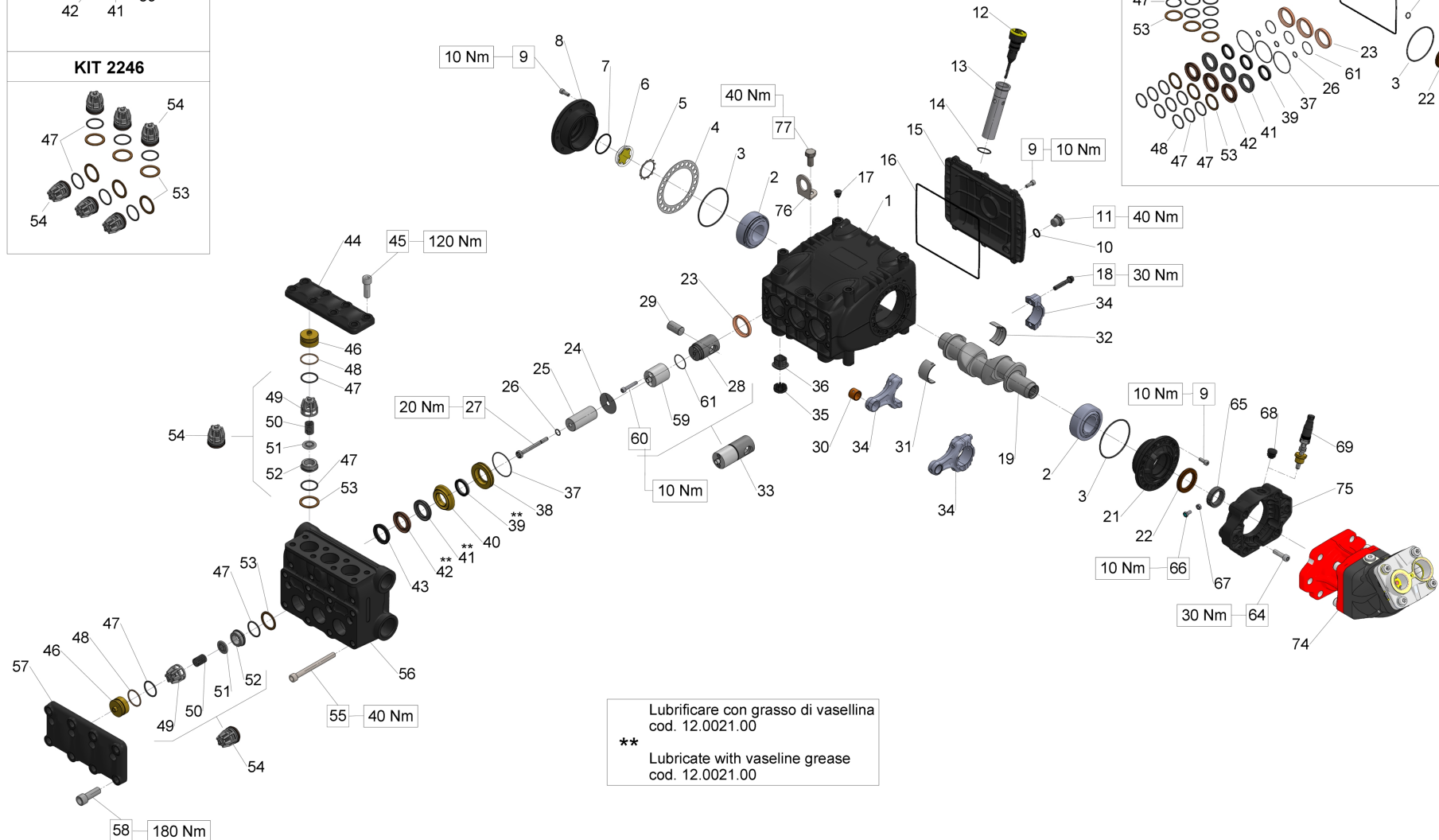
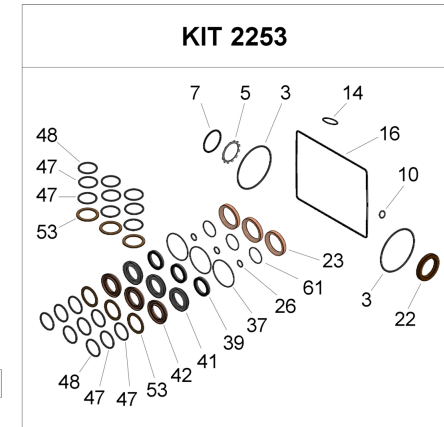
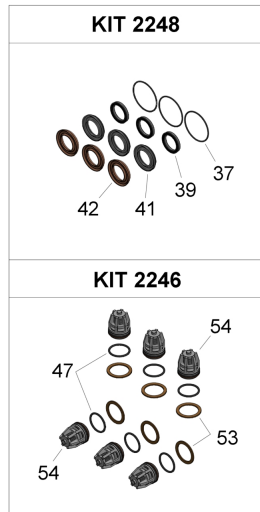
Ref.	Codice - Part n°	Qtà - Qty	Descrizione	Description
1	70010022	1	CARTER POMPA	CRANKCASE
2	91847700	2	CUSC. A RULLI CONICI 35X72X28 - 33207/Q	TAPER ROLLER BEARING 33207/Q
3	90391500	2	ANELLO OR D.80,6X2,62 (BS642)	O-RING D. 80.6X2.62 (3318)
4	70220381	1	SPESSORE DI RASAMENTO 0.25 MM	SHIM 0.25 MM.
4	70220081	1	SPESSORE DI RASAMENTO 0.1 MM	SHIM 0.1 MM.
5	90075600	1	ANELLO ZJ45	CIRCLIP D.45 (ZJ45)
6	70211801	1	SPIA LIVELLO OLIO	OIL SIGHT GLASS
7	90387700	1	OR D.39,34X2,62 (3156)	O-RING 39,34X2,62 (3156)
8	70150122	1	COPERCHIO CUSCINETTO LATO SPIA	BEARING COVER (OIL GLASS SIDE)
9	99185400	20	VITE M6X16 5931 8.8 ZINC.	SCREW M6X16 UNI 5931 8.8 Z.
10	90383300	1	OR D.13,95X2,62 (3056)	O-RING 13,95X2,62 (3056)
11	98210050	1	TAPPO G3/8X13 TE22 ZINC.	PLUG G3/8x13 TE22
12	98211500	1	TAPPO CON ASTA D.21,5X70	OIL DIPSTICK D.21,5X70
13	72210695	1	TUBO PER ASTA LIVELLO OLIO	DIP STICK TUBE
14	90360400	1	OR D.25,12X1,78 (2100)	O-RING 25,12X1,78 (2100)
15	70160622	1	COPERCHIO CARTER	CRANKCASE COVER KT
16	90394200	1	OR D.190,17X2,62 (3750)	OR D.190.17X2.62 NBR 70SH
17	98200500	5	TAPPO PER FORO D.15	PLUG D. 15
18	99312300	6	VITE SERRAGGIO BIELLA M8X1X42	CONN.ROD BOLT M8X1X42
19	70020935	1	ALBERO A GOMITI C.26 HYDR. PACK	CRANKSHAFT C.26 HYP SAE-B
21	70150022	1	COPERCHIO CUSCINETTO LATO PTO	BEARING COVER (PTO SIDE)
22	90166800	1	ANELLO RAD.35X52X7	OIL SEAL D.35X52X7
23	90167700	3	ANELLO RAD.36X47X6/7.5	OIL SEAL D.36X47X7
24	96709900	3	ROSETTA D.10X45X1	WASHER D.10X45
25	70041309	3	PISTONE D32X63	PISTON D. 32X63
26	90358400	3	OR D.10,82X1,78 (2043)	O-RING D.10,82X1,78(2043)90SH
27	70224136	3	VITE FISSAGGIO PISTONE	PISTON BOLT
28	70050115	3	GUIDA PISTONE	PISTON GUIDE T.N.
29	97742000	3	SPINOTTO D.18X36	GUDGEON PIN D.18X36
30	90910000	3	BOCCOLA PIEDE DI BIELLA	CONROD BUSHING (SMALL END) S.70
31	90922200	3	SEMICUSC. TESTA BIELLA +0.50 -SUP.	UPPER HALF CONROD BUSHING +0.5 (BIG END) S.70
31	90922100	3	SEMICUSC. TESTA BIELLA +0.25 -SUP.	UPPER HALF CONROD BUSHING +0.25 (BIG END) S.70
31	90922000	3	SEMICUSC. TESTA BIELLA -SUP.	UPPER HALF CONROD BUSHING (BIG END) S.70
32	90922500	3	SEMICUSC. TESTA BIELLA +0.50 -INF.	LOWER HALF CONROD BUSHING +0.50 (BIG END) S.70
32	90922400	3	SEMICUSC. TESTA BIELLA +0.25 -INF.	LOWER HALF CONROD BUSHING +0.25 (BIG END) S.70

Versione Hy-Pack - GAS + motore a ingranaggi 62cc - Hy-Pack version - GAS + gear motor 62cc

Ref.	Codice - Part n°	Qtà - Qty	Descrizione	Description
32	90922500	3	SEMICUSC. TESTA BIELLA +0.50 - INF.	LOWER HALF CONROD BUSHING +0.50 (BIG END) S.70
33	70606801	3	GRUPPO GUIDA PISTONE	PISTON GUIDE ASSY
34	70030501	3	BIELLA COMPLETA	CONNECTING ROD COMPLETE
35	71225951	3	CAPPUCCIO TAPPO CARTER	PLUG CAP
36	70222551	6	TAPPO CARTER	CRANKCASE PLUG
37	90362600	3	OR D.50,52X1,78 (2200)	O-RING D. 50,52X1,78 (2200)
38	70082270	3	ANELLO DI FONDO D.32	PACKING RETAINER D.32
39	90278000	3	ANELLO TEN.ALT.D.32X40X5,5L.P.	PACKING D.32x40x5,5 L.P
40	70225270	3	ANELLO INTERMEDIO D.32	INTERMEDIATE RING D.32
41	90278400	3	ANELLO RESTOP D.32X44X5,5/3	RESTOP RING D. 32x44x5,5/3
42	90278800	3	ANELLO TEN.ALT.D.32X44X6/3.5HP	PACKING D.32X44
43	72100051	3	ANELLO DI TESTA PISTONE D.32	HEAD RING D.32
44	70225115	1	COPERCHIO VALVOLE MANDATA	OUTLET VALVE COVER KT
45	99429500	8	VITE TCEI M12X35 UNI4762 GEOMET 321 PLUS M	SCREW M12X35 UNI5931 12.31 DACR.
46	70225370	6	TAPPO VALVOLE ASP.MANDATA	VALVE PLUG
47	90386500	12	OR D.29,82X2,62 (3118)	O-RING 29,82X2,62 (3118)
48	90518000	6	ANELLO ANTIEST.D.32.4X36.5X1.5	ANTI-EXTR.RING D.32.4X36.5X1.5
49	36204751	6	GUIDA VALVOLA ASP. MANDATA	VALVE CAGE (70HT)
50	94745000	6	MOLLA DM 16X27,5 INOX	SPRING D. 16X27,5
51	36211766	6	VALVOLA SFERICA ASP. MANDATA	SPHERICAL VALVE
52	36204866	6	SEDE VALVOLA ASP. MANDATA	VALVE SEAT (70HT)
53	90517850	6	ANELLO ANTIEST. D.31X40X1.7	ANELLO ANTIEST. 31.0x40.0x1.7 (S.66)
54	36720801	6	GRUPPO VALVOLA A/M	INTAKE/DELIVERY VALVE KT SER.
55	99381600	4	VITE TCEI M10X110 UNI5931 8.8 ZINCATA	SCREW M10X110 UNI5931 8.8
56	70126615	1	TESTATA PER PISTONE D.32	MANIFOL FOR PISTON D.32 KT S
57	70225015	1	COPERCHIO VALVOLE ASPIRAZIONE	INLET VALVE COVER KT
58	99485000	8	VITE TCEI M14X40 UNI4762 GEOMET 321 PLUS M	SCREW M14X40 UNI5931 12.9 DACR.
59	70050266	3	STELO GUIDA PISTONE	PISTON GUIDE ROD
60	99192500	6	VITE TCEI M06X35 5931 A2-70	SCREW M06X35 5931 A2-70
61	90352800	3	OR D.29X1,5 (290-15)	O-RING D. 29.00x1.50 NBR 70SH
64	99308400	6	VITE TCEI M8X30 UNI5931 8.8 ZINCATA	SCREW M 8x30 UNI 5931
65	70226771	1	ANELLO D.30 PER ALBERO HY-PACK SERIE 70	ANELLO PER ALBERO D.30 H.PACK
66	70227034	1	VITE TE M6X12 COMPLETA DI RIFRANGENTE	VITE M6X12 CON INCAVO COMPLETA
67	92202500	1	DADO M6x5 UNI5588 ZINC.	NUT M6 UNI 5588 6S
68	90206500	1	TAPPO PER FORO D.17 - TTN19	PLUG FOR BORE D.17 - TTN19
69	ZRPM1	1	DISPOSITIVO LETTORE GIRI POMPA	ZRPM1

Versione Hy-Pack - GAS + motore a ingranaggi 62cc - Hy-Pack version - GAS + gear motor 62cc

Ref.	Codice - Part n°	Qtà - Qty	Descrizione	Description
74	95116000	1	MOTORE INGR. 62R / S-B SCA / G	GEAR MOTOR 062R / S-B SCA / G
75	10085322	1	FLANGIA MOT. IDR. SAE B	FLANGE FOR HYDRAULIC MOTOR SAE-B S.70
76	71223074	1	STAFFA DI SOLLEVAMENTO	STAFFA DI SOLLEVAMENTO
77	99426600	1	VITE TE M12X25-UNI5739 ZINC.	VITE TE M12X25-UNI5739 ZINC.
KIT2156	34215601	1	KIT 2156	KIT 2156*CONROD BUSHING
KIT2157	34215701	1	KIT 2157	KIT 2157*CONROD BUSHINGS +0,25
KIT2158	34215801	1	KIT 2158	KIT 2158*CONROD BUSHINGS +0,50
KIT2246	34224601	1	KIT 2246	KIT 2246 INTAKE/DELIVERY VALVE
KIT2248	34224801	1	KIT 2248	KIT 2248 PACKING D. 32
KIT2253	34225301	1	KIT 2253	KIT 2253 CPL.SEAL D.32



Versione Hy-Pack - GAS + motore a pistoni 64cc - Hy-Pack version - GAS + piston motor 64cc

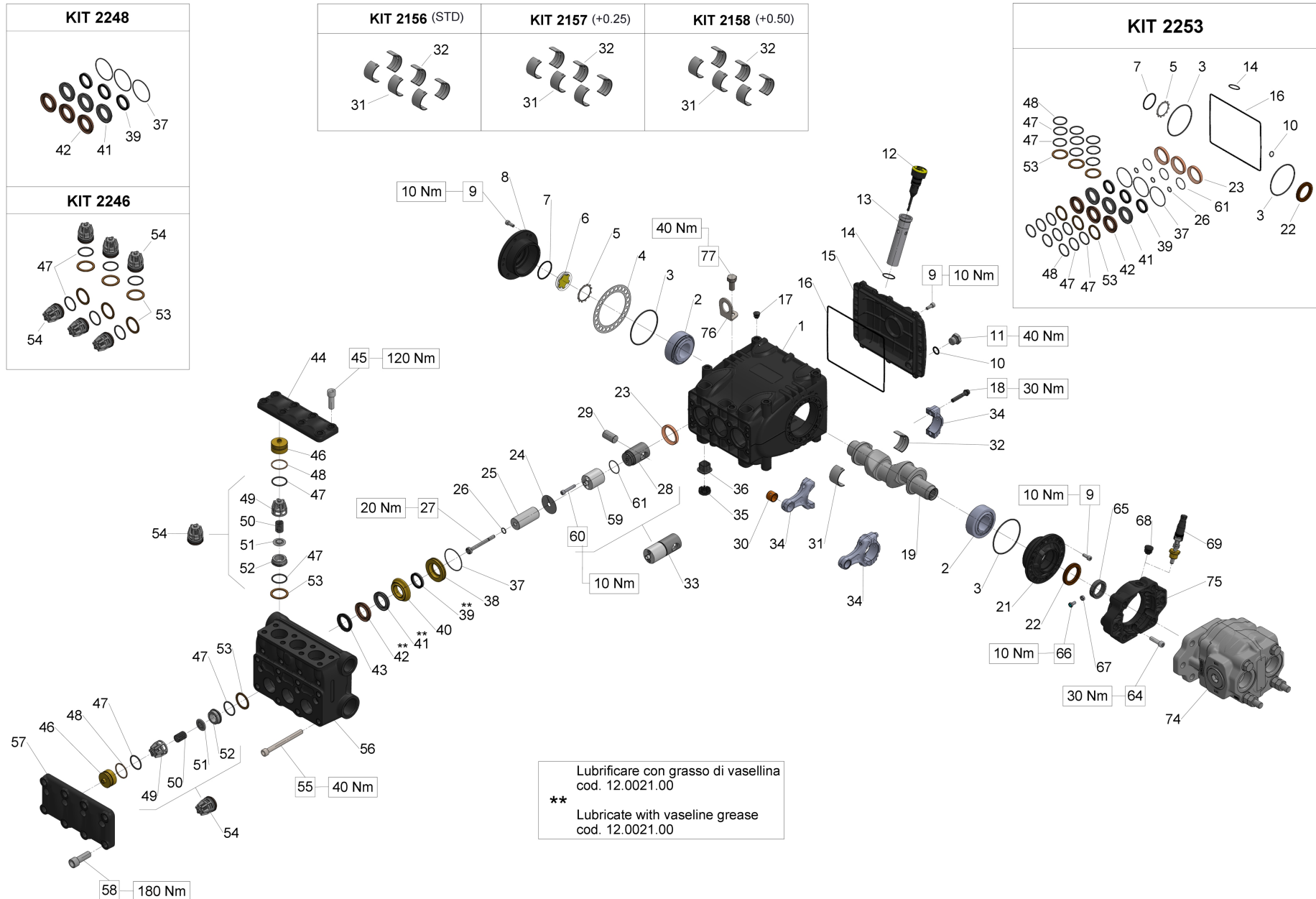
Ref.	Codice - Part n°	Qtà - Qty	Descrizione	Description
1	70010022	1	CARTER POMPA	CRANKCASE
2	91847700	2	CUSC. A RULLI CONICI 35X72X28 - 33207/Q	TAPER ROLLER BEARING 33207/Q
3	90391500	2	ANELLO OR D.80,6X2,62 (BS642)	O-RING D. 80.6X2.62 (3318)
4	70220381	1	SPESSORE DI RASAMENTO 0.25 MM	SHIM 0.25 MM.
4	70220081	1	SPESSORE DI RASAMENTO 0.1 MM	SHIM 0.1 MM.
5	90075600	1	ANELLO ZI45	CIRCLIP D.45 (ZI45)
6	70211801	1	SPIA LIVELLO OLIO	OIL SIGHT GLASS
7	90387700	1	OR D.39,34X2,62 (3156)	O-RING 39,34X2,62 (3156)
8	70150122	1	COPERCHIO CUSCINETTO LATO SPIA	BEARING COVER (OIL GLASS SIDE)
9	99185400	20	VITE M6X16 5931 8.8 ZINC.	SCREW M6X16 UNI 5931 8.8 Z.
10	90383300	1	OR D.13,95X2,62 (3056)	O-RING 13,95X2,62 (3056)
11	98210050	1	TAPPO G3/8X13 TE22 ZINC.	PLUG G3/8x13 TE22
12	98211500	1	TAPPO CON ASTA D.21,5X70	OIL DIPSTICK D.21,5X70
13	72210695	1	TUBO PER ASTA LIVELLO OLIO	DIP STICK TUBE
14	90360400	1	OR D.25,12X1,78 (2100)	O-RING 25,12X1,78 (2100)
15	70160622	1	COPERCHIO CARTER	CRANKCASE COVER KT
16	90394200	1	OR D.190,17X2,62 (3750)	OR D.190.17X2.62 NBR 70SH
17	98200500	5	TAPPO PER FORO D.15	PLUG D. 15
18	99312300	6	VITE SERRAGGIO BIELLA M8X1X42	CONN.ROD BOLT M8X1X42
19	70020935	1	ALBERO A GOMITI C.26 HYDR. PACK	CRANKSHAFT C.26 HYP SAE-B
21	70150022	1	COPERCHIO CUSCINETTO LATO PTO	BEARING COVER (PTO SIDE)
22	90166800	1	ANELLO RAD.35X52X7	OIL SEAL D.35X52X7
23	90167700	3	ANELLO RAD.36X47X6/7.5	OIL SEAL D.36X47X7
24	96709900	3	ROSETTA D.10X45X1	WASHER D.10X45
25	70041309	3	PISTONE D32X63	PISTON D. 32X63
26	90358400	3	OR D.10,82X1,78 (2043)	O-RING D.10,82X1,78(2043)90SH
27	70224136	3	VITE FISSAGGIO PISTONE	PISTON BOLT
28	70050115	3	GUIDA PISTONE	PISTON GUIDE T.N.
29	97742000	3	SPINOTTO D.18X36	GUDGEON PIN D.18X36
30	90910000	3	BOCCOLA PIEDE DI BIELLA	CONROD BUSHING (SMALL END) S.70
31	90922200	3	SEMICUSC. TESTA BIELLA +0.50 -SUP.	UPPER HALF CONROD BUSHING +0.5 (BIG END) S.70
31	90922100	3	SEMICUSC. TESTA BIELLA +0.25 -SUP.	UPPER HALF CONROD BUSHING +0.25 (BIG END) S.70
31	90922000	3	SEMICUSC. TESTA BIELLA -SUP.	UPPER HALF CONROD BUSHING (BIG END) S.70
32	90922500	3	SEMICUSC. TESTA BIELLA +0.50 -INF.	LOWER HALF CONROD BUSHING +0.50 (BIG END) S.70
32	90922400	3	SEMICUSC. TESTA BIELLA +0.25 -INF.	LOWER HALF CONROD BUSHING +0.25 (BIG END) S.70

Versione Hy-Pack - GAS + motore a pistoni 64cc - Hy-Pack version - GAS + piston motor 64cc

Ref.	Codice - Part n°	Qtà - Qty	Descrizione	Description
32	90922500	3	SEMICUSC. TESTA BIELLA +0.50 - INF.	LOWER HALF CONROD BUSHING +0.50 (BIG END) S.70
33	70606801	3	GRUPPO GUIDA PISTONE	PISTON GUIDE ASSY
34	70030501	3	BIELLA COMPLETA	CONNECTING ROD COMPLETE
35	71225951	3	CAPPUCCIO TAPPO CARTER	PLUG CAP
36	70222551	6	TAPPO CARTER	CRANKCASE PLUG
37	90362600	3	OR D.50,52X1,78 (2200)	O-RING D. 50,52X1,78 (2200)
38	70082270	3	ANELLO DI FONDO D.32	PACKING RETAINER D.32
39	90278000	3	ANELLO TEN.ALT.D.32X40X5,5L.P.	PACKING D.32x40x5,5 L.P
40	70225270	3	ANELLO INTERMEDIO D.32	INTERMEDIATE RING D.32
41	90278400	3	ANELLO RESTOP D.32X44X5,5/3	RESTOP RING D. 32x44x5,5/3
42	90278800	3	ANELLO TEN.ALT.D.32X44X6/3.5HP	PACKING D.32X44
43	72100051	3	ANELLO DI TESTA PISTONE D.32	HEAD RING D.32
44	70225115	1	COPERCHIO VALVOLE MANDATA	OUTLET VALVE COVER KT
45	99429500	8	VITE TCEI M12X35 UNI4762 GEOMET 321 PLUS M	SCREW M12X35 UNI5931 12.31 DACR.
46	70225370	6	TAPPO VALVOLE ASP.MANDATA	VALVE PLUG
47	90386500	12	OR D.29,82X2,62 (3118)	O-RING 29,82X2,62 (3118)
48	90518000	6	ANELLO ANTIEST.D.32.4X36.5X1.5	ANTI-EXTR.RING D.32.4X36.5X1.5
49	36204751	6	GUIDA VALVOLA ASP. MANDATA	VALVE CAGE (70HT)
50	94745000	6	MOLLA DM 16X27,5 INOX	SPRING D. 16X27,5
51	36211766	6	VALVOLA SFERICA ASP. MANDATA	SPHERICAL VALVE
52	36204866	6	SEDE VALVOLA ASP. MANDATA	VALVE SEAT (70HT)
53	90517850	6	ANELLO ANTIEST. D.31X40X1.7	ANELLO ANTIEST. 31.0x40.0x1.7 (S.66)
54	36720801	6	GRUPPO VALVOLA A/M	INTAKE/DELIVERY VALVE KT SER.
55	99381600	4	VITE TCEI M10X110 UNI5931 8.8 ZINCATA	SCREW M10X110 UNI5931 8.8
56	70126615	1	TESTATA PER PISTONE D.32	MANIFOL FOR PISTON D.32 KT S
57	70225015	1	COPERCHIO VALVOLE ASPIRAZIONE	INLET VALVE COVER KT
58	99485000	8	VITE TCEI M14X40 UNI4762 GEOMET 321 PLUS M	SCREW M14X40 UNI5931 12.9 DACR.
59	70050266	3	STELO GUIDA PISTONE	PISTON GUIDE ROD
60	99192500	6	VITE TCEI M06X35 5931 A2-70	SCREW M06X35 5931 A2-70
61	90352800	3	OR D.29X1,5 (290-15)	O-RING D. 29.00x1.50 NBR 70SH
64	99308400	6	VITE TCEI M8X30 UNI5931 8.8 ZINCATA	SCREW M 8x30 UNI 5931
65	70226771	1	ANELLO D.30 PER ALBERO HY-PACK SERIE 70	ANELLO PER ALBERO D.30 H.PACK
66	70227034	1	VITE TE M6X12 COMPLETA DI RIFRANGENTE	VITE M6X12 CON INCAVO COMPLETA
67	92202500	1	DADO M6x5 UNI5588 ZINC.	NUT M6 UNI 5588 6S
68	90206500	1	TAPPO PER FORO D.17 - TTN19	PLUG FOR BORE D.17 - TTN19
69	ZRPM1	1	DISPOSITIVO LETTORE GIRI POMPA	ZRPM1

Versione Hy-Pack - GAS + motore a pistoni 64cc - Hy-Pack version - GAS + piston motor 64cc

Ref.	Codice - Part n°	Qtà - Qty	Descrizione	Description
74	95152150	1	MOTORE PIST. 064R / S-B SCA / G	PISTON MOTOR 064R / S-B SCA / G
75	10085322	1	FLANGIA MOT. IDR. SAE B	FLANGE FOR HYDRAULIC MOTOR SAE-B S.70
76	71223074	1	STAFFA DI SOLLEVAMENTO	STAFFA DI SOLLEVAMENTO
77	99426600	1	VITE TE M12X25-UNI5739 ZINC.	VITE TE M12X25-UNI5739 ZINC.
KIT2156	34215601	1	KIT 2156	KIT 2156*CONROD BUSHING
KIT2157	34215701	1	KIT 2157	KIT 2157*CONROD BUSHINGS +0,25
KIT2158	34215801	1	KIT 2158	KIT 2158*CONROD BUSHINGS +0,50
KIT2246	34224601	1	KIT 2246	KIT 2246 INTAKE/DELIVERY VALVE
KIT2248	34224801	1	KIT 2248	KIT 2248 PACKING D. 32
KIT2253	34225301	1	KIT 2253	KIT 2253 CPL.SEAL D.32



Versione Hy-Pack - GAS + motore a ingranaggi 48cc - Hy-Pack versione - GAS + gear motor 48cc

Ref.	Codice - Part n°	Qtà - Qty	Descrizione	Description
1	70010022	1	CARTER POMPA	CRANKCASE
2	91847700	2	CUSC. A RULLI CONICI 35X72X28 - 33207/Q	TAPER ROLLER BEARING 33207/Q
3	90391500	2	ANELLO OR D.80,6X2,62 (BS642)	O-RING D. 80.6X2.62 (3318)
4	70220381	1	SPESSORE DI RASAMENTO 0.25 MM	SHIM 0.25 MM.
4	70220081	1	SPESSORE DI RASAMENTO 0.1 MM	SHIM 0.1 MM.
5	90075600	1	ANELLO ZJ45	CIRCLIP D.45 (ZJ45)
6	70211801	1	SPIA LIVELLO OLIO	OIL SIGHT GLASS
7	90387700	1	OR D.39,34X2,62 (3156)	O-RING 39,34X2,62 (3156)
8	70150122	1	COPERCHIO CUSCINETTO LATO SPIA	BEARING COVER (OIL GLASS SIDE)
9	99185400	20	VITE M6X16 5931 8.8 ZINC.	SCREW M6X16 UNI 5931 8.8 Z.
10	90383300	1	OR D.13,95X2,62 (3056)	O-RING 13,95X2,62 (3056)
11	98210050	1	TAPPO G3/8X13 TE22 ZINC.	PLUG G3/8x13 TE22
12	98211500	1	TAPPO CON ASTA D.21,5X70	OIL DIPSTICK D.21,5X70
13	72210695	1	TUBO PER ASTA LIVELLO OLIO	DIP STICK TUBE
14	90360400	1	OR D.25,12X1,78 (2100)	O-RING 25,12X1,78 (2100)
15	70160622	1	COPERCHIO CARTER	CRANKCASE COVER KT
16	90394200	1	OR D.190,17X2,62 (3750)	OR D.190.17X2.62 NBR 70SH
17	98200500	5	TAPPO PER FORO D.15	PLUG D. 15
18	99312300	6	VITE SERRAGGIO BIELLA M8X1X42	CONN.ROD BOLT M8X1X42
19	70020935	1	ALBERO A GOMITI C.26 HYDR. PACK	CRANKSHAFT C.26 HYP SAE-B
21	70150022	1	COPERCHIO CUSCINETTO LATO PTO	BEARING COVER (PTO SIDE)
22	90166800	1	ANELLO RAD.35X52X7	OIL SEAL D.35X52X7
23	90167700	3	ANELLO RAD.36X47X6/7.5	OIL SEAL D.36X47X7
24	96709900	3	ROSETTA D.10X45X1	WASHER D.10X45
25	70041309	3	PISTONE D32X63	PISTON D. 32X63
26	90358400	3	OR D.10,82X1,78 (2043)	O-RING D.10,82X1,78(2043)90SH
27	70224136	3	VITE FISSAGGIO PISTONE	PISTON BOLT
28	70050115	3	GUIDA PISTONE	PISTON GUIDE T.N.
29	97742000	3	SPINOTTO D.18X36	GUDGEON PIN D.18X36
30	90910000	3	BOCCOLA PIEDE DI BIELLA	CONROD BUSHING (SMALL END) S.70
31	90922200	3	SEMICUSC. TESTA BIELLA +0.50 -SUP.	UPPER HALF CONROD BUSHING +0.5 (BIG END) S.70
31	90922100	3	SEMICUSC. TESTA BIELLA +0.25 -SUP.	UPPER HALF CONROD BUSHING +0.25 (BIG END) S.70
31	90922000	3	SEMICUSC. TESTA BIELLA -SUP.	UPPER HALF CONROD BUSHING (BIG END) S.70
32	90922500	3	SEMICUSC. TESTA BIELLA +0.50 -INF.	LOWER HALF CONROD BUSHING +0.50 (BIG END) S.70
32	90922400	3	SEMICUSC. TESTA BIELLA +0.25 -INF.	LOWER HALF CONROD BUSHING +0.25 (BIG END) S.70

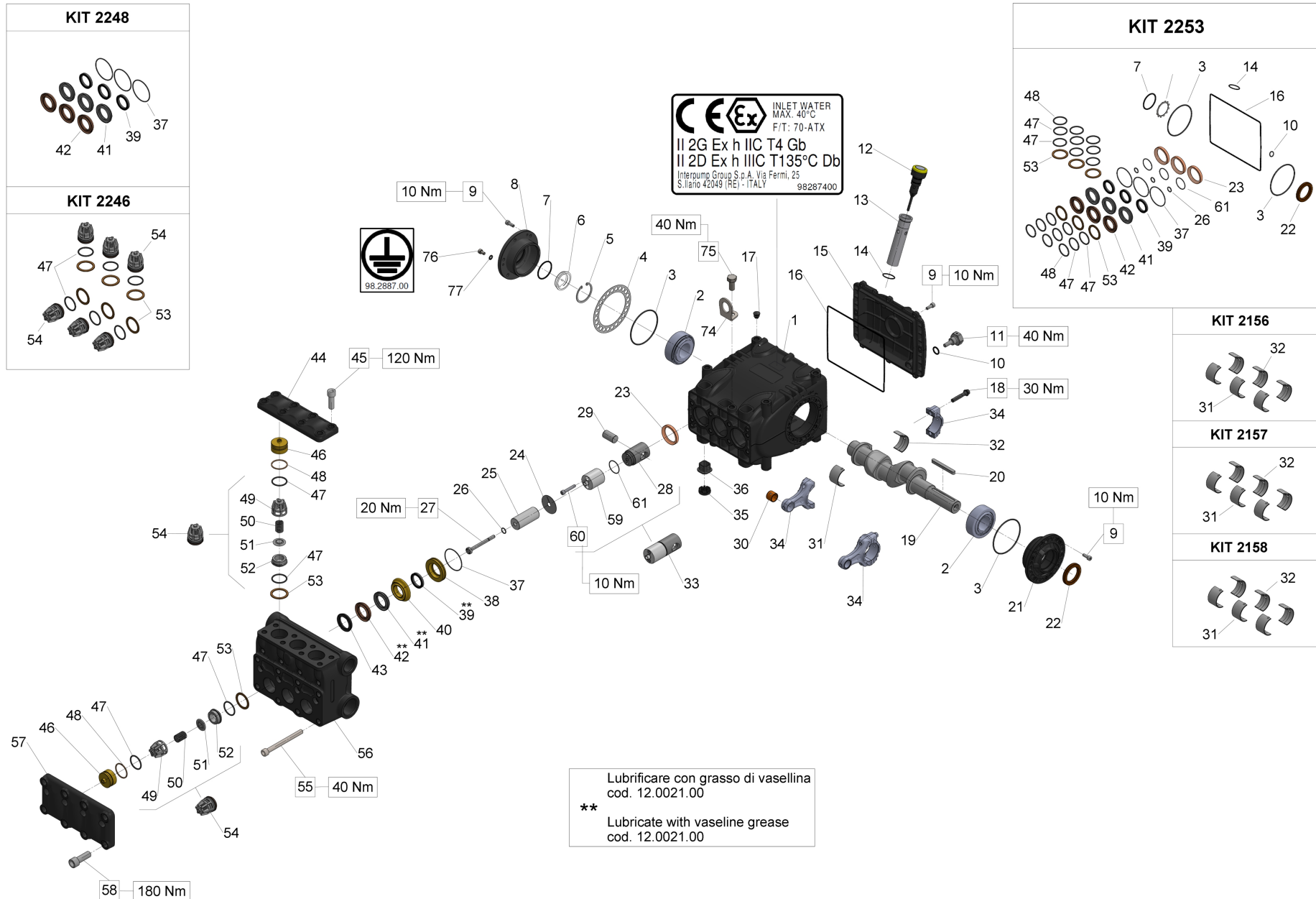
Versione Hy-Pack - GAS + motore a ingranaggi 48cc - Hy-Pack versione - GAS + gear motor 48cc

Ref.	Codice - Part n°	Qtà - Qty	Descrizione	Description
32	90922500	3	SEMICUSC. TESTA BIELLA +0.50 - INF.	LOWER HALF CONROD BUSHING +0.50 (BIG END) S.70
33	70606801	3	GRUPPO GUIDA PISTONE	PISTON GUIDE ASSY
34	70030501	3	BIELLA COMPLETA	CONNECTING ROD COMPLETE
35	71225951	3	CAPPUCCIO TAPPO CARTER	PLUG CAP
36	70222551	6	TAPPO CARTER	CRANKCASE PLUG
37	90362600	3	OR D.50,52X1,78 (2200)	O-RING D. 50,52X1,78 (2200)
38	70082270	3	ANELLO DI FONDO D.32	PACKING RETAINER D.32
39	90278000	3	ANELLO TEN.ALT.D.32X40X5,5L.P.	PACKING D.32x40x5,5 L.P
40	70225270	3	ANELLO INTERMEDIO D.32	INTERMEDIATE RING D.32
41	90278400	3	ANELLO RESTOP D.32X44X5,5/3	RESTOP RING D. 32x44x5,5/3
42	90278800	3	ANELLO TEN.ALT.D.32X44X6/3.5HP	PACKING D.32X44
43	72100051	3	ANELLO DI TESTA PISTONE D.32	HEAD RING D.32
44	70225115	1	COPERCHIO VALVOLE MANDATA	OUTLET VALVE COVER KT
45	99429500	8	VITE TCEI M12X35 UNI4762 GEOMET 321 PLUS M	SCREW M12X35 UNI5931 12.31 DACR.
46	70225370	6	TAPPO VALVOLE ASP.MANDATA	VALVE PLUG
47	90386500	12	OR D.29,82X2,62 (3118)	O-RING 29,82X2,62 (3118)
48	90518000	6	ANELLO ANTIEST.D.32.4X36.5X1.5	ANTI-EXTR.RING D.32.4X36.5X1.5
49	36204751	6	GUIDA VALVOLA ASP. MANDATA	VALVE CAGE (70HT)
50	94745000	6	MOLLA DM 16X27,5 INOX	SPRING D. 16X27,5
51	36211766	6	VALVOLA SFERICA ASP. MANDATA	SPHERICAL VALVE
52	36204866	6	SEDE VALVOLA ASP. MANDATA	VALVE SEAT (70HT)
53	90517850	6	ANELLO ANTIEST. D.31X40X1.7	ANELLO ANTIEST. 31.0x40.0x1.7 (S.66)
54	36720801	6	GRUPPO VALVOLA A/M	INTAKE/DELIVERY VALVE KT SER.
55	99381600	4	VITE TCEI M10X110 UNI5931 8.8 ZINCATA	SCREW M10X110 UNI5931 8.8
56	70126615	1	TESTATA PER PISTONE D.32	MANIFOL FOR PISTON D.32 KT S
57	70225015	1	COPERCHIO VALVOLE ASPIRAZIONE	INLET VALVE COVER KT
58	99485000	8	VITE TCEI M14X40 UNI4762 GEOMET 321 PLUS M	SCREW M14X40 UNI5931 12.9 DACR.
59	70050266	3	STELO GUIDA PISTONE	PISTON GUIDE ROD
60	99192500	6	VITE TCEI M06X35 5931 A2-70	SCREW M06X35 5931 A2-70
61	90352800	3	OR D.29X1,5 (290-15)	O-RING D. 29.00x1.50 NBR 70SH
64	99308400	6	VITE TCEI M8X30 UNI5931 8.8 ZINCATA	SCREW M 8x30 UNI 5931
65	70226771	1	ANELLO D.30 PER ALBERO HY-PACK SERIE 70	ANELLO PER ALBERO D.30 H.PACK
66	70227034	1	VITE TE M6X12 COMPLETA DI RIFRANGENTE	VITE M6X12 CON INCAVO COMPLETA
67	92202500	1	DADO M6x5 UNI5588 ZINC.	NUT M6 UNI 5588 6S
68	90206500	1	TAPPO PER FORO D.17 - TTN19	PLUG FOR BORE D.17 - TTN19
69	ZRPM1	1	DISPOSITIVO LETTORE GIRI POMPA	ZRPM1

Versione Hy-Pack - GAS + motore a ingranaggi 48cc - Hy-Pack versione - GAS + gear motor 48cc

Ref.	Codice - Part n°	Qtà - Qty	Descrizione	Description
74	95115000	1	MOTORE INGR. 48R / S-B SCA / S	GEAR MOTOR 048R / S-B SCA / S
75	10085322	1	FLANGIA MOT. IDR. SAE B	FLANGE FOR HYDRAULIC MOTOR SAE-B S.70
76	71223074	1	STAFFA DI SOLLEVAMENTO	STAFFA DI SOLLEVAMENTO
77	99426600	1	VITE TE M12X25-UNI5739 ZINC.	VITE TE M12X25-UNI5739 ZINC.
KIT2156	34215601	1	KIT 2156	KIT 2156*CONROD BUSHING
KIT2157	34215701	1	KIT 2157	KIT 2157*CONROD BUSHINGS +0,25
KIT2158	34215801	1	KIT 2158	KIT 2158*CONROD BUSHINGS +0,50
KIT2246	34224601	1	KIT 2246	KIT 2246 INTAKE/DELIVERY VALVE
KIT2248	34224801	1	KIT 2248	KIT 2248 PACKING D. 32
KIT2253	34225301	1	KIT 2253	KIT 2253 CPL.SEAL D.32

Albero maschio con linguetta - GAS - ATEX - Male shaft (key) - GAS - ATEX



Albero maschio con linguetta - GAS - ATEX - Male shaft (key) - GAS - ATEX

Ref.	Codice - Part n°	Qtà - Qty	Descrizione	Description
1	70010022	1	CARTER POMPA	CRANKCASE
2	91847700	2	CUSC. A RULLI CONICI 35X72X28 - 33207/Q	TAPER ROLLER BEARING 33207/Q
3	90391500	2	ANELLO OR D.80,6X2,62 (BS642)	O-RING D. 80.6X2.62 (3318)
4	70220381	1	SPESSORE DI RASAMENTO 0.25 MM	SHIM 0.25 MM.
4	70220081	1	SPESSORE DI RASAMENTO 0.1 MM	SHIM 0.1 MM.
5	90075500	1	ANELLO SEEGER PER FORO D.45	STOP RING J45 UNI7437
6	70211751	1	VETRINO PER SPIA LIVELLO OLIO	
7	90387700	1	OR D.39,34X2,62 (3156)	O-RING 39,34X2,62 (3156)
8	70150622	1	COPERCHIO CUSCINETTO LATO SPIA	COPERCHIO CUSCINETTO LATO SPIA ATEX
9	99185400	20	VITE M6X16 5931 8.8 ZINC.	SCREW M6X16 UNI 5931 8.8 Z.
10	90383300	1	OR D.13,95X2,62 (3056)	O-RING 13,95X2,62 (3056)
11	98210080	1	TAPPO G3/8X13 PER SONDAD D.6 SS	PLUG G 3/8 X 13 SS
12	98211600	1	TAPPO CON ASTA D.21.5X70	ASTA LIVELLO OLIO D.21.5x70 ATEX (S.70)
13	72210695	1	TUBO PER ASTA LIVELLO OLIO	DIP STICK TUBE
14	90360400	1	OR D.25,12X1,78 (2100)	O-RING 25,12X1,78 (2100)
15	70160622	1	COPERCHIO CARTER	CRANKCASE COVER KT
16	90394200	1	OR D.190,17X2,62 (3750)	OR D.190.17X2.62 NBR 70SH
17	98200500	5	TAPPO PER FORO D.15	PLUG D. 15
18	99312300	6	VITE SERRAGGIO BIELLA M8X1X42	CONN.ROD BOLT M8X1X42
19	70020635	1	ALBERO A GOMITI C.26	CRANKSHAFT C.26
20	91490000	1	LINGUETTA 8X7X70 UNI 6604	KEY 8h9X7X70 UNI 6604/A
21	70150022	1	COPERCHIO CUSCINETTO LATO PTO	BEARING COVER (PTO SIDE)
22	90166800	1	ANELLO RAD.35X52X7	OIL SEAL D.35X52X7
23	90167700	3	ANELLO RAD.36X47X6/7.5	OIL SEAL D.36X47X7
24	96709900	3	ROSETTA D.10X45X1	WASHER D.10X45
25	70041309	3	PISTONE D32X63	PISTON D. 32X63
26	90358400	3	OR D.10,82X1,78 (2043)	O-RING D.10,82X1,78(2043)90SH
27	70224136	3	VITE FISSAGGIO PISTONE	PISTON BOLT
28	70050115	3	GUIDA PISTONE	PISTON GUIDE T.N.
29	97742000	3	SPINOTTO D.18X36	GUDGEON PIN D.18X36
30	90910000	3	BOCCOLA PIEDE DI BIELLA	CONROD BUSHING (SMALL END) S.70
31	90922200	3	SEMICUSC. TESTA BIELLA +0.50 -SUP.	UPPER HALF CONROD BUSHING +0.5 (BIG END) S.70
31	90922100	3	SEMICUSC. TESTA BIELLA +0.25 -SUP.	UPPER HALF CONROD BUSHING +0.25 (BIG END) S.70
31	90922000	3	SEMICUSC. TESTA BIELLA -SUP.	UPPER HALF CONROD BUSHING (BIG END) S.70
32	90922500	3	SEMICUSC. TESTA BIELLA +0.50 -INF.	LOWER HALF CONROD BUSHING +0.50 (BIG END) S.70
32	90922400	3	SEMICUSC. TESTA BIELLA +0.25 -INF.	LOWER HALF CONROD BUSHING +0.25 (BIG END) S.70

Albero maschio con linguetta - GAS - ATEX - Male shaft (key) - GAS - ATEX

Ref.	Codice - Part n°	Qtà - Qty	Descrizione	Description
32	90922500	3	SEMICUSC. TESTA BIELLA +0.50 - INF.	LOWER HALF CONROD BUSHING +0.50 (BIG END) S.70
33	70606801	3	GRUPPO GUIDA PISTONE	PISTON GUIDE ASSY
34	70030501	3	BIELLA COMPLETA	CONNECTING ROD COMPLETE
35	71225951	3	CAPPUCCIO TAPPO CARTER	PLUG CAP
36	70222551	6	TAPPO CARTER	CRANKCASE PLUG
37	90362600	3	OR D.50,52X1,78 (2200)	O-RING D. 50,52X1,78 (2200)
38	70082270	3	ANELLO DI FONDO D.32	PACKING RETAINER D.32
39	90278000	3	ANELLO TEN.ALT.D.32X40X5,5L.P.	PACKING D.32x40x5,5 L.P
40	70225270	3	ANELLO INTERMEDIO D.32	INTERMEDIATE RING D.32
41	90278400	3	ANELLO RESTOP D.32X44X5,5/3	RESTOP RING D. 32x44x5,5/3
42	90278800	3	ANELLO TEN.ALT.D.32X44X6/3.5HP	PACKING D.32X44
43	72100051	3	ANELLO DI TESTA PISTONE D.32	HEAD RING D.32
44	70225115	1	COPERCHIO VALVOLE MANDATA	OUTLET VALVE COVER KT
45	99429500	8	VITE TCEI M12X35 UNI4762 GEOMET 321 PLUS M	SCREW M12X35 UNI5931 12.31 DACR.
46	70225370	6	TAPPO VALVOLE ASP.MANDATA	VALVE PLUG
47	90386500	12	OR D.29,82X2,62 (3118)	O-RING 29,82X2,62 (3118)
48	90518000	6	ANELLO ANTIEST.D.32.4X36.5X1.5	ANTI-EXTR.RING D.32.4X36.5X1.5
49	36204751	6	GUIDA VALVOLA ASP. MANDATA	VALVE CAGE (70HT)
50	94745000	6	MOLLA DM 16X27,5 INOX	SPRING D. 16X27,5
51	36211766	6	VALVOLA SFERICA ASP. MANDATA	SPHERICAL VALVE
52	36204866	6	SEDE VALVOLA ASP. MANDATA	VALVE SEAT (70HT)
53	90517850	6	ANELLO ANTIEST. D.31X40X1.7	ANELLO ANTIEST. 31.0x40.0x1.7 (S.66)
54	36720801	6	GRUPPO VALVOLA A/M	INTAKE/DELIVERY VALVE KT SER.
55	99381600	4	VITE TCEI M10X110 UNI5931 8.8 ZINCATA	SCREW M10X110 UNI5931 8.8
56	70126615	1	TESTATA PER PISTONE D.32	MANIFOL FOR PISTON D.32 KT S
57	70225015	1	COPERCHIO VALVOLE ASPIRAZIONE	INLET VALVE COVER KT
58	99485000	8	VITE TCEI M14X40 UNI4762 GEOMET 321 PLUS M	SCREW M14X40 UNI5931 12.9 DACR.
59	70050266	3	STELO GUIDA PISTONE	PISTON GUIDE ROD
60	99192500	6	VITE TCEI M06X35 5931 A2-70	SCREW M06X35 5931 A2-70
61	90352800	3	OR D.29X1,5 (290-15)	O-RING D. 29.00x1.50 NBR 70SH
74	71223074	1	STAFFA DI SOLLEVAMENTO	STAFFA DI SOLLEVAMENTO
75	99426600	1	VITE TE M12X25-UNI5739 ZINC.	VITE TE M12X25-UNI5739 ZINC.
76	99180900	1	VITE TCEI M06X10 UNI5931 INOX	SCREW M06X10 5931 A2-70
77	96693950	1	ROSETTA D.6.4X11X0.7 DIN6798 INOX	WASHER 6.4x11.0x0.7 D6798A INOX
KIT2156	34215601	1	KIT 2156	KIT 2156*CONROD BUSHING
KIT2157	34215701	1	KIT 2157	KIT 2157*CONROD BUSHINGS +0,25

Albero maschio con linguetta - GAS - ATEX - Male shaft (key) - GAS - ATEX

Ref.	Codice - Part n°	Qtà - Qty	Descrizione	Description
KIT2158	34215801	1	KIT 2158	KIT 2158*CONROD BUSHINGS +0,50
KIT2246	34224601	1	KIT 2246	KIT 2246 INTAKE/DELIVERY VALVE
KIT2248	34224801	1	KIT 2248	KIT 2248 PACKING D. 32
KIT2253	34225301	1	KIT 2253	KIT 2253 CPL.SEAL D.32