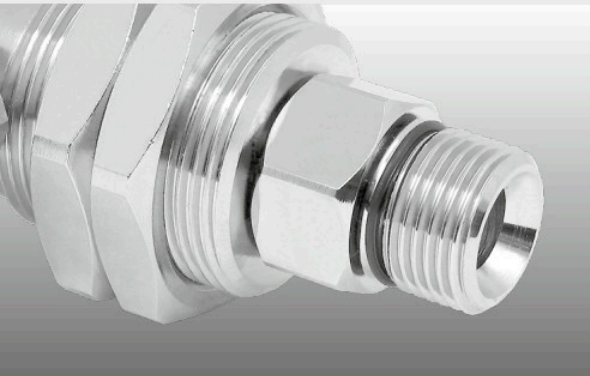


- ✓ High speed, triple bearing system
- ✓ Bulkhead fitting for mounting
- ✓ Corrosion resistant
- ✓ Highest quality and precision
- ✓ Maintenance free

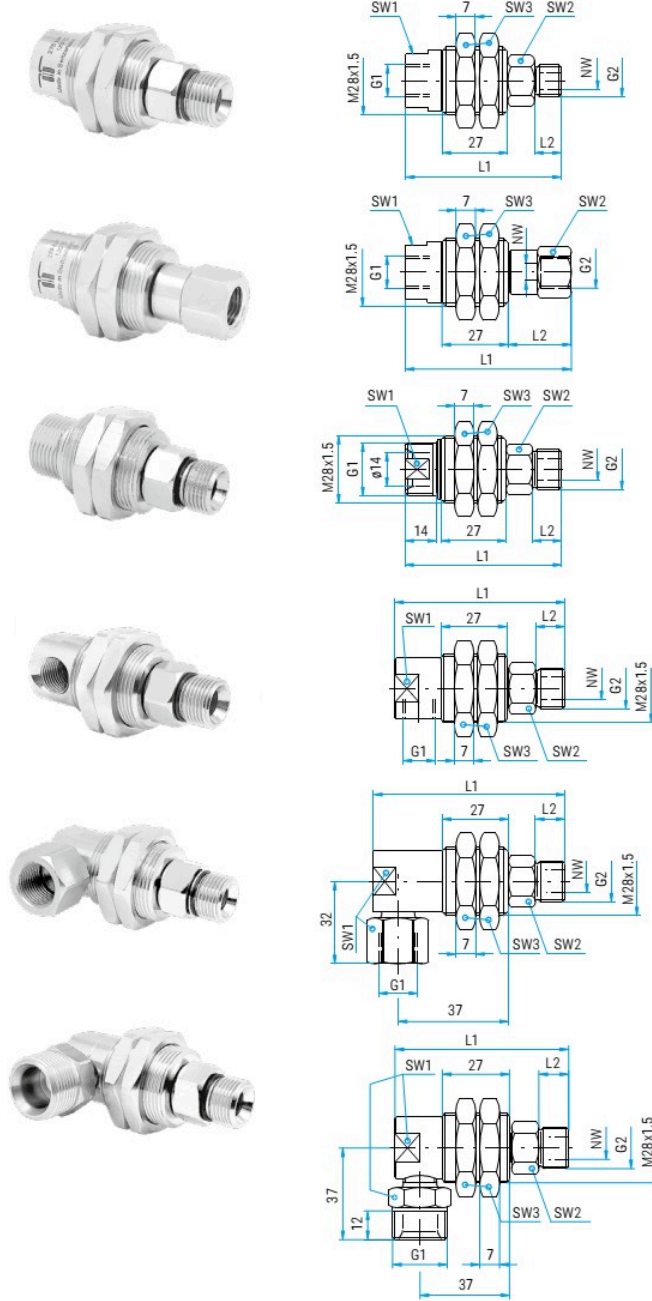
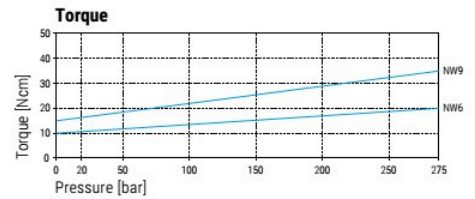
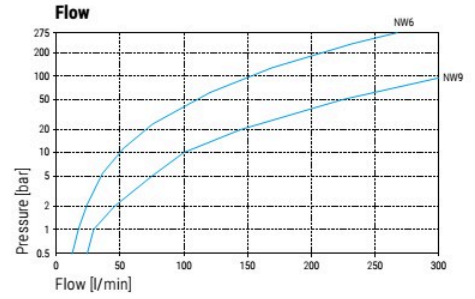


Application

High pressure cleaning technology, parts washers, tire cleaners, self rotating applications

TECHNICAL DATA

Pressure 275 bar (27.5 MPa)
Temperature 30°C (at 1'000 rpm)
 120°C (at 30 rpm)
RPM max. 1'000 rpm
Body DGG: brass, nickel plated
 DGGI: stainless steel
Inner part stainless steel
Seal O-ring NBR
 (optional: EPDM or FKM)
Bearing 2x radial ball bearings
 1x thrust ball bearing
Throughput medium pH 3 - 12
 10 µm filtered
 20 bar compressed air



DGG DGGI

Part No.	Part No.	G1 (F)	G2 (M)	NW	SW1	SW2	SW3	L1	L2	Weight
33.001	33.916	G1/4" F	G1/4" M	6	22	19	34*	65	11	220 g
33.003	33.917	G1/4" F	G3/8" M	6	22	19	34*	66	12	250 g
33.025	---	G1/4" F	1/8" NPTM	6	22	10	34	57	8	200 g
33.101	33.919	G3/8" F	G1/4" M	6	22	19	34*	65	11	230 g
33.103	33.904	G3/8" F	G3/8" M	6	22	19	34*	66	12	240 g
33.125	---	G3/8" F	1/8" NPTM	6	22	10	34	57	8	190 g
33.603	33.922	G3/8" F	G3/8" M	9	22	19	34*	67	12	230 g

* at DGGI: 36mm

Part No.	G1 (F)	G2 (F)	NW	SW1	SW2	SW3	L1	L2	Weight
33.002	G1/4" F	G1/4" F	6	22	19	34	68	26	230 g
33.004	G1/4" F	G3/8" F	6	22	22	34	69	27	230 g
33.102	G3/8" F	G1/4" F	6	22	19	34	68	26	230 g
33.104	G3/8" F	G3/8" F	6	22	22	34	69	27	260 g

Part No.	G1 (QV)	G2 (M)	NW	SW1	SW2	SW3	L1	L2	Weight
33.201	M21x1.5 M	G1/4" M	6	19	19	34	65	11	220 g
33.203	M21x1.5 M	G3/8" M	6	19	19	34	66	12	230 g
33.251	M22x1.5 M	G1/4" M	6	20	19	34	65	11	200 g
33.253	M22x1.5 M	G3/8" M	6	20	19	34	66	12	210 g

DGG 90° DGGI 90°

Part No.	Part No.	G1 (F)	G2 (M)	NW	SW1	SW2	SW3	L1	L2	Weight
33.301	33.921	G1/4" F	G1/4" M	6	22	19	34*	70	11	220 g
33.303	33.906	G1/4" F	G3/8" M	6	22	19	34*	71	12	240 g

* at DGGI: 36mm

Part No.	G1 (F)	G2 (M)	NW	SW1	SW2	SW3	L1	L2	Weight
33.401	G3/8" F	G1/4" M	6	22	19	34	70	11	290 g
33.403	G3/8" F	G3/8" M	6	22	19	34	71	12	310 g

Part No.	G1 (QV)	G2 (M)	NW	SW1	SW2	SW3	L1	L2	Weight
33.503	M21x1.5 M	G3/8" M	6	22	19	34	71	12	290 g
33.553	M22x1.5 M	G3/8" M	6	22	19	34	71	12	330 g

33.910	Seal kit NW 6
33.914	Seal kit NW 6 FKM

Legend

M.. = metric thrust, ..M = male, F = female, G = gas pipe thrust, R = gas pipe thrust conical, QV = quick connects
 SV = profile ring fitting, D = diameter, L = length, NW = nominal width, SW = wrench size

Additional Seal Options available

EPDM (E) or FKM/Viton (V). Please indicate letter of seal material after part number.
 Minimum orders apply.