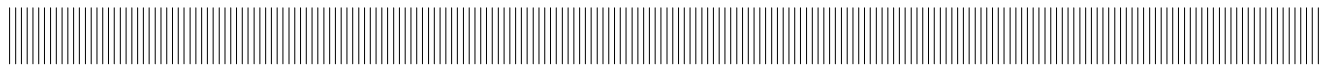
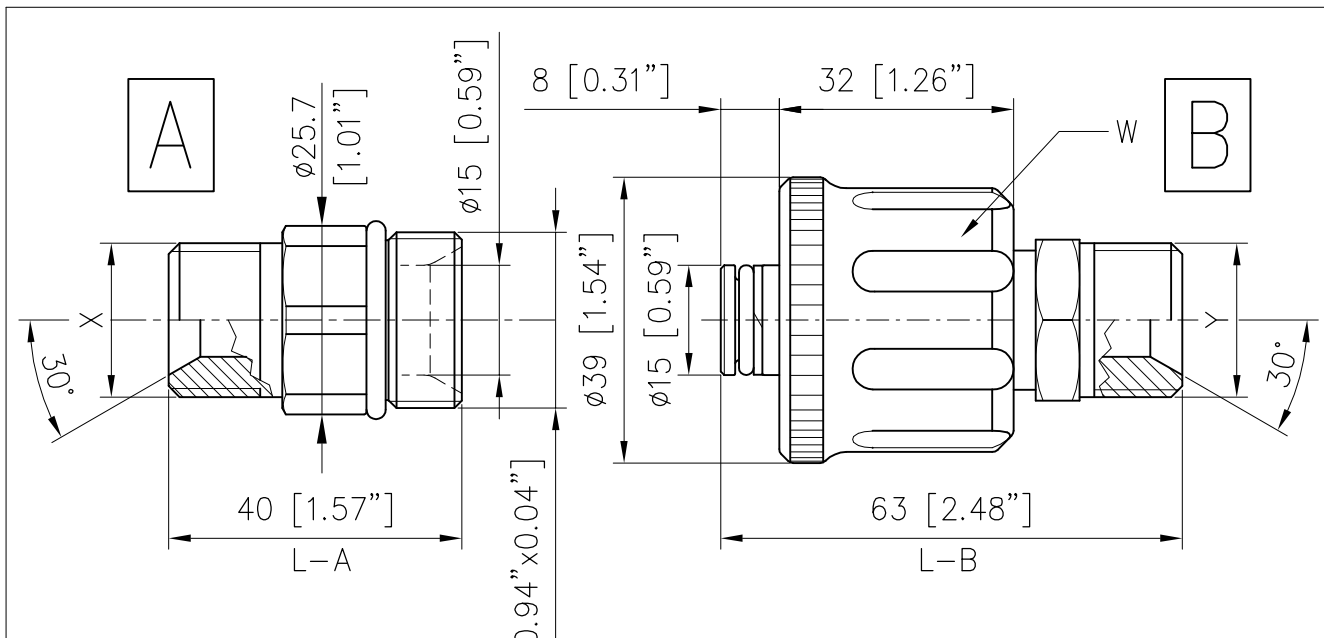
	E QUIPAGGIAMENTI T ECNICI L AVAGGIO	AR9 ATTACCO PROLUNGATO 2 O-RING – M24 – D.15 mm. AR9 EXTENDET QUICK COUPLING 2 O-RING – M24 – D.0.59 in.	(I) (GB)	5
				02/09/08



CARATTERISTICHE TECNICHE SPECIFICATIONS

- PRESSIONE NOMINALE RATED PRESSURE	600 bar – 60 MPa (8700 psi)
- PRESSIONE CONSENTITA PERMISSIBLE PRESSURE	660 bar – 66 MPa (9500 psi)
- PORTATA MASSIMA MAX FLOW RATE	80 l/min (21 USG p.m.)
- TEMPERATURA MASSIMA MAX WORKING TEMPERATURE	160° C (320°F)
- MATERIALE MATERIAL	CORPO E NIPPOLO IN ACCIAIO INOX CON MANOPOLA IN PLASTICA ANTIURTO E GUARNIZIONI OR IN NBR. STAINLESS STEEL BODY AND NIPPLE WITH SHOCKPROOF PLASTIC HANDLE AND NBR O RINGS.

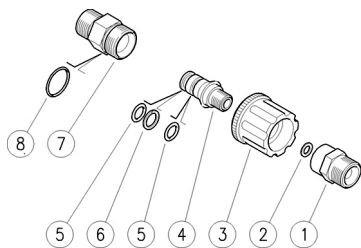
MISURE D'INGOMBRO OVERALL DIMENSIONS



A	X	L-A
CODICE CODE		
26.0940.40	G 3/8 F	40
26.0940.50	G 3/8 M	40
26.0940.70	G 1/2 M	40
26.0940.46	G 3/8 F+74°F	45
26.0940.80	M24x1,5-Ø15	45

B	Y	W	L-B
CODICE CODE			
26.0950.40	G 3/8 F	ROSSO RED	63
26.0950.50	G 3/8 M	ROSSO RED	63
26.0950.70	G 1/2 M	ROSSO RED	63
26.0950.49	G 3/8 F+74°F	NERO BLACK	69
26.0950.59	G 3/8 M	NERO BLACK	63

26.0940.40 AR9 A M24 15mm nippl. in.G3/8F
 26.0940.50 AR9 A M24 15mm nipplo ghi.in.G3/8M
 26.0940.70 AR9 A M24 15mm nip.ghi.in.G1/2M
 26.0950.30 AR9 B M24-3pz 15mm att.rap.gh.,inox-G1/4

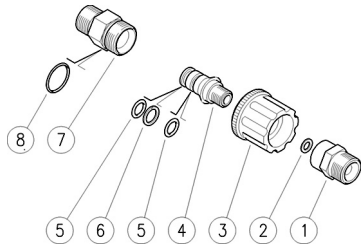


26.0950.40 AR9 B M24,3pz 15mm att.rap.gh.,inox-3/8F
 26.0950.50 AR9 B M24-3pz 15mm att.rap.gh.,inox-G3/8M
 26.0950.70 AR9 B M24,3pz 15mm att.rap.gh.,inox-1/2M

Pos.	Codice	Descrizione	Q.tà	K1	K2	K3	K4	
1	26.0956.51R	Riduz.in.M16x1F -G1/4M (1)	1					2
1	26.0953.51R	Riduz.inox M16x1F Ermeto G1/2M (2)	1					2
1	26.0954.51R	Riduz.inox M16x1F -G3/8F (3)	1					2
1	26.0955.51R	Riduz.in.M16x1F -G3/8M (4)	1					2
2	14.3713.00R	Rosetta 9x13x1,5 mm Cu	1					10
3	26.0951.22R	Girello AR9 M24x1,5-17,5mm rosso	1					3
4	26.0952.51R	Spinotto 15mm-M16x1 inox	1					1
5	10.3110.10R	An.OR 2,4x10,3 mm Ni 85	2					10
6	10.4011.01R	An. anties. 11,2x14,9x1,2 mm	1					10
7	26.0940.40	AR9 A M24 15mm nippl. in.G3/8F (5)	1					10
7	26.0940.50	AR9 A M24 15mm nipplo ghi.in.G3/8M (6)	1					10
7	26.0940.70	AR9 A M24 15mm nip.ghi.in.G1/2M (7)	1					10
8	10.3185.00R	An.OR 2,5x20 mm	1					10

(1) 26.0950.30 (2) 26.0950.70 (3) 26.0950.40 (4) 26.0950.50 (5) 26.0940.40
 (6) 26.0940.50 (7) 26.0940.70

26.0940.40 AR9 A M24 15mm nippl.sst-3/8F Bsp
 26.0940.50 AR9 A M24 15mm scr.nippl.,sst-3/8M Bsp
 26.0940.70 AR9 A M24 15mm scr.nipp.,sst-1/2M Bsp
 26.0950.30 AR9 B M24-3pcs 15mm scr.cpl,sst-1/4M Bsp



26.0950.40 AR9 B M24,3pcs 15mm scr.cpl,sst-3/8F Bsp
 26.0950.50 AR9 B M24-3pcs 15mm scr.cpl,sst-3/8M Bsp
 26.0950.70 AR9 B M24,3pcs 15mm scr.cpl,sst-1/2M Bsp

Pos.	P/N	Description	Q.ty	K1	K2	K3	K4	
1	26.0956.51R	Reduct.sst M16x1F -1/4M Bsp (1)	1					2
1	26.0953.51R	Reduct.sst M16x1F Ermeto 1/2 Bsp M (2)	1					2
1	26.0954.51R	Reduct.sst M16x1F -3/8F Bsp (3)	1					2
1	26.0955.51R	Reduct.sst M16x1F -3/8M Bsp (4)	1					2
2	14.3713.00R	Washer, 9x13x1,5 mm Cu	1					10
3	26.0951.22R	Hand nut -AR9, M24x1,5-17,5mm red	1					3
4	26.0952.51R	Plug, 15mm-M16x1 Sst.	1					1
5	10.3110.10R	O-ring, 2,4x10,3 mm Ni 85	2					10
6	10.4011.01R	Back-up ring, 11,2x14,9x1,2 mm	1					10
7	26.0940.40	AR9 A M24 15mm nippl.sst-3/8F Bsp (5)	1					10
7	26.0940.50	AR9 A M24 15mm scr.nippl.,sst-3/8M Bsp (6)	1					10
7	26.0940.70	AR9 A M24 15mm scr.nipp.,sst-1/2M Bsp (7)	1					10
8	10.3185.00R	O-ring, 2,5x20 mm	1					10

(1) 26.0950.30 (2) 26.0950.70 (3) 26.0950.40 (4) 26.0950.50 (5) 26.0940.40
 (6) 26.0940.50 (7) 26.0940.70