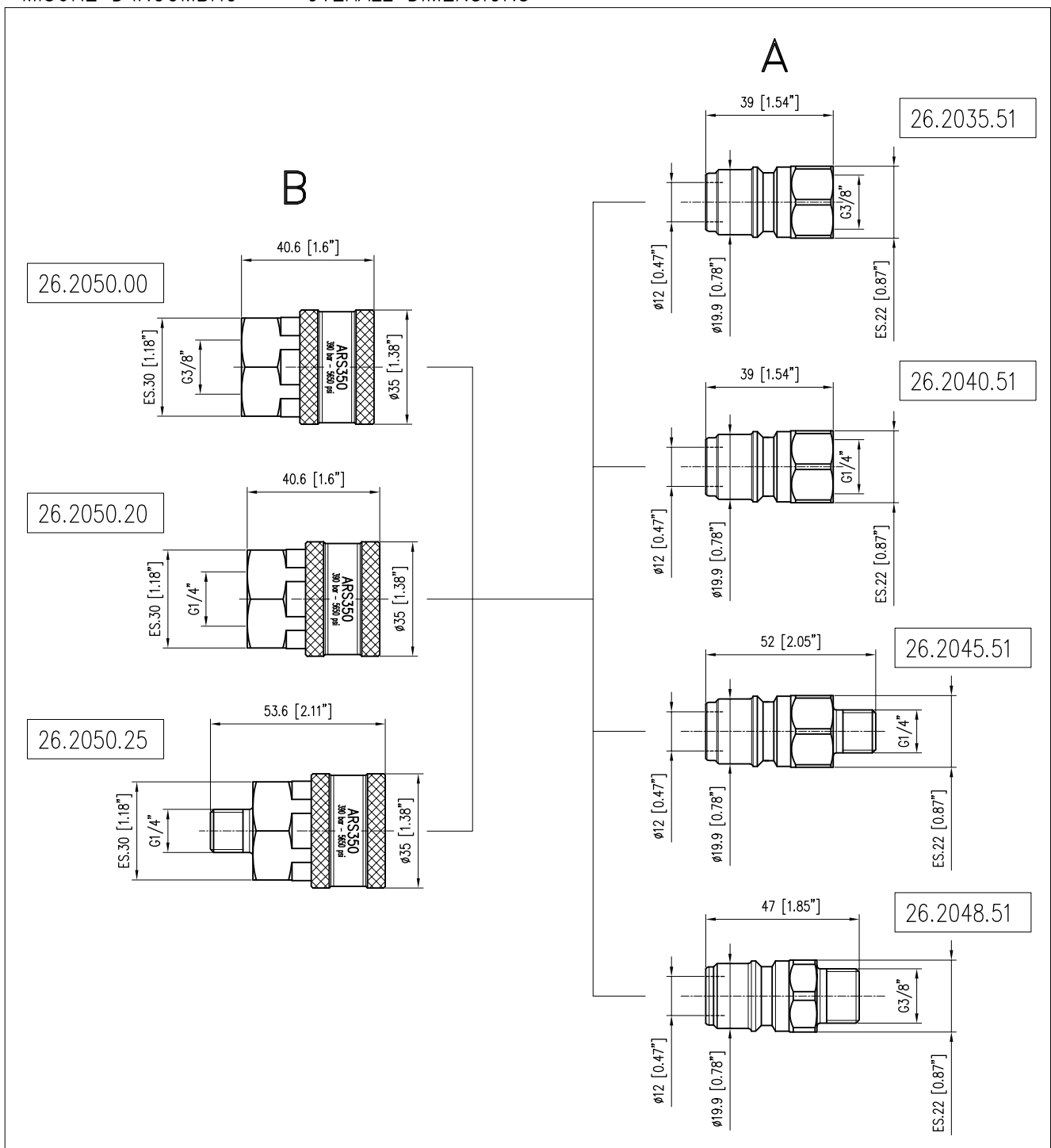


SPECIFICHE TECNICHE - SPECIFICATIONS

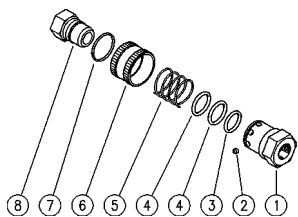
|  |                             |
|--|-----------------------------|
| - PRESSIONE NOMINALE<br>RATED PRESSURE           | 350 bar - 35 MPa (5100 psi) |
| - PRESSIONE CONSENTITA<br>PERMISSIBLE PRESSURE   | 390 bar - 39 MPa (5650 psi) |
| - PORTATA MASSIMA<br>MAX FLOW RATE               | 50 l/min (13.2 USG p.m.)    |
| - TEMPERATURA MASSIMA<br>MAX WORKING TEMPERATURE | 90 °C (195 °F)              |

PERNO IN ACCIAIO INOX TEMPRATO E CORPO IN ACCIAIO INOX CON GUARNIZIONI OR IN VITON .  
PIN IN HARDENED STAINLESS STEEL AND BODY IN STAINLESS STEEL WITH VITON O RINGS .

MISURE D'INGOMBRO - OVERALL DIMENSIONS



26.2035.51R ARS350 A nipplo a sfera, inox G3/8F  
 26.2040.51R ARS350 A nipplo a sfera, inox G1/4F  
 26.2045.51R ARS350 A nipplo a sfera, inox G1/4M

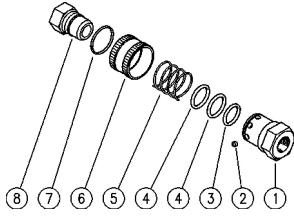


26.2050.00 ARS350 B att.rapido a sfera,inox G3/8F  
 26.2050.20 ARS350 B att.rapido a sfera,inox G1/4 F  
 26.2050.25 ARS350 B att.rapido a sfera,inox G1/4 M

| Pos. | Codice      | Descrizione                         | Q.tà | K1 | K2 | K3 | K4 |  |
|------|-------------|-------------------------------------|------|----|----|----|----|---|
| 1    | 26.2038.51R | Corpo ARS350 G1/4F inox (1)         | 1    |    |    |    |    | 5   |
| 1    | 26.2037.51R | Corpo ARS350 G1/4M inox (2)         | 1    |    |    |    |    | 5   |
| 1    | 26.2031.51R | Corpo ARS350 G3/8F inox (3)         | 1    |    |    |    |    | 5   |
| 2    | 14.7410.10R | Sfera 3/16" inox                    | 8    |    |    |    |    | 10  |
| 3    | 10.3181.95R | An.OR 2,62x17,96 mm Vi 70           | 1    |    |    |    |    | 10  |
| 4    | 10.3195.10R | An.OR 2,5x20 mm Vi 70               | 2    |    |    |    |    | 10  |
| 5    | 26.2033.51R | Molla 1,4x29,1x25 mm inox           | 1    |    |    |    |    | 10  |
| 6    | 26.2032.51R | Ghiera ARS350 inox                  | 1    |    |    |    |    | 5   |
| 7    | 26.2034.51R | An. elast. 1,4x26 mm inox           | 1    |    |    |    |    | 3   |
| 8    | 26.2035.51R | ARS350 A nipplo a sfera, inox G3/8F | 1    |    |    |    |    | 25  |
| 8    | 26.2040.51R | ARS350 A nipplo a sfera, inox G1/4F | 1    |    |    |    |    | 25  |
| 8    | 26.2045.51R | ARS350 A nipplo a sfera, inox G1/4M | 1    |    |    |    |    | 25  |

(1) 26.2050.20 (2) 26.2050.25 (3) 26.2050.00

- 26.2035.51R ARS350 A ball-type nipple,sst,3/8F Bsp
- 26.2040.51R ARS350 A ball-type nipple,sst,1/4F Bsp
- 26.2045.51R ARS350 A ball-type nipple,sst,1/4M Bsp



- 26.2050.00 ARS350 B ball-type coupler,sst,3/8F Bsp
- 26.2050.20 ARS350 B ball-type coupler,sst,1/4 F Bsp
- 26.2050.25 ARS350 B ball-type coupler,sst,1/4 M Bsp

| Pos. | P/N         | Description                            | Q.ty | K1 | K2 | K3 | K4 |    |
|------|-------------|--|------|----|----|----|----|----|
| 1    | 26.2038.51R | Housing -ARS350, 1/4F Bsp Sst. (1)     | 1    |    |    |    |    | 5  |
| 1    | 26.2037.51R | Housing -ARS350, 1/4M Bsp Sst. (2)     | 1    |    |    |    |    | 5  |
| 1    | 26.2031.51R | Housing -ARS350, 3/8F Bsp Sst. (3)     | 1    |    |    |    |    | 5  |
| 2    | 14.7410.10R | Ball, 3/16" Sst.                       | 8    |    |    |    |    | 10 |
| 3    | 10.3181.95R | O-ring, 2,62x17,96 mm Vi 70            | 1    |    |    |    |    | 10 |
| 4    | 10.3195.10R | O-ring, 2,5x20 mm Vi 70                | 2    |    |    |    |    | 10 |
| 5    | 26.2033.51R | Spring, 1,4x29,1x25 mm Sst.            | 1    |    |    |    |    | 10 |
| 6    | 26.2032.51R | Ring nut, ARS350 Sst.                  | 1    |    |    |    |    | 5  |
| 7    | 26.2034.51R | Snap ring, 1,4x26 mm Sst.              | 1    |    |    |    |    | 3  |
| 8    | 26.2035.51R | ARS350 A ball-type nipple,sst,3/8F Bsp | 1    |    |    |    |    | 25 |
| 8    | 26.2040.51R | ARS350 A ball-type nipple,sst,1/4F Bsp | 1    |    |    |    |    | 25 |
| 8    | 26.2045.51R | ARS350 A ball-type nipple,sst,1/4M Bsp | 1    |    |    |    |    | 25 |

(1) 26.2050.20 (2) 26.2050.25 (3) 26.2050.00